

# e-N<sup>+</sup>SA





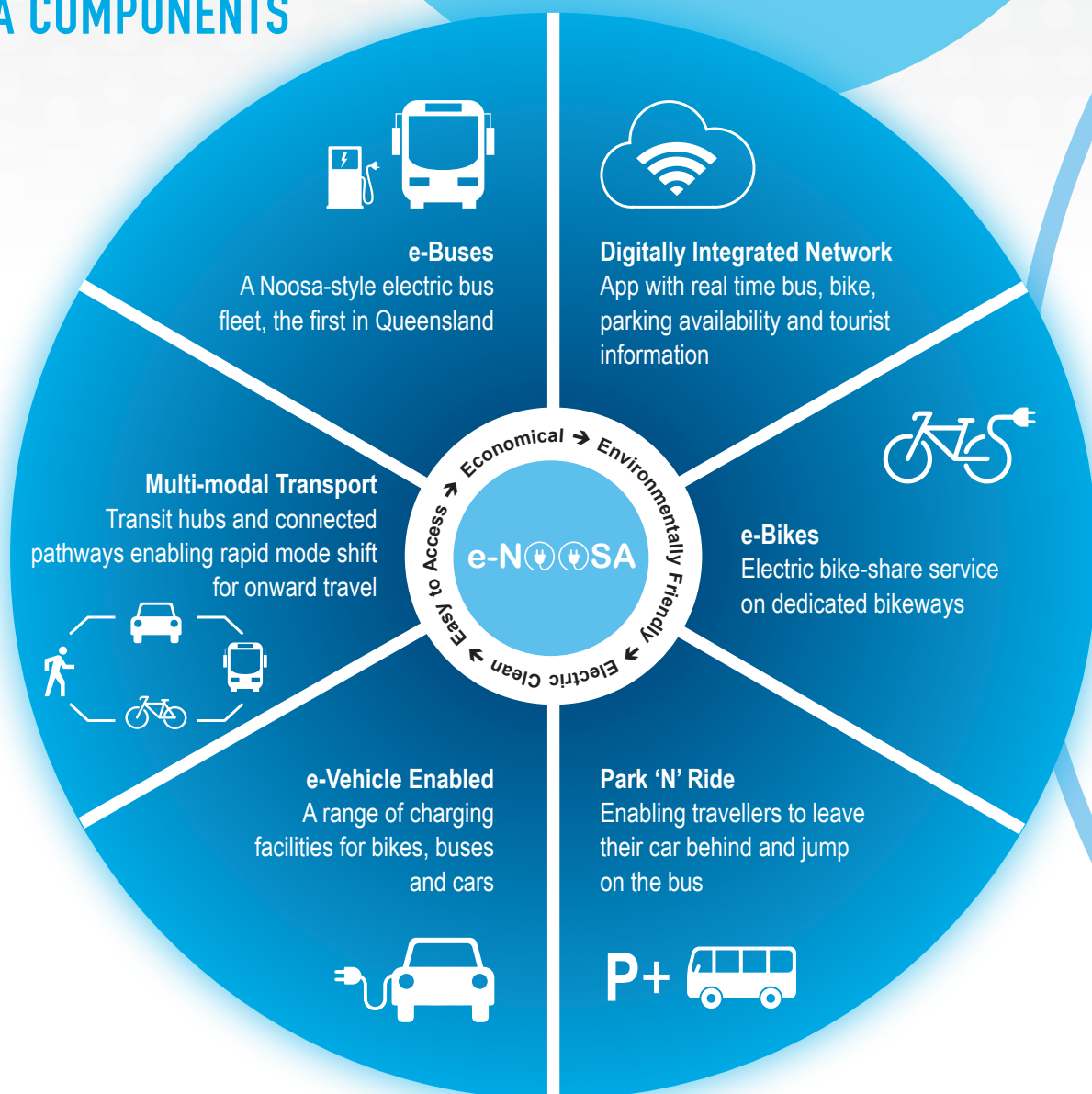
## e-NOOSA PRINCIPLES

Noosa aims to be an exemplar of sustainable tourism with a cutting-edge transport system that successfully manages peak holiday traffic, whilst providing a range of unique travel experiences.

Queensland's first e-bus fleet will serve key destinations and Park 'N' Ride hubs. Passengers will easily plan their journey with real-time information on their phone. An e-bike network will connect travellers to their end destination, capitalising on Noosa's near-perfect climate and flat topography.

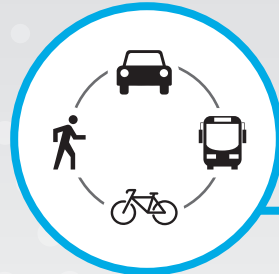
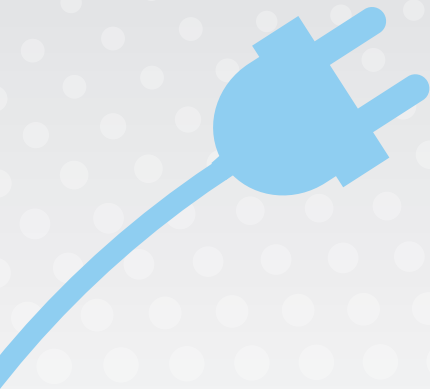
e-Noosa's integrated transport system - the way of the future for regional communities

## e-NOOSA COMPONENTS





## BUILDING e-NOOSA



## INFRASTRUCTURE

- Transit Hubs allowing visitors to swap between walking, cycling, driving and e-buses
- A new pedestrian boulevard connecting Transit Hub with Hastings Street and Main Beach
- Duplication of Garth Prowd Bridge near Hastings Street to improve bus and bike access
- Park 'N' Ride facilities to help travellers leave the car behind
- Transit lanes on Noosa Parade

## e-BUSES



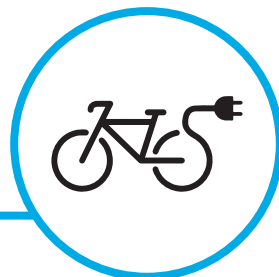
- Develop the first all-electric bus fleet in Australia, in partnership with Translink and local operators
- e-Buses to be built in Queensland with unique Noosa branding
- e-Bus charging stations and depot



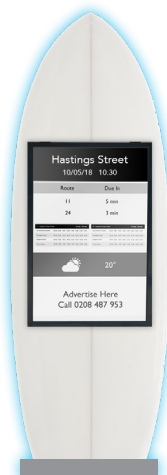
## DIGITAL TECHNOLOGY

- Noosa Travel App providing easy real-time transport planning
- Smart-parking technology providing immediate parking availability
- Charging stations for e-vehicles

## e-BIKES



- e-Bike system to interface with public transport services
- Bikeway infrastructure and charging stations



Hastings Street	
Route	Due In
11	5 min
24	7 min
Advertise Here Call 0208 487 953	

# e-NOOSA -- CONCEPT DRAWING

-  e-Bike Charge Station
-  Transit Hub
-  Park 'N' Ride
-  e-Bike Charge Station
-  Transit Hub
-  Park 'N' Ride
-  e-Bike Charge Station
-  Transit Hub
-  Park 'N' Ride

