



# NOOSA TRANSPORT STRATEGY

Traffic, Pedestrian and Parking  
Survey Data Collection Summary

# Surveys and Data Collection



Surveys undertaken from 6:30am until 8:00pm on

- Wednesday 3<sup>rd</sup> January
- Saturday 17<sup>th</sup> February
- Wednesday 21<sup>st</sup> February

Type of Data collected

- Intersection Surveys
- Pedestrian Surveys
- Parking occupancy and duration of stay surveys
- Face to face interview surveys

# Survey Days



Wednesday  
3<sup>rd</sup> January 2018



Holiday Peak

Weather Conditions



- Xmas Holiday Peak
- Good weather

Saturday  
17<sup>th</sup> February 2018

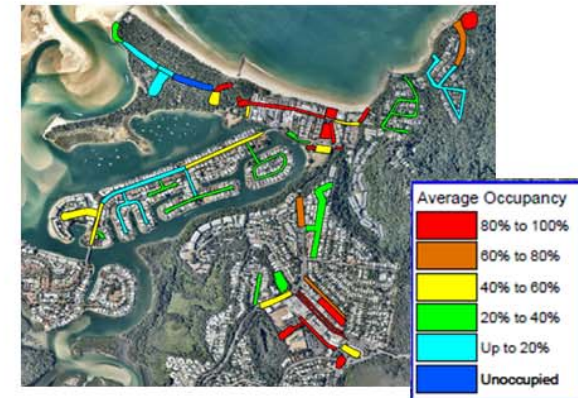


Weekend Peak



- Busy weekend w some small events
- Great surf conditions
- Good weather

Wednesday 21<sup>st</sup>  
February 2018

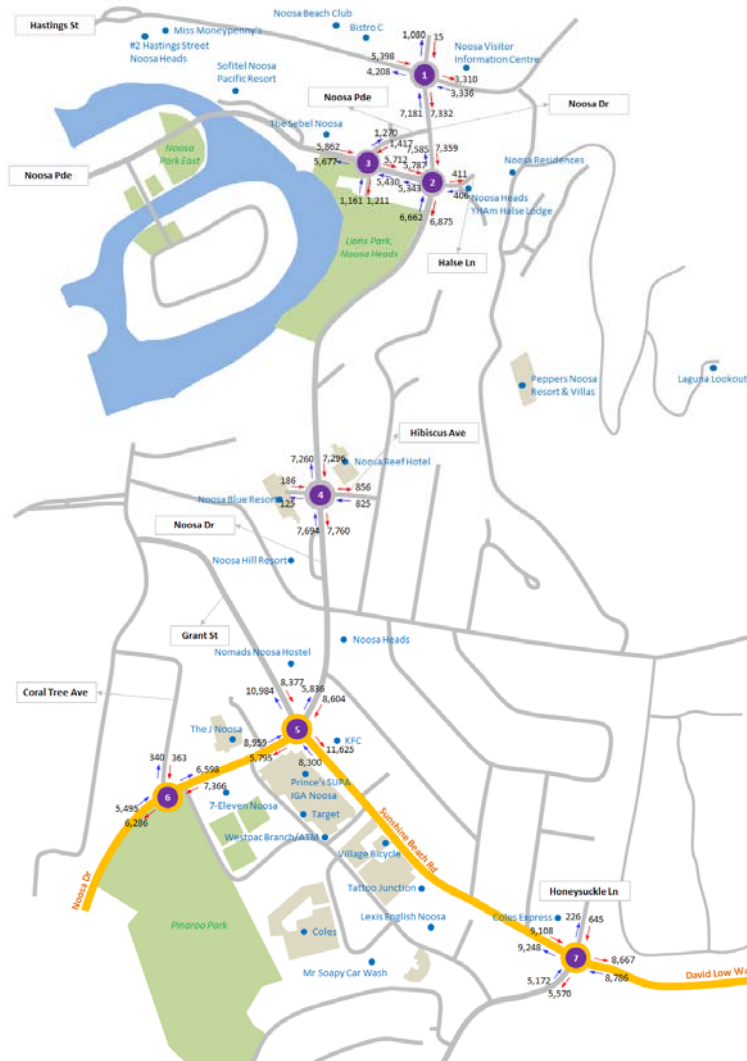


Off Peak



- Off peak – not school holidays
- Heavy rain but great surf conditions

# Locations of traffic counts



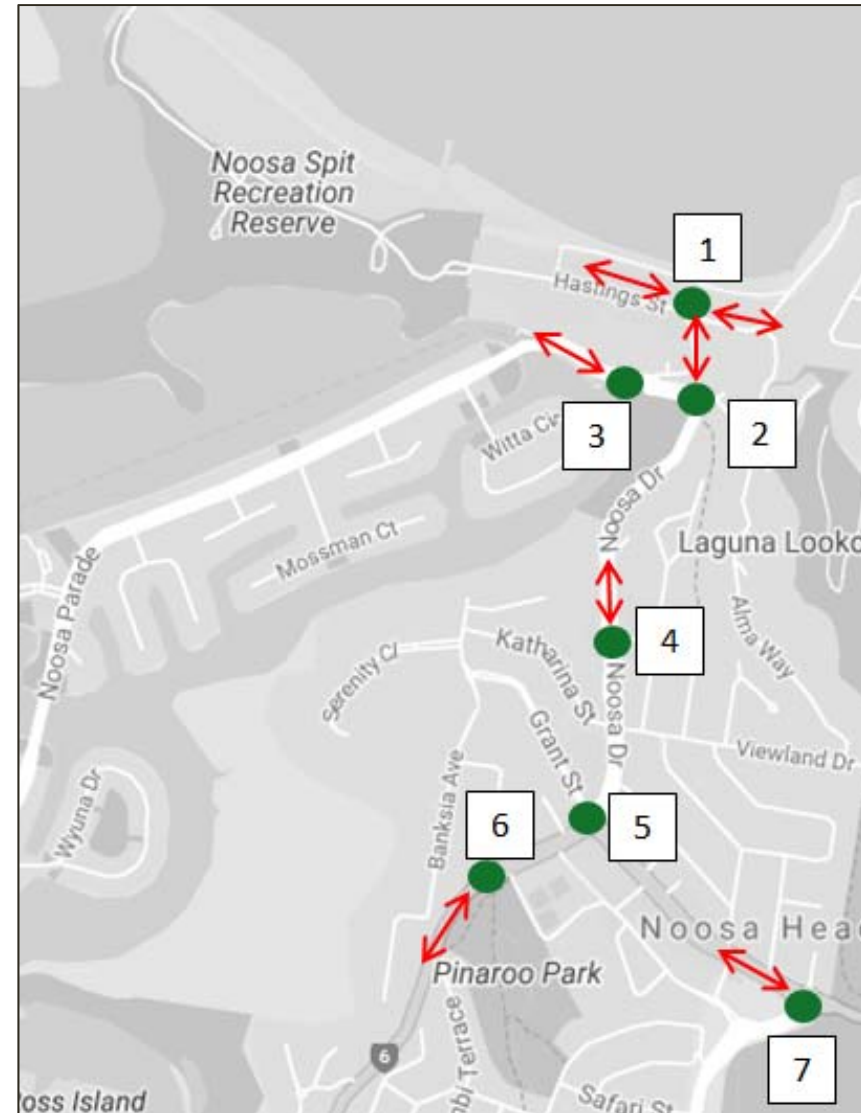
1. Noosa Dr with Hastings St
2. Noosa Dr with Noosa Pde and Halse Lane
3. Noosa Pde with Car Park Access
4. Noosa Dr with Hibiscus Ave and Car Park Access
5. Noosa Dr with Sunshine Beach Rd and Grant St
6. Noosa Dr with Coral Tree Ave
7. Sunshine Beach Rd with David Low Way and Honeysuckle Lane

# Total Traffic Flows



**Total Traffic Flows (vehicles)  
6:30am until 8:00pm**

| Intersection No. | 3 <sup>rd</sup> January | 17 <sup>th</sup> February | 21 <sup>st</sup> February |
|------------------|-------------------------|---------------------------|---------------------------|
| 1 west           | 9,606                   | 9,925                     | 5,768                     |
| 1 east           | 6,646                   | 8,690                     | 5,234                     |
| 2 north          | 14,513                  | 15,985                    | 9,566                     |
| 3 west           | 11,539                  | 11,422                    | 7,730                     |
| 4 north          | 14,556                  | 15,732                    | 9,169                     |
| 6 south          | 11,781                  | 10,235                    | 7,347                     |
| 7 west           | 18,356                  | 17,395                    | 13,290                    |



# Pedestrian Movements



# Overall Summary of Parking Availability



| Location                    | Spaces |
|-----------------------------|--------|
| Noosa Woods                 | 403    |
| Hastings St + Noosa Parade  | 389    |
| National Park               | 266    |
| Noosa Parade Residential Is | 634    |
| Noosa Dr + Edgar Bennet Av  | 144    |
| Noosa Junction              | 833    |
| Total                       | 2669   |



# Parking Occupancy and Duration of Stay



Table 1 - Peak Occupancy

| Survey Date                         | Noosa Heads |         |            | Noosa Junction |         |            |
|-------------------------------------|-------------|---------|------------|----------------|---------|------------|
|                                     | Peak        | Time    | 792 Spaces | Peak           | Time    | 977 Spaces |
| Wednesday 3 <sup>rd</sup> January   | 99%         | 10:30am | 784        | 76%            | 2:00pm  | 741        |
| Saturday 17 <sup>th</sup> February  | 94%         | 10:00am | 748        | 64%            | 2:00pm  | 627        |
| Wednesday 21 <sup>st</sup> February | 52%         | 12 noon | 410        | 68%            | 12 noon | 669        |

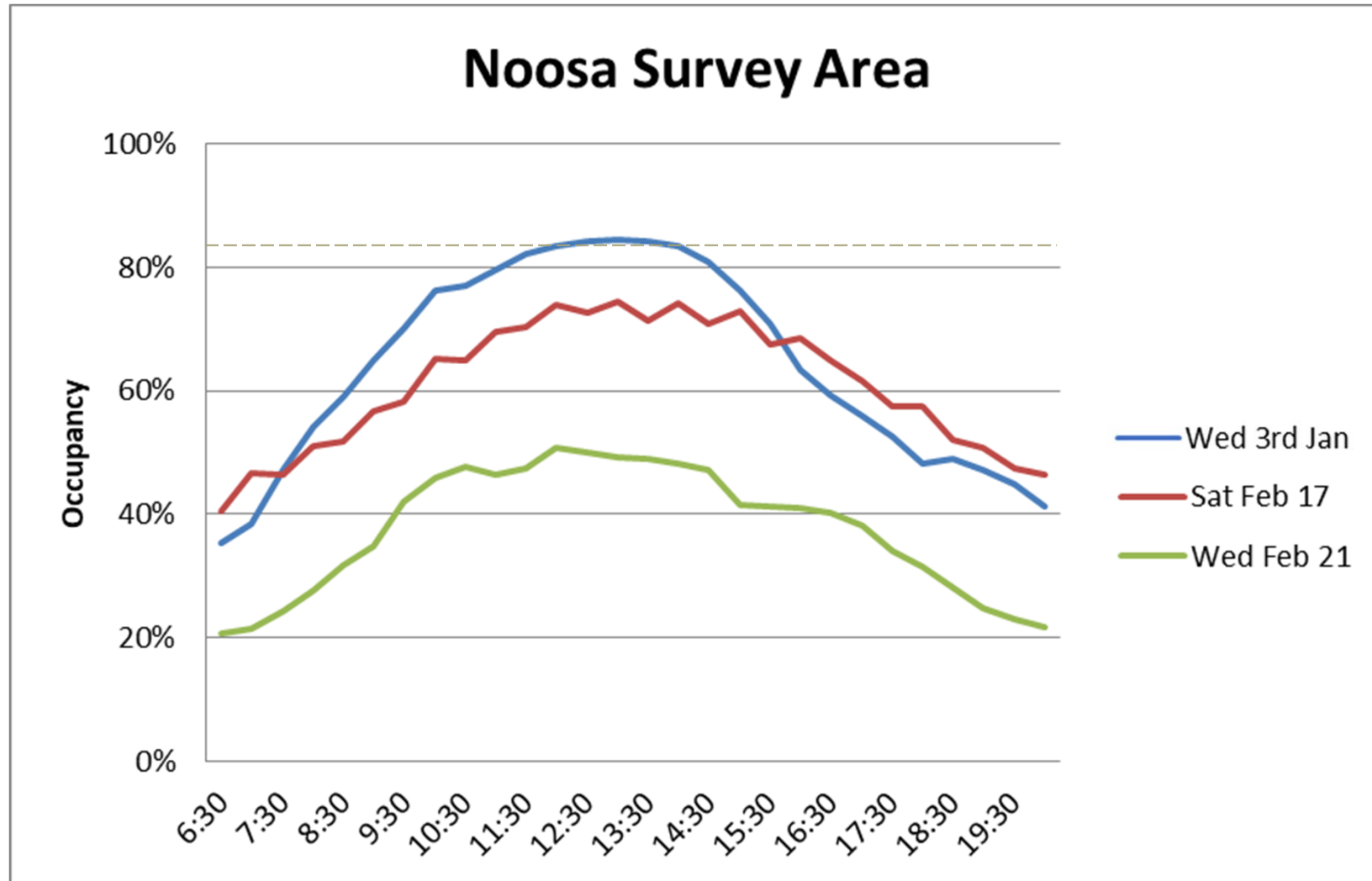
Table 2 – Duration of Stay

| Noosa Heads Parking Areas | Survey Day                  |                               |                               |
|---------------------------|-----------------------------|-------------------------------|-------------------------------|
|                           | Wed 3 <sup>rd</sup> January | Sat 17 <sup>th</sup> February | Wed 21 <sup>st</sup> February |
| Average Occupancy         | 83%                         | 83%                           | 41%                           |
| Average Duration of Stay  | 1:53                        | 1:44                          | 1:35                          |



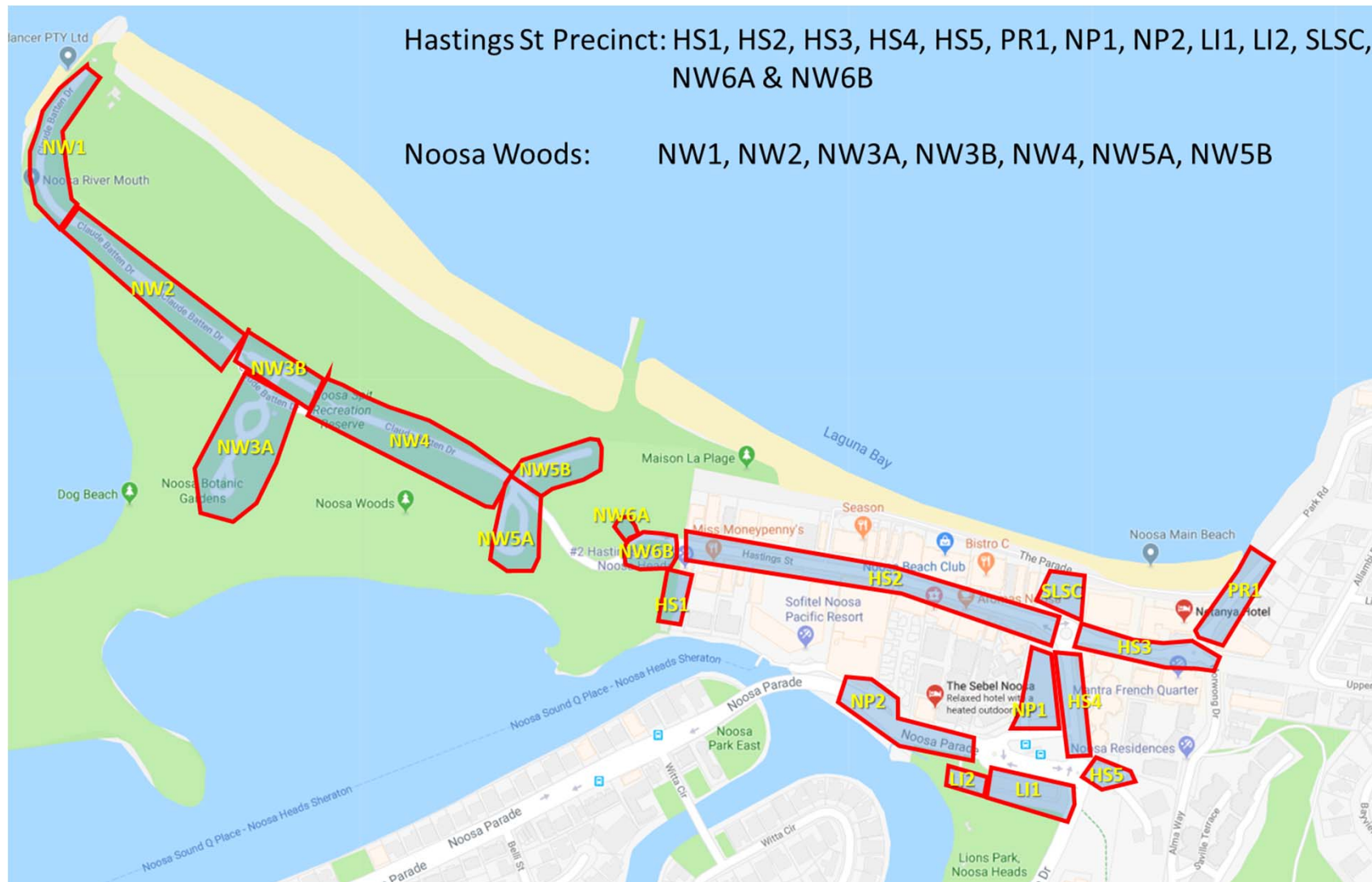
# All Survey Areas – 2,669 parking spaces

Junction, Hastings St, Woods, Residential Area and National Park



# Noosa Heads Precinct - Survey Areas

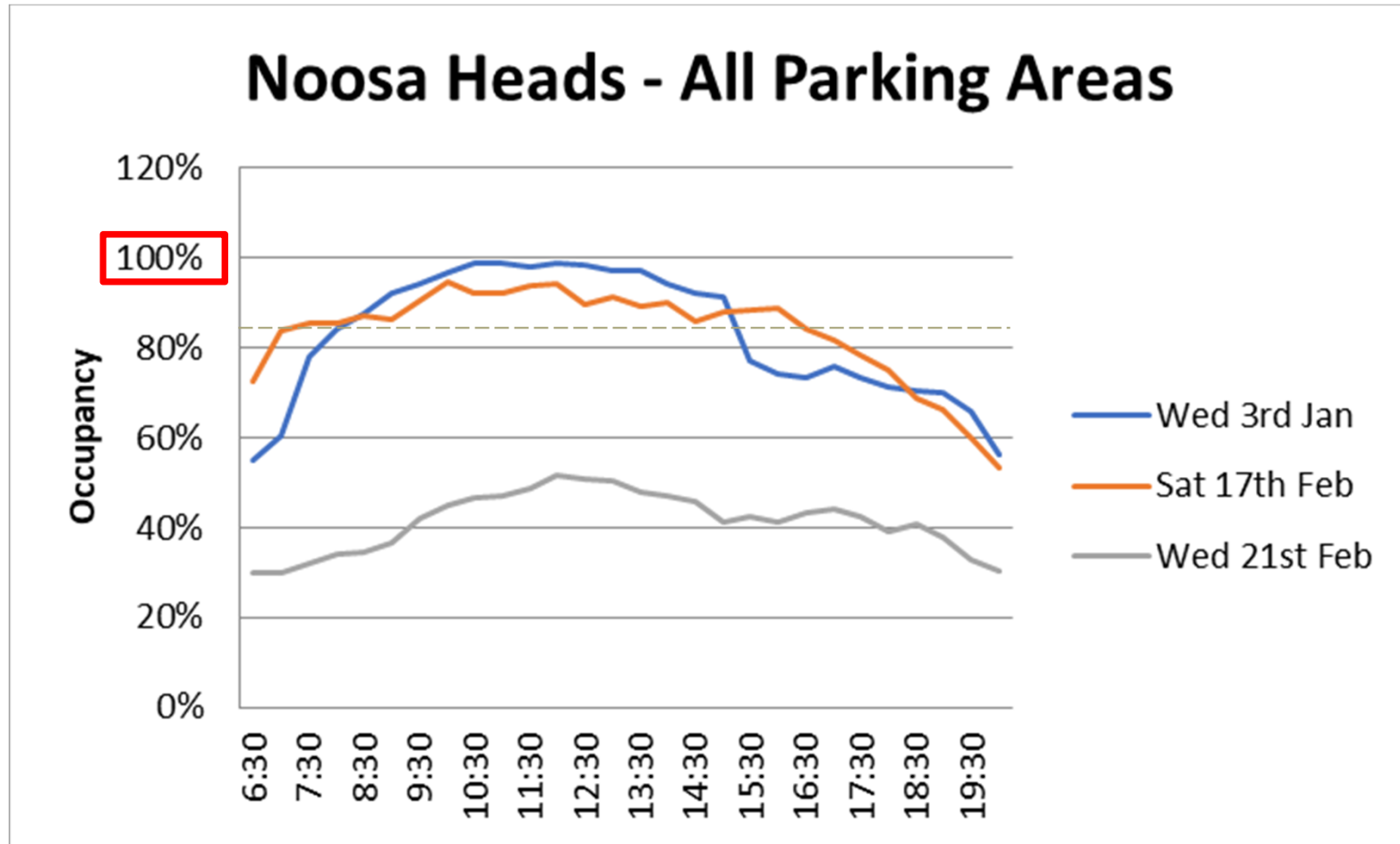
## Duration of Stay (DoS)



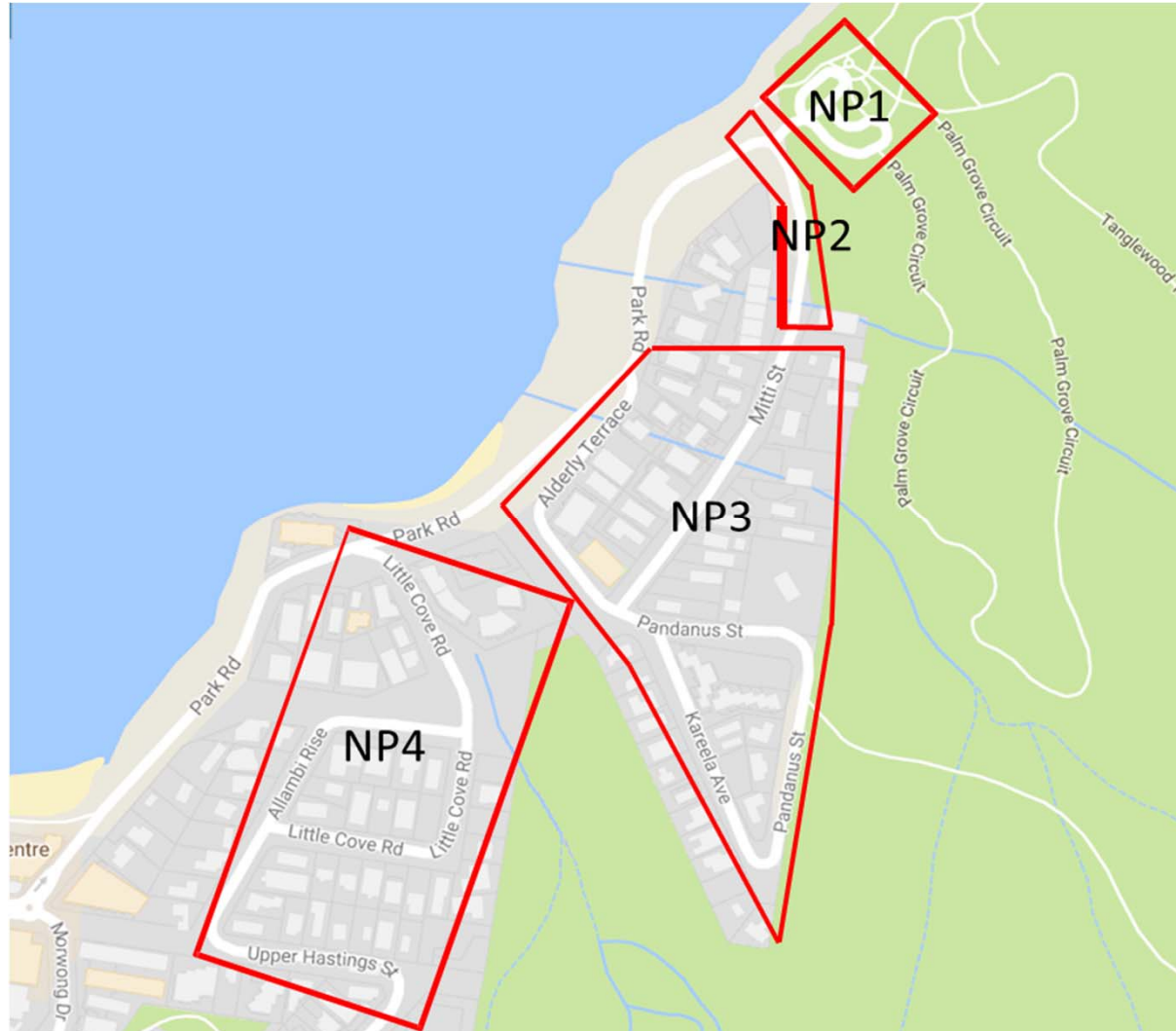
# Noosa Heads Precinct - Parking Occupancy



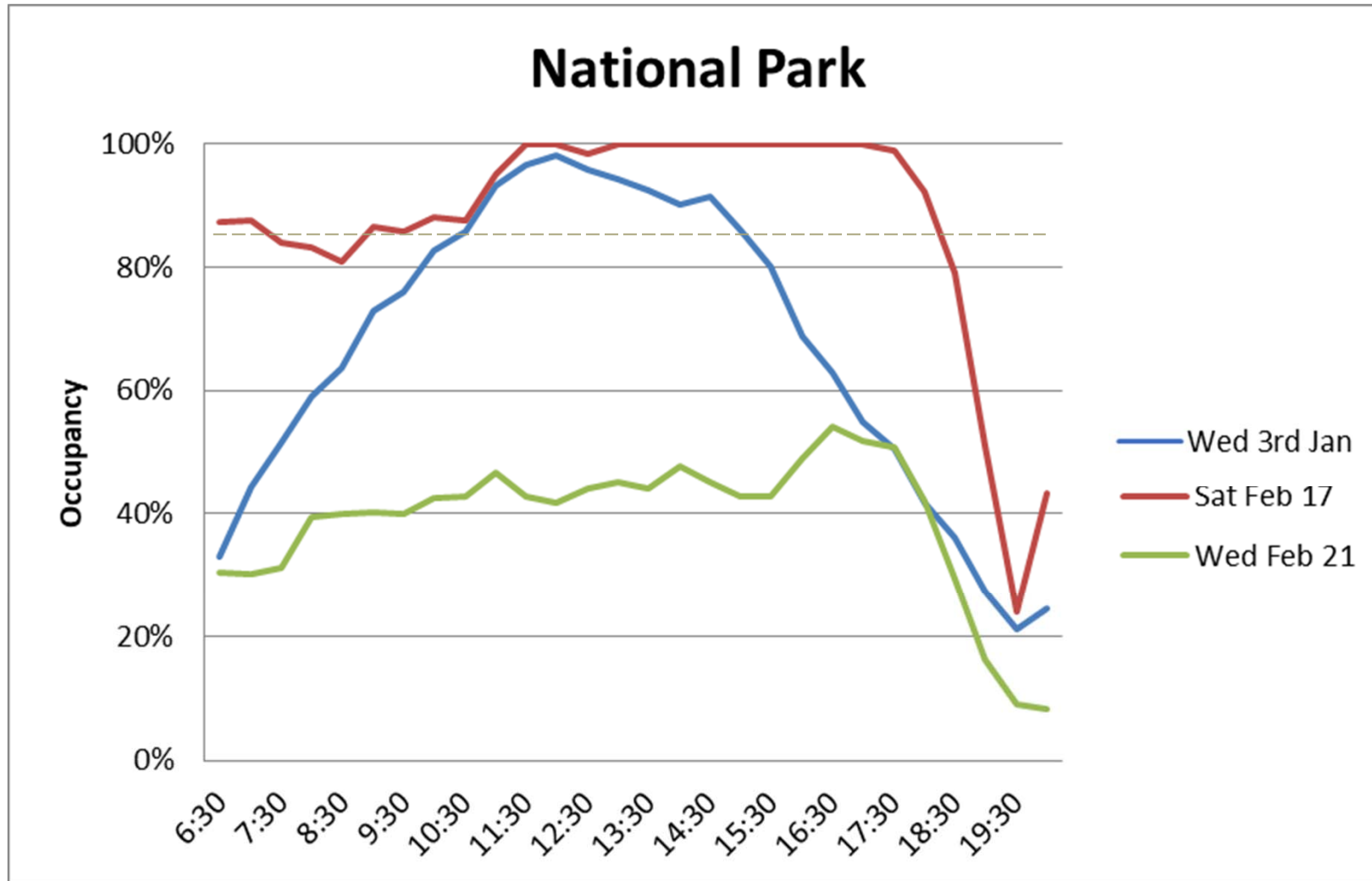
*Greater than 85% Occupancy across all parking areas in Noosa Heads achieved generally between 9am – 3:30pm in peak periods*



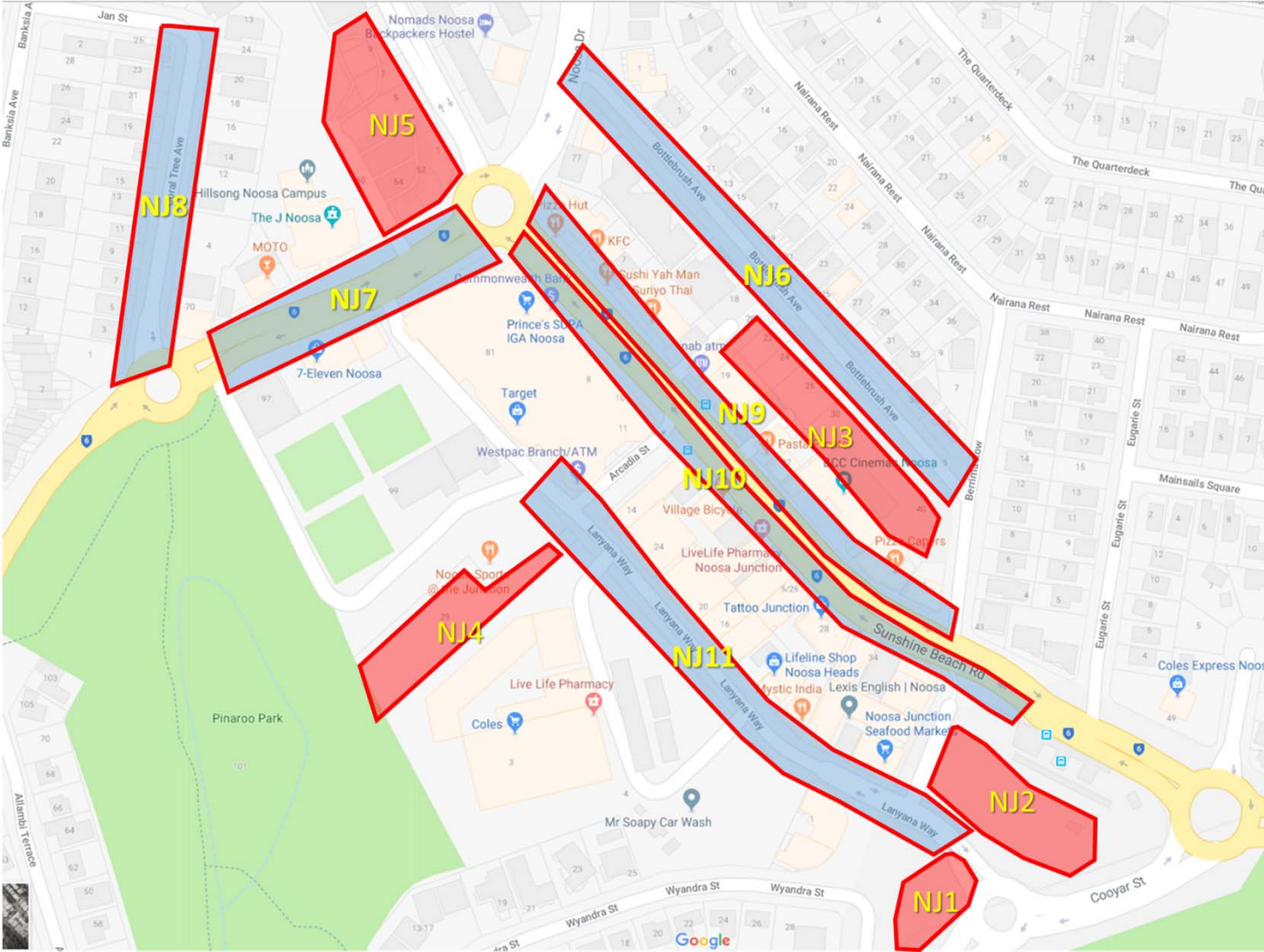
# Noosa National Park Survey Areas



# Noosa National Park Occupancy



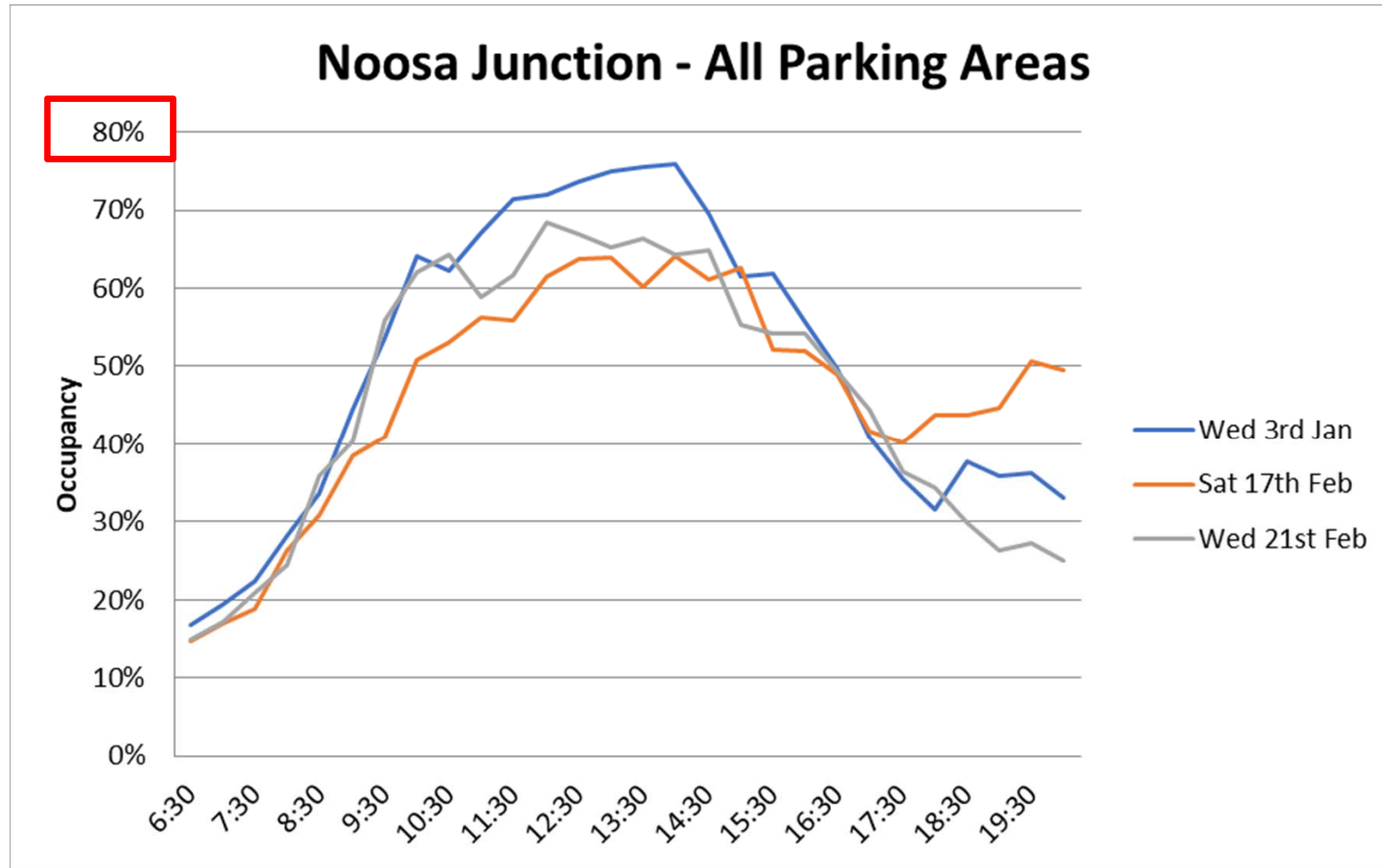
# Noosa Junction Survey Areas



# Noosa Junction Parking Occupancy



*Lower peak occupancies recorded in Noosa Junction*



# Average Occupancy – Wed 3<sup>rd</sup> January



Noosa Parking Survey - 3 January 2018  
Noosa Heads Precinct  
Occupancy by Zone at 12:00



# Average Occupancy – Wed 3<sup>rd</sup> January



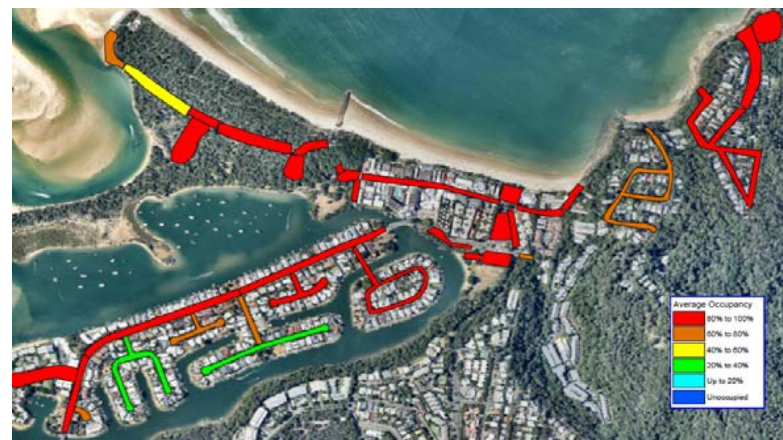
8:00am



1:00pm



3:00pm



6:00pm



# Average Occupancy – Sat 17<sup>th</sup> February

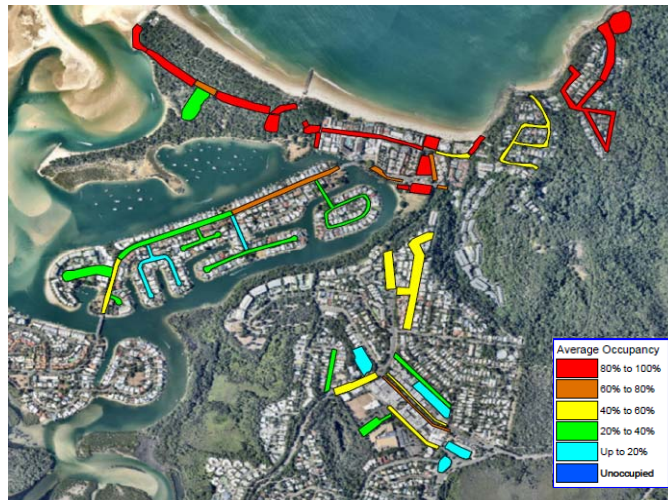


Noosa Parking Survey - 17 February 2018  
Occupancy by Zone at 12:00

# Average Occupancy – Sat 17<sup>th</sup> February



8:00am



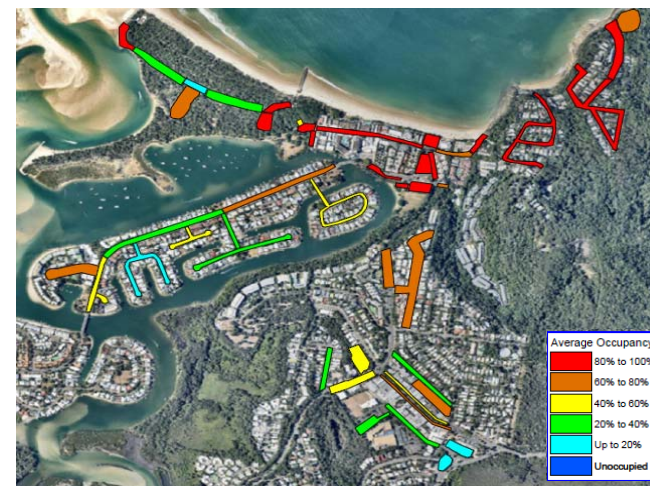
1:00pm



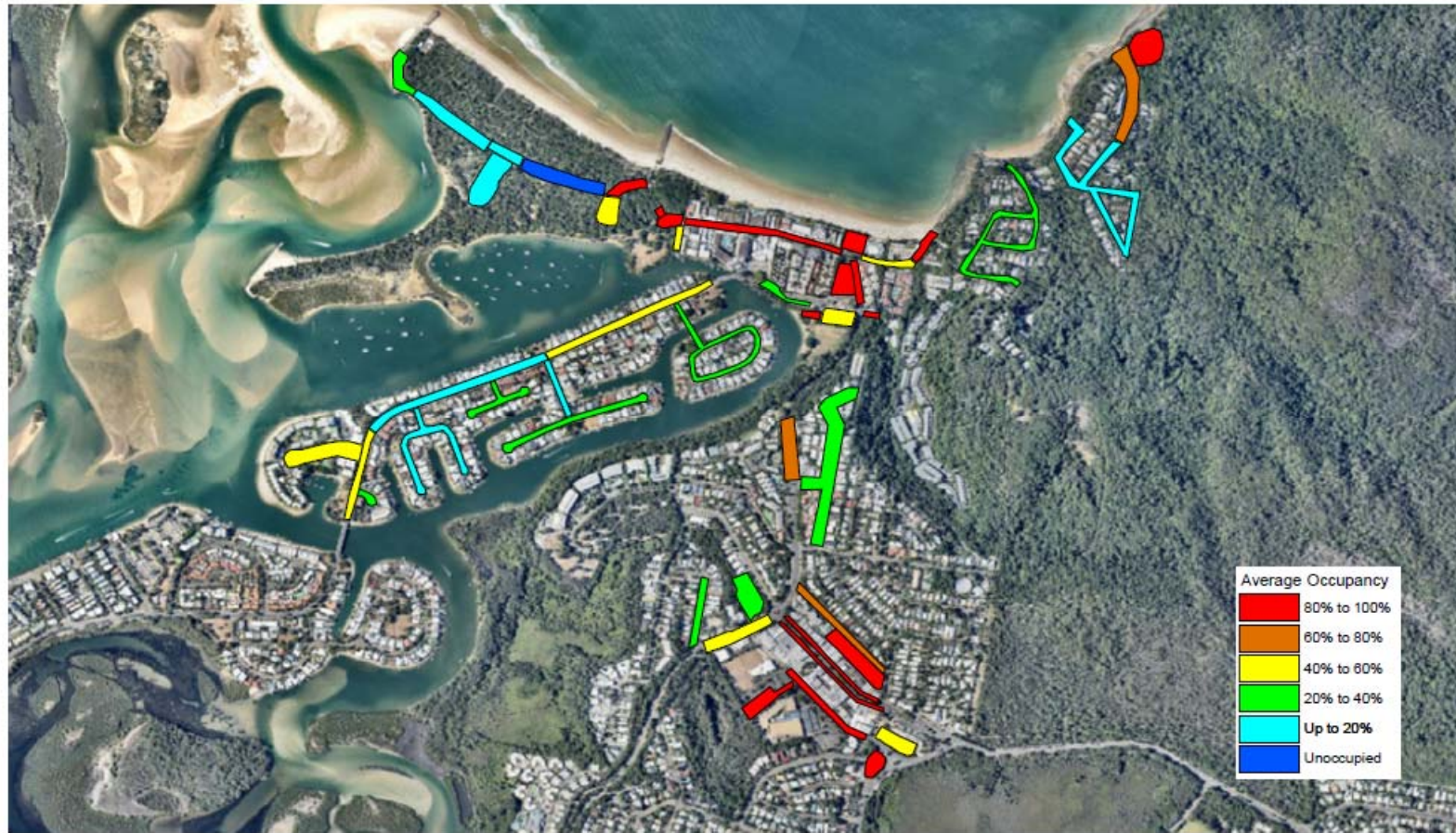
3:00pm



6:00pm



# Average Occupancy – Wed 21<sup>st</sup> February

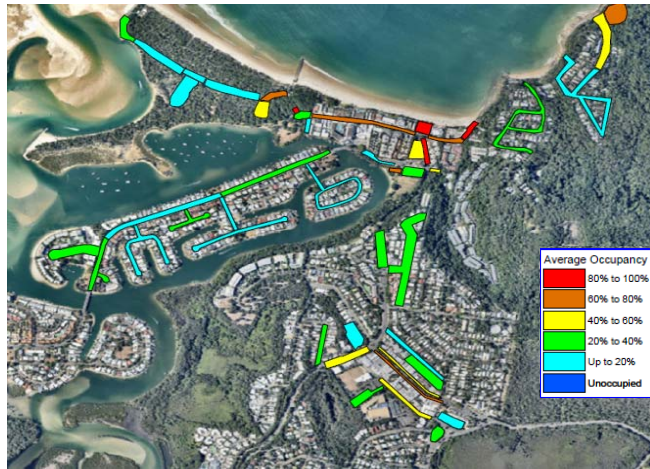


Noosa Parking Survey - 21 February 2018  
Occupancy by Zone at 12:00

# Average Occupancy – Wed 21<sup>st</sup> February



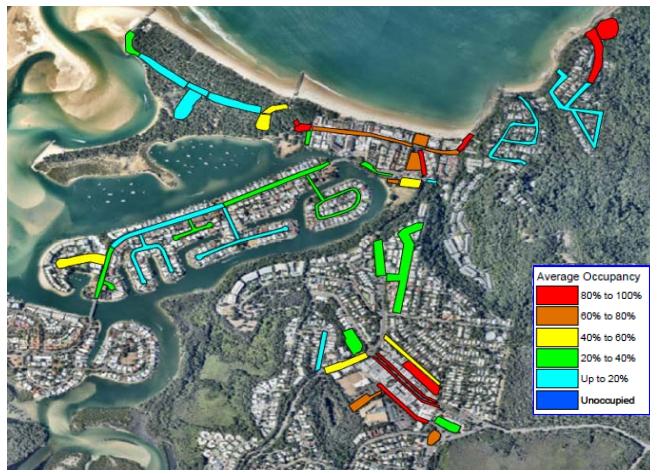
8:00am



1:00pm



3:00pm



6:00pm



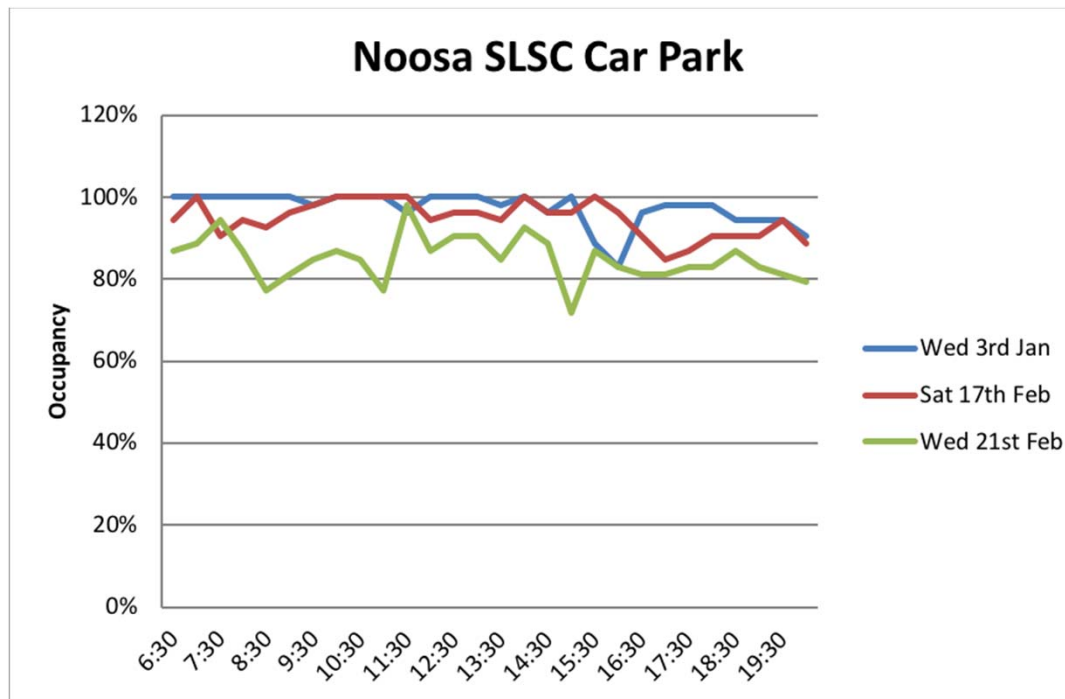
# Noosa Surf Club



**Existing Time Restriction 3 hours between 8am and 5pm**

**Total 54 Spaces**

2



| Duration of Stay | % of Total Spaces |            |            |
|------------------|-------------------|------------|------------|
|                  | Wed Jan 3         | Sat Feb 17 | Wed Feb 21 |
| 0 - 0.5          | 22%               | 28%        | 35%        |
| 0.5 - 1.0        | 16%               | 20%        | 21%        |
| 1.0 - 1.5        | 18%               | 17%        | 15%        |
| 1.5 - 2.0        | 14%               | 11%        | 13%        |
| 2.0 - 2.5        | 12%               | 7%         | 9%         |
| 2.5 - 3.0        | 8%                | 5%         | 3%         |
| 3.0 - 3.5        | 5%                | 3%         | 2%         |
| 3.5 - 4.0        | 1%                | 2%         | 1%         |
| 4.0 - 4.5        | 4%                | 1%         | 1%         |
| 4.5 +            | 0%                | 6%         | 0%         |

Less than 2hrs – 70%

76%

84%

Average DoS 1:46

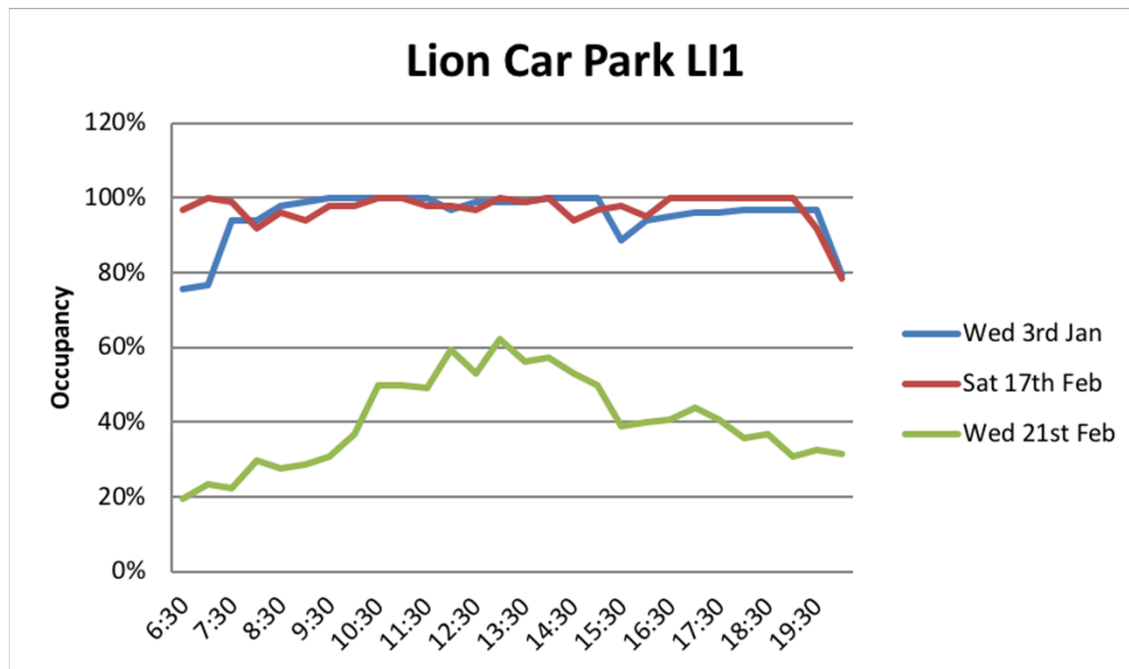
1:47

1:23

# Lions Car Park



**Existing Time Restriction 4 hours between 8am and 5pm**  
**Total 98 Spaces**



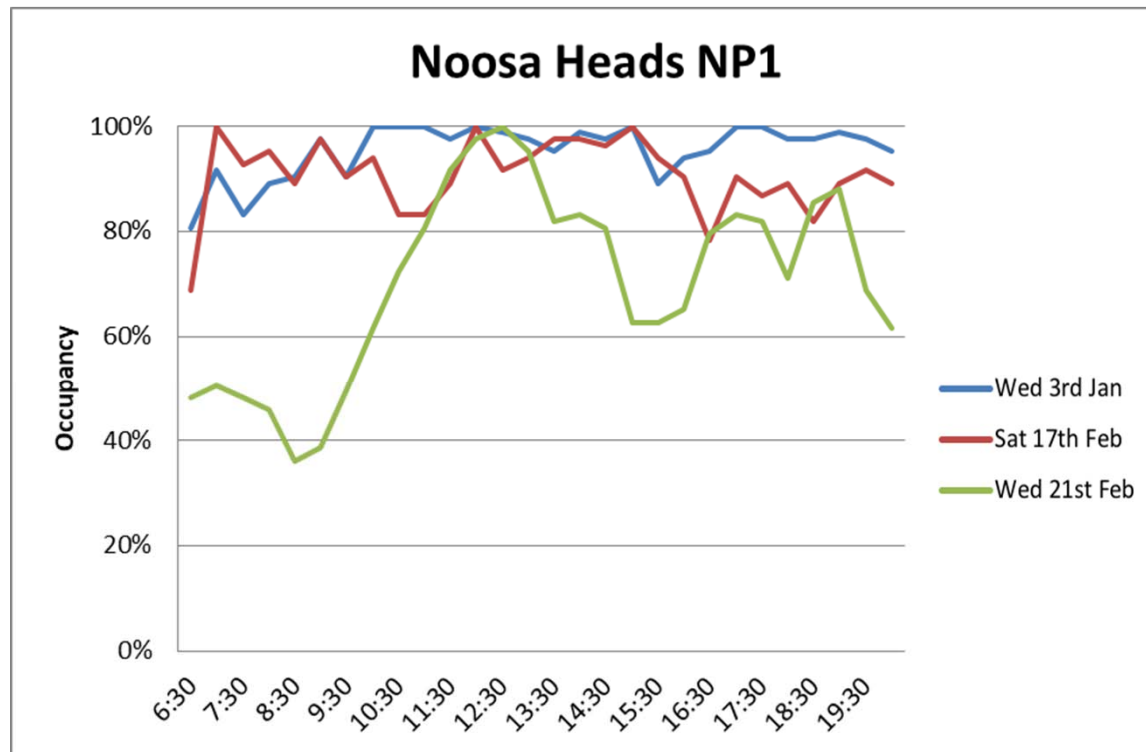
| Lion Car Park LI1 |                   |           |            |
|-------------------|-------------------|-----------|------------|
| Duration of Stay  | % of Total Spaces |           |            |
|                   | Hours             | Wed Jan 3 | Sat Feb 17 |
| 0 - 0.5           | 13%               | 22%       | 18%        |
| 0.5 - 1.0         | 13%               | 9%        | 7%         |
| 1.0 - 1.5         | 16%               | 19%       | 12%        |
| 1.5 - 2.0         | 12%               | 13%       | 15%        |
| 2.0 - 2.5         | 10%               | 10%       | 6%         |
| 2.5 - 3.0         | 8%                | 7%        | 7%         |
| 3.0 - 3.5         | 10%               | 6%        | 7%         |
| 3.5 - 4.0         | 7%                | 5%        | 5%         |
| 4.0 - 4.5         | 4%                | 3%        | 4%         |
| 4.5 - 5.0         | 2%                | 2%        | 2%         |
| 5.0 +             | 5%                | 4%        | 17%        |

Less than 2hrs – 54%      63%      53%  
 Average DoS      2:24      2:09      3:02

# Maze Car Park



**Existing Time Restriction 3 hours between 8am and 5pm**  
**Total 83 Spaces**



| Maze Car Park NP1 |                   |           |            |
|-------------------|-------------------|-----------|------------|
| Duration of Stay  | % of Total Spaces |           |            |
|                   | Hours             | Wed Jan 3 | Sat Feb 17 |
| 0 - 0.5           | 33%               | 29%       | 36%        |
| 0.5 - 1.0         | 13%               | 27%       | 19%        |
| 1.0 - 1.5         | 15%               | 18%       | 15%        |
| 1.5 - 2.0         | 11%               | 8%        | 9%         |
| 2.0 - 2.5         | 8%                | 6%        | 6%         |
| 2.5 - 3.0         | 8%                | 4%        | 5%         |
| 3.0 - 3.5         | 4%                | 2%        | 3%         |
| 3.5 - 4.0         | 3%                | 3%        | 2%         |
| 4.0 - 4.5         | 1%                | 1%        | 1%         |
| 4.5 +             | 2%                | 2%        | 4%         |

Less than 2hrs – 72%      82%      79%  
 Average DoS      1:39      1:29      1:32



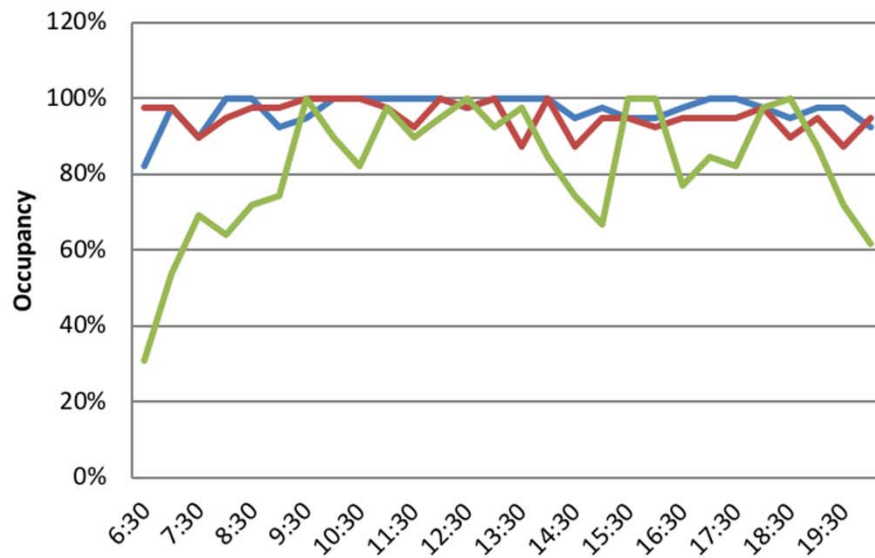
# Hastings Street



**Existing Time Restriction 2 hours between 8am and 5pm**

**Total 39 Spaces**

**Hastings Street HS2**



— Wed 3rd Jan  
— Sat 17th Feb  
— Wed 21st Feb

| Hastings Street (HS2) |                   |            |           |
|-----------------------|-------------------|------------|-----------|
| Duration of Stay      | % of Total Spaces |            |           |
|                       | Wed Jan 3         | Sat Feb 17 | Wed Feb21 |
| Hours                 |                   |            |           |
| 0 - 0.5               | 50%               | 30%        | 63%       |
| 0.5 - 1.0             | 20%               | 19%        | 18%       |
| 1.0 - 1.5             | 15%               | 21%        | 10%       |
| 1.5 - 2.0             | 11%               | 13%        | 6%        |
| 2.0 - 2.5             | 3%                | 9%         | 1%        |
| 2.5 - 3.0             | 1%                | 4%         | 1%        |
| 3.0 - 3.5             | 0%                | 3%         | 1%        |
| 3.5 - 4.0             | 0%                | 1%         | 0%        |
| 4.0 - 4.5             | 0%                | 0%         | 0%        |
| 4.5 +                 |                   |            |           |

Less than 2hrs – 96%      83%      97%

Average DoS      0:59      1:26      0:53

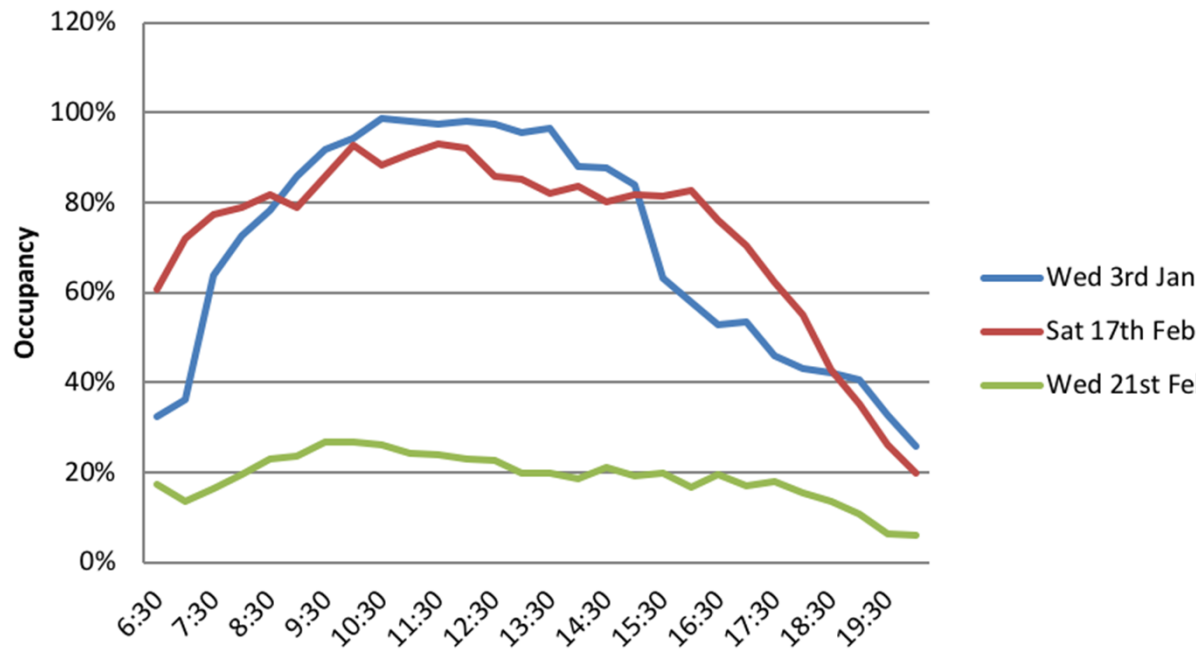
# Woods Car Parking Areas



**No time restrictions**

**Total 371 Spaces**

**Noosa Woods Parking NW1 - NW5**



| Noosa Woods (NW1-5) |                   |            |            |
|---------------------|-------------------|------------|------------|
| Duration of Stay    | % of Total Spaces |            |            |
| Hours               | Wed Jan 3         | Sat Feb 17 | Wed Feb 21 |
| 0 - 0.5             | 19%               | 28%        | 41%        |
| 0.5 - 1.0           | 20%               | 21%        | 19%        |
| 1.0 - 1.5           | 14%               | 14%        | 8%         |
| 1.5 - 2.0           | 13%               | 11%        | 8%         |
| 2.0 - 2.5           | 9%                | 6%         | 3%         |
| 2.5 - 3.0           | 5%                | 5%         | 4%         |
| 3.0 - 3.5           | 4%                | 3%         | 4%         |
| 3.5 - 4.0           | 5%                | 2%         | 1%         |
| 4.0 - 4.5           | 2%                | 1%         | 1%         |
| 4.5 +               | 9%                | 9%         | 11%        |

Less than 2hrs – 66%                      74%                      76%

Average DoS                      2:15                      1:51                      1:51

# Face to Face Interview Surveys



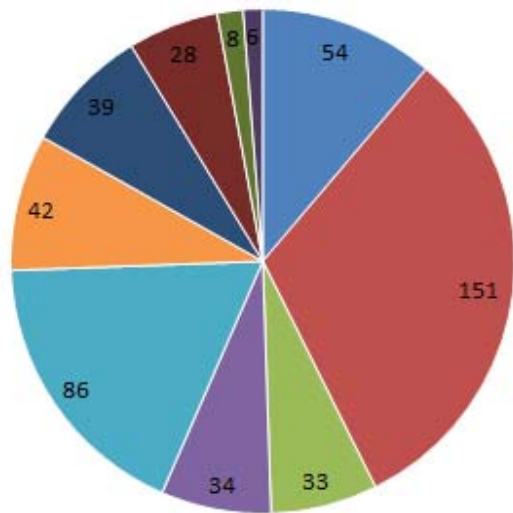
- Surveys conducted between 7:00am and 8:00pm on survey days
- 13 Questions taking about 5-7 minutes
- Interviewers located at;
  - beach near SLSC tower
  - police beat
  - Noosa woods
  - roving

| Date                        | Number of Surveys |
|-----------------------------|-------------------|
| Wed 3 <sup>rd</sup> January | 269               |
| Sat 17 <sup>th</sup> Feb    | 222               |
| Wed 21 <sup>st</sup> Feb    | 216               |
| <b>Total</b>                | <b>707</b>        |

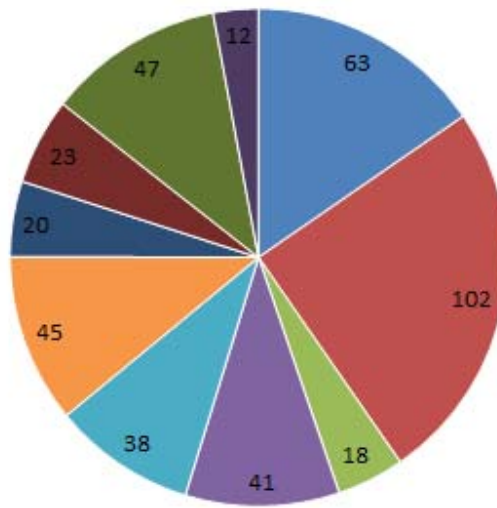
# Interview Survey Results



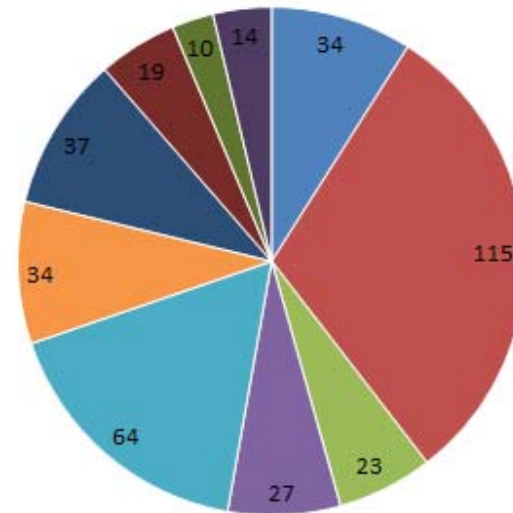
Q1 Would you please tell me why you are generally here in this area today?



Wed 3<sup>rd</sup> January



Sat 17<sup>th</sup> February



Wed 21<sup>st</sup> February

- I live here
- Here for a holiday
- Meeting family / friends
- Restaurant / café
- Beach
- Walking / Exercising
- Leisure
- Shopping
- Work
- Another reason

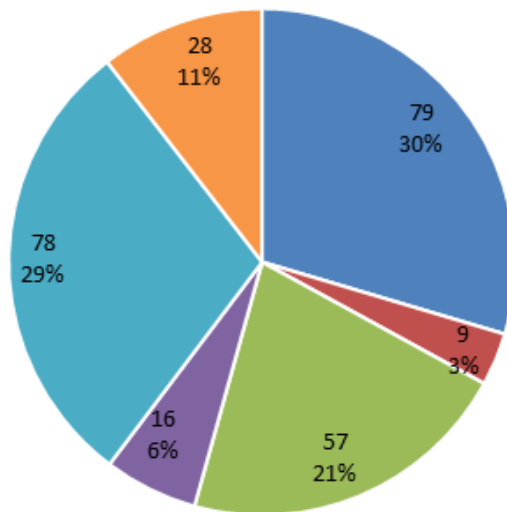
\* Multiple answers permitted

**Majority of respondents there for a holiday, going to the beach or live in the area**

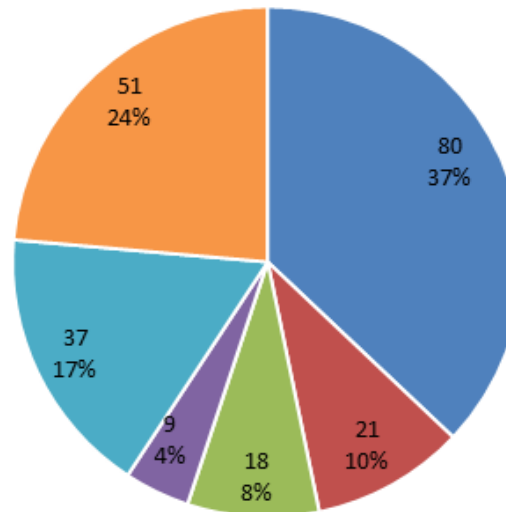
# Interview Survey Results



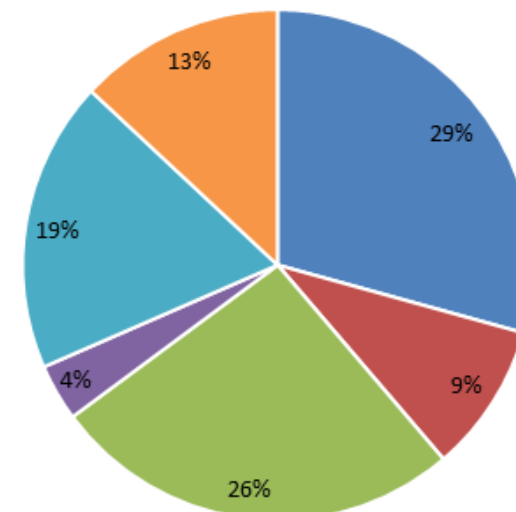
Q2 Where do you usually reside?



Wed 3<sup>rd</sup> January



Sat 17<sup>th</sup> February



Wed 21<sup>st</sup> February

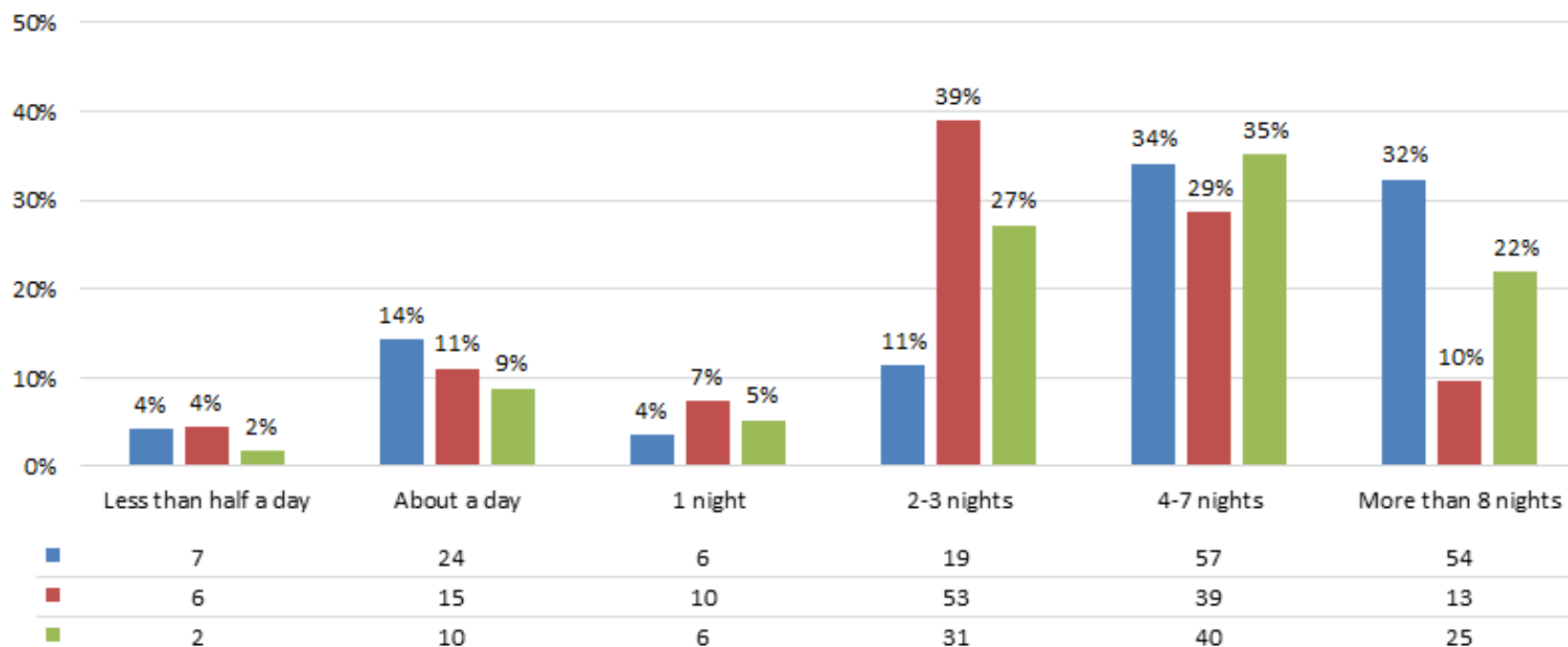
- Noosa Council region
- Sunshine Coast Council region
- Brisbane / Gold Coast
- Other Queensland
- Interstate
- Overseas

**Noosa residents consisted of 29-37% of respondents**

# Interview Survey Results



Q3 As part of your entire stay, how long do you plan to stay in Noosa or the surrounding area?



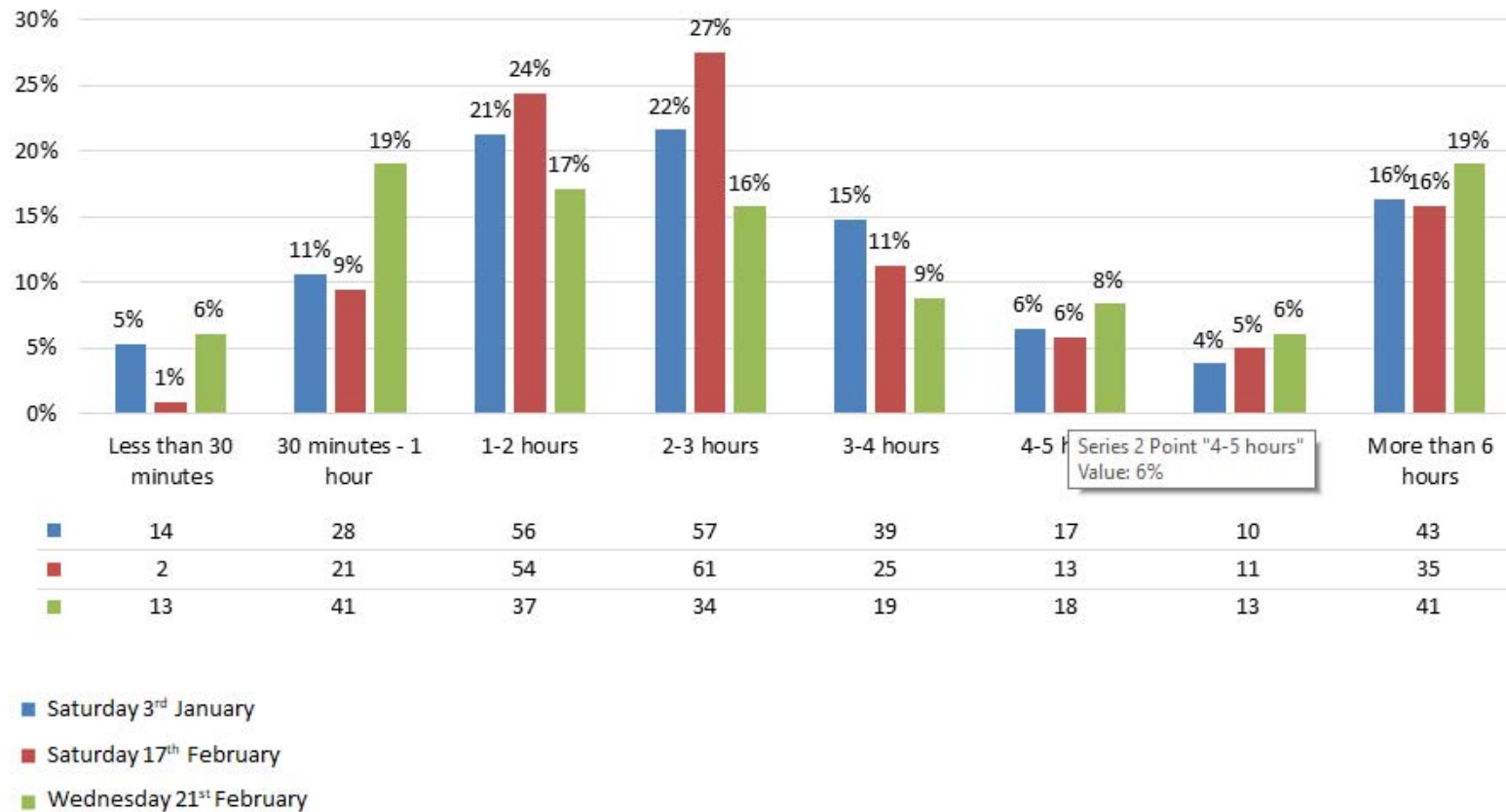
- Saturday 3<sup>rd</sup> January
- Saturday 17<sup>th</sup> February
- Wednesday 21<sup>st</sup> February

\* Visitors to Noosa only

# Interview Survey Results



Q4 How long do you plan to stay in the Hastings Street / Noosa Woods area today?

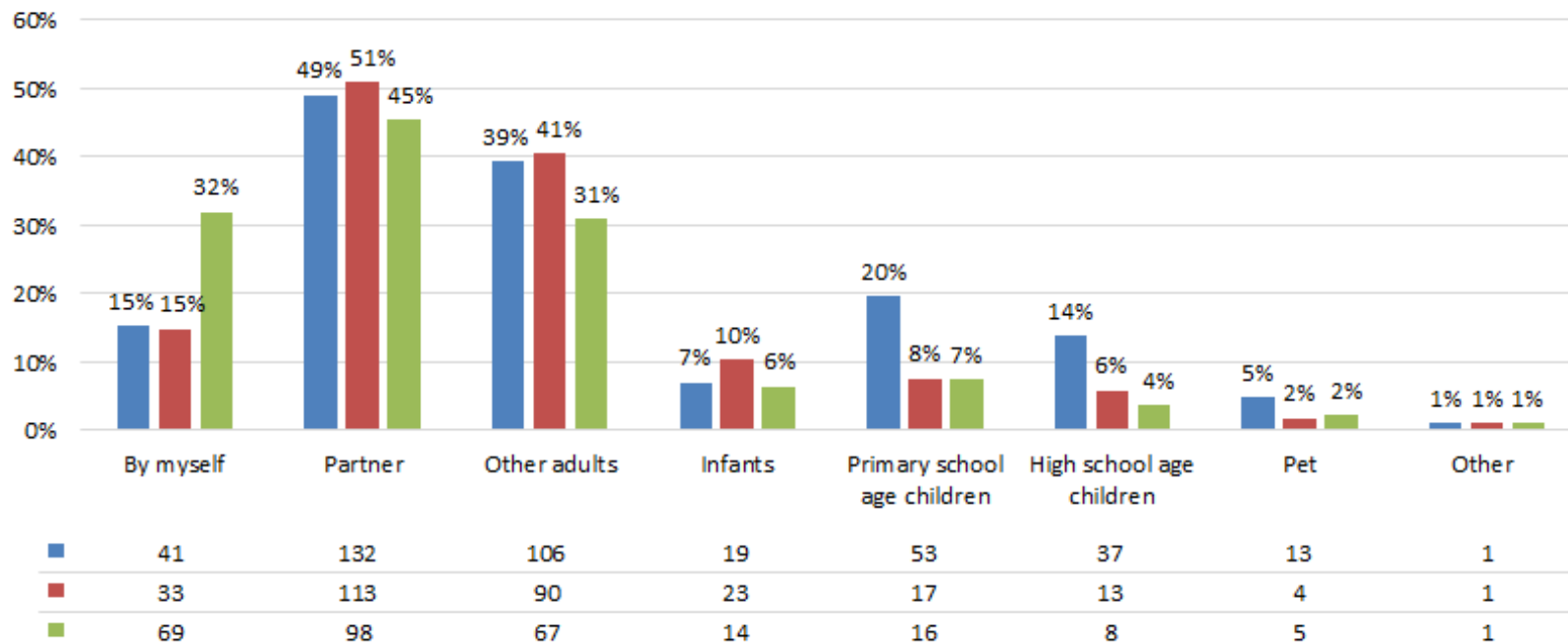


**Majority of respondents stayed between 1-3 hours**

# Interview Survey Results



Q5 Who are you here with today?



- Saturday 3<sup>rd</sup> January
- Saturday 17<sup>th</sup> February
- Wednesday 21<sup>st</sup> February

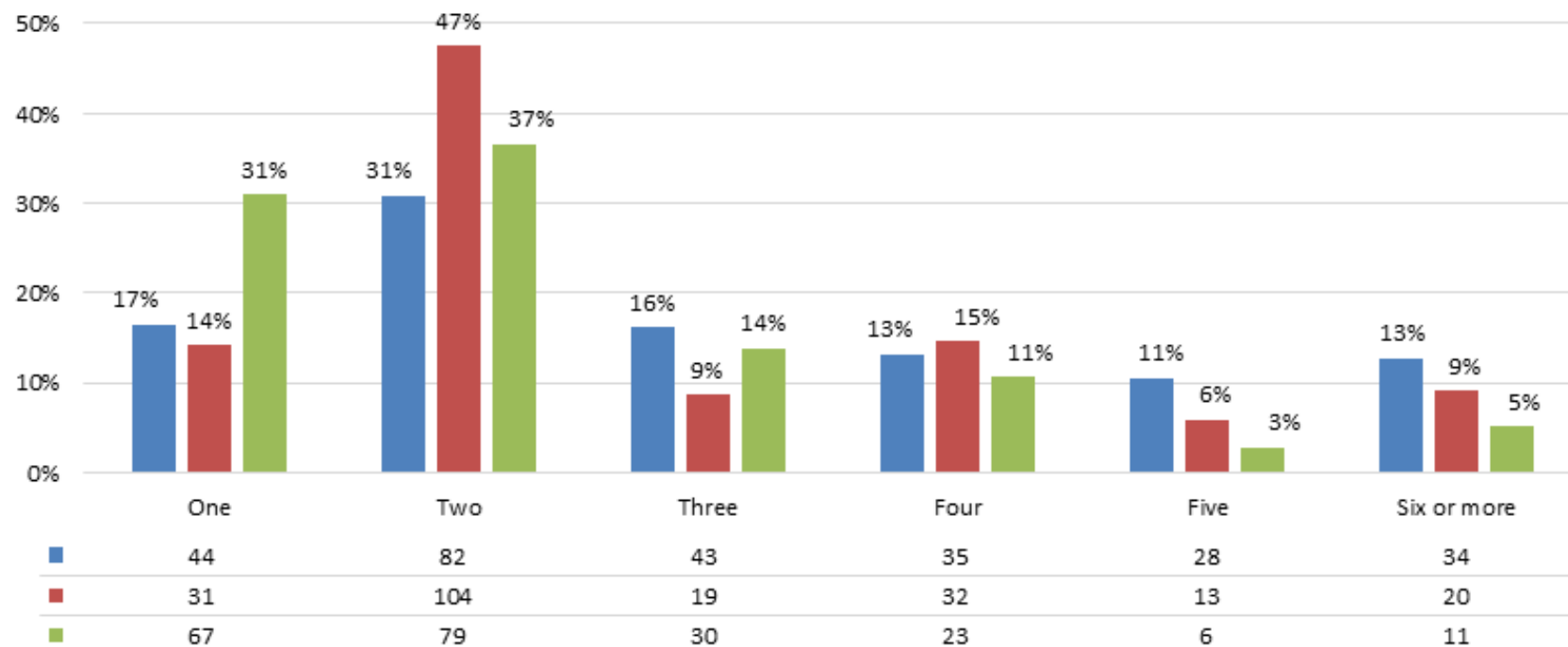
\* Multiple answers permitted



# Interview Survey Results



Q6 Including yourself, how many are in your group here today?

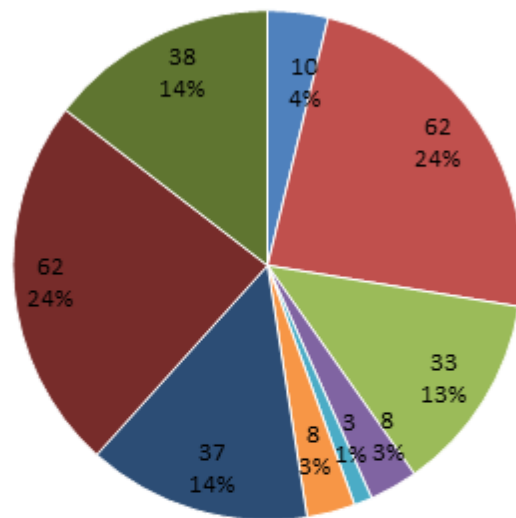


- Saturday 3<sup>rd</sup> January
- Saturday 17<sup>th</sup> February
- Wednesday 21<sup>st</sup> February

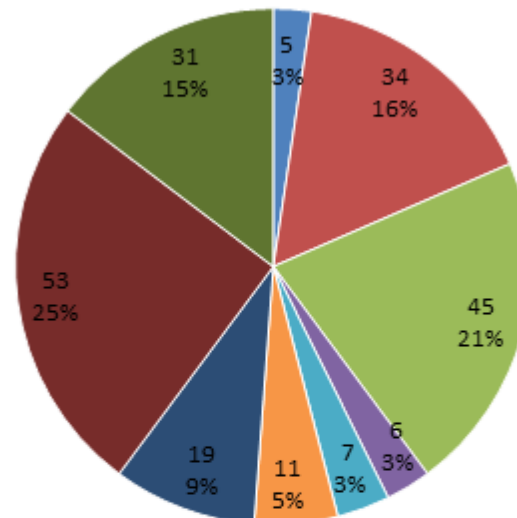
# Interview Survey Results



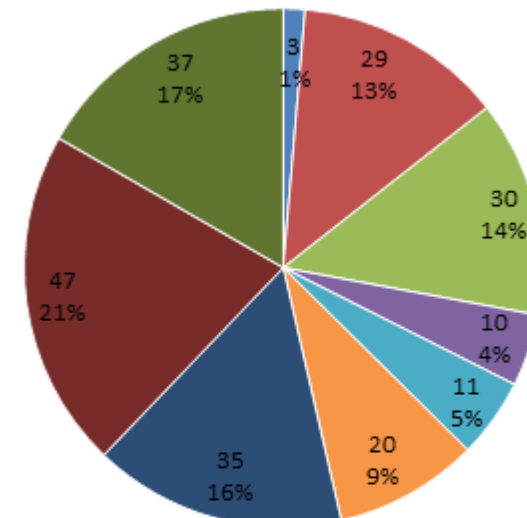
Q7 How often do you come to the Hastings Street / Noosa Woods / Beach area?



Sat 3<sup>rd</sup> January



Sat 17<sup>th</sup> February



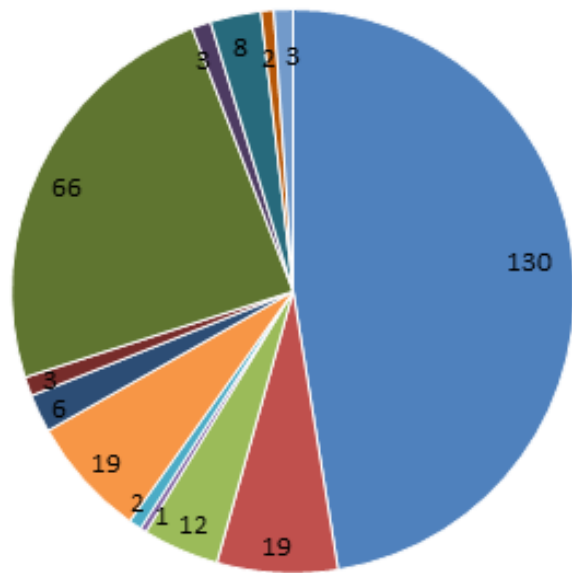
Wed 21<sup>st</sup> February

- More than once a day
- Once a month
- Once a day
- 2-3 times a year
- 2-5 times a week
- Annually or less frequently
- Weekly
- First time visiting
- Once a fortnight

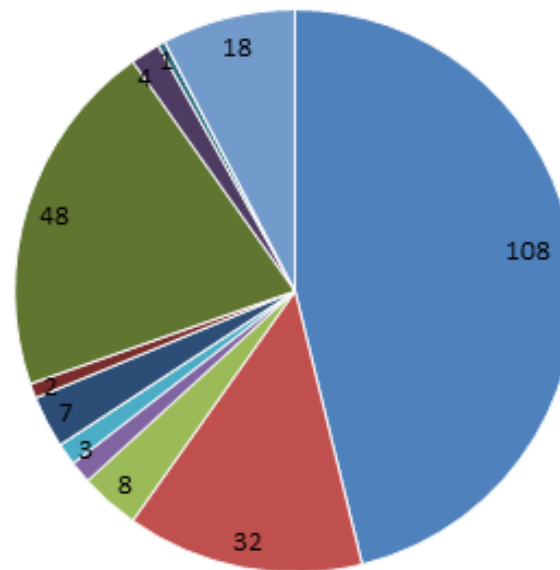
# Mode of Transport – All Respondents



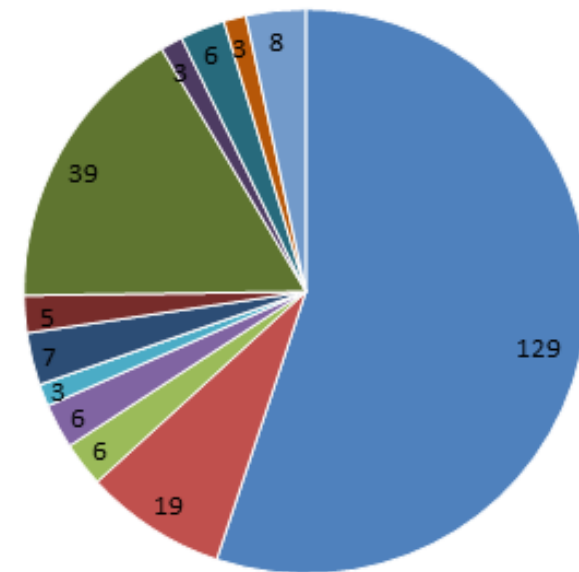
Q8 What type of transport did you use to come to Hastings Street / Noosa Woods area today?



Wed 3<sup>rd</sup> January



Sat 17<sup>th</sup> February



Wed 21<sup>st</sup> February

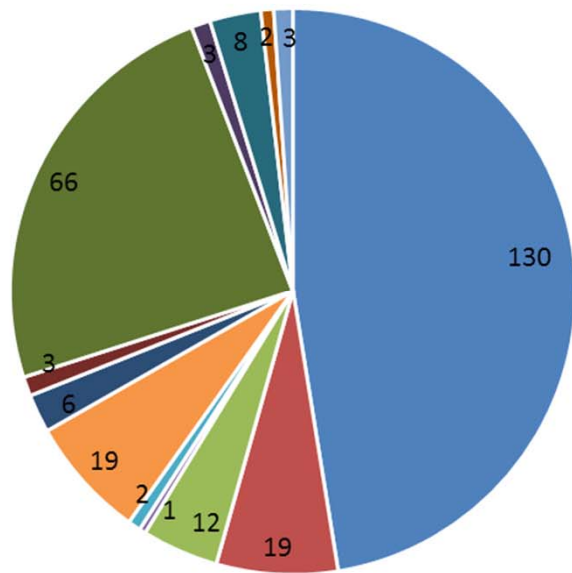
- Own car
- Hire car
- Someone else's car
- Dropped off
- Taxi / Uber
- Free bus
- Paid for a public bus
- Guest shuttle
- Walked
- Motorbike / scooter
- Bicycle
- Ferry or boat
- Other

\* Multiple answers permitted

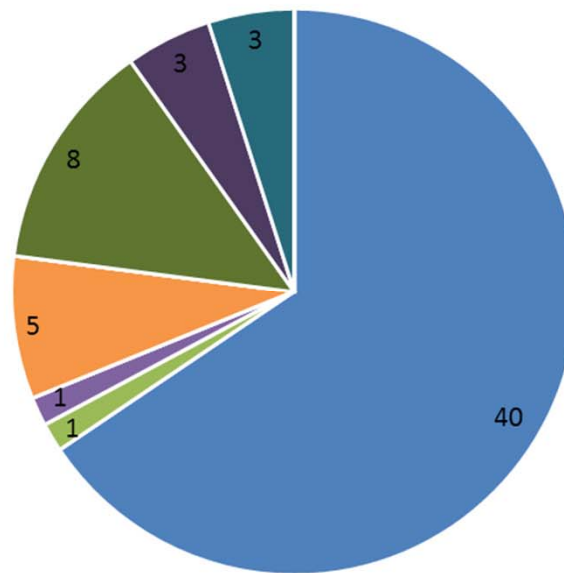
# Mode of Transport – Wed 3<sup>rd</sup> January



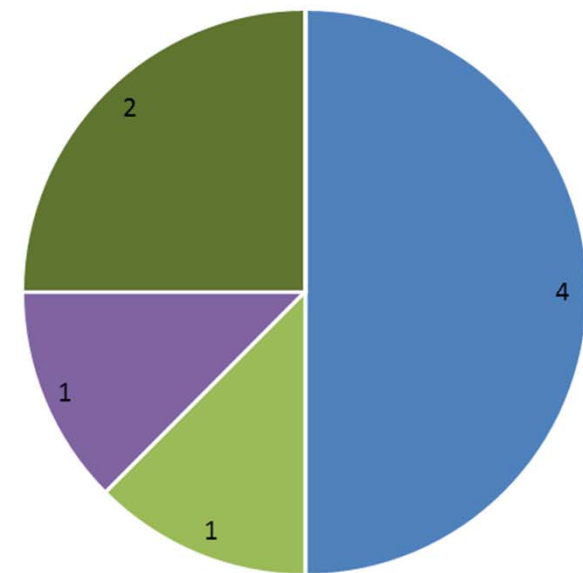
Q8 What type of transport did you use to come to Hastings Street / Noosa Woods area today?



All respondents



Noosa Residents



Workers

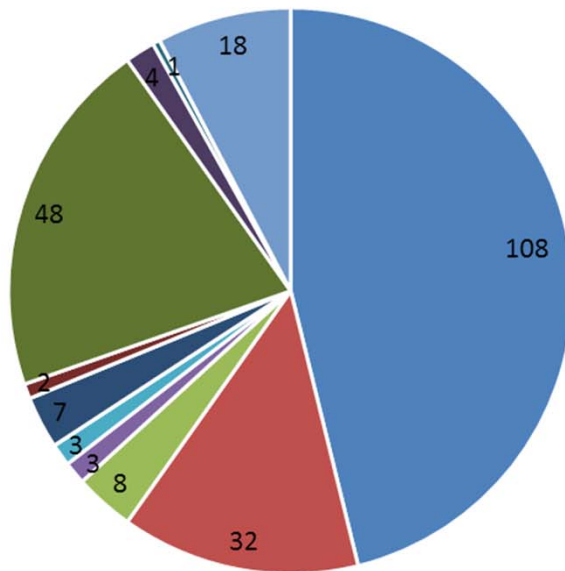
- Own car
- Hire car
- Some one else's car
- Dropped off
- Taxi / Uber
- Free bus
- Paid for a public bus
- Guest shuttle
- Walked
- Motorbike / scooter
- Bicycle
- Ferry or boat
- Other

\* Multiple answers permitted

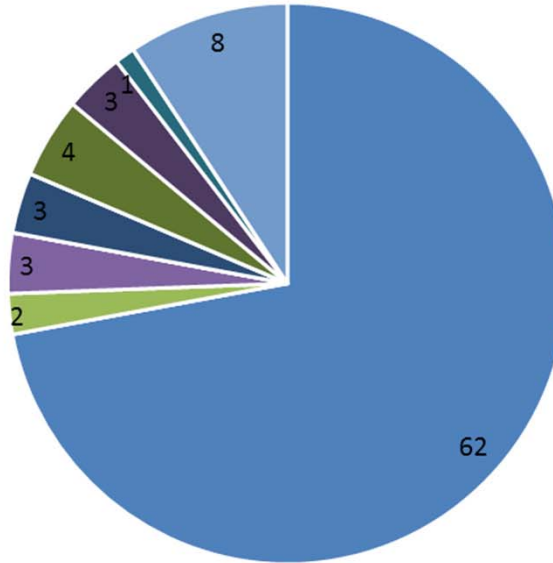
# Mode of Transport – Wed 21<sup>st</sup> February



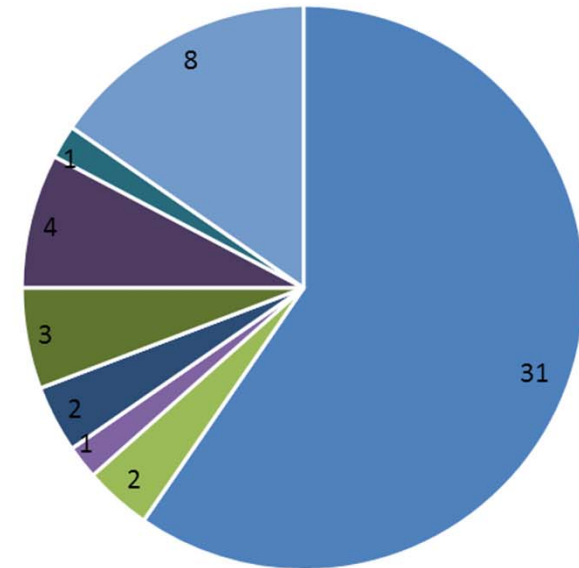
Q8 What type of transport did you use to come to Hastings Street / Noosa Woods area today?



All respondents



Noosa Residents



Workers

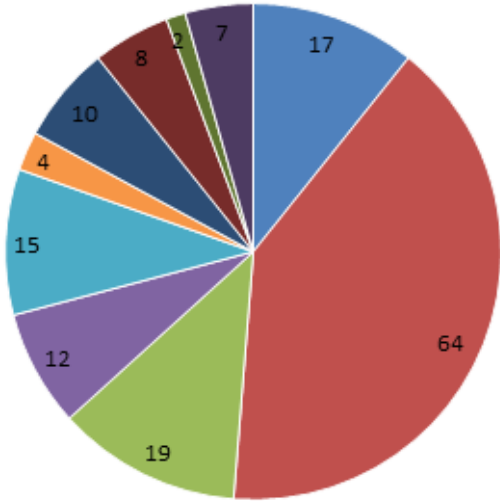
- Own car
- Hire car
- Some one else's car
- Dropped off
- Taxi / Uber
- Free bus
- Paid for a public bus
- Guest shuttle
- Walked
- Motorbike / scooter
- Bicycle
- Ferry or boat
- Other

\* Multiple answers permitted

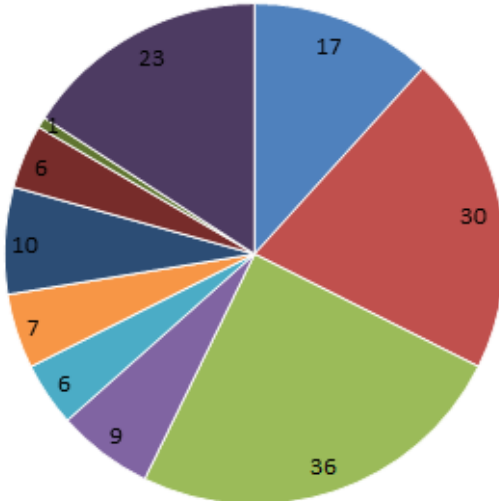
# Interview Survey Results



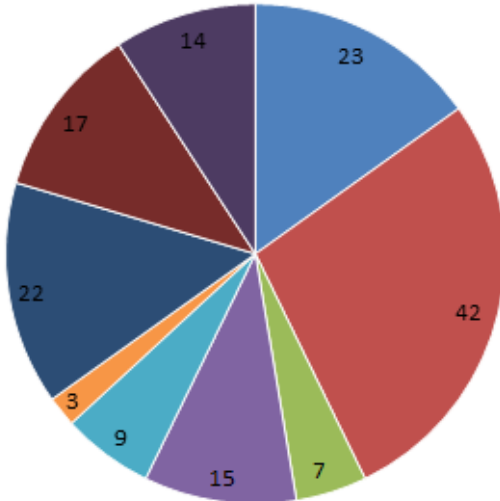
Q9 Where did you park today?



Wed 3<sup>rd</sup> January



Sat 17<sup>th</sup> February



Wed 21<sup>st</sup> February

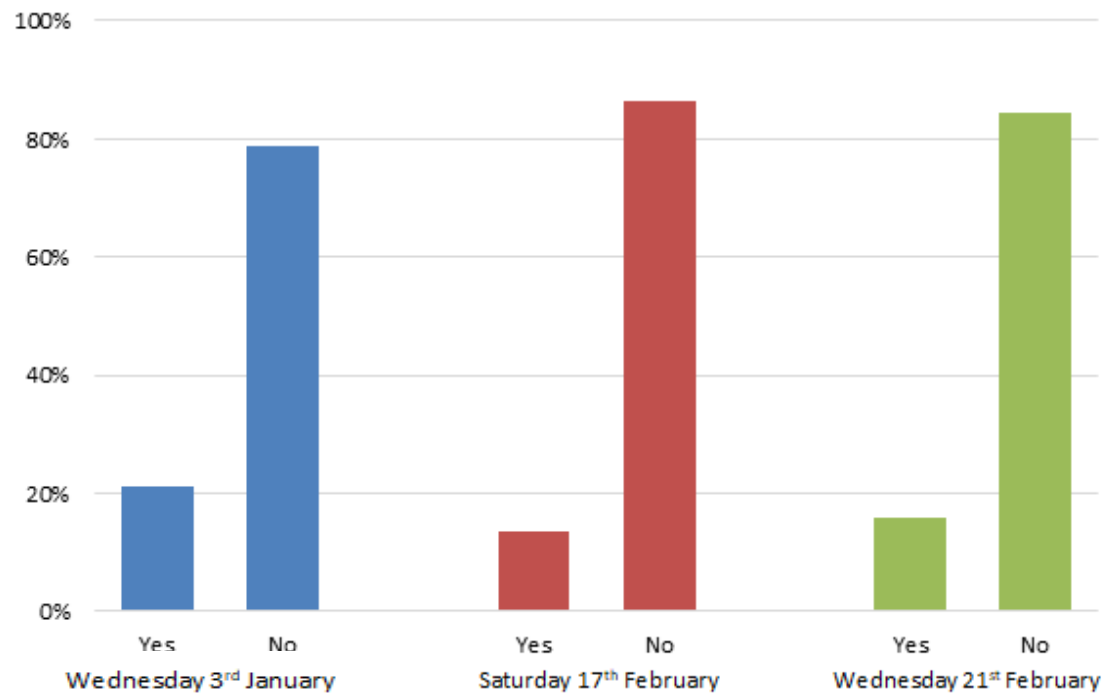
- Hastings Street
- Noosa Woods/ Spit
- Surf Life Saving Club
- Maze car park behind Police Beat
- Lions Park
- Bay Village
- Accommodation provided parking
- Local Streets (excluding Hastings)
- National Park
- Other

\* if travelled by car

# Interview Survey Results



Q10 When you were preparing to come here today, did you consider alternative transport to a car?

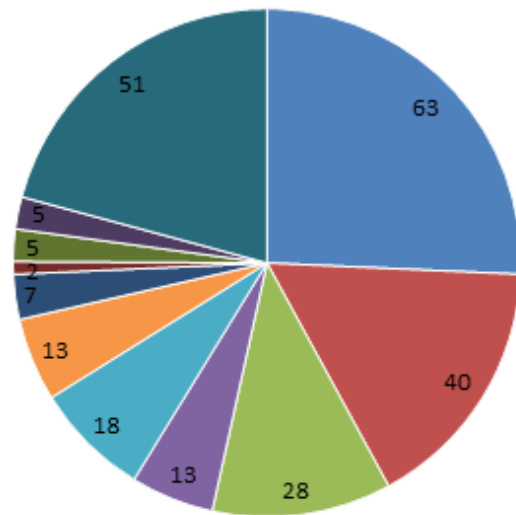


\* if travelled by car

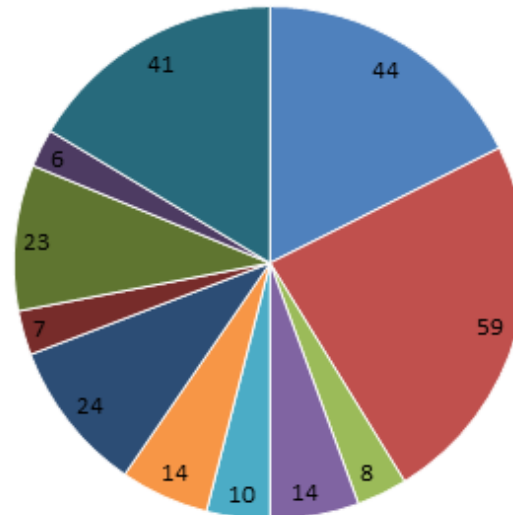
# Interview Survey Results



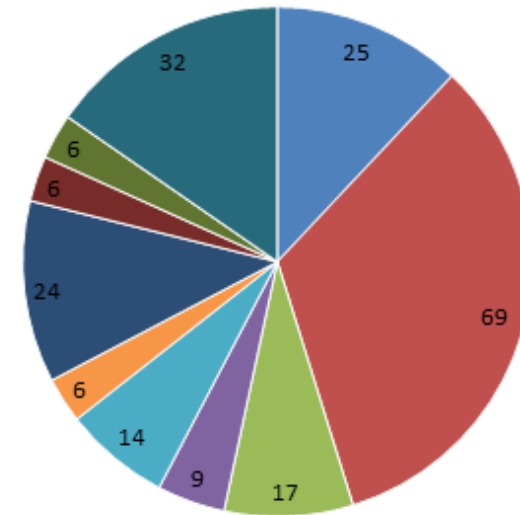
Q11 Can you tell me why you chose to use your car today?



Wed 3<sup>rd</sup> January



Sat 17<sup>th</sup> February



Wed 21<sup>st</sup> February

- Did not think of other transport options
- Convenience of a car
- Could not bring what we needed on public transport
- Public transport not available in area
- Public transport too hard with kids
- Had to do other things / go other places as part of this trip
- Public transport route or time not suitable
- Not enough time
- Weather too hot / too wet
- Did not know about other transport options
- Other reasons

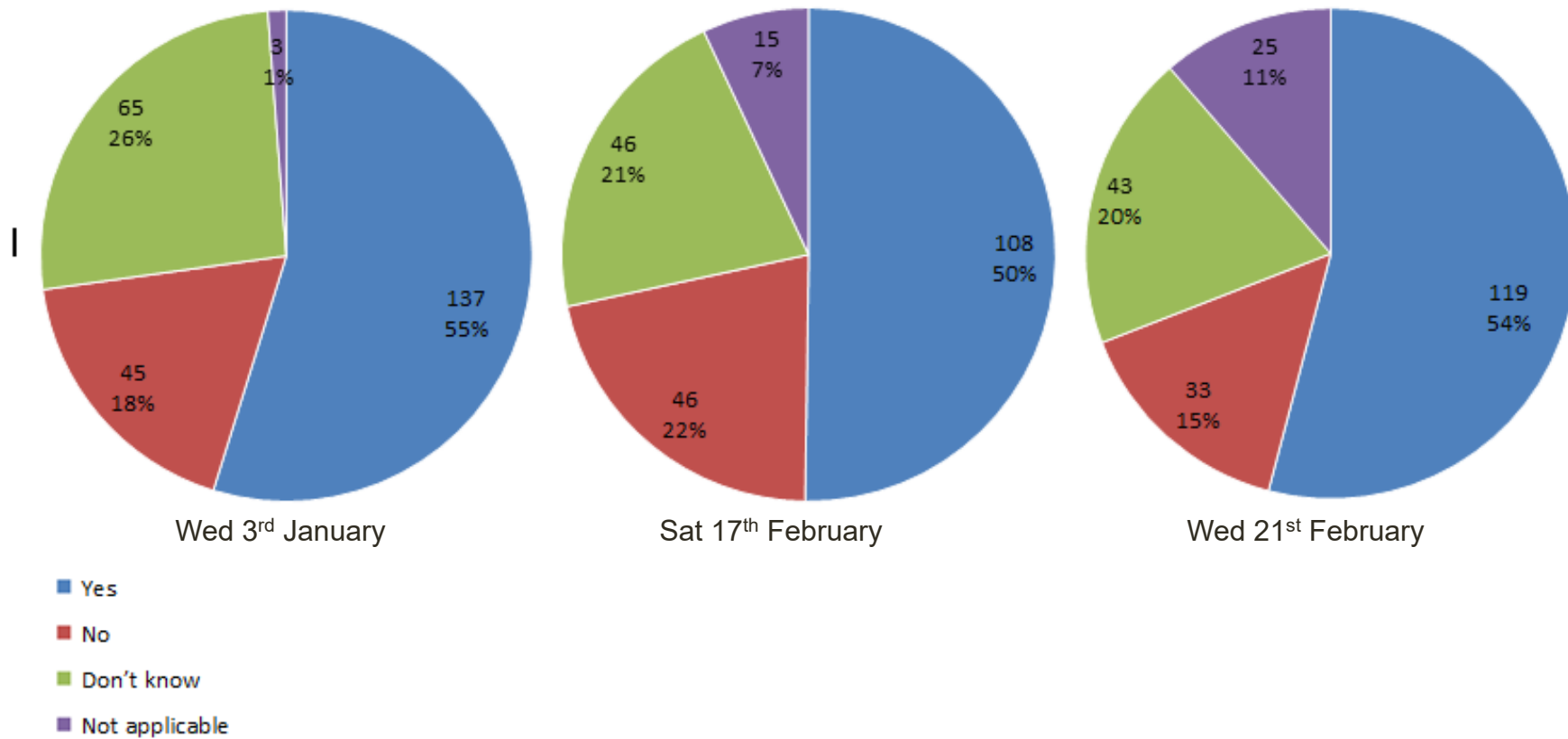
\* Multiple answers permitted



# Interview Survey Results



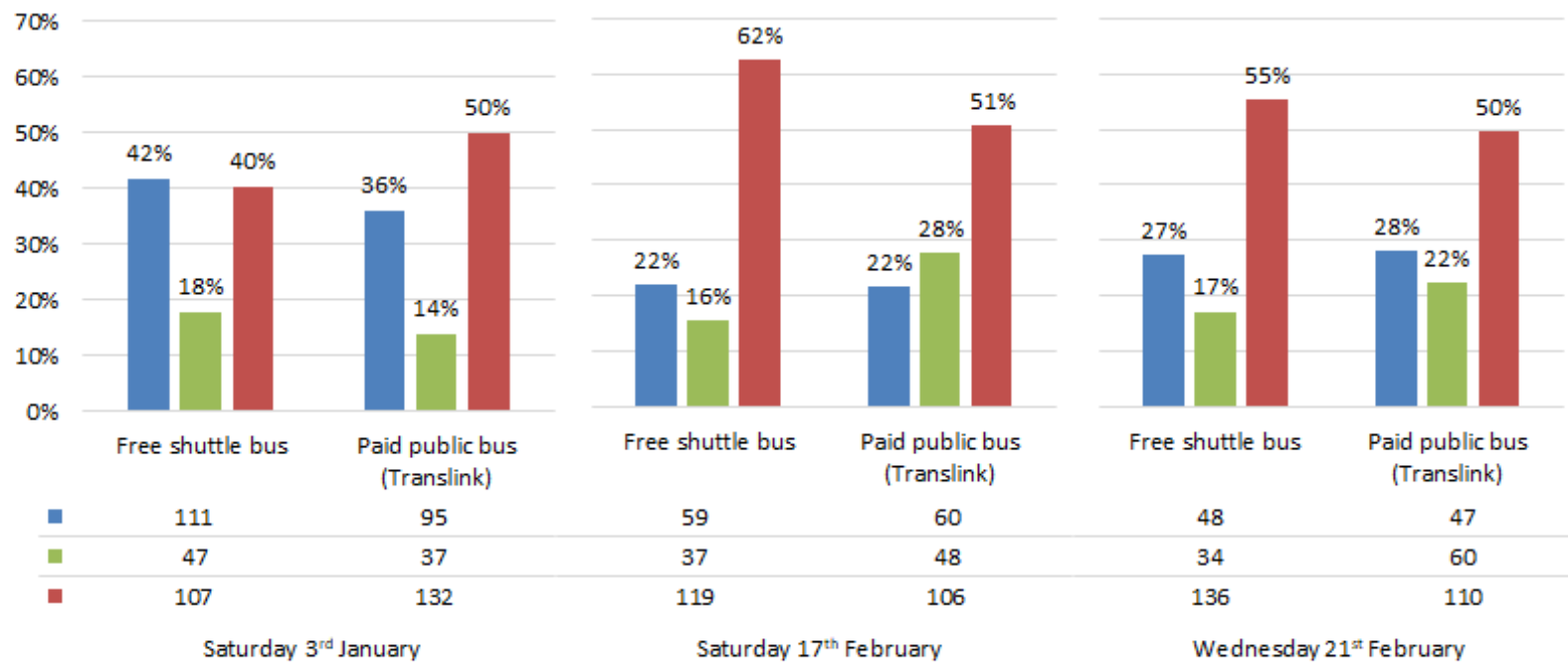
Q12. Is there public transport within a short walk of your accommodation / home for your journey today?



# Interview Survey Results

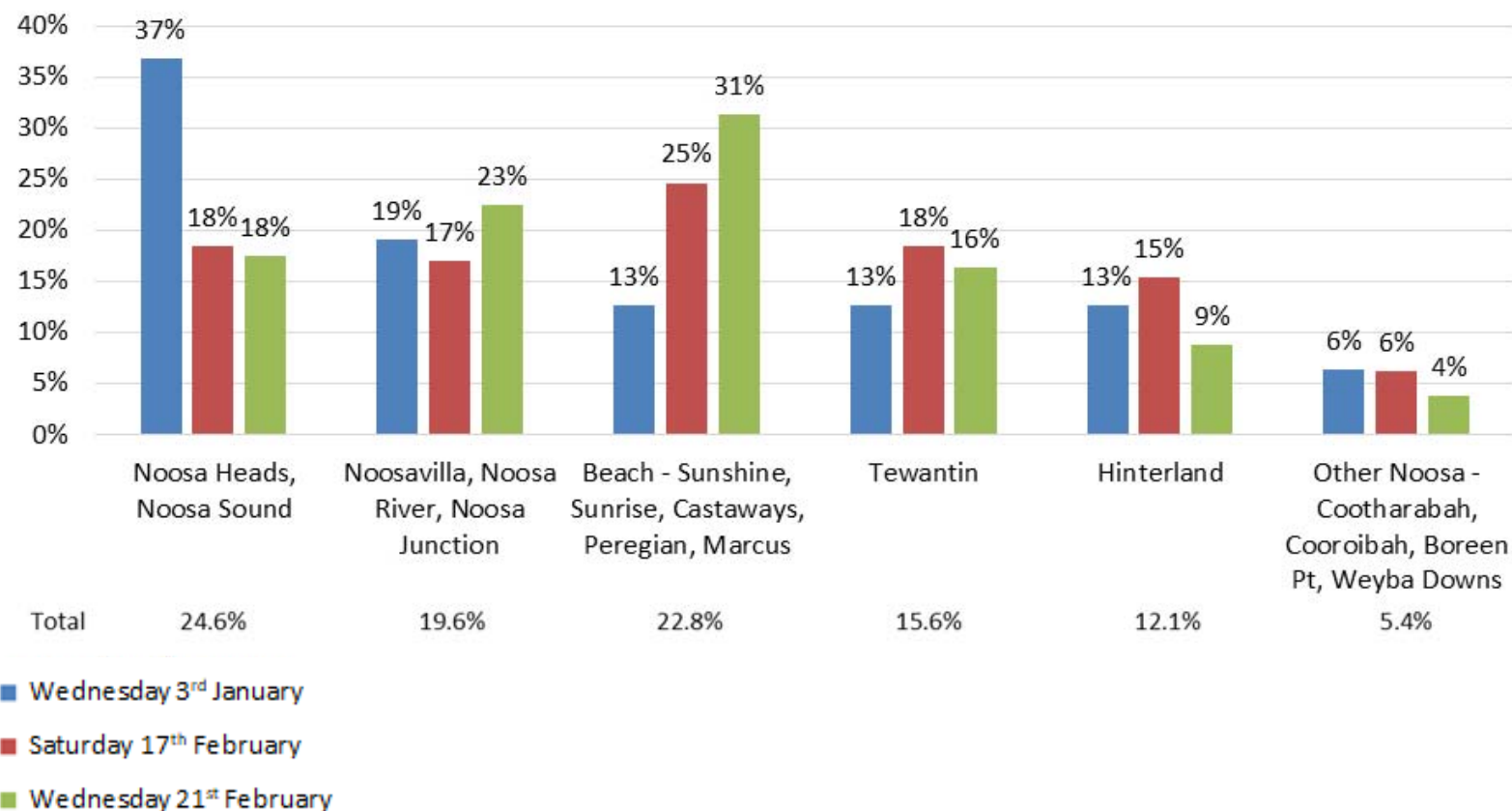


Q13 To what extent are you familiar with the free and paid bus options for getting here?



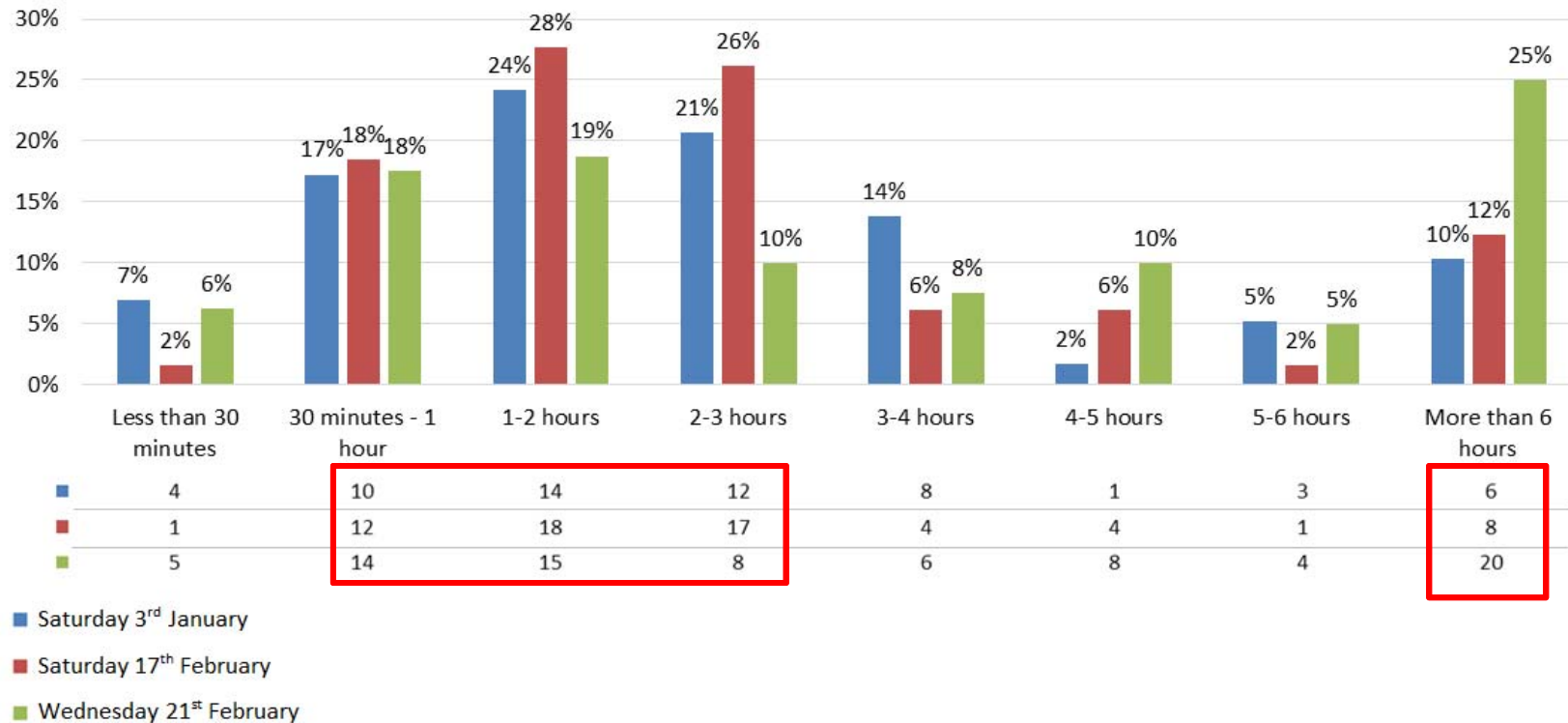
- Very familiar
- Somewhat familiar
- Not at all familiar

# Noosa Residents – place of residence



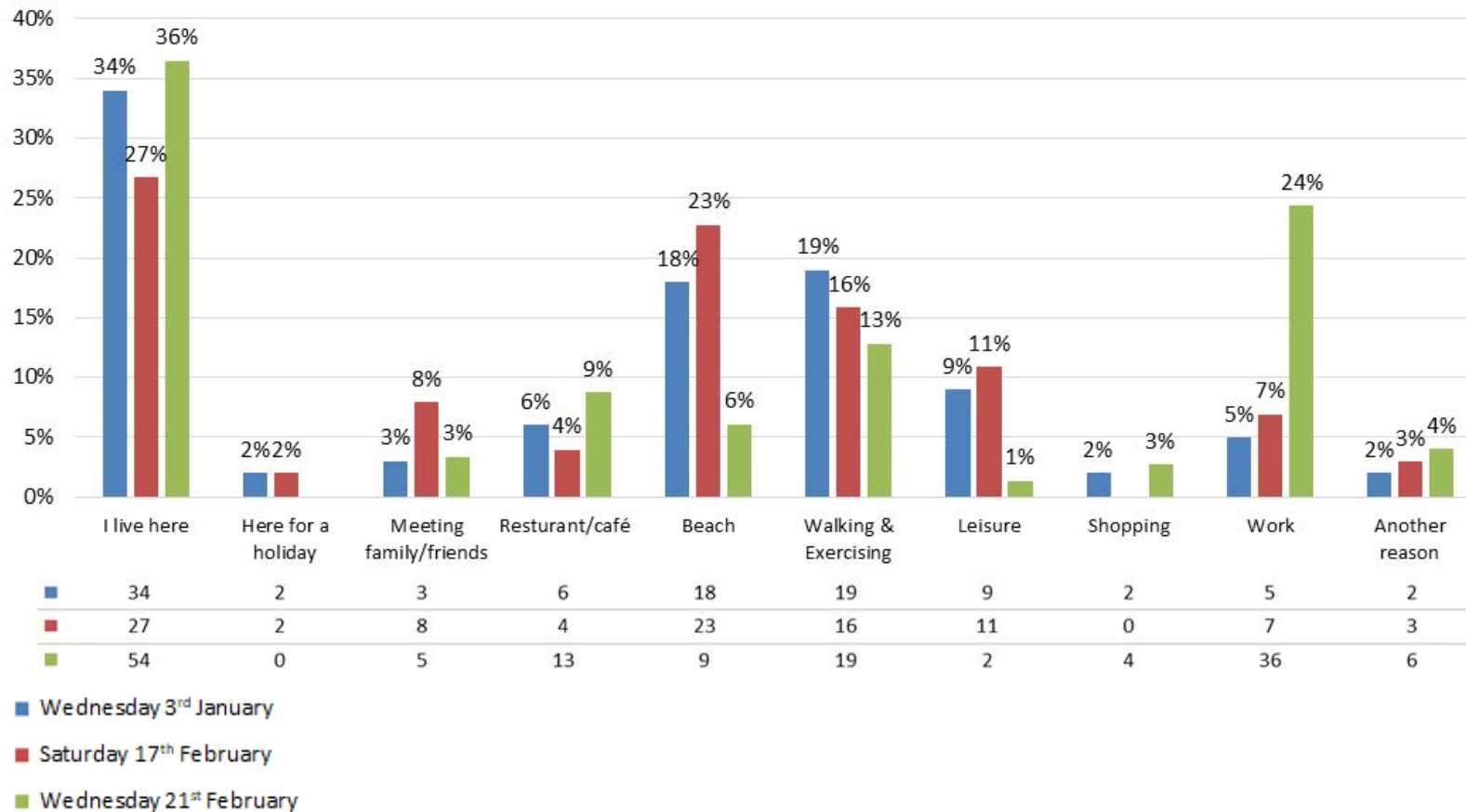
*Noosa Residents respondents' origins were evenly distributed across Shire*

# Noosa Residents - Length of Stay



***Noosa residents stayed between 30mins to 3hrs***

# Noosa Residents - Reasons why there



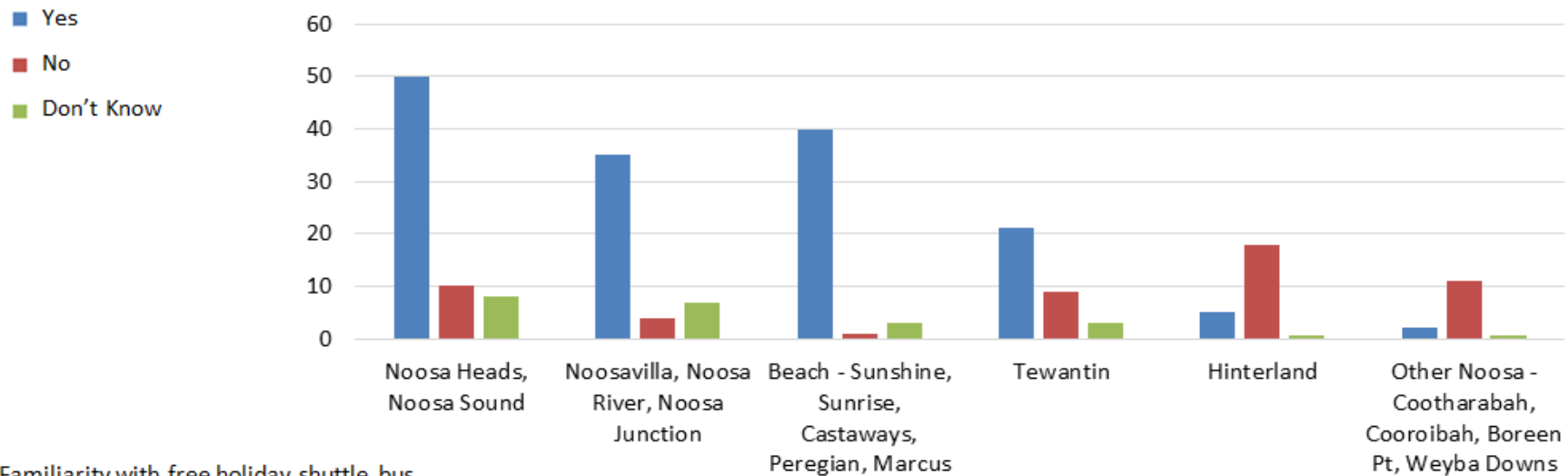
***Noosa residents mainly came to the precinct for the beach, walking/exercising and to work***

# Noosa Residents – familiarity with transport options



## Is there public transport within a short walk of your home for your journey today?

(data from the three survey days has been combined)



### Familiarity with free holiday shuttle bus

|                     |    |    |    |    |    |   |
|---------------------|----|----|----|----|----|---|
| Very familiar       | 51 | 32 | 31 | 27 | 11 | 8 |
| Somewhat familiar   | 11 | 10 | 8  | 3  | 9  | 4 |
| Not at all familiar | 9  | 6  | 6  | 3  | 7  | 1 |

### Familiarity with paid public transport

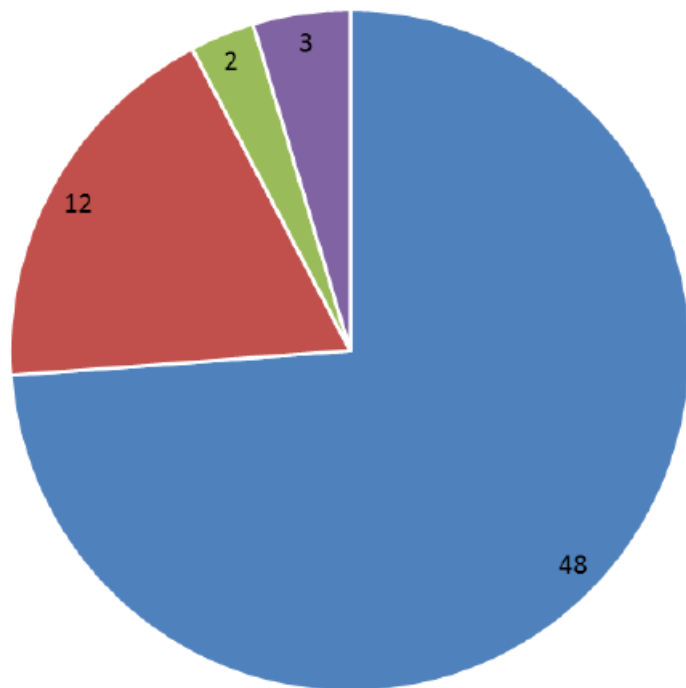
|                     |    |    |    |    |    |   |
|---------------------|----|----|----|----|----|---|
| Very familiar       | 50 | 32 | 29 | 24 | 8  | 9 |
| Somewhat familiar   | 15 | 8  | 10 | 1  | 8  | 1 |
| Not at all familiar | 7  | 8  | 6  | 8  | 11 | 3 |

***The majority of Noosa residents were very familiar with the free bus and PT***

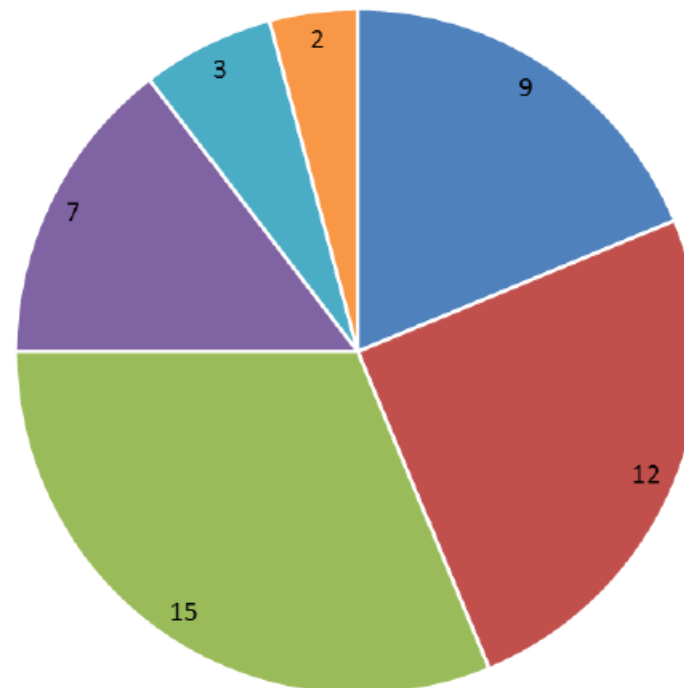
# Workers – Place of residence



Q: Where do you usually reside? (workers only)



- Noosa Council Region
- Sunshine Coast Council Region
- Brisbane & Gold Coast
- Other Queensland
- Interstate
- Overseas



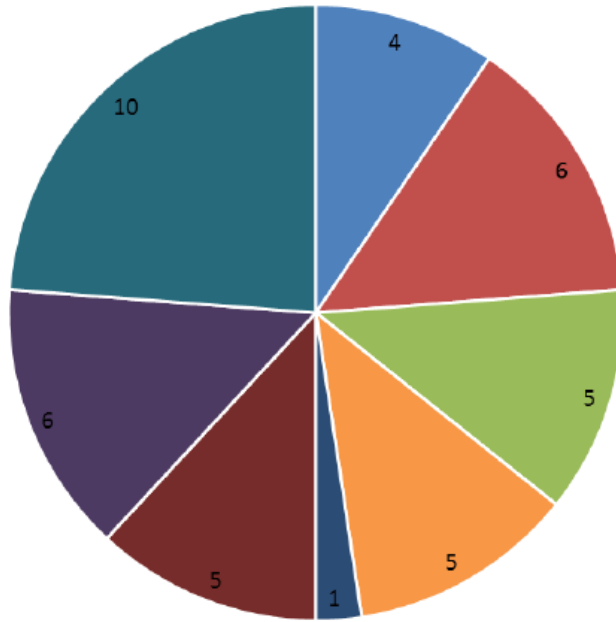
- Noosa Heads, Noosa Sound
- Noosavilla, Noosa River, Noosa Junction
- Beach - Sunshine, Sunrise, Castaways, Peregian, Marcus
- Tewantin
- Hinterland
- Other Noosa - Cootharabah, Cooroibah, Boreen Pt, Weyba Downs

***Almost half of workers interviewed were from Noosa Council area, primarily from coastal locations***

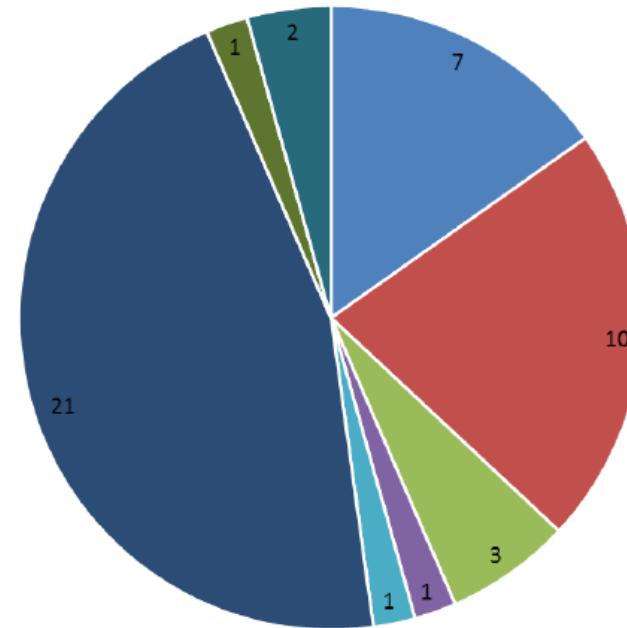
# Workers – Where did you park?



Q: Where did you park today? (for those that used their car)



Workers, all lengths of stay



Non-workers staying six hours or more

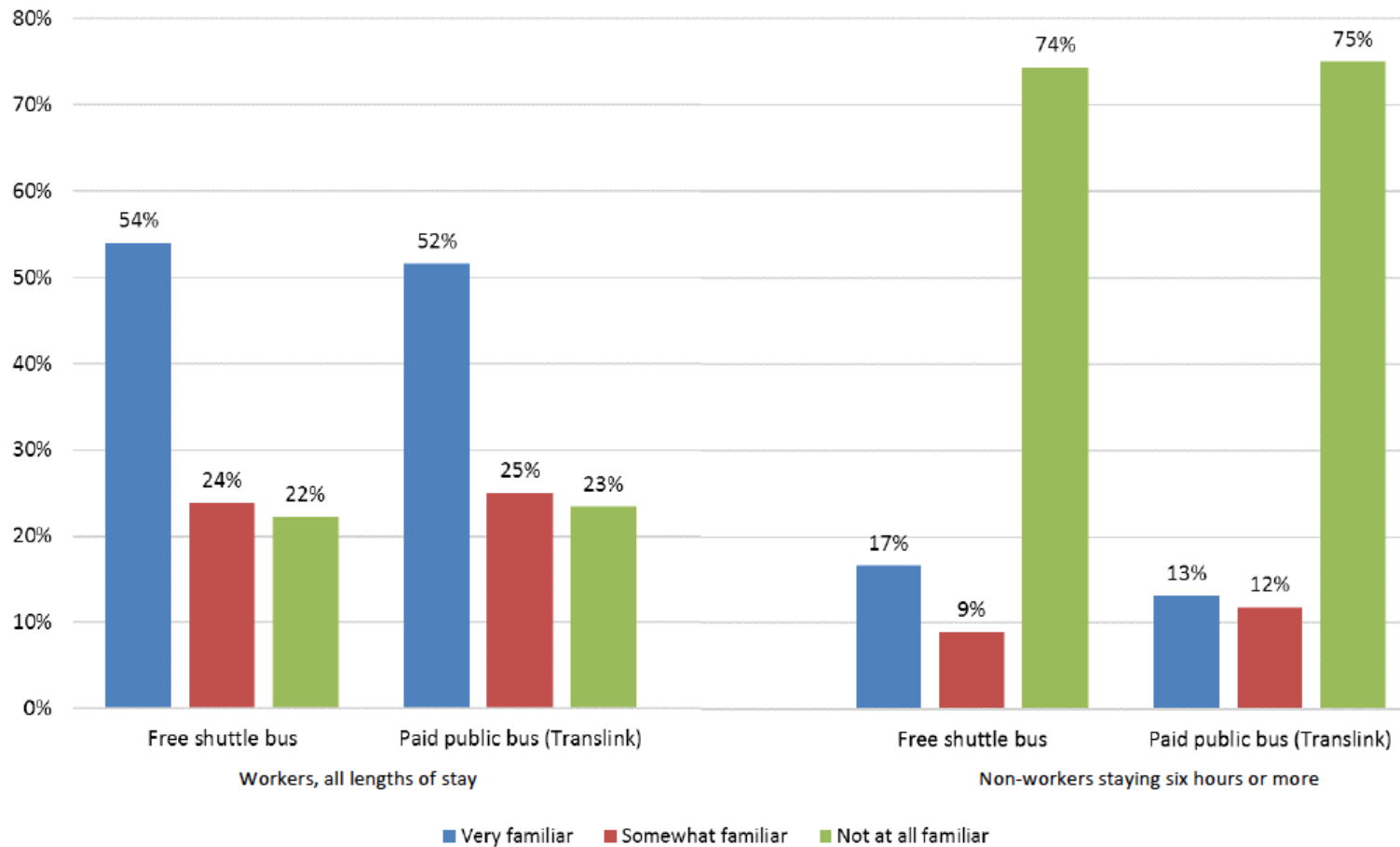
- Hastings Street
- Surf Life Saving Club
- Lions Car Park
- Accommodation provided parking
- National Park
- Other
- Noosa Woods / Spit
- Maze Car Park
- Bay Village Car Park
- Local Streets
- Work provided parking



# Workers – familiarity with transport options



Q: To what extent are you familiar with the free and paid bus options for getting here?

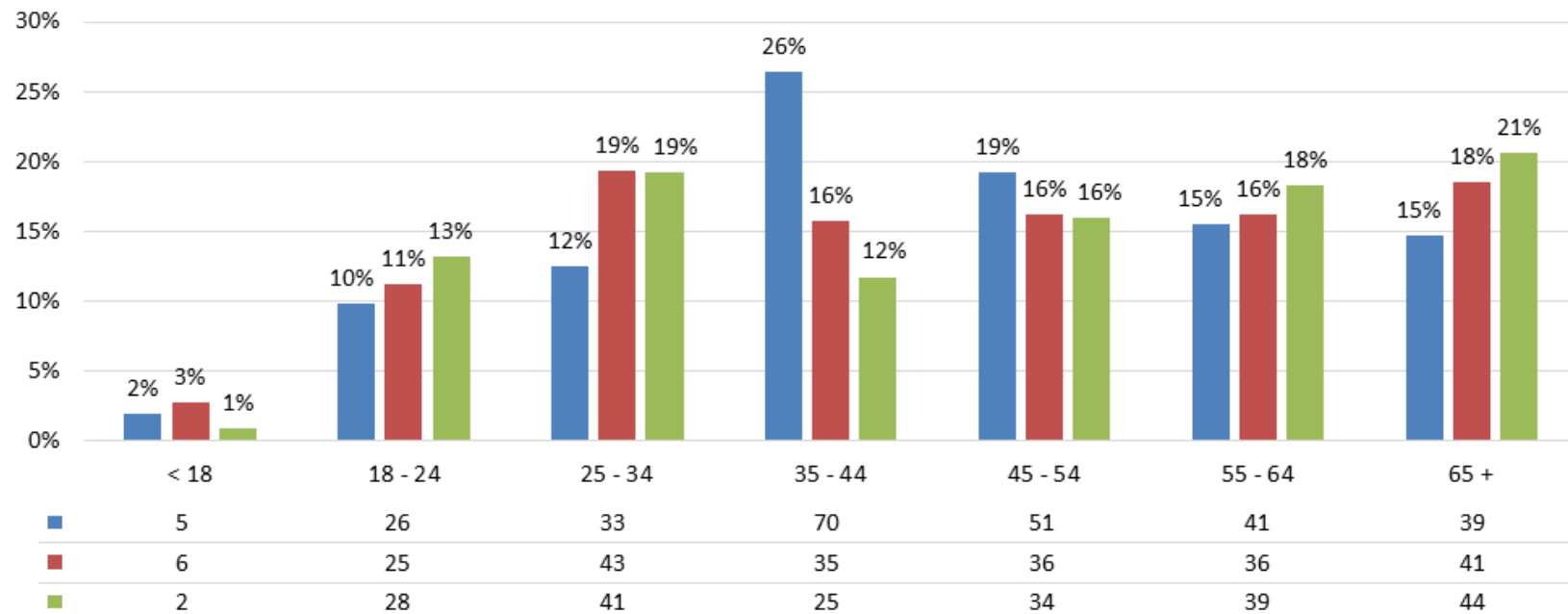


***The majority of workers were familiar with public transport options available, whilst longer stay non-workers were not***

# Interview Survey Results



Q14 Which age group are you in?

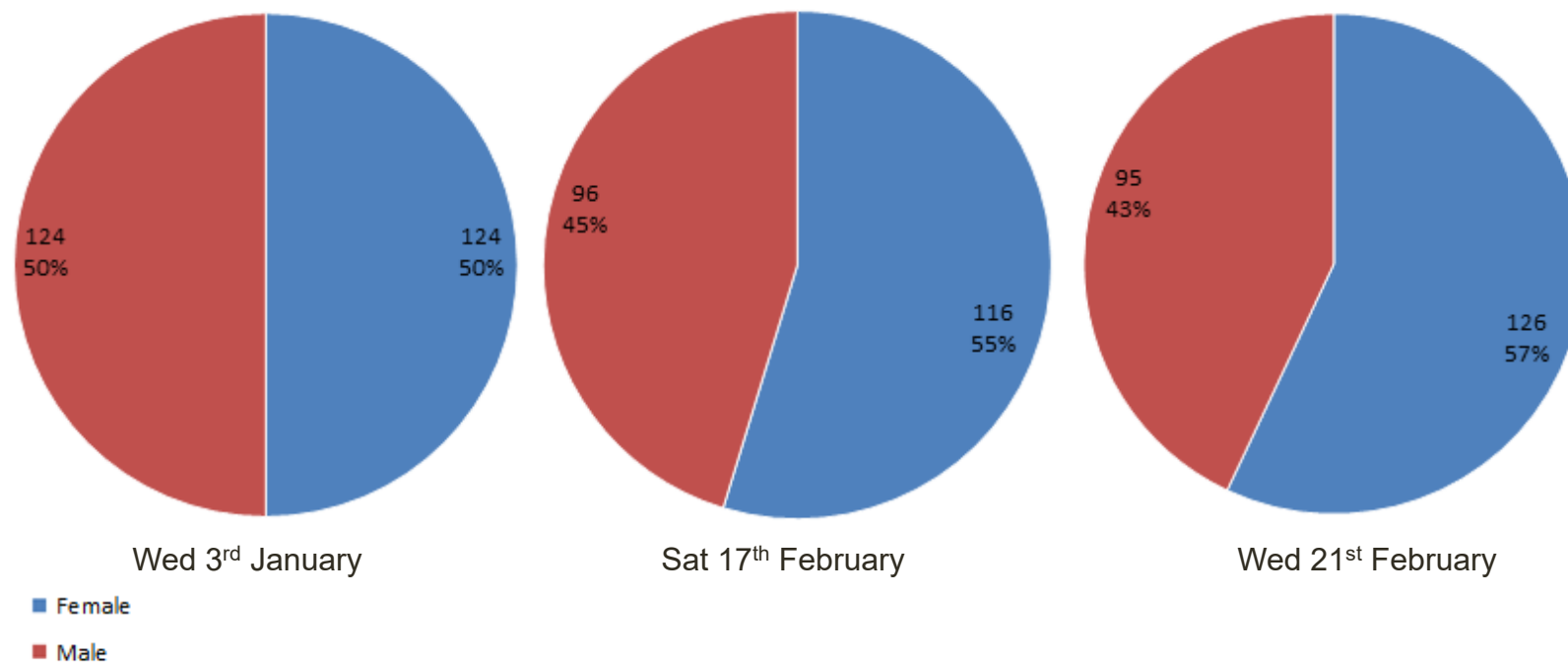


- Wednesday 3<sup>rd</sup> January
- Saturday 17<sup>th</sup> February
- Wednesday 21<sup>st</sup> February

# Interview Survey Results



As part of the interviews, genders of the respondents were also recorded.



# Interview Survey Results



The time of day was also recorded for each interview.

