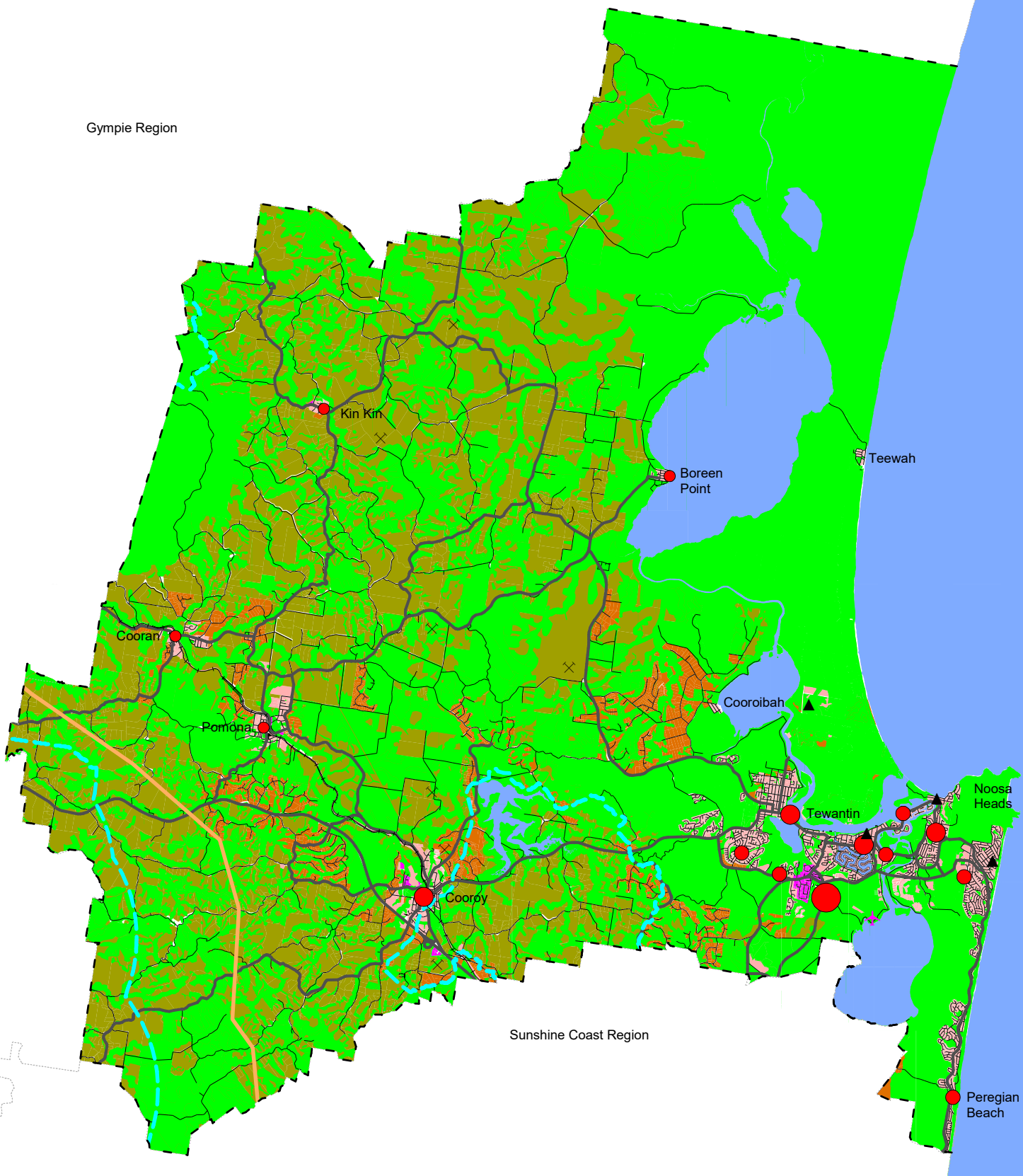


Gympie Region

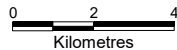


Sunshine Coast Region

Planning Scheme Strategy Map (Map SM)



Scale 1cm : 1.3km



Printed: August 2015
Proposed scheme amendments

The map is a reproduction from Council's GIS, with a scale of accuracy of 1:25 000. Data on which it is based was gathered at mostly finer scales. Precise boundaries may need to be defined by site survey.
Council Copyright Reserved.

Printed: October 2016
Version: Amendments Commenced October 2016

Workspace Location: StrategyMap.wor

- Urban
- Rural Settlement
- Rural
- Areas of Ecological Significance
- Industry

- Railway
- Major Road Network
- Shire Boundary

- Water Supply catchment

- 1 Shire Business Centre
- 2 Business Centre
- 3 Neighbourhood Centre
- 4 Village Centre
- Extractive Resource
- Visitor Centres
- Airports

Approved route for electricity transmission operating works

Note - The Approved route for electricity transmission operating works is exempt from the requirements of The Noosa Plan

