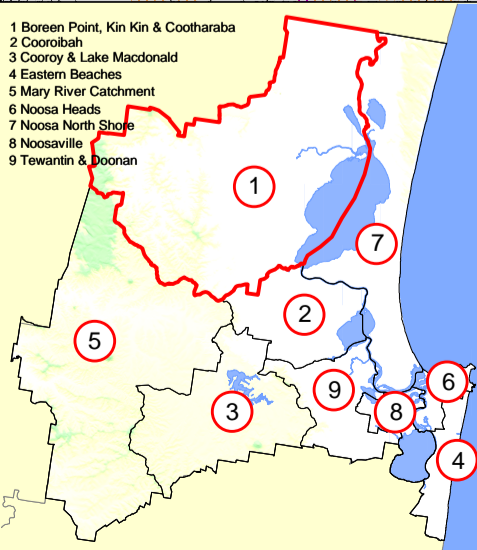
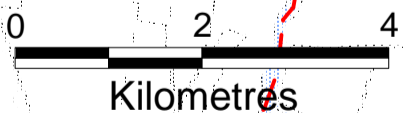
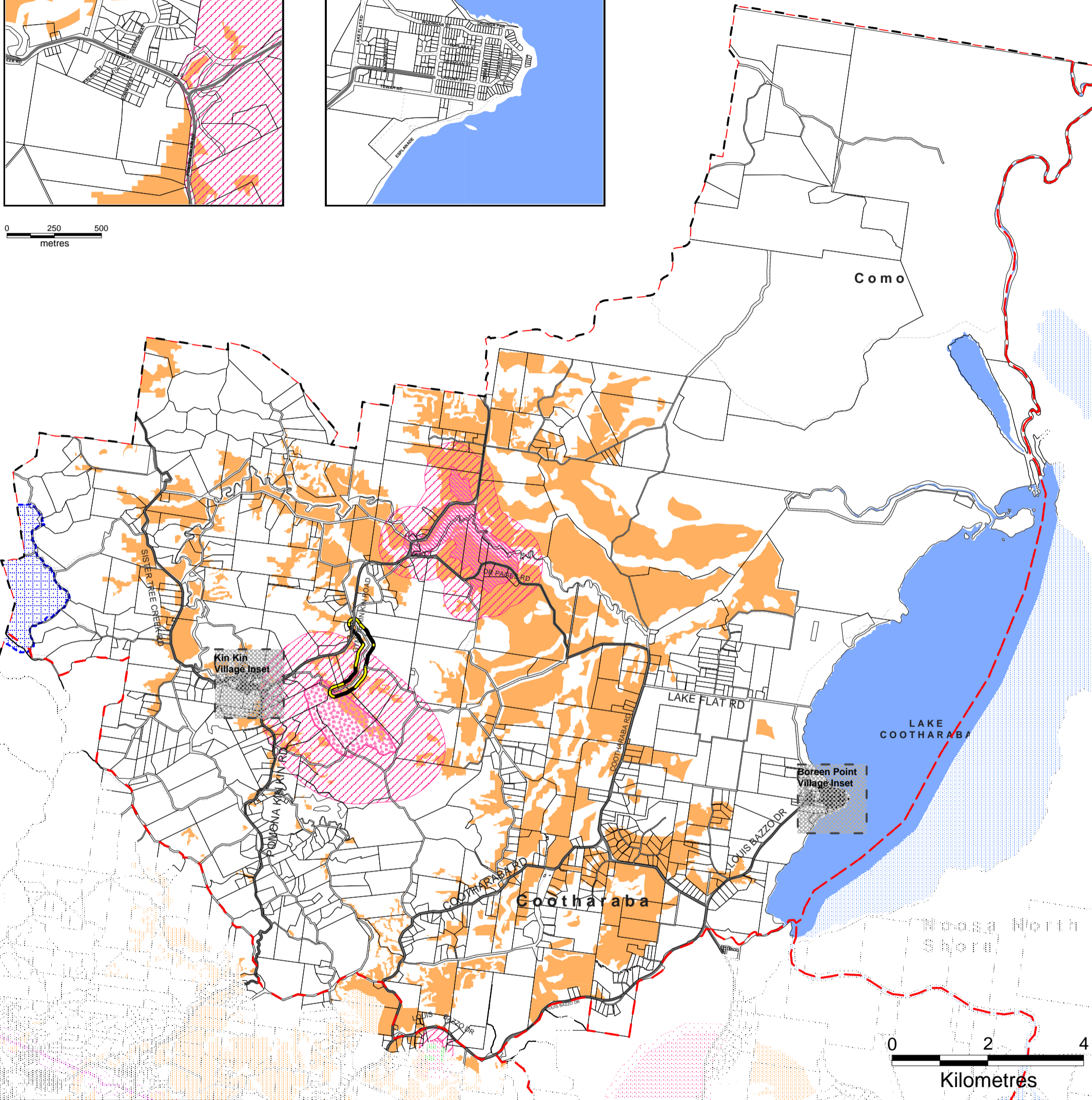
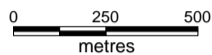
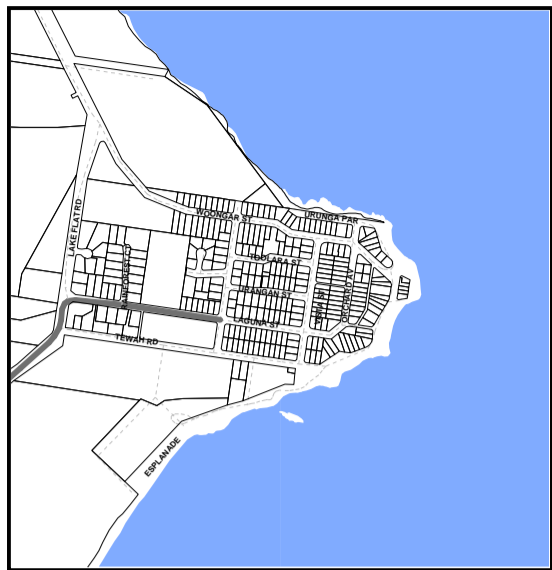
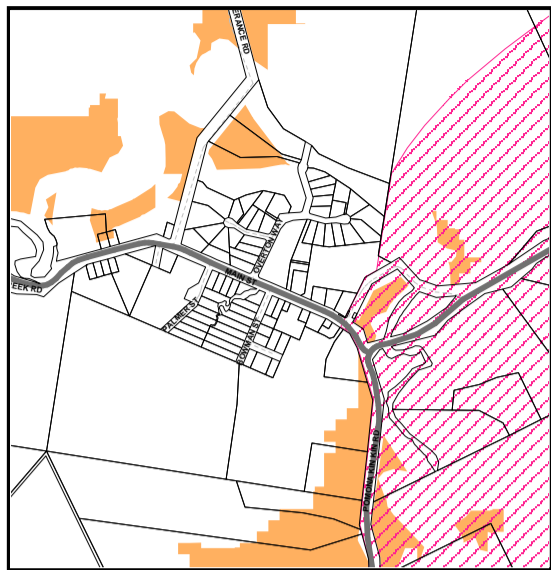


Kin Kin Village Inset

Boreen Point Village Inset



Boreen Point, Kin Kin & Cootharaba Natural Resources Overlay (Map OM1.5)



Printed: October 2016
Version: Amendments Commenced October 2016
This map, is a reproduction from Council's GIS, has a scale of accuracy of 1:25 000, although data on which it is based was gathered at mostly finer scales. Precise boundaries may need to be defined by site survey. Council Copyright Reserved.

Premises within 500m of land included within the Agricultural Land Conservation Area may trigger assessment under the Natural Resources Overlay Code. Refer to Assessment Tables in Part 13

Workspace Location: N:\GIS\Projects\131023_The_Noosa_Plan\Maps\Data\Approved_Amendments_2016\Maps\NRResources\NRResources_BPKK.wor

- Locality Boundaries
- Noosa Shire Boundary
- Railway Line
- Major Road Network
- Property Boundaries
- Major Waterbodies
- Water Supply Catchment
- Coastal Protection Area
- Agricultural Land Conservation Area (ALCA)
- Inset
- Gas Pipeline Easement & Buffer
- Haulage Route Separation Area
- Mining Leases
- Key Resource/Processing Area
- Local Resource/Processing Area
- Resource/Processing Separation Area