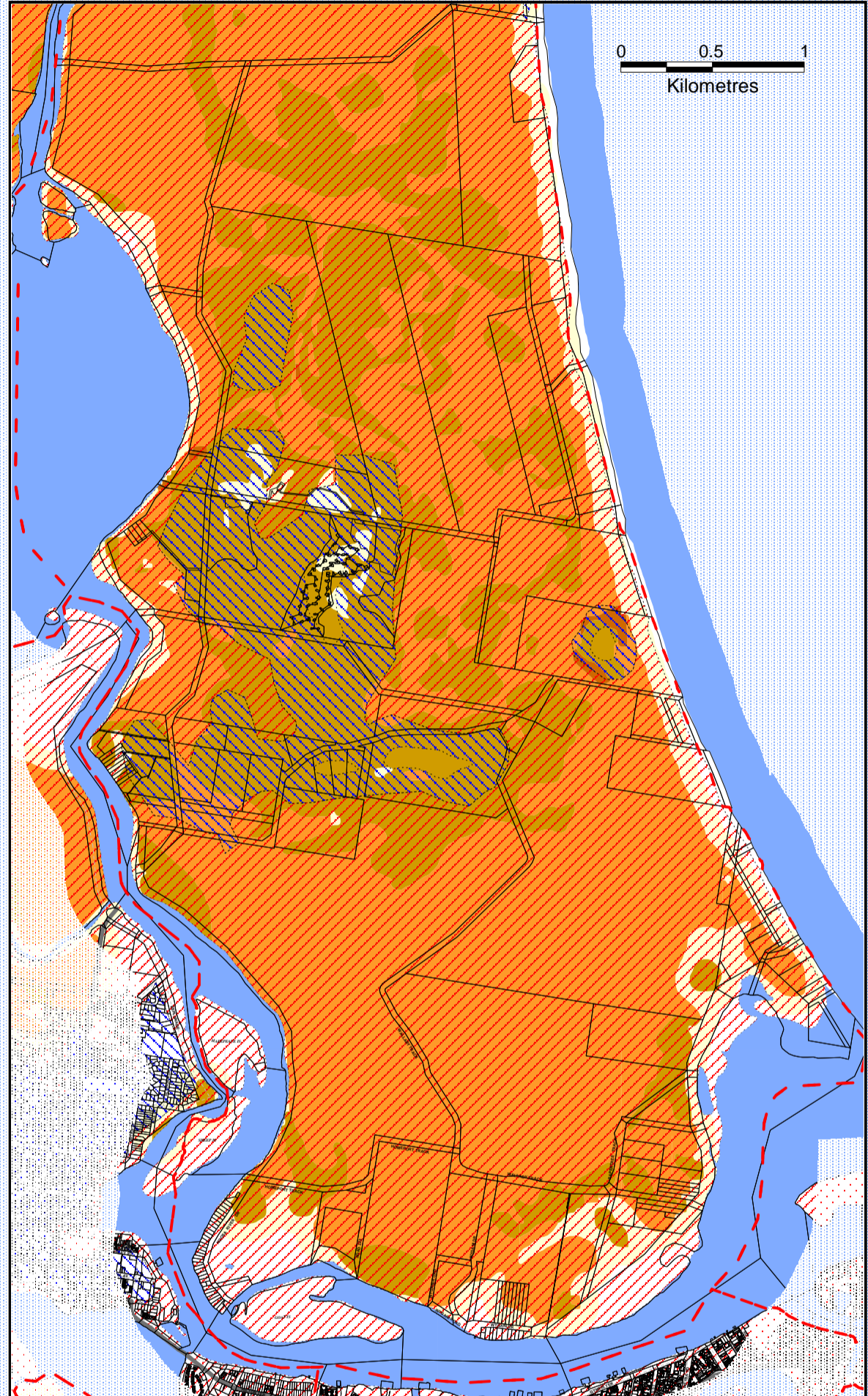
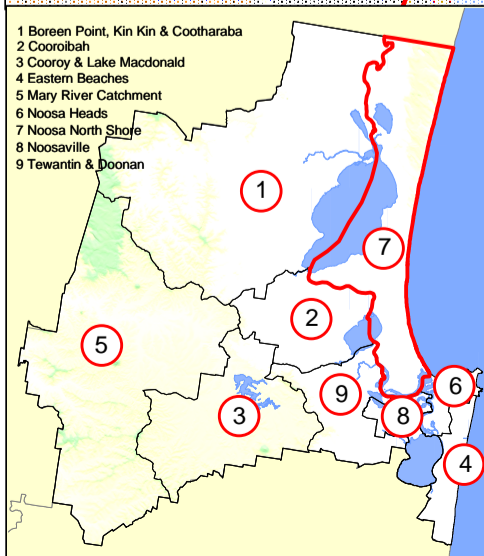
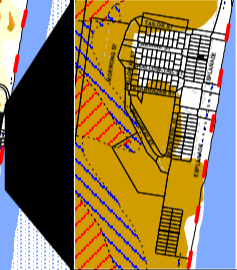


Lower Noosa North Shore Inset



Teewah Inset Scale 1cm : 300m



Noosa North Shore Natural Hazard: Bushfire & Acid Sulfate Soils Overlay (Map OM7.4)



Printed: 3 July 2017
Version: Alignment Amendment Commenced 3 July 2017

This map is a reproduction from Council's GIS, has a scale of accuracy of 1:25 000, although data on which it is based was gathered at mostly finer scales. Precise boundaries may need to be defined by site survey. Council Copyright Reserved.

This map identifies areas that may experience identified hazards. It does not mean that the area indicated will be affected by the particular hazard shown.
A detailed assessment may be required as part of the development assessment process to determine whether the area is affected or not.

- - - Locality Boundaries
- - - Noosa Shire Boundary
- ▭ Cadastral Boundaries
- ▭ Major Water Bodies
- +—+—+ Railway Line
- Major Road Network
- ▭ Inset

- Bushfire Hazard Area**
- Very High Potential Bushfire Intensity
 - High Potential Bushfire Intensity
 - Medium Potential Bushfire Intensity
 - Potential Impact Buffer
- ▭ High Potential Acid Sulfate Area 0-5m AHD
▭ Low Potential Acid Sulfate Area 5-20m AHD