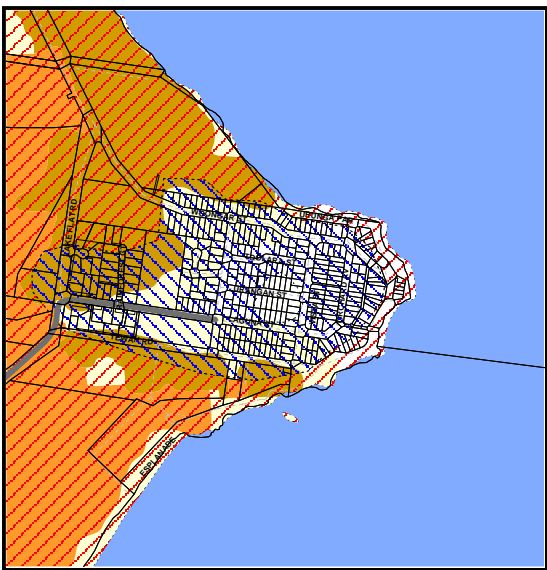


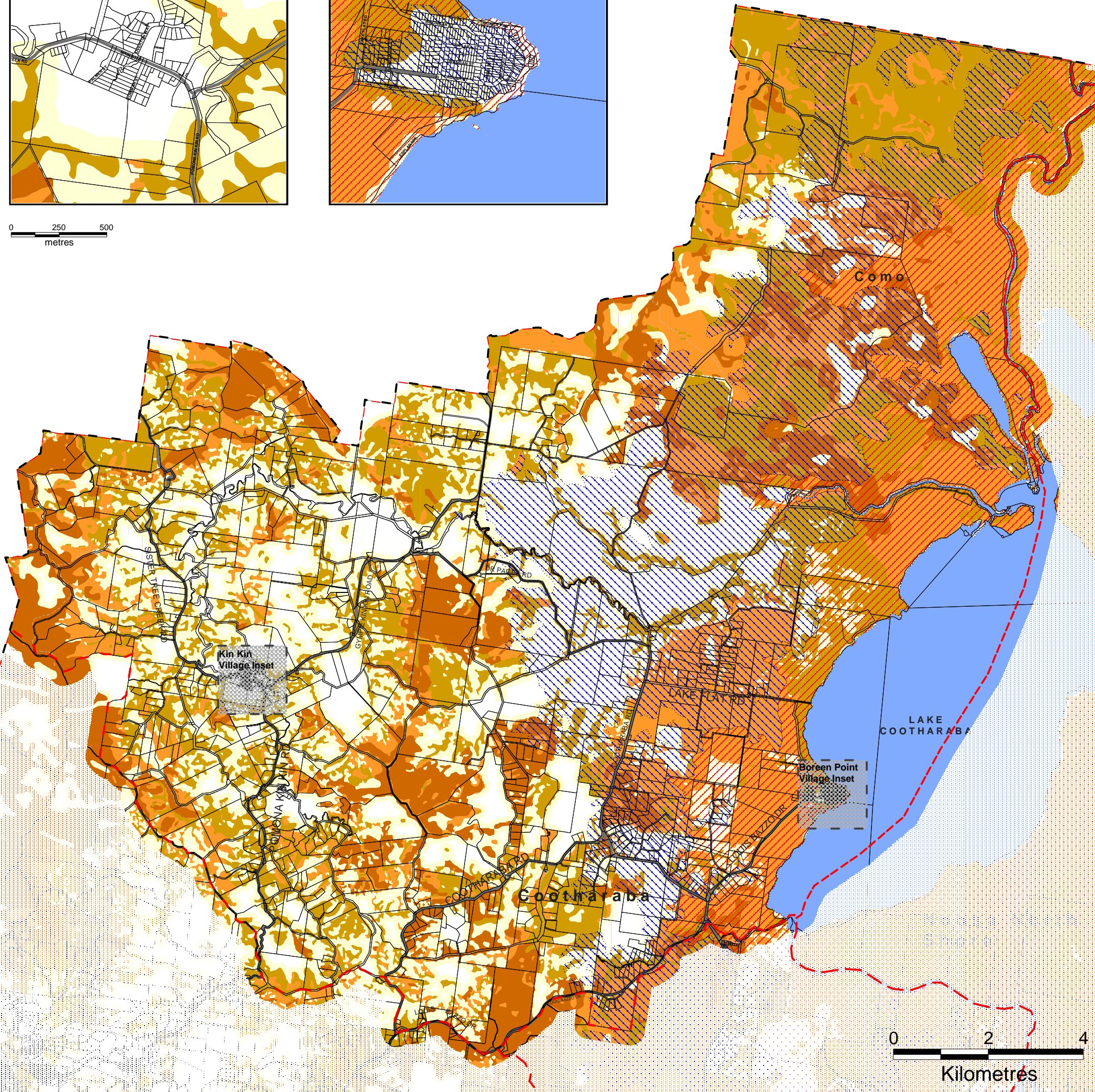
Kin Kin Village Inset



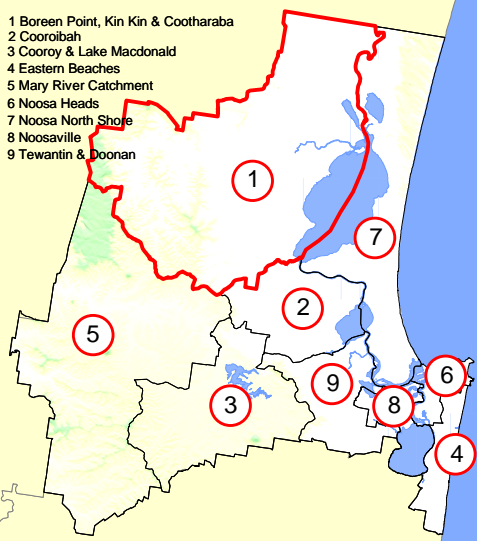
Boreen Point Village Inset



0 250 500 metres



0 2 4 Kilometres



- 1 Boreen Point, Kin Kin & Cootharaba
- 2 Cooribah
- 3 Cooroy & Lake Macdonald
- 4 Eastern Beaches
- 5 Mary River Catchment
- 6 Noosa Heads
- 7 Noosa North Shore
- 8 Noosaville
- 9 Tewantin & Doonan

Boreen Point, Kin Kin & Cootharaba Natural Hazard: Bushfire & Acid Sulfate Soils Overlay (Map OM1.4)



Printed: 3 July 2017
Version: Alignment Amendment Commenced 3 July 2017

This map, is a reproduction from Council's GIS, has a scale of accuracy of 1:25 000, although data on which it is based was gathered at mostly finer scales. Precise boundaries may need to be defined by site survey.
Council Copyright Reserved.

This map identifies areas that may experience identified hazards. It does not mean that the area indicated will be affected by the particular hazard shown.

A detailed assessment may be required as part of the development assessment process to determine whether the area is affected or not.

- - - Locality Boundaries
 - - - Noosa Shire Boundary
 - - - Cadastral Boundaries
 - - - Railway Line
 - - - Major Water Bodies
 - - - Major Road Network
 - - - Inset
- Bushfire Hazard Area**
- Very High Potential Bushfire Intensity
 - High Potential Bushfire Intensity
 - Medium Potential Bushfire Intensity
 - Potential Impact Buffer
- High Potential Acid Sulfate Area 0-5m AHD**
- Low Potential Acid Sulfate Area 5-20m AHD**