

## Noosa Plan LGIP-PFTI Stormwater Key Map - Service Catchments



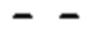




0 2 4  
Kilometres

Scale 1cm : 1.3km

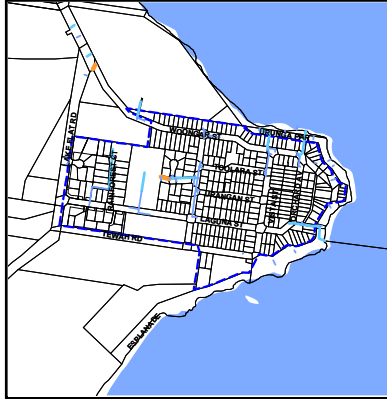
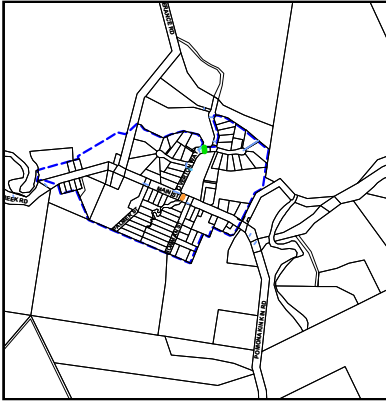
The map is a reproduction from Council's GIS, with a scale of accuracy of 1:25 000. Data on which it is based was gathered at mostly finer scales. Precise boundaries may need to be defined by site survey. Council Copyright Reserved.

Workspace Location: StrategyMap.wor

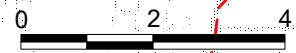
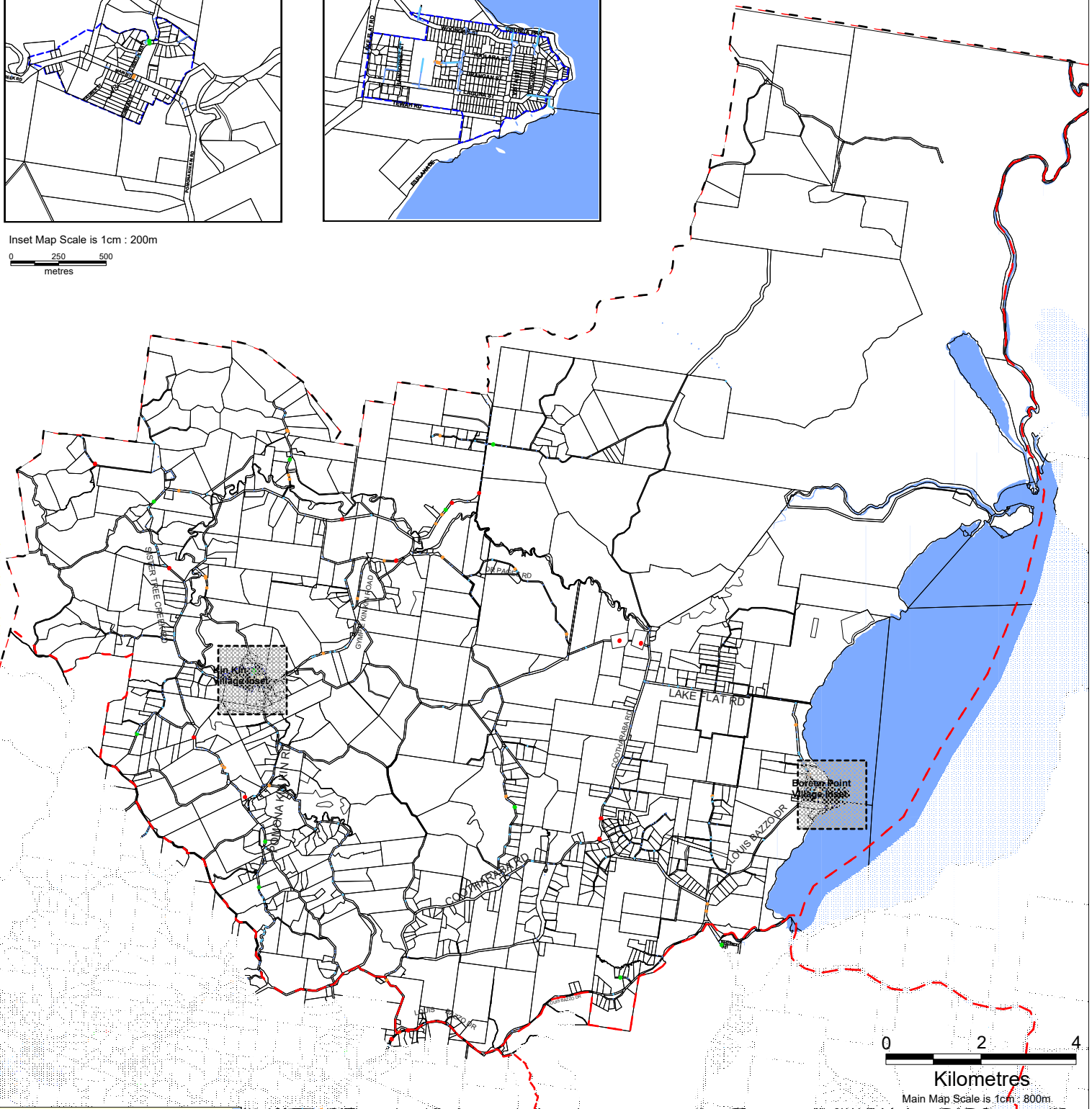
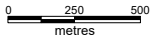
-  Streams/Rivers
-  Service Catchments (PIA boundary)
-  Noosa Shire Boundaries
-  Waterbodies
-  Locality Boundaries

Kin Kin Village Inset

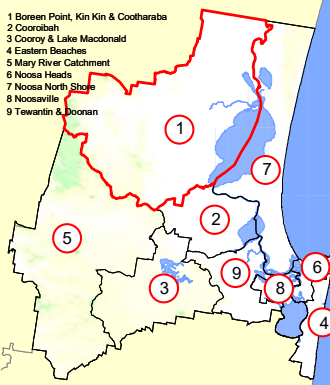
Boreen Point Village Inset



Inset Map Scale is 1cm : 200m



Main Map Scale is 1cm : 800m



## Boreen Point, Kin Kin & Cootharaba LGIP-PFTI Stormwater Map 1



This map, is a reproduction from Council's GIS, has a scale of accuracy of 1:25 000, although data on which it is based was gathered at mostly finer scales. Precise boundaries may need to be defined by site survey. Council Copyright Reserved.

Workspace Location: (N:\07 Planning\Projects\_Done\_by\_All\_for\_LUDI\StormWater\WOR)

- Locality Boundaries
- Property Boundaries
- Major Water Bodies
- PIA Boundaries
- Catchments
- Railway Line
- Noosa Shire Boundary
- Inset

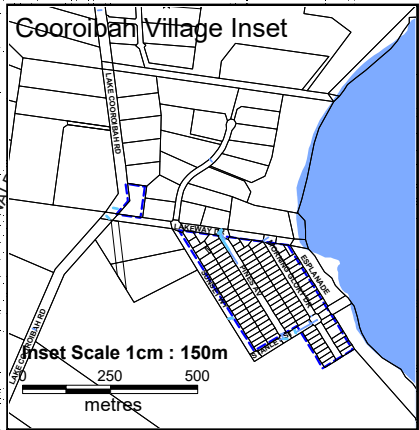
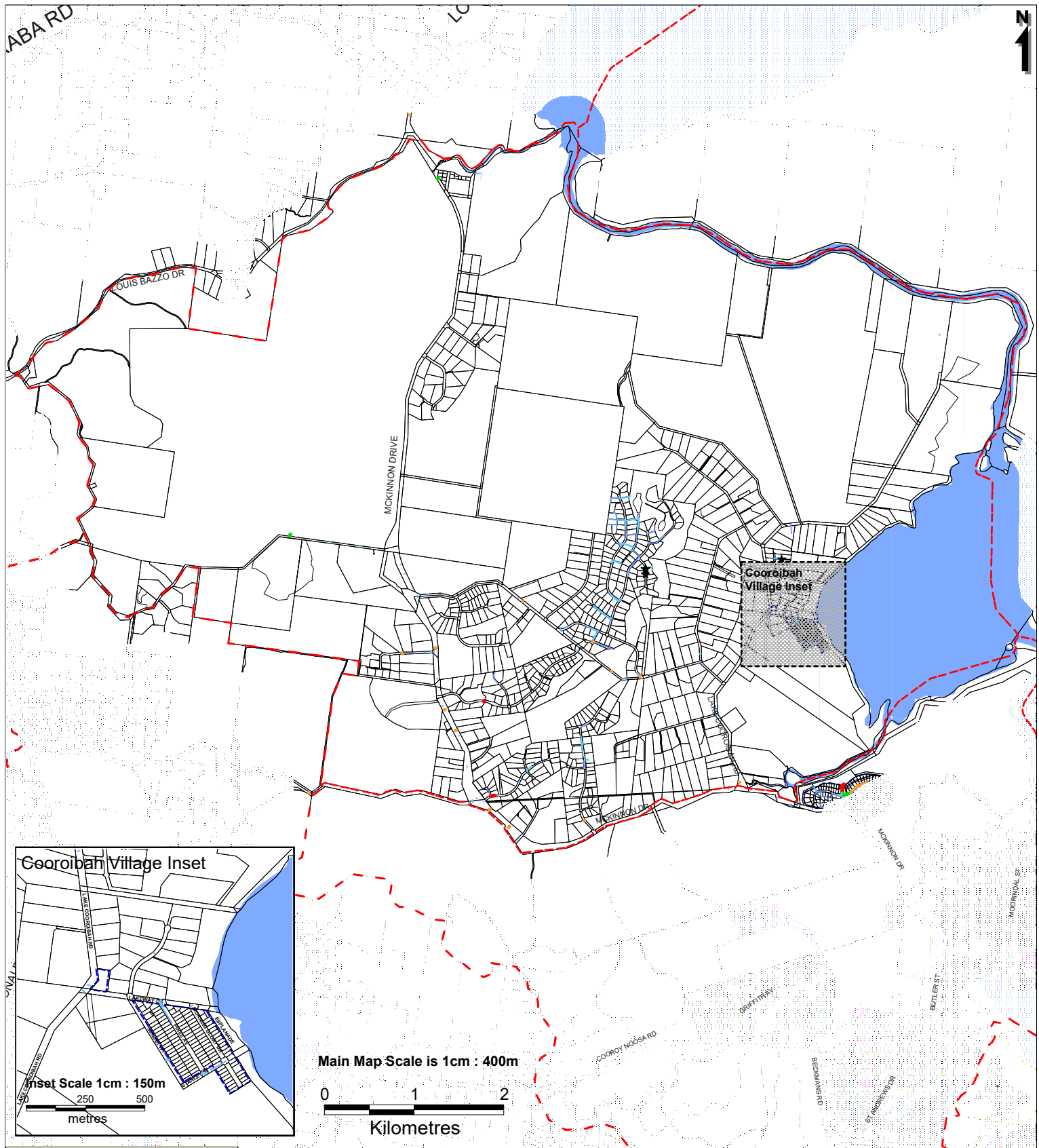
### Existing Trunk Infrastructure

- Existing Piped Infrastructure (Diameter in mm)
- 1,350 and greater
  - 925 to 1,349
  - 650 to 924
  - 450 to 649

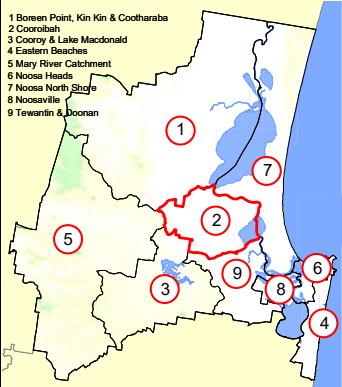
- Existing Gross Pollutant Trap
- Stormwater wetlands, bio-basins, sediment basins, swales and buffers

### Future Trunk Infrastructure

- Stormwater Improvement Projects



Main Map Scale is 1cm : 400m



### Cooribah LGIP-PFTI Stormwater Map 2



This map is a reproduction from Council's GIS, has a scale of accuracy of 1:25 000, although data on which it is based was gathered at mostly finer scales. Precise boundaries may need to be defined by site survey. Council Copyright Reserved.

Workspace Location: (N:\07 Planning\Projects\_Done\_by\_All\_for\_LUD\StormWater\WOR)

- Locality Boundaries
- Property Boundaries
- Major Water Bodies
- PIA Boundaries
- Catchments
- Railway Line
- Noosa Shire Boundary
- Inset

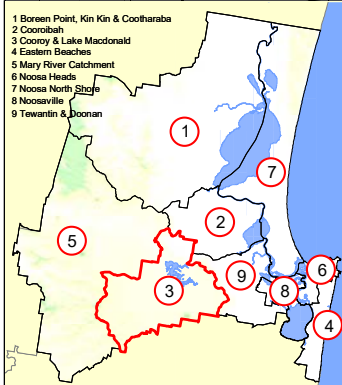
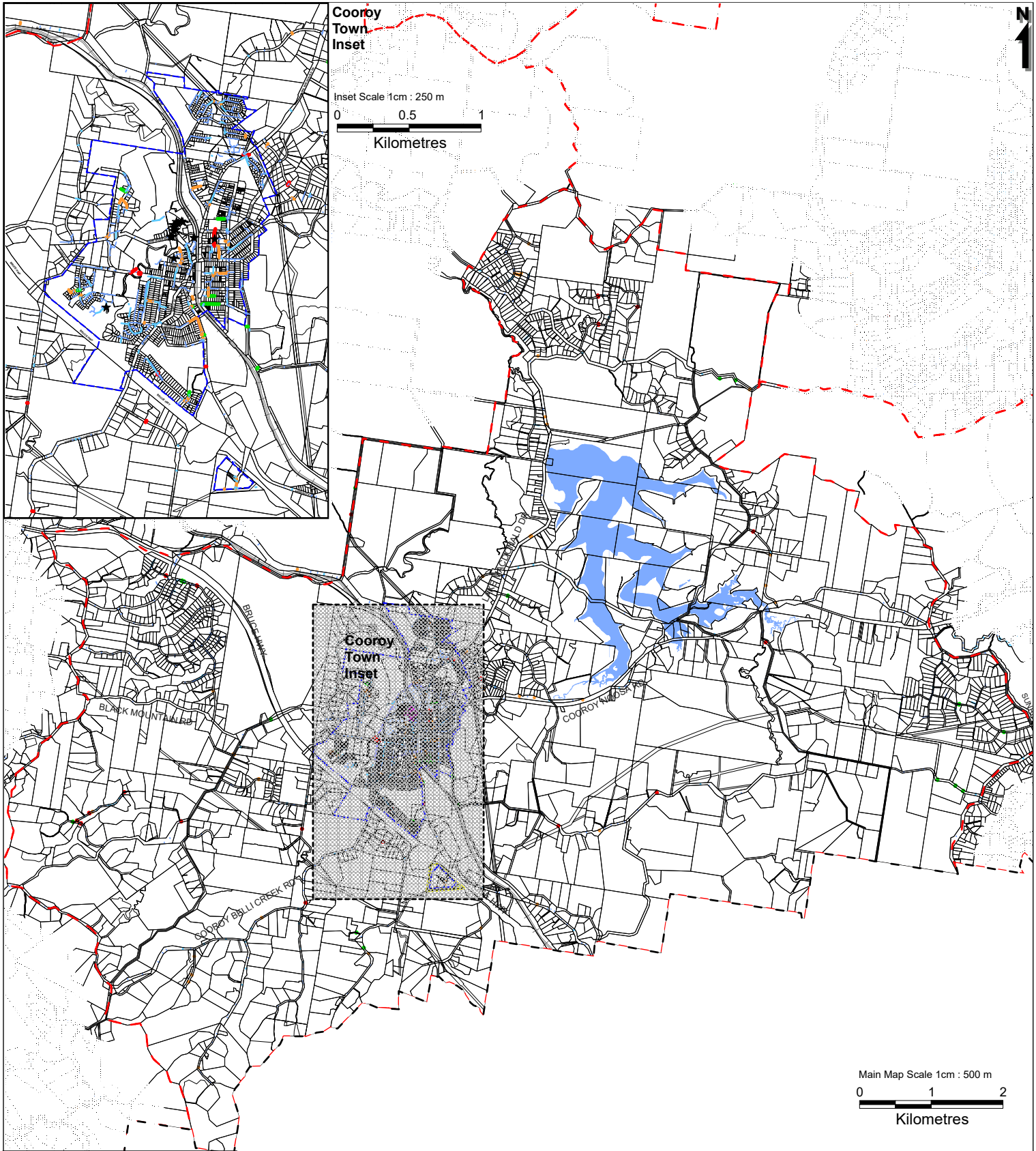
#### Existing Trunk Infrastructure

- Existing Piped Infrastructure (Diameter in mm)
- 1,350 and greater
  - 925 to 1,349
  - 650 to 924
  - 450 to 649

- Point
- Stormwater wetlands, bio-basins, sediment basins, swales and buffers

#### Future Trunk Infrastructure

- Stormwater Improvement Projects



### Cooroy & Lake Macdonald LGIP-PFTI Stormwater Map 3



This map is a reproduction from Council's GIS, has a scale of accuracy of 1:25,000, although data on which it is based was gathered at mostly finer scales. Precise boundaries may need to be defined by site survey.  
Council Copyright Reserved.

Workspace Location: (N:\07 Planning\Projects\_Done\_by\_All\_for\_LUDI\StormWater\WOR)

- Locality Boundaries
- Property Boundaries
- Major Water Bodies
- PIA Boundaries
- Railway Line
- Noosa Shire Boundary
- Inset

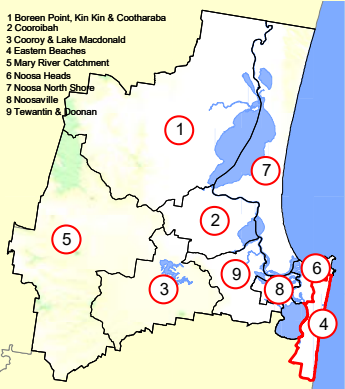
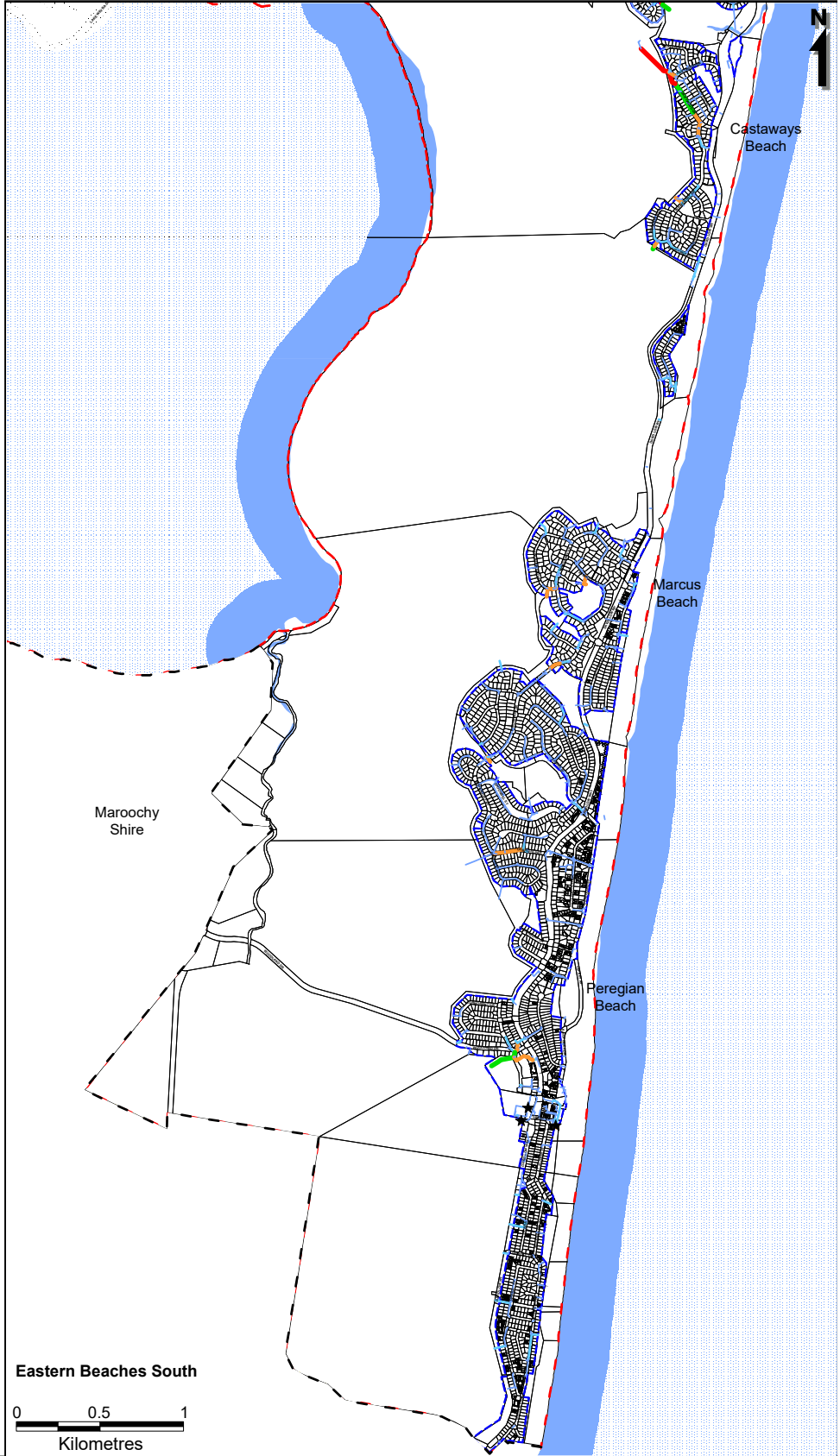
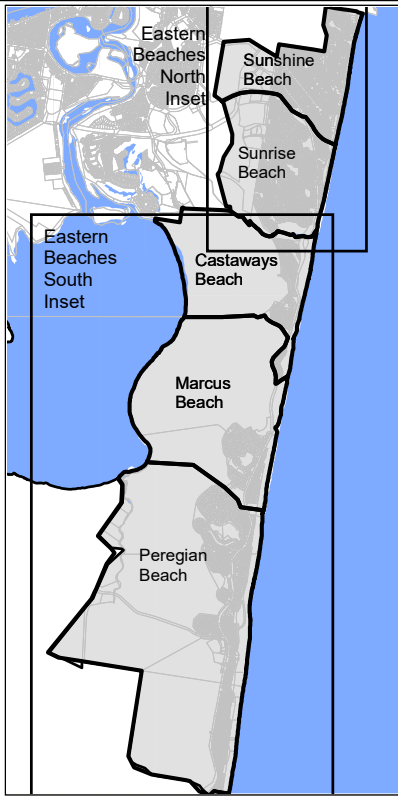
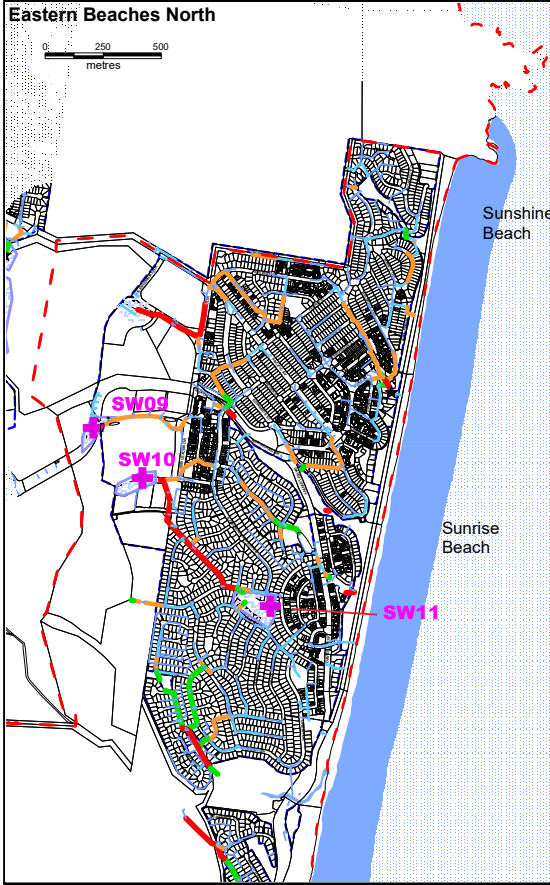
#### Existing Trunk Infrastructure

- Existing Piped Infrastructure (Diameter in mm)
- 1,350 and greater
  - 925 to 1,349
  - 650 to 924
  - 450 to 649

- ★ Existing Gross Pollutant Trap
- Stormwater wetlands, bio-basins, sediment basins, swales and buffers

#### Future Trunk Infrastructure

- + Stormwater Improvement Projects



## Eastern Beaches LGIP-PFTI Stormwater Map 4



This map is a reproduction from Council's GIS, has a scale of accuracy of 1:25 000, although data on which it is based was gathered at mostly finer scales. Precise boundaries may need to be defined by site survey. Council Copyright Reserved.

Workspace Location: (N:\07 Planning\Projects\_Done\_by\_Ali\_for\_LUD\StormWater\WOR)

- Locality Boundaries
- Property Boundaries
- Major Water Bodies
- PIA Boundaries
- Catchments

- Railway Line
- Noosa Shire Boundary
- Inset

### Existing Trunk Infrastructure

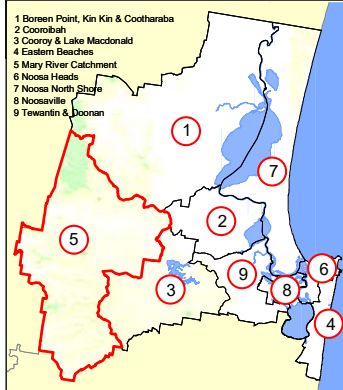
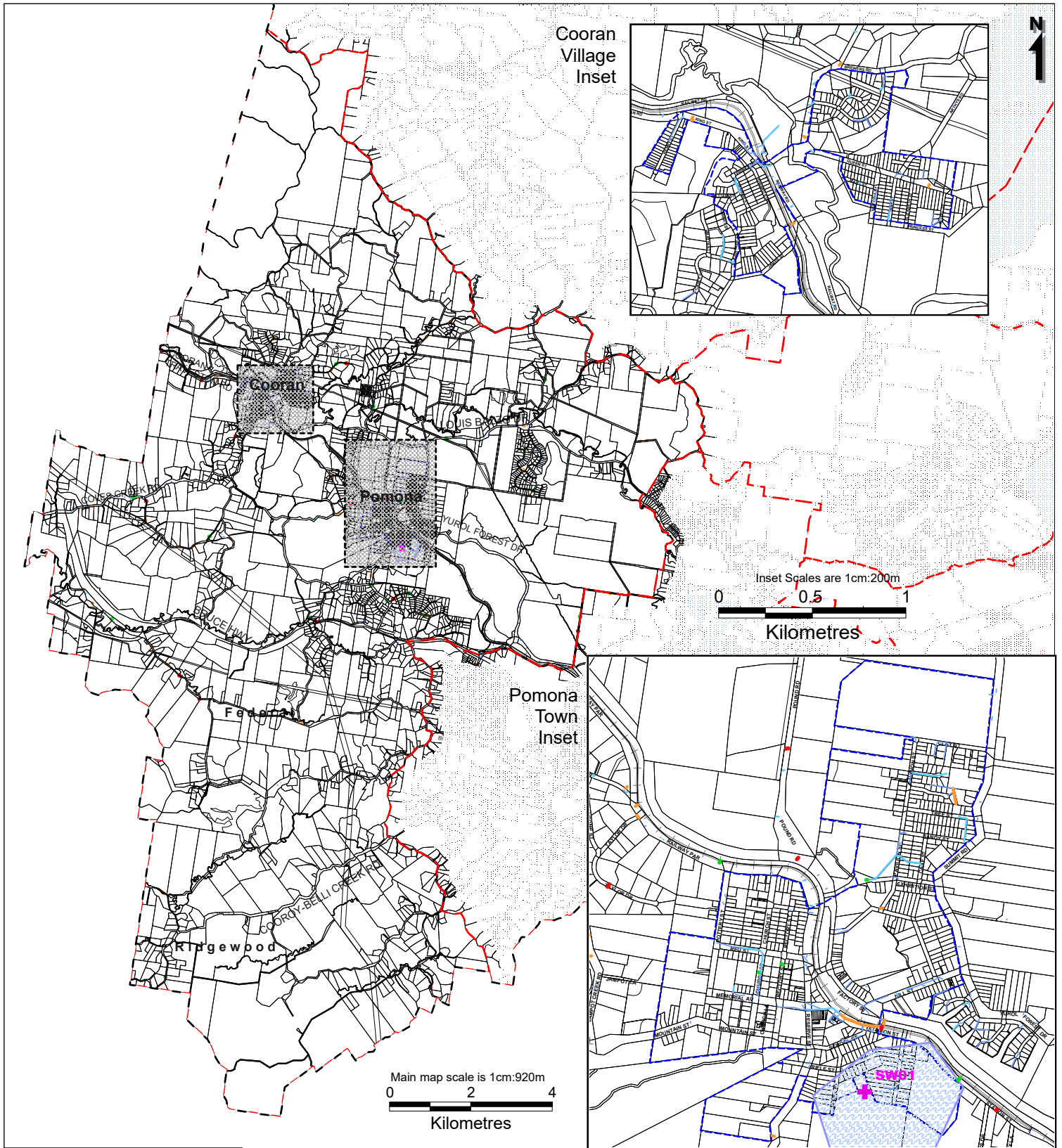
- Existing Piped Infrastructure (Diameter in mm)
- 1,350 and greater
  - 925 to 1,349
  - 650 to 924
  - 450 to 649

★ Point

Stormwater wetlands, bio-basins, sediment basins, swales and buffers

### Future Trunk Infrastructure

- Stormwater Improvement Projects



### Mary River Catchment LGIP-PFTI Stormwater Map 5



This map is a reproduction from Council's GIS, has a scale of accuracy of 1:25 000, although data on which it is based was gathered at mostly finer scales. Precise boundaries may need to be defined by site survey.  
Council Copyright Reserved.

Workspace Location: (N:\07 Planning\Projects\_Done\_by\_All\_for\_LUD\StormWater\WOR)

- - - Locality Boundaries
- Property Boundaries
- Major Water Bodies
- PIA Boundaries
- Catchments

- Railway Line
- Noosa Shire Boundary
- Inset

#### Existing Trunk Infrastructure

- Existing Piped Infrastructure (Diameter in mm)
- 1,350 to and greater
  - 925 to 1,349
  - 650 to 924
  - 450 to 649

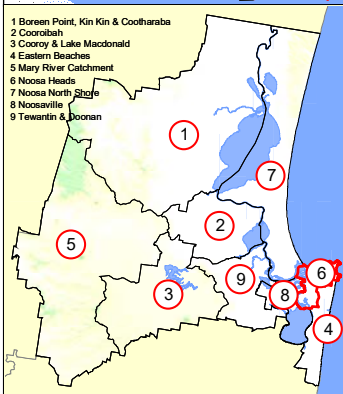
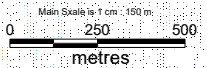
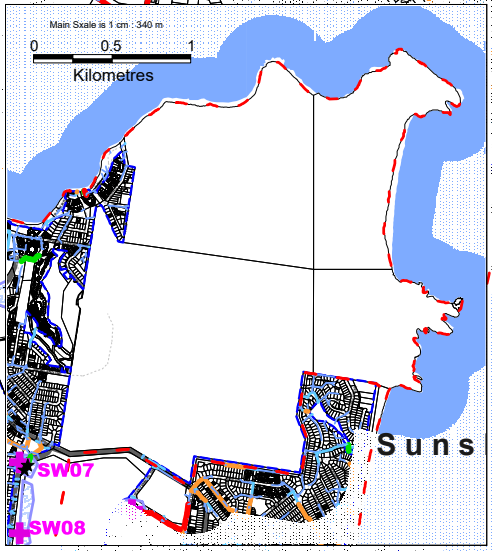
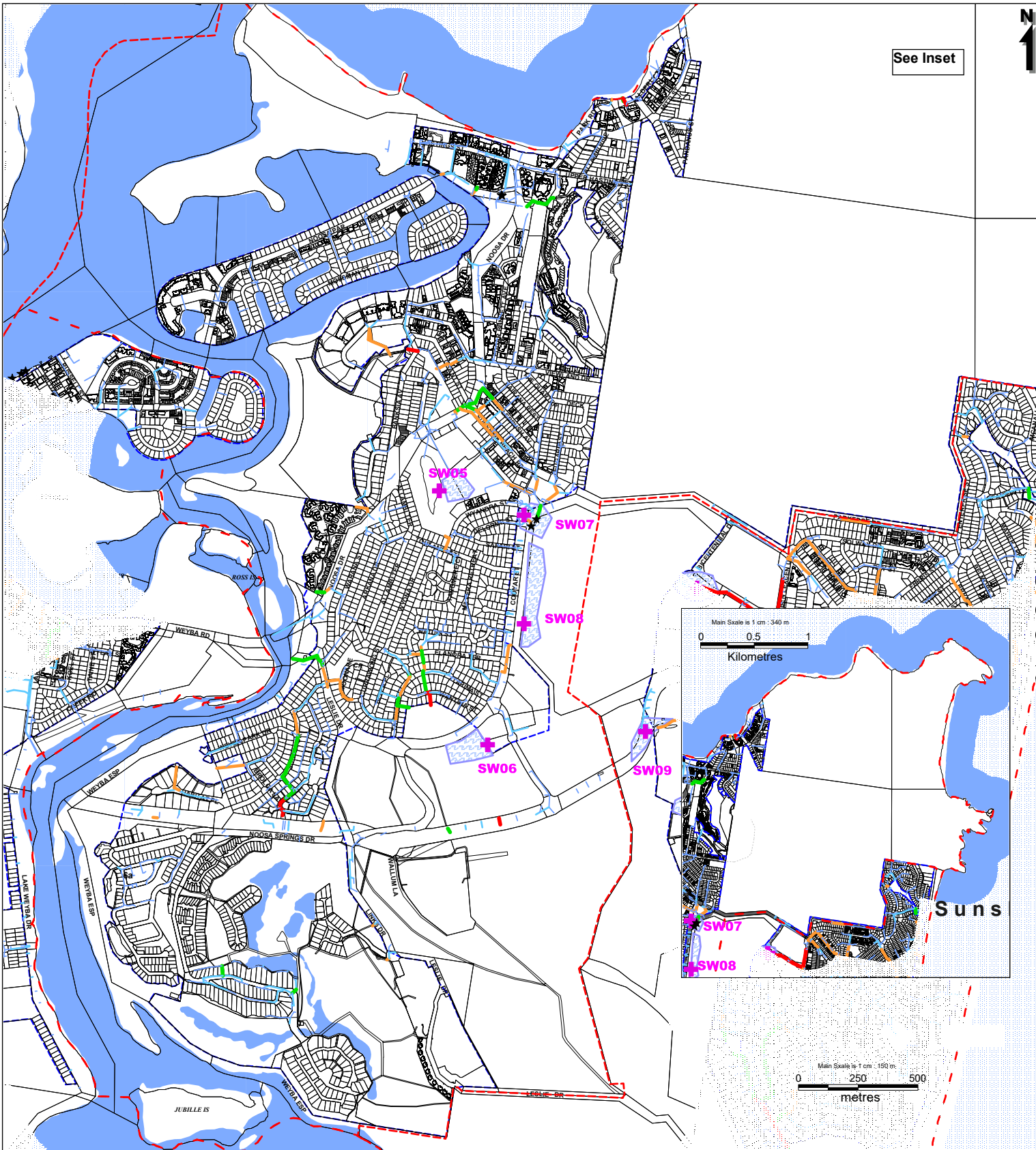
- ★ Existing Gross Pollutant Trap

- Stormwater wetlands, bio-basins, sediment basins, swales and buffers

#### Future Trunk Infrastructure

- Stormwater Improvement Projects

See Inset



### Noosa Heads LGIP-PFTI Stormwater Map 6

- Locality Boundaries
- Property Boundaries
- Major Water Bodies
- PIA Boundaries
- Catchments
- Railway Line
- Noosa Shire Boundary
- Point
- Inset

#### Existing Trunk Infrastructure

- Existing Piped Infrastructure (Diameter in mm)
- 1,350 and greater
  - 925 to 1,349
  - 650 to 924
  - 450 to 649

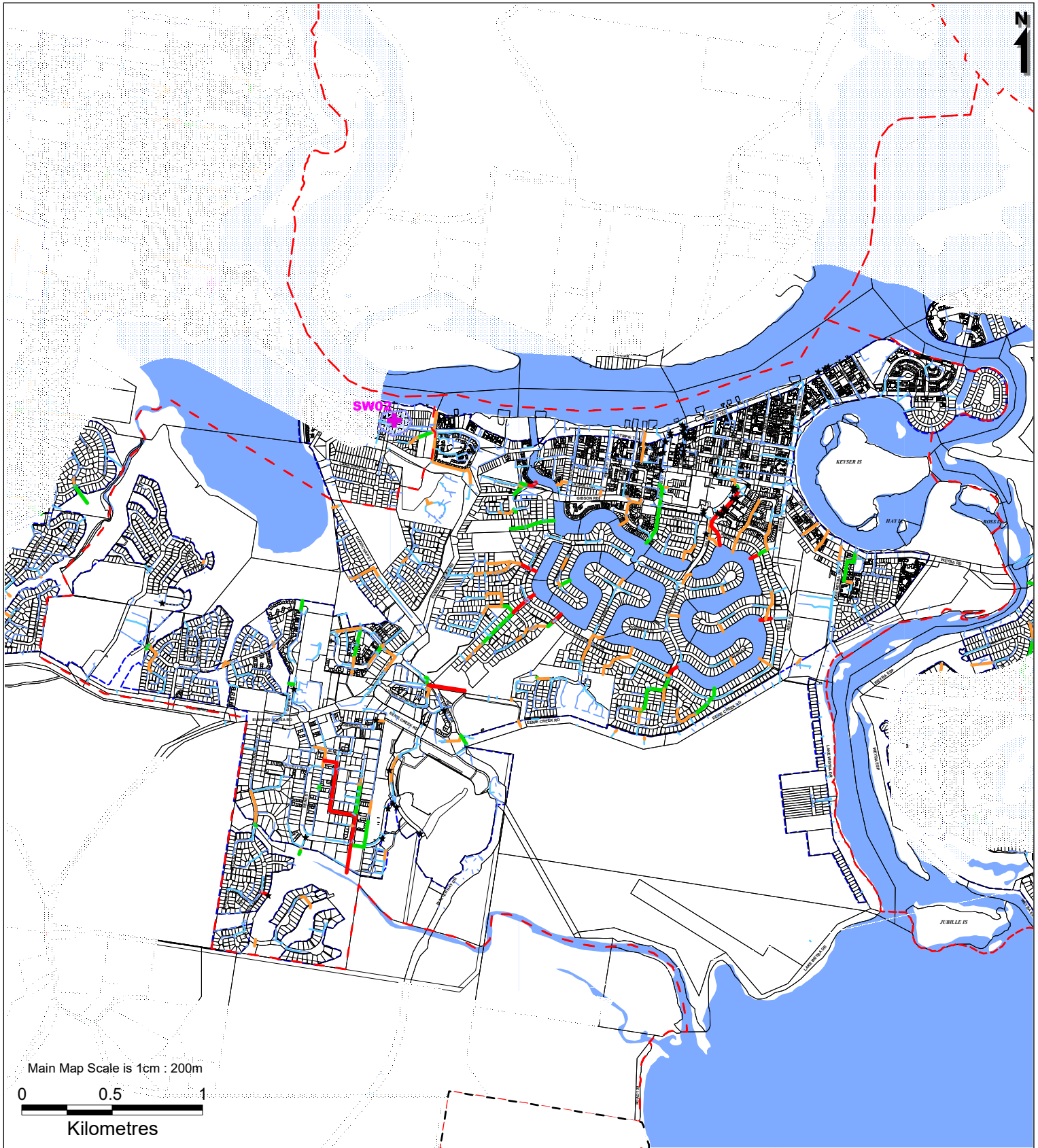
- Stormwater wetlands, bio-basins, sediment basins, swales and buffers

#### Future Trunk Infrastructure

- Stormwater Improvement Projects

This map is a reproduction from Council's GIS, has a scale of accuracy of 1:25 000, although data on which it is based was gathered at mostly finer scales. Precise boundaries may need to be defined by site survey. Council Copyright Reserved.

Workspace Location: (N:\07 Planning\Projects\_Done\_by\_All\_for\_LUD\StormWater\WOR)



Main Map Scale is 1cm : 200m

0 0.5 1

Kilometres

### Noosaville LGIP-PFTI Stormwater Map 8



This map is a reproduction from Council's GIS, has a scale of accuracy of 1:25 000, although data on which it is based was gathered at mostly finer scales. Precise boundaries may need to be defined by site survey. Council Copyright Reserved.

Workspace Location: (N:\07 Planning\Projects\_Done\_by\_All\_for\_LUD\StormWater\WOR)

- Locality Boundaries
- Property Boundaries
- Major Water Bodies
- PIA Boundaries
- Catchments
- Railway Line
- Noosa Shire Boundary

#### Existing Trunk Infrastructure

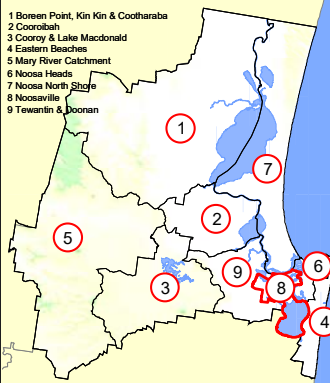
- Existing Piped Infrastructure (Diameter in mm)
- 1,350 and greater
  - 925 to 1,349
  - 650 to 924
  - 450 to 649

★ Point

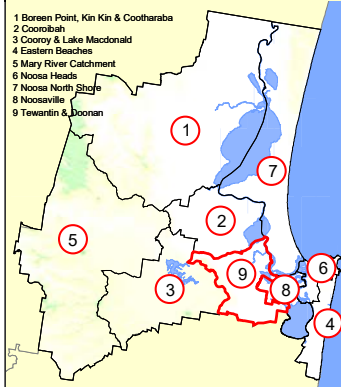
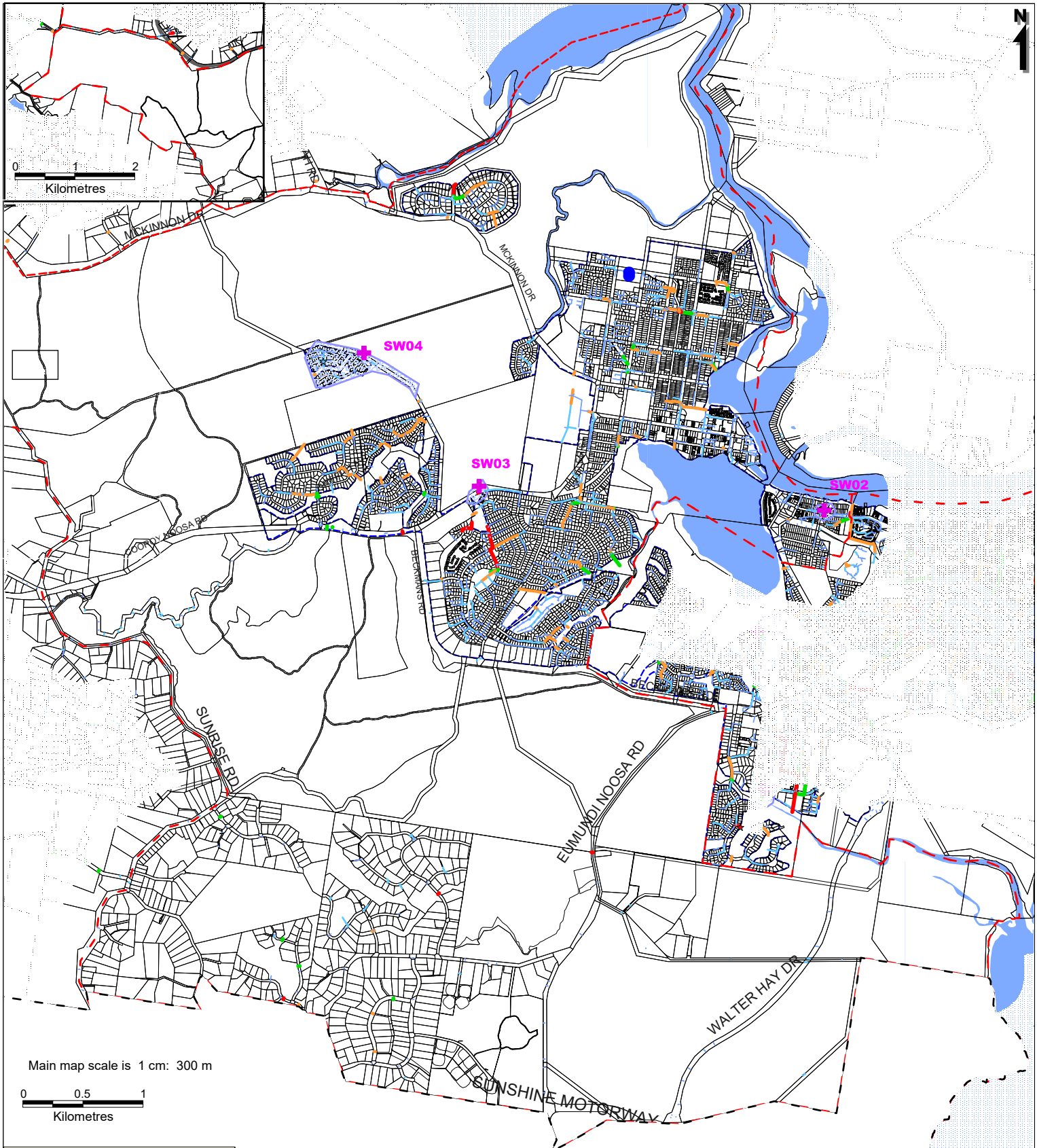
Stormwater wetlands, bio-basins, sediment basins, swales and buffers

#### Future Trunk Infrastructure

- ★ Stormwater Improvement Projects







**Tewantin & Doonan  
LGIP-PFTI Stormwater  
Map 9**



This map is a reproduction from Council's GIS, has a scale of accuracy of 1:25 000, although data on which it is based was gathered at mostly finer scales. Precise boundaries may need to be defined by site survey. Council Copyright Reserved.

Workspace Location: (N:\07 Planning\Projects\_Done\_by\_Ali\_for\_LUD\StormWater\WOR)

- Locality Boundaries
- Property Boundaries
- Major Water Bodies
- PIA Boundaries
- Catchments
- Railway Line
- Noosa Shire Boundary
- Inset

**Existing Trunk Infrastructure**

- Existing Piped Infrastructure (Diameter in mm)
  - 1,350 and greater
  - 925 to 1,349
  - 650 to 924
  - 450 to 649
- Existing Gross Pollutant Trap
- Stormwater wetlands, bio-basins, sediment basins, swales and buffers

**Future Trunk Infrastructure**

- Stormwater Improvement Projects