

Noosa Plan LGIP-PFTI Public Parks & LCF Key Map - Service Catchments




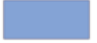



0 2 4
Kilometres

Scale 1cm : 1.3km

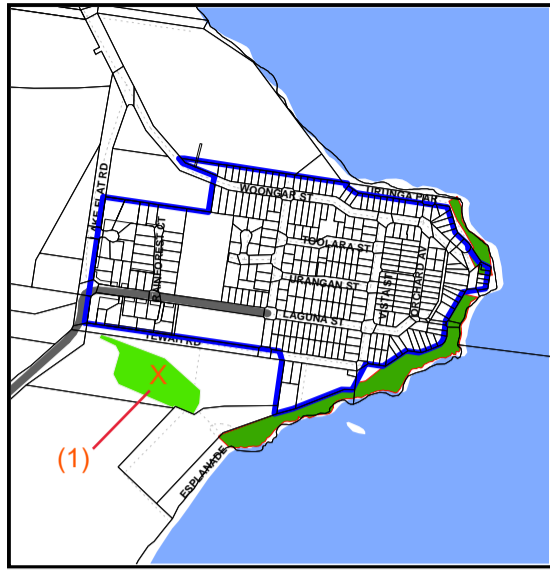
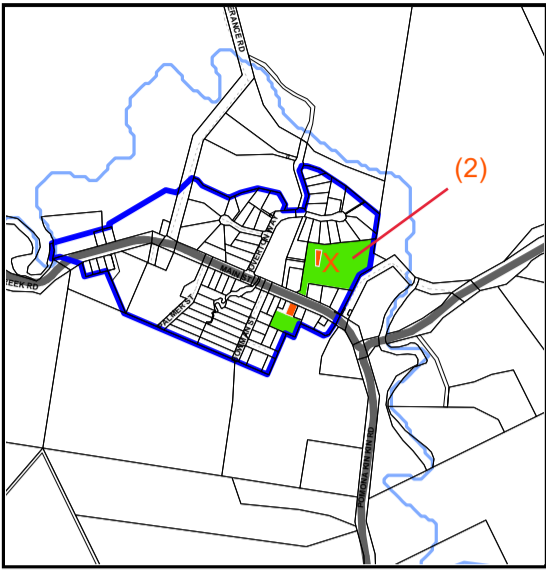
The map is a reproduction from Council's GIS, with a scale of accuracy of 1:25 000. Data on which it is based was gathered at mostly finer scales. Precise boundaries may need to be defined by site survey. Council Copyright Reserved.

Workspace Location: StrategyMap.wor

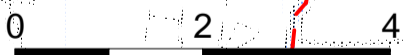
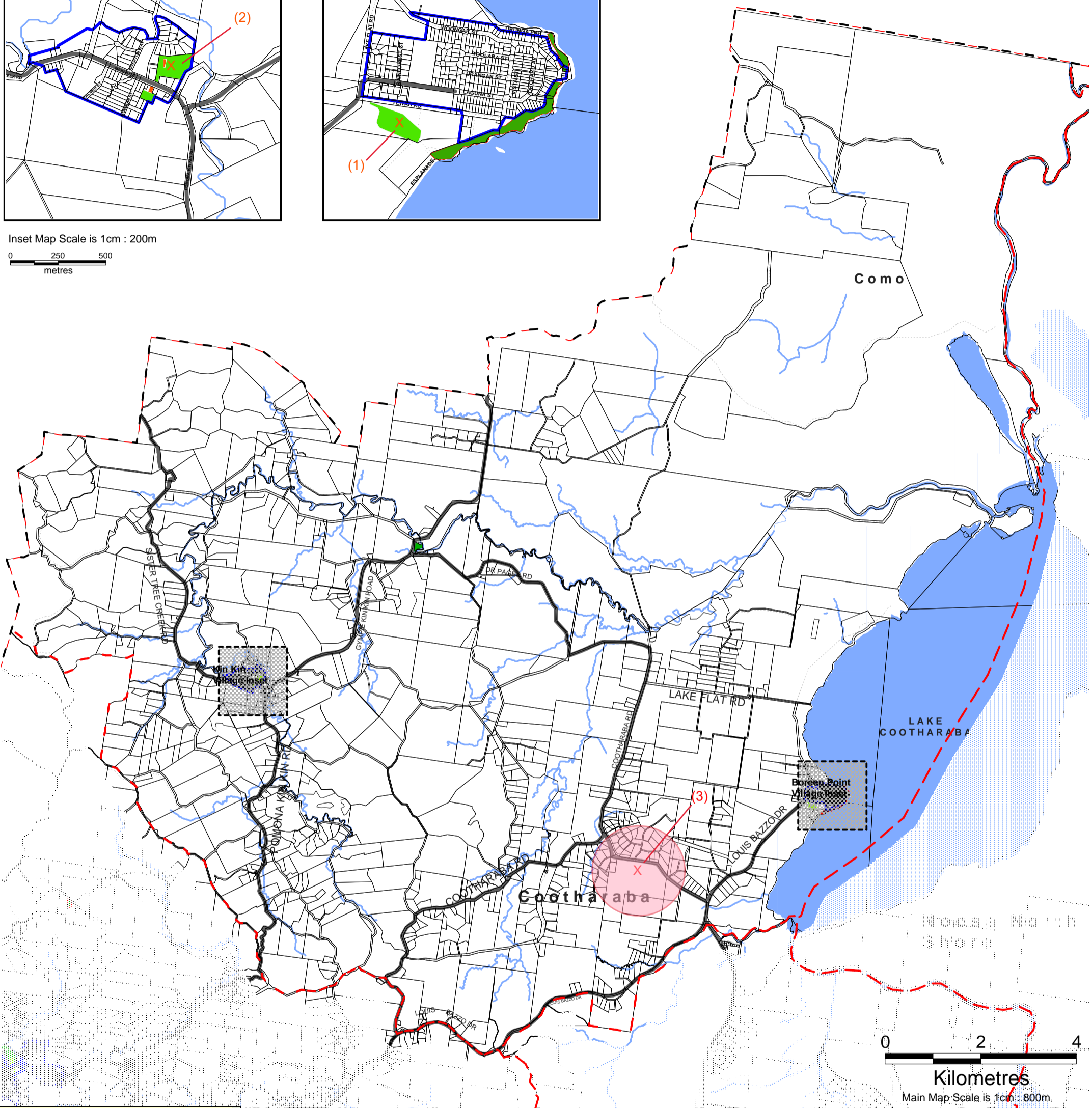
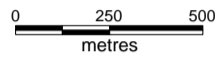
-  Streams/Rivers
-  PIA Boundaries
-  Noosa Shire Boundaries
-  Waterbodies
-  Service Catchments (Locality boundary)

Kin Kin Village Inset

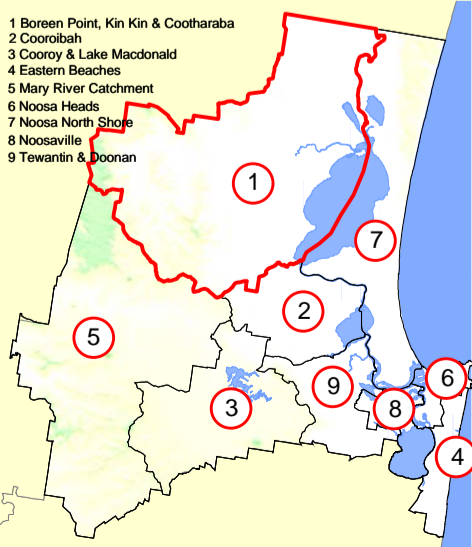
Boreen Point Village Inset



Inset Map Scale is 1cm : 200m



Main Map Scale is 1cm : 800m.



**Boreen Point, Kin Kin & Cootharaba
LGIP-PFTI Public Parks & LCF
Map 1**



This map is a reproduction from Council's GIS, has a scale of accuracy of 1:25 000, although data on which it is based was gathered at mostly finer scales. Precise boundaries may need to be defined by site survey. Council Copyright Reserved.

Workspace Location: N:\07 Planning\PIA Maps\SR1

- Property Boundaries
- Major Water Bodies
- PIA Boundaries

- Major Road Network
- Railway Line
- Noosa Shire Boundary
- Streams and Rivers
- Inset

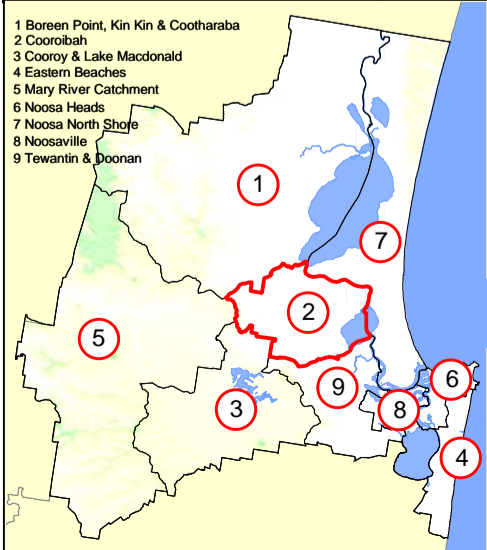
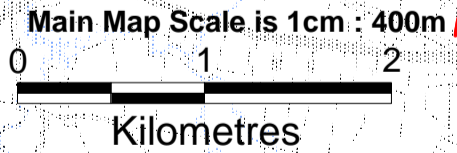
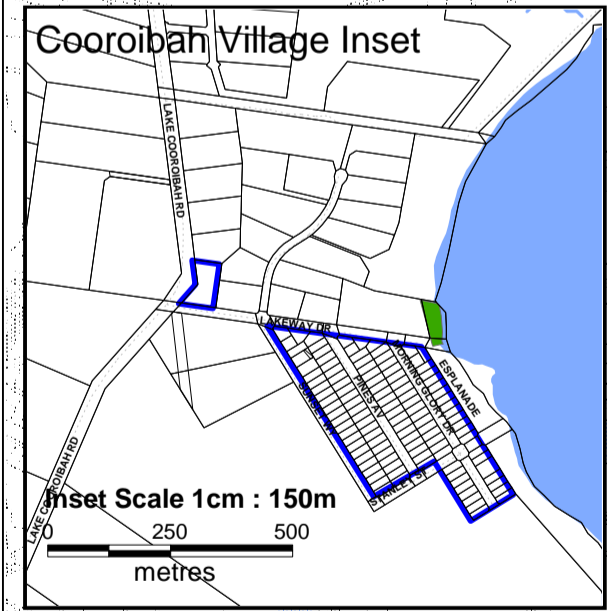
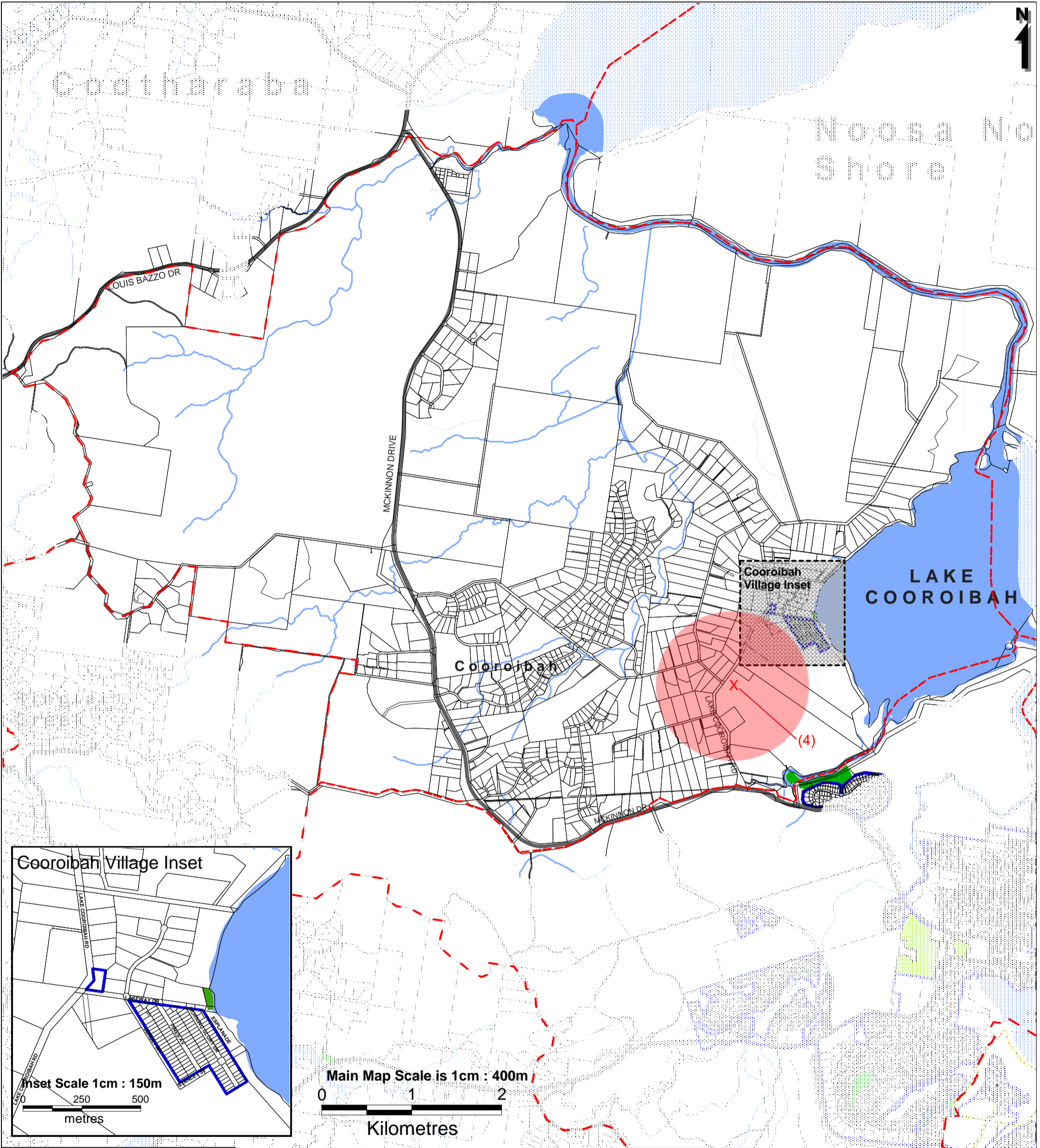
- Locality Boundaries (Catchments)

Existing Trunk Infrastructure

- Indoor Facility (District)
- Indoor Facility (Shire-Wide)
- Recreation Park (District)
- Recreation Park (Shire-Wide)
- Sport Park (District)
- Sport Park (Shire-Wide)

Future Trunk Infrastructure

- Item Reference



**Cooroibah
LGIP-PFTI Public Parks & LCF
Map 2**



This map, is a reproduction from Council's GIS, has a scale of accuracy of 1:25 000, although data on which it is based was gathered at mostly finer scales. Precise boundaries may need to be defined by site survey.
Council Copyright Reserved.

Workspace Location: N:\07 Planning\PIA Maps\SR1

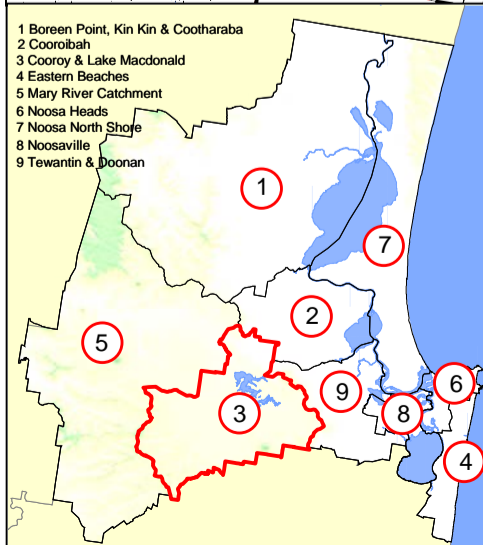
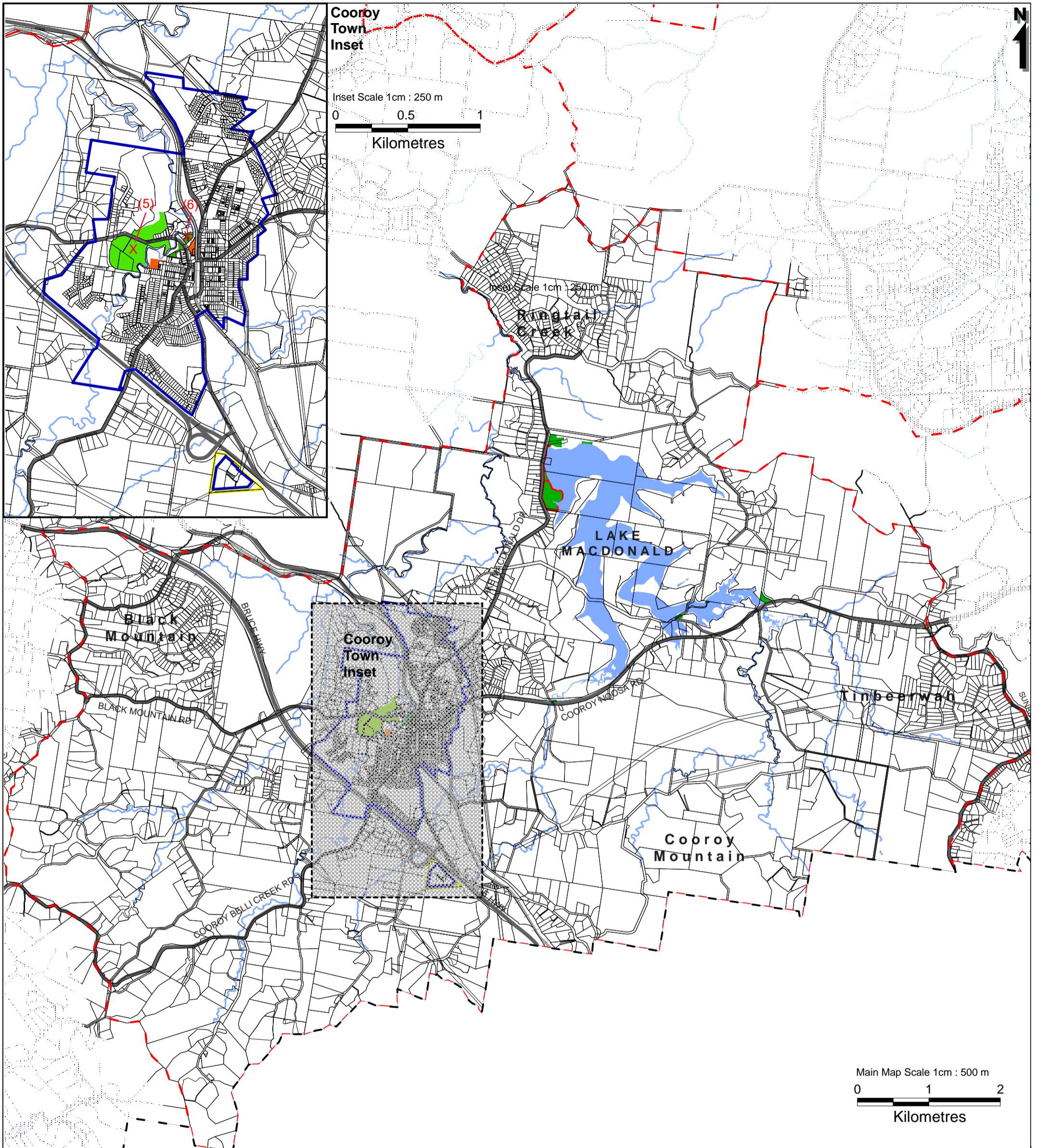
- Property Boundaries
- Major Water Bodies
- PIA Boundaries
- Locality Boundaries (Catchments)
- Major Road Network
- Railway Line
- Noosa Shire Boundary
- Streams and Rivers
- Inset

Existing Trunk Infrastructure

- Indoor Facility (District)
- Indoor Facility (Shire-Wide)
- Recreation Park (District)
- Recreation Park (Shire-Wide)
- Sport Park (District)
- Sport Park (Shire-Wide)

Future Trunk Infrastructure

X -- Item Reference



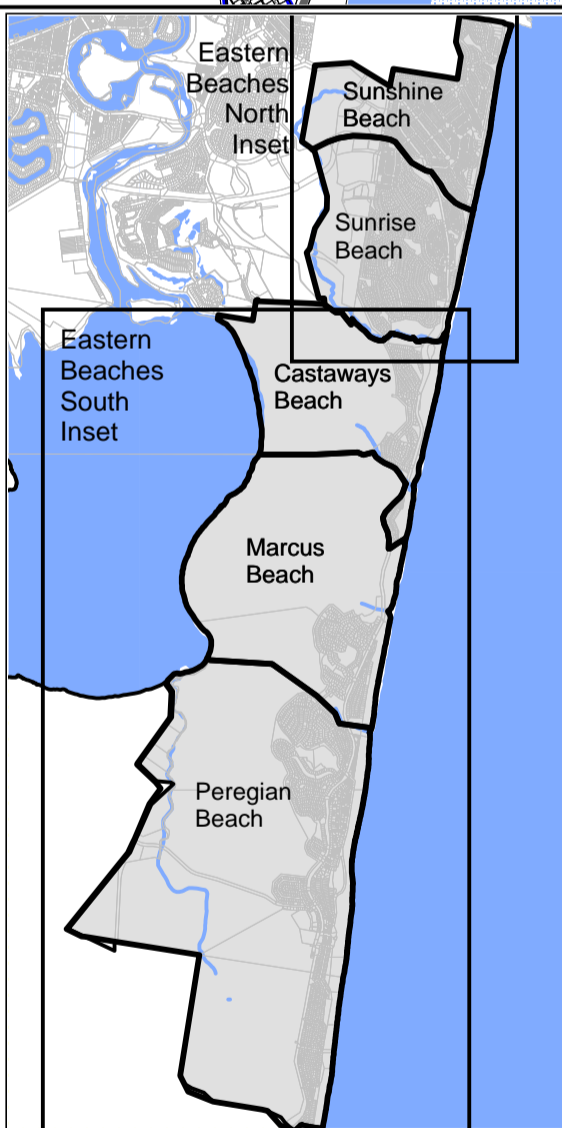
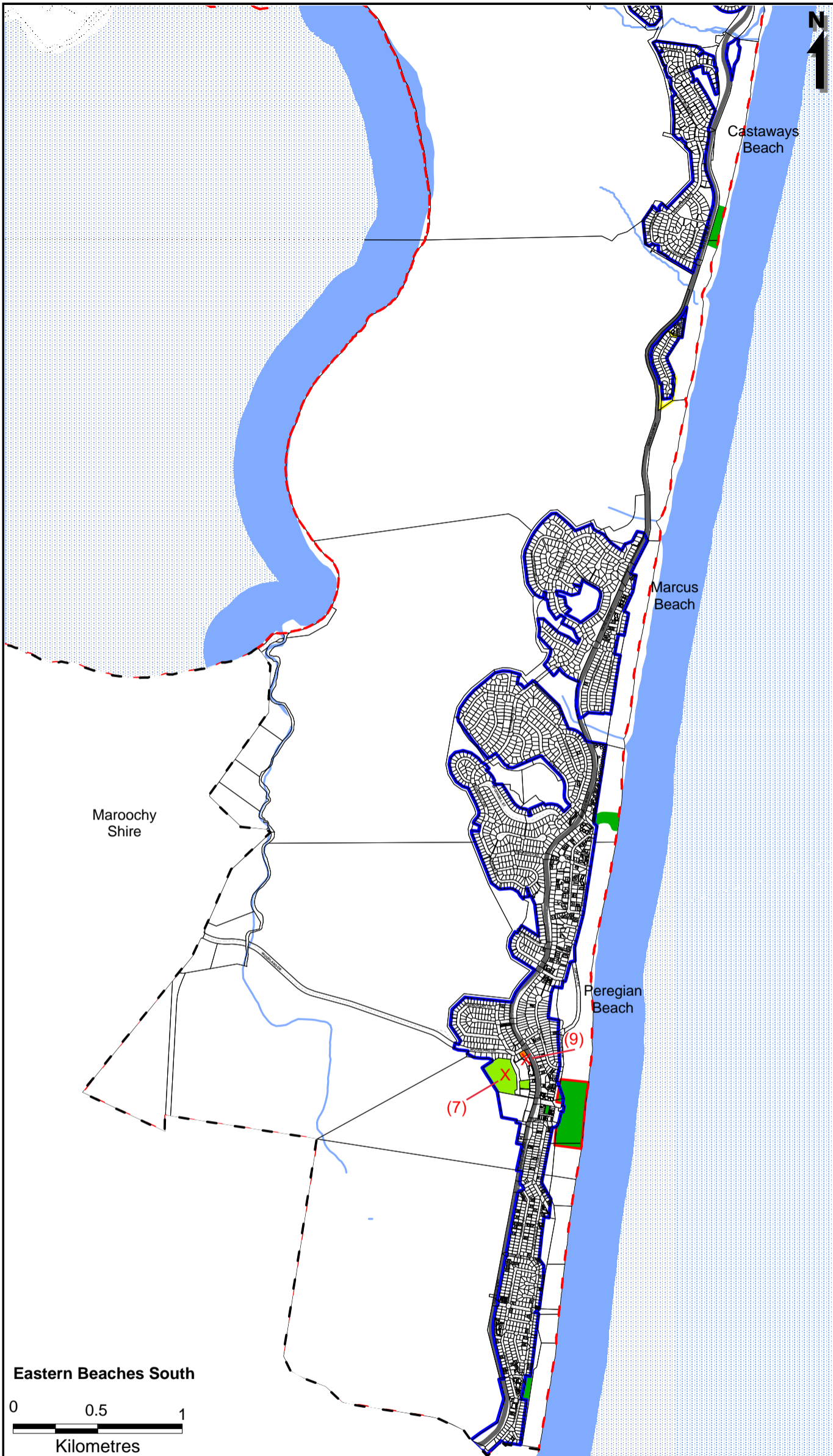
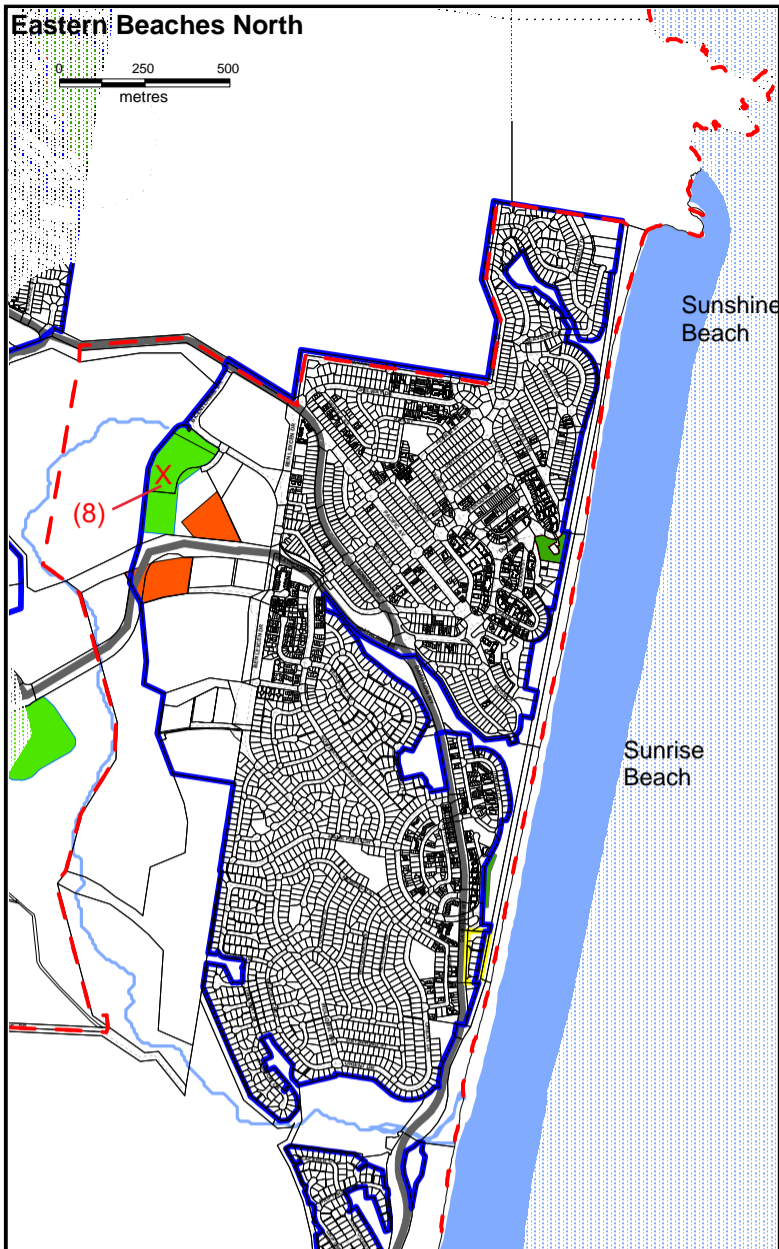
Cooroy & Lake Macdonald LGIP-PFTI Public Parks & LCF Map 3



This map, is a reproduction from Council's GIS, has a scale of accuracy of 1:25 000, although data on which it is based was gathered at mostly finer scales. Precise boundaries may need to be defined by site survey. Council Copyright Reserved.

Workspace Location: N:\07 Planning\PIA Maps\SRI

- | | | | | | |
|--|----------------------------------|--|----------------------|------------------------------------|------------------------------|
| | Property Boundaries | | Major Road Network | | Indoor Facility (District) |
| | Major Water Bodies | | Railway Line | | Indoor Facility (Shire-Wide) |
| | PIA Boundaries | | Noosa Shire Boundary | | Recreation Park (District) |
| | Locality Boundaries (Catchments) | | Streams and Rivers | | Recreation Park (Shire-Wide) |
| | | | Inset | | Sport Park (District) |
| | | | | | Sport Park (Shire-Wide) |
| | | | | Future Trunk Infrastructure | |
| | | | | | X - (Item Reference) |



Eastern Beaches LGIP-PFTI Public Parks & LCF Map 4

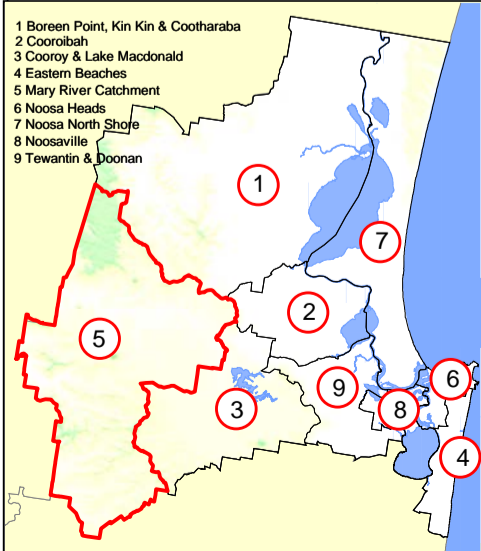
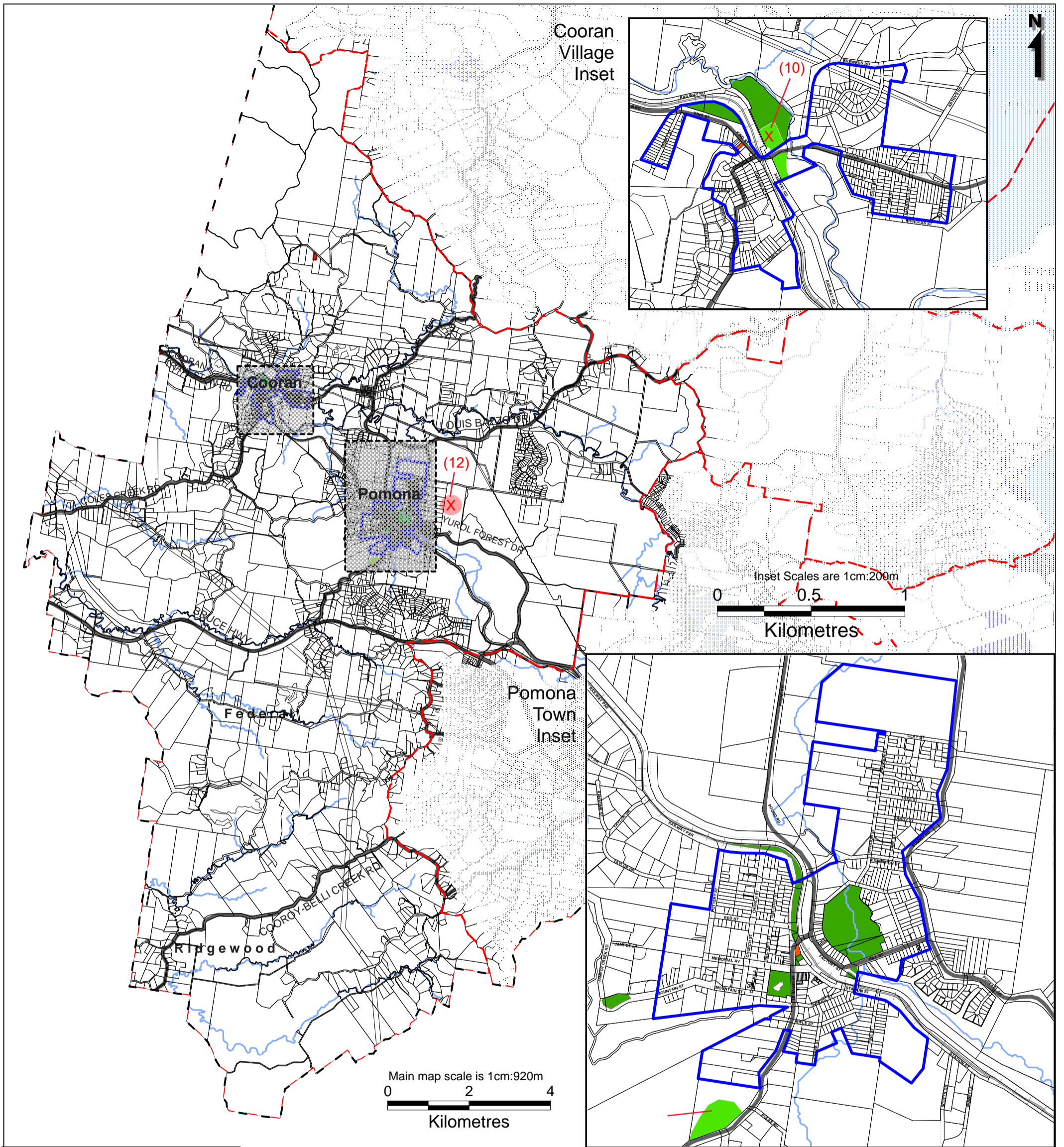


This map, is a reproduction from Council's GIS, has a scale of accuracy of 1:25 000, although data on which it is based was gathered at mostly finer scales. Precise boundaries may need to be defined by site survey. Council Copyright Reserved.

Workspace Location: N:\07 Planning\PIA Maps\SRI

- Property Boundaries
- Major Water Bodies
- PIA Boundaries
- Locality Boundaries (Catchments)
- Major Road Network
- Railway Line
- Noosa Shire Boundary
- Streams and Rivers
- Inset

- #### Existing Trunk Infrastructure
- Indoor Facility (District)
 - Indoor Facility (Shire-Wide)
 - Recreation Park (District)
 - Recreation Park (Shire-Wide)
 - Sport Park (District)
 - Sport Park (Shire-Wide)
- #### Future Trunk Infrastructure
- X -- (Item Reference)



**Mary River Catchment
LGIP-PFTI Public Parks & LCF
Map 5**



This map, is a reproduction from Council's GIS, has a scale of accuracy of 1:25 000, although data on which it is based was gathered at mostly finer scales. Precise boundaries may need to be defined by site survey.
Council Copyright Reserved.

Workspace Location: N:\07 Planning\PIA Maps\SR1

- Property Boundaries
- Major Water Bodies
- PIA Boundaries
- Locality Boundaries (Catchments)
- Major Road Network
- Railway Line
- Noosa Shire Boundary
- Streams and Rivers
- Inset

Existing Trunk Infrastructure

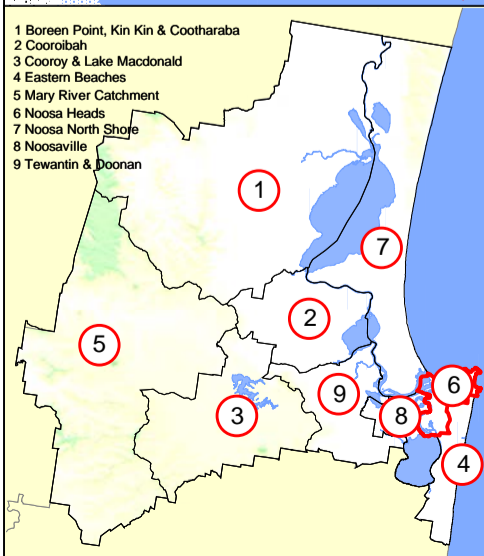
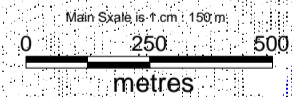
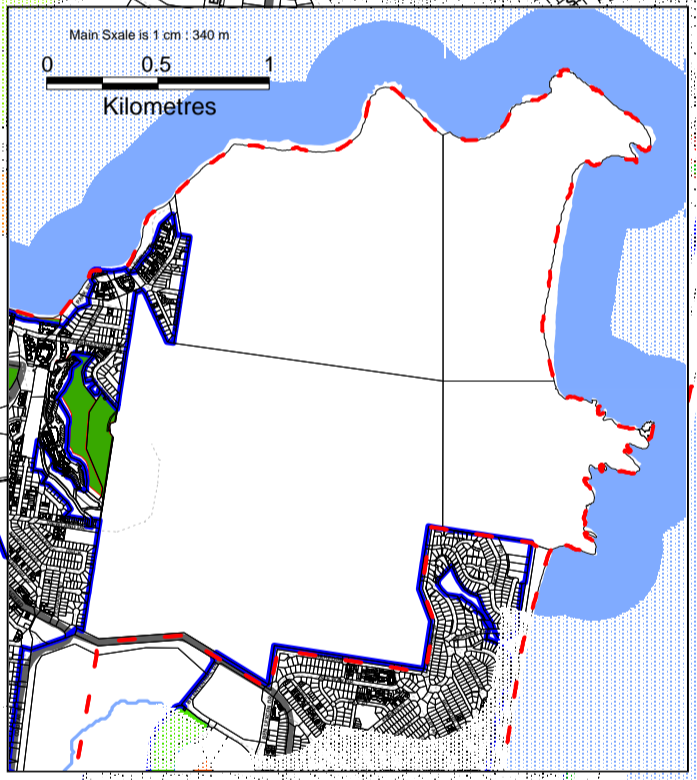
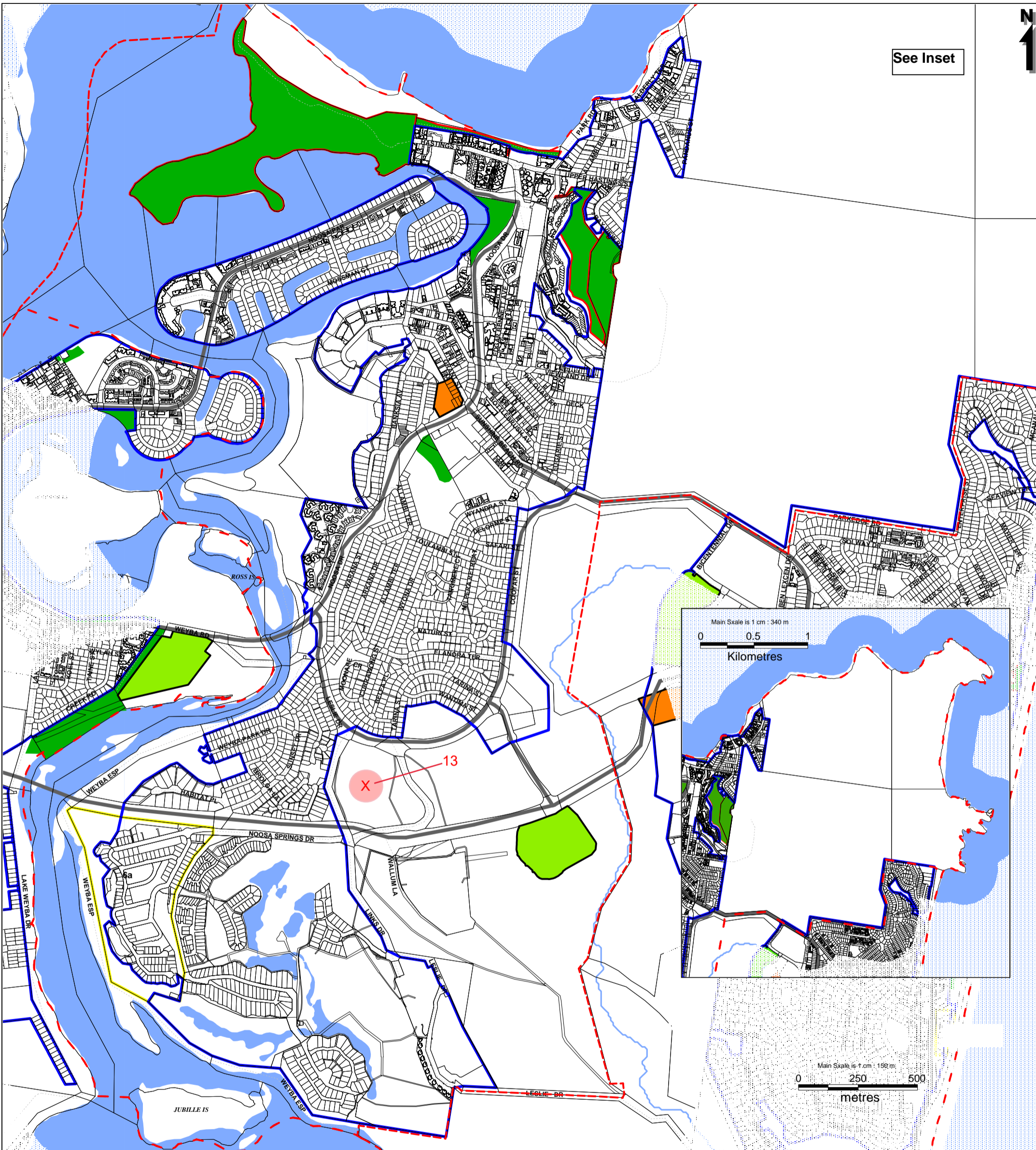
- Indoor Facility (District)
- Indoor Facility (Shire-Wide)
- Recreation Park (District)
- Recreation Park (Shire-Wide)
- Sport Park (District)
- Sport Park (Shire-Wide)

Future Trunk Infrastructure

X -- (Item Reference)



See Inset



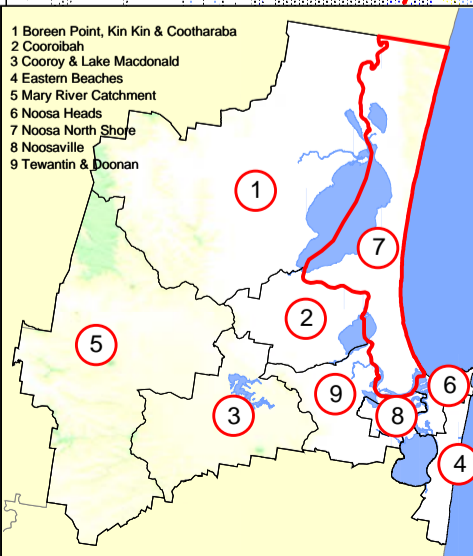
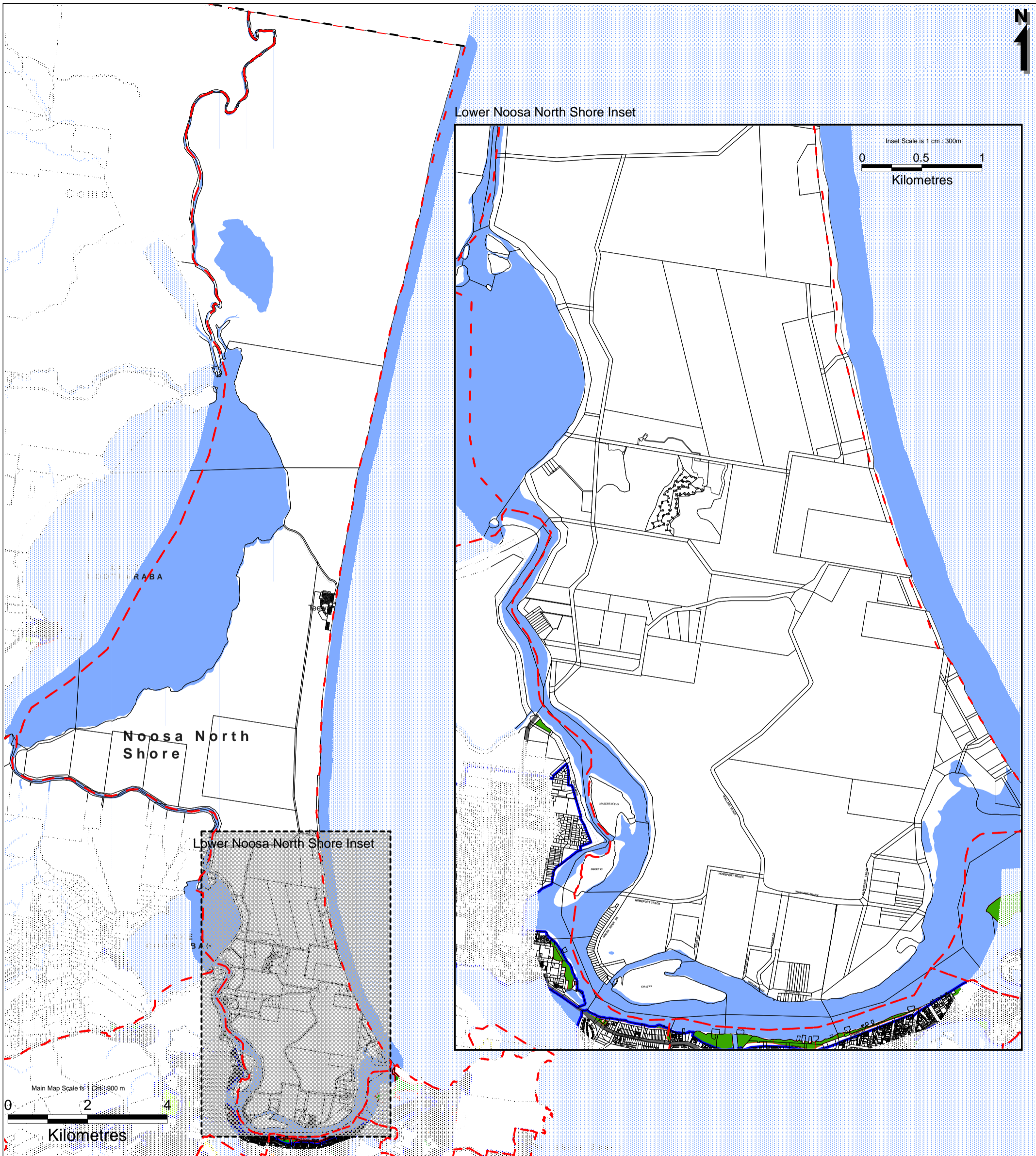
Noosa Heads LGIP-PFTI Public Parks & LCF Map 6

This map is a reproduction from Council's GIS, has a scale of accuracy of 1:25 000, although data on which it is based was gathered at mostly finer scales. Precise boundaries may need to be defined by site survey. Council Copyright Reserved.

Workspace Location: N:\07 Planning\PIA Maps\SR1

- Property Boundaries
- Major Water Bodies
- PIA Boundaries
- Locality Boundaries (Catchments)
- Major Road Network
- Railway Line
- Noosa Shire Boundary
- Streams and Rivers
- Inset

- Existing Trunk Infrastructure**
- Indoor Facility (District)
 - Indoor Facility (Shire-Wide)
 - Recreation Park (District)
 - Recreation Park (Shire-Wide)
 - Sport Park (District)
 - Sport Park (Shire-Wide)
- Future Trunk Infrastructure**
- X -- (Item Reference)



Noosa North Shore LGIP-PFTI Public Parks & LFC Map 7



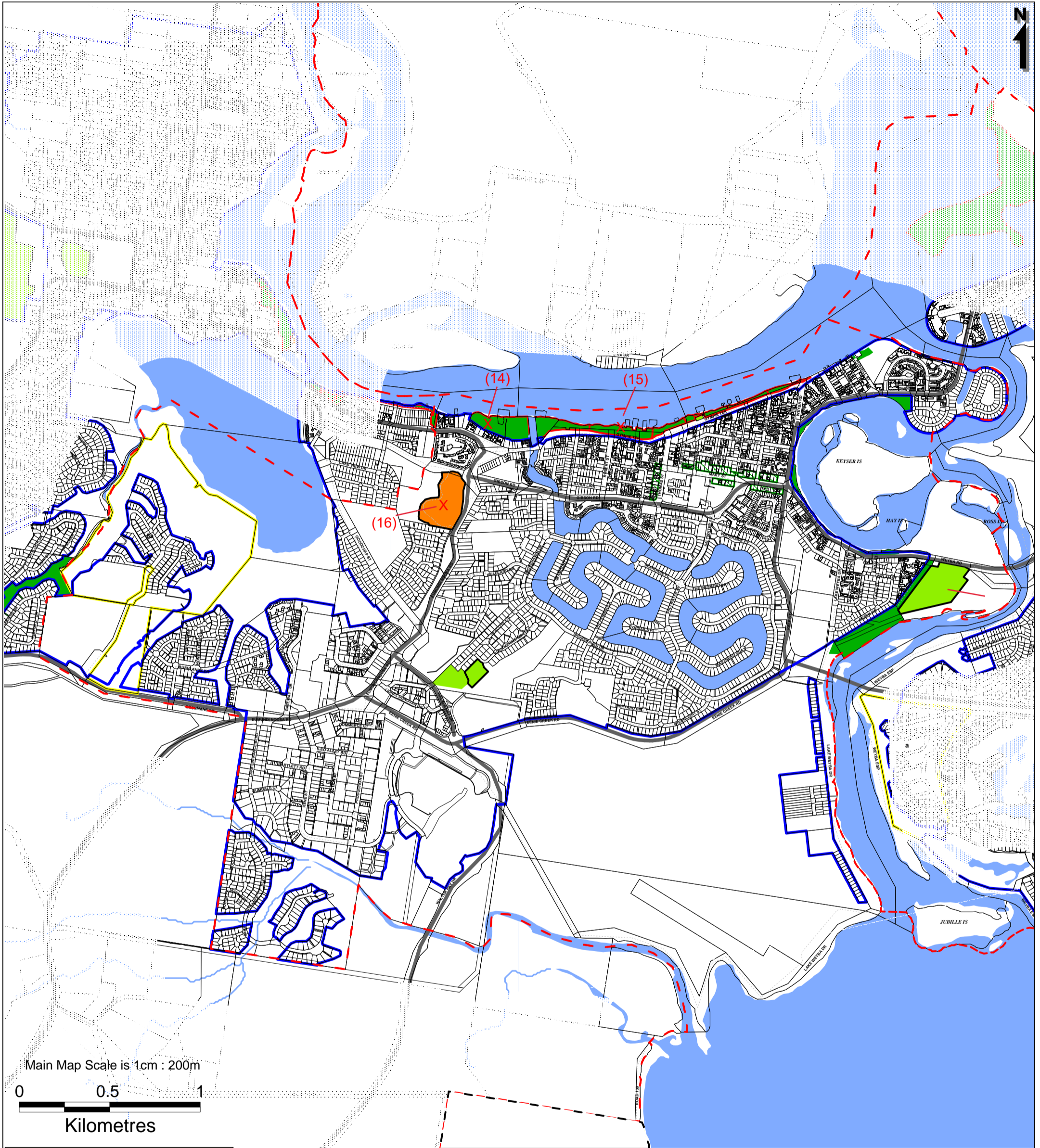
This map is a reproduction from Council's GIS, has a scale of accuracy of 1:25 000, although data on which it is based was gathered at mostly finer scales. Precise boundaries may need to be defined by site survey.
Council Copyright Reserved.

Workspace Location: N:\07 Planning\PIA Maps\SRI

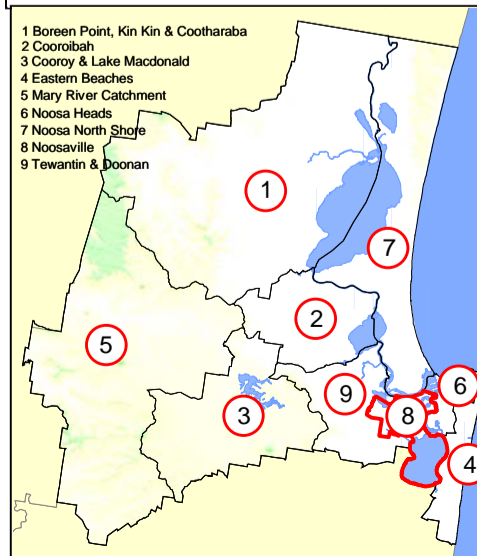
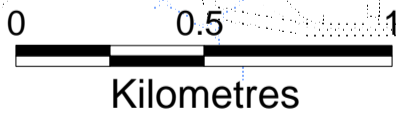
- Property Boundaries
- Major Water Bodies
- PIA Boundaries
- Locality Boundaries (Catchments)
- Major Road Network
- Railway Line
- Noosa Shire Boundary
- Streams and Rivers
- Inset

- #### Existing Trunk Infrastructure
- Indoor Facility (District)
 - Indoor Facility (Shire-Wide)
 - Recreation Park (District)
 - Recreation Park (Shire-Wide)
 - Sport Park (District)
 - Sport Park (Shire-Wide)

- #### Future Trunk Infrastructure
- X -- (Item Reference)



Main Map Scale is 1cm : 200m



Noosaville LGIP-PFTI Public Parks & LCF Map 8



This map is a reproduction from Council's GIS, has a scale of accuracy of 1:25 000, although data on which it is based was gathered at mostly finer scales. Precise boundaries may need to be defined by site survey. Council Copyright Reserved.

Workspace Location: N:\07 Planning\PIA Maps\SR1

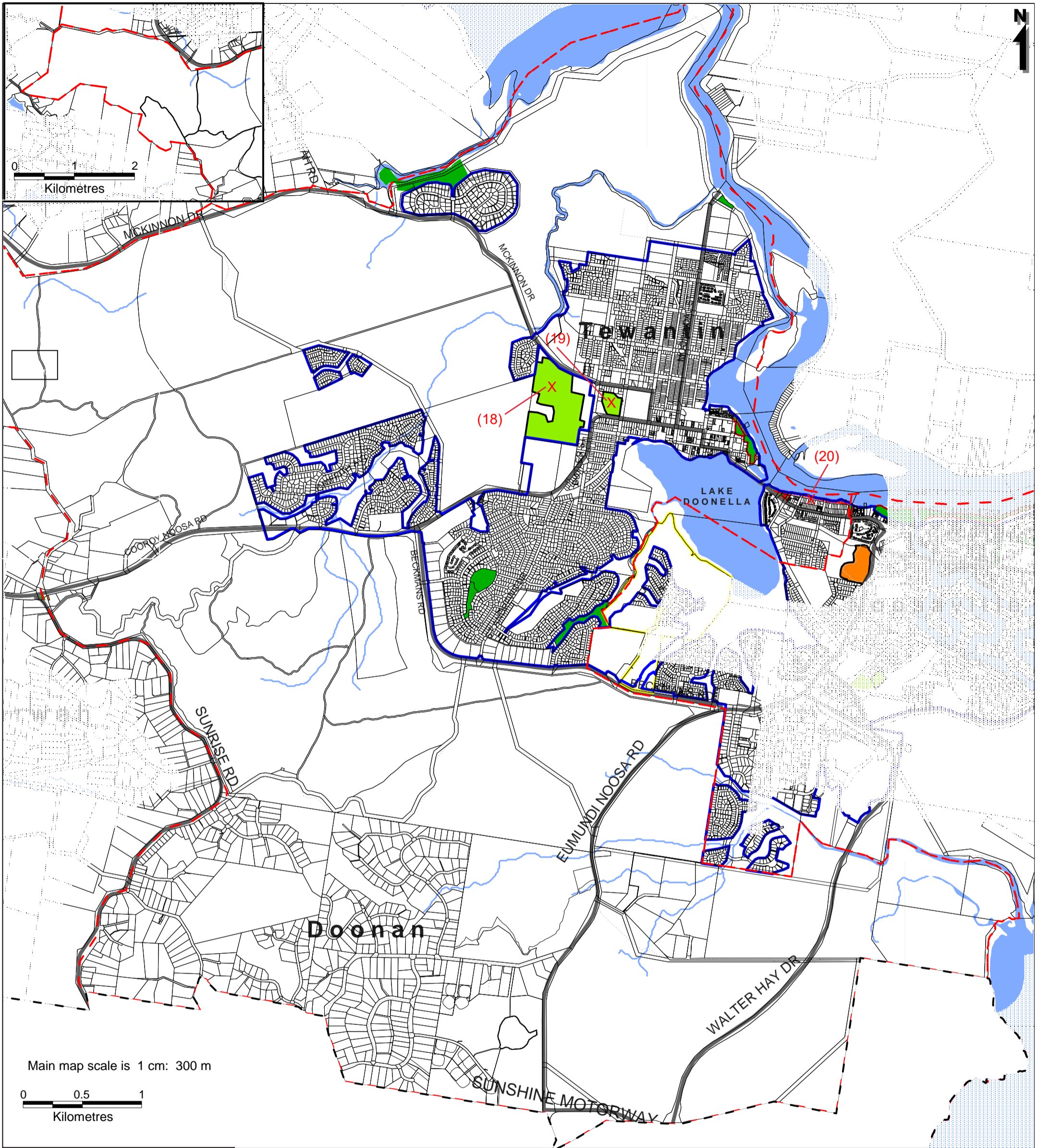
- Property Boundaries
- Major Water Bodies
- PIA Boundaries
- Locality Boundaries (Catchments)
- Major Road Network
- Railway Line
- Noosa Shire Boundary
- Streams and Rivers

Existing Trunk Infrastructure

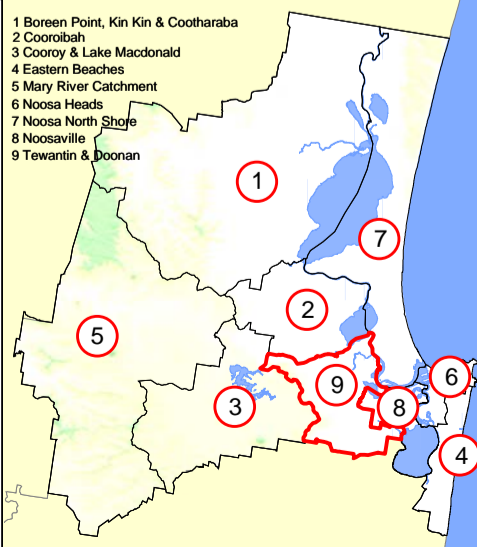
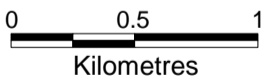
- Indoor Facility (District)
- Indoor Facility (Shire-Wide)
- Recreation Park (District)
- Recreation Park (Shire-Wide)
- Sport Park (District)
- Sport Park (Shire-Wide)

Future Trunk Infrastructure

- X -- (Item Reference)



Main map scale is 1 cm: 300 m



Tewanin & Doonan LGIP-PFTI Public Parks & LCF Map 9



This map is a reproduction from Council's GIS. It has a scale of accuracy of 1:25 000, although data on which it is based was gathered at mostly finer scales. Precise boundaries may need to be defined by site survey.
Council Copyright Reserved.

Workspace Location: N:\07 Planning\PIA Maps\SRI

- | | | | | | |
|--|----------------------------------|--|----------------------|--|------------------------------------|
| | Property Boundaries | | Major Road Network | | Indoor Facility (District) |
| | Major Water Bodies | | Railway Line | | Indoor Facility (Shire-Wide) |
| | PIA Boundaries | | Noosa Shire Boundary | | Recreation Park (District) |
| | Locality Boundaries (Catchments) | | Streams and Rivers | | Recreation Park (Shire-Wide) |
| | | | Inset | | Sport Park (District) |
| | | | | | Sport Park (Shire-Wide) |
| | | | | | Future Trunk Infrastructure |
| | | | | | X -- (Item Reference) |