

Gympie Regional Council Area

Boreen Point, Kin Kin & Cootharaba

Kin Kin

Boreen Point

Noosa North Shore

Cooran

Cooroibah

Pomona

Mary River Catchment

Cooroy & Lake Macdonald

Cooroy

Tewantin & Doonan

Tewantin

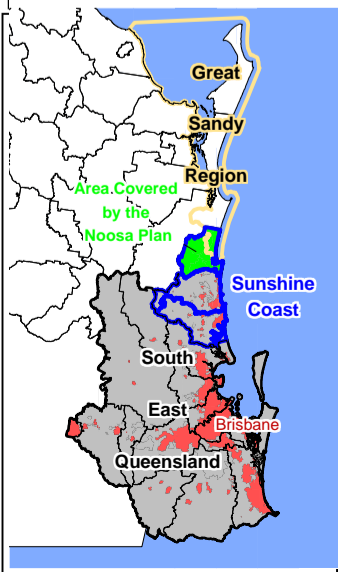
Neosaville

Noosa Heads

Eastern Beaches

Sunshine Coast Regional Council Area

Peregian



Noosa Plan PFTI Transport Key Map - Service Catchments



Scale 1cm : 1.3km

The map is a reproduction from Council's GIS, with a scale of accuracy of 1:25 000. Data on which it is based was gathered at mostly finer scales. Precise boundaries may need to be defined by site survey. Council Copyright Reserved.

Workspace Location: StrategyMap.wor

Trunk Roads

- Council
- Main Roads

— Streams/Rivers

PIA Boundaries

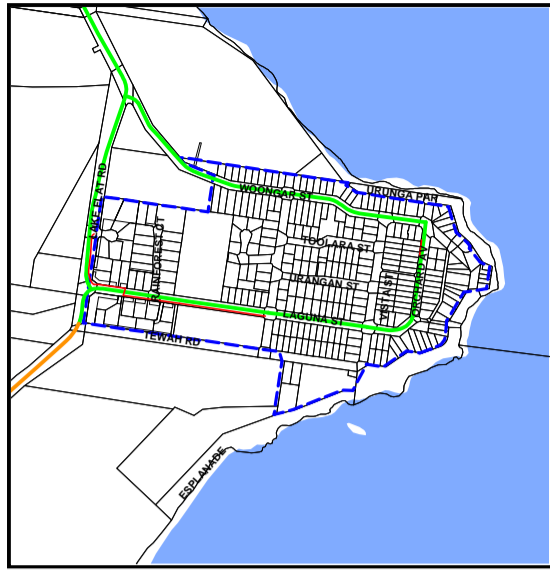
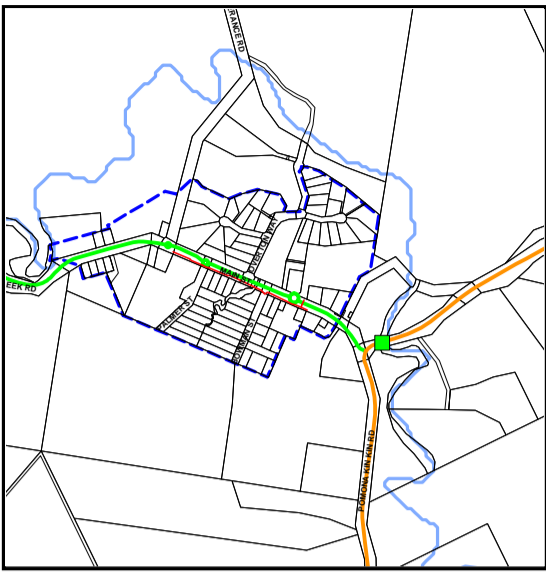
Noosa Shire Boundaries

Waterbodies

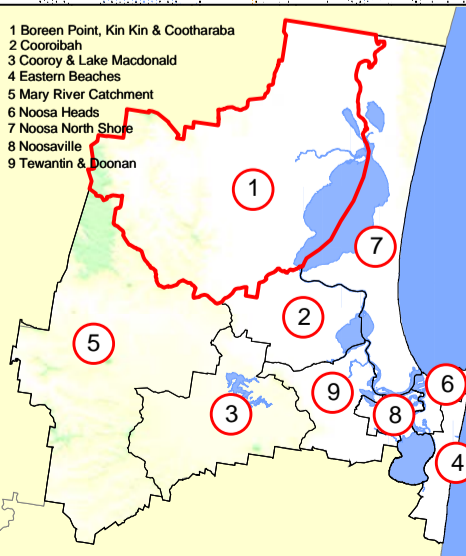
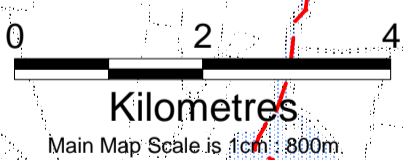
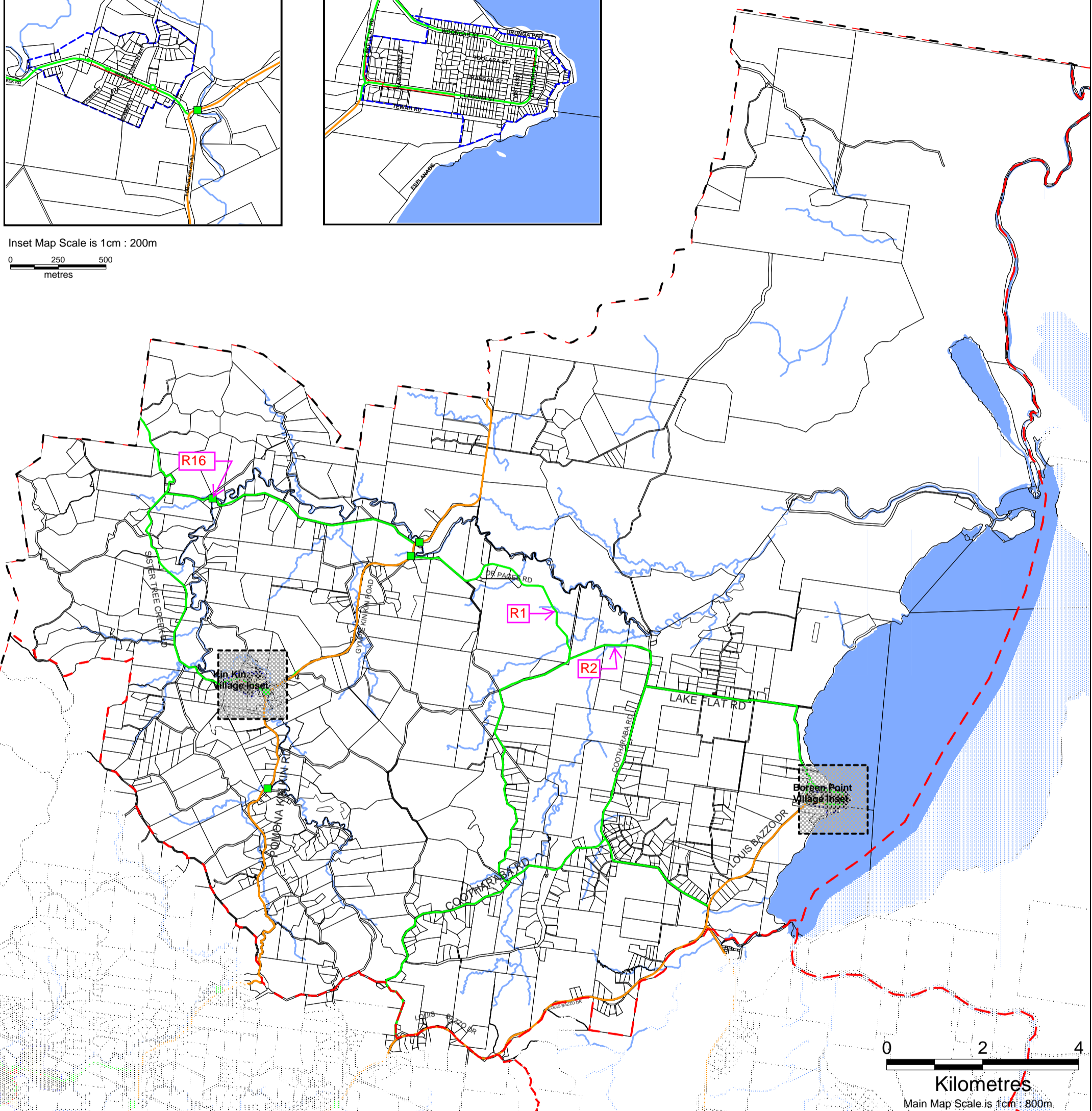
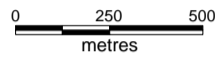
Service Catchments (Locality Boundary)

Kin Kin Village Inset

Boreen Point Village Inset



Inset Map Scale is 1cm : 200m



**Boreen Point, Kin Kin & Cootharaba
LGIP-PFTI Transport
Map 1**

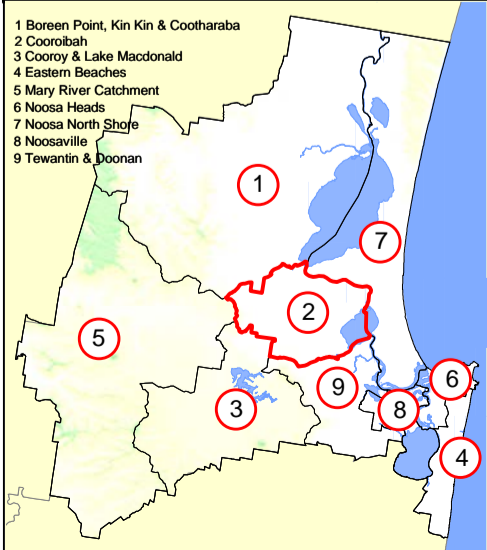
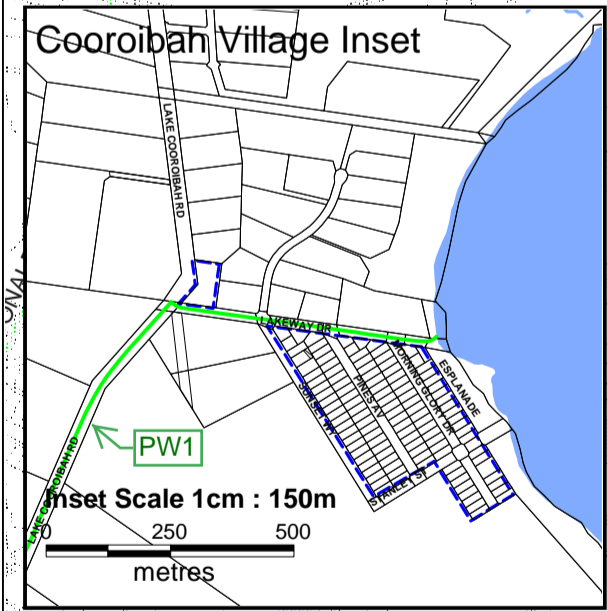
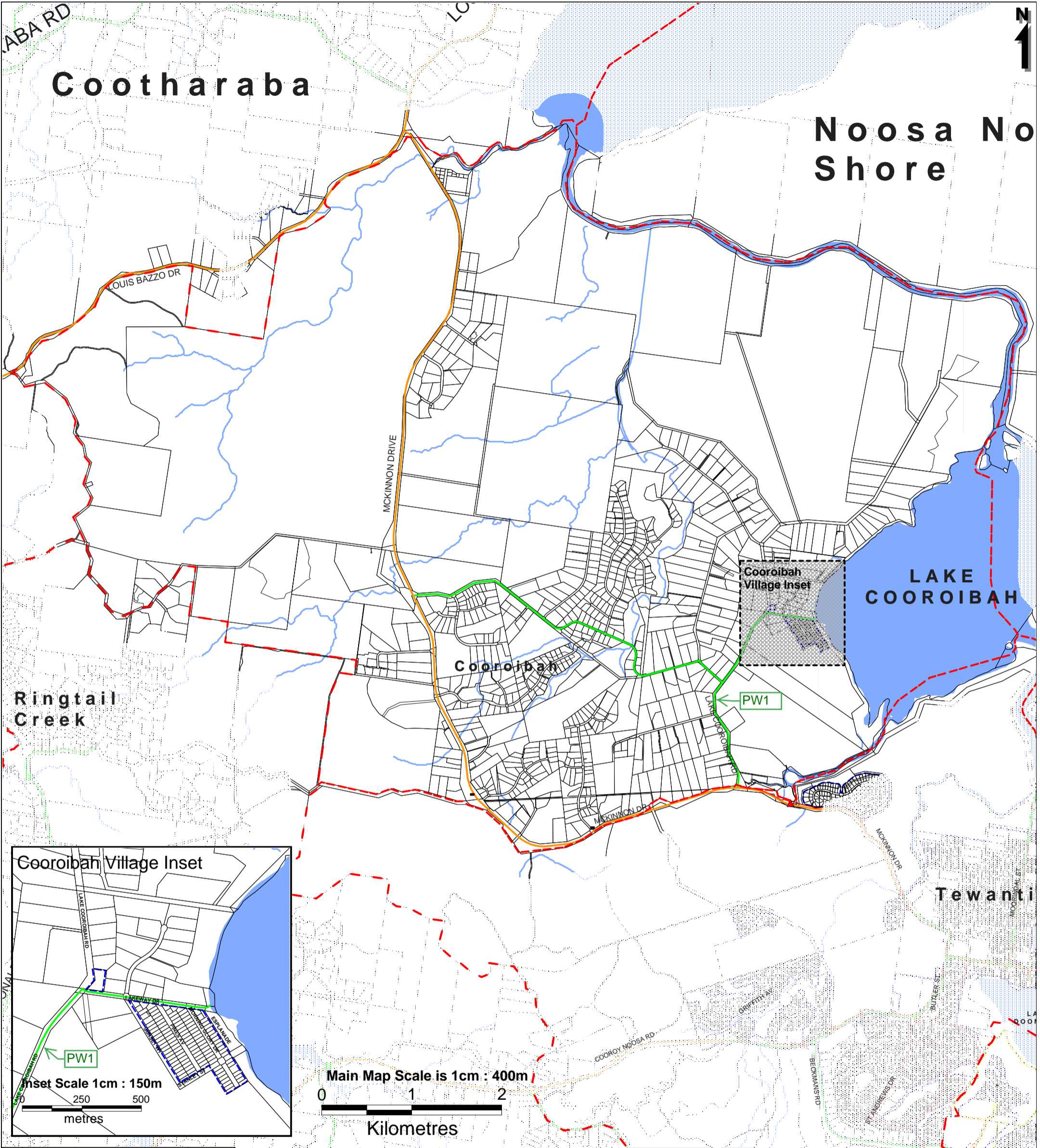


This map is a reproduction from Council's GIS, has a scale of accuracy of 1:25 000, although data on which it is based was gathered at mostly finer scales. Precise boundaries may need to be defined by site survey. Council Copyright Reserved.

Workspace Location: N:\07 Planning\Projects_Done_by_Ali_for_LUD\Transport

- Service Catchments (Locality Boundary)
- Property Boundaries
- Major Water Bodies
- PIA Boundaries
- Inset
- Railway Line
- Noosa Shire Boundary
- Streams and Rivers
- Future Trunk Infrastructure**
- X → Road Project ID
- X → Pathway Project ID
- Bus Stop HASTUS No

- Existing Trunk Infrastructure**
- Trunk Bridges**
 - ▲ Footbridge
 - Roadbridge
 - Underpass
 - Trunk Bus Stops**
 -
 - Trunk Roads**
 - Council
 - Main Roads
 - Trunk Paths**
 -



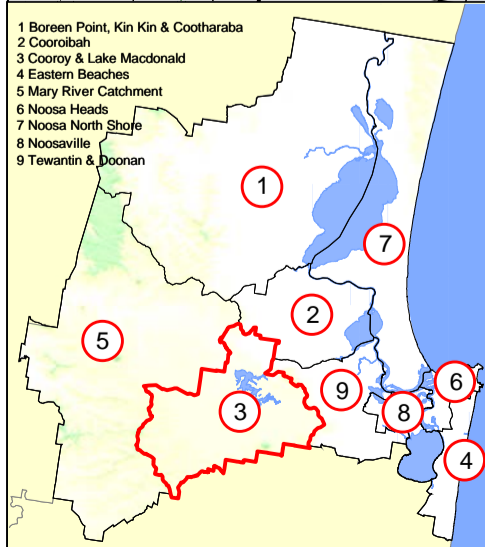
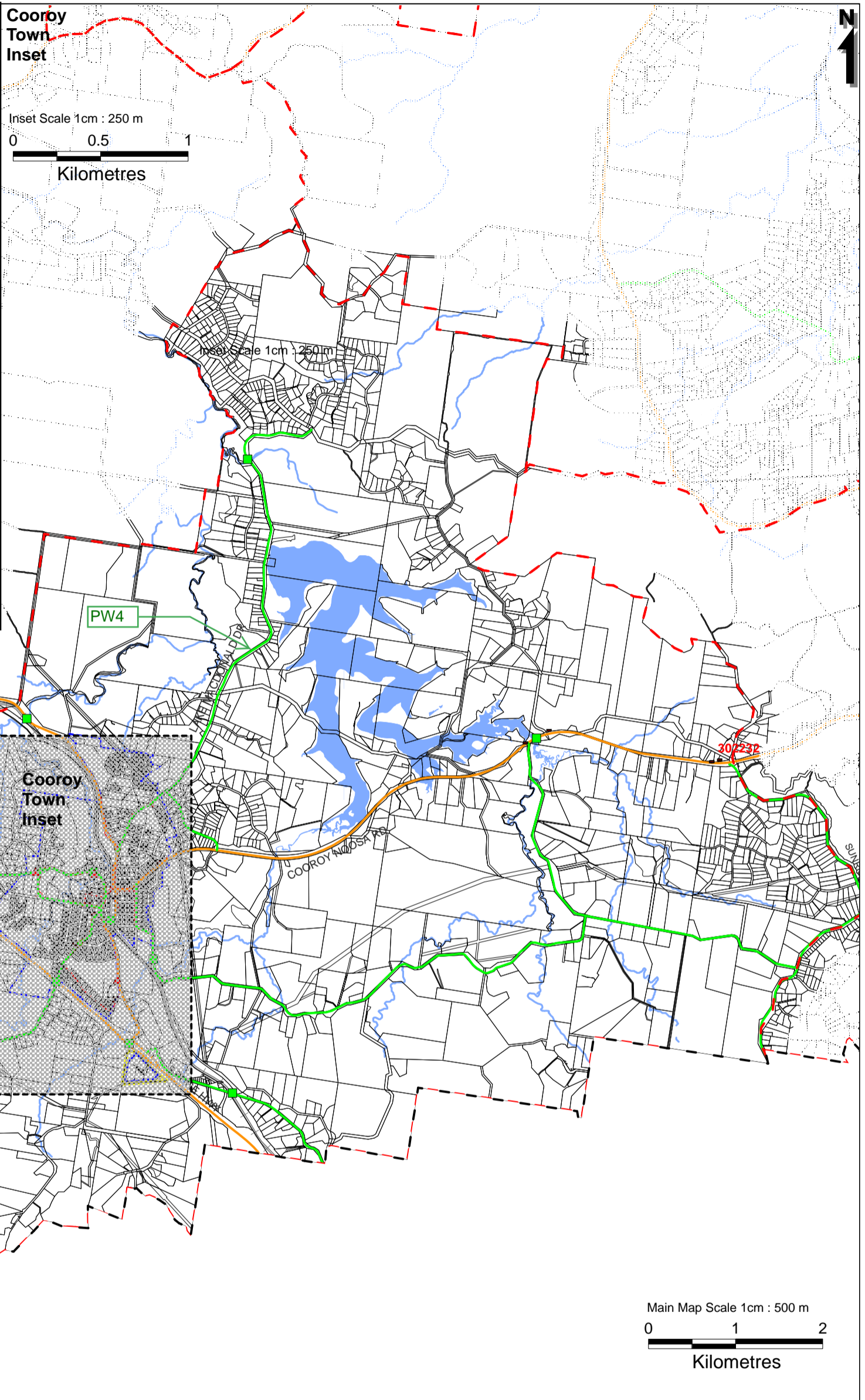
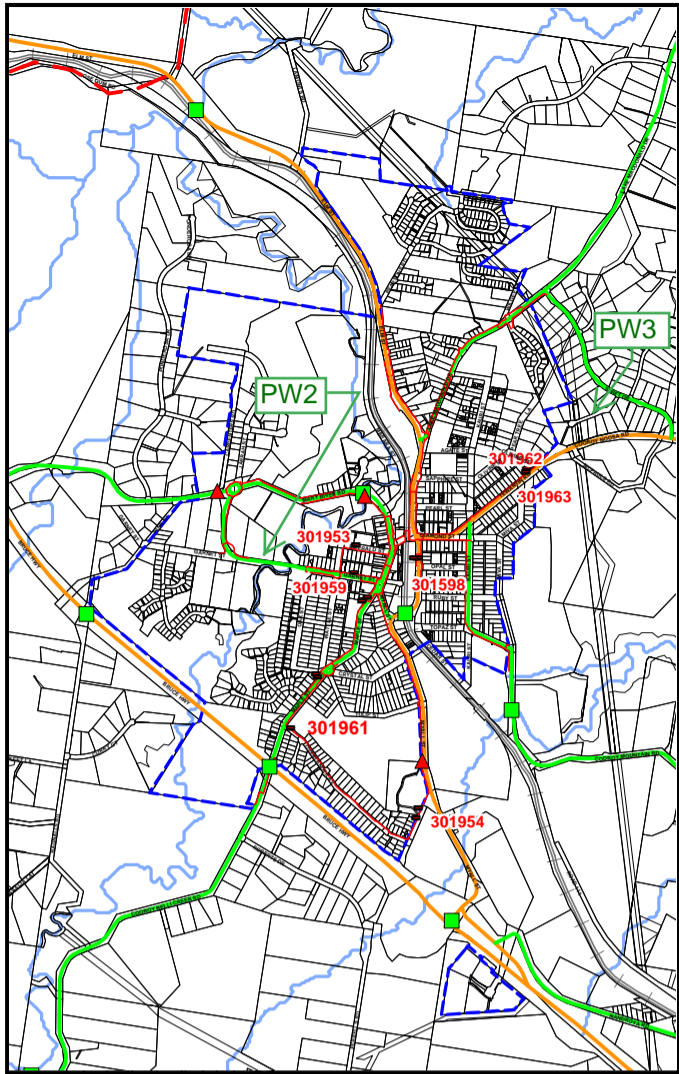
Cooroiabah LGIP-PFTI Transport Map 2



This map is a reproduction from Council's GIS, has a scale of accuracy of 1:25 000, although data on which it is based was gathered at mostly finer scales. Precise boundaries may need to be defined by site survey. Council Copyright Reserved.

Workspace Location: N:\07 Planning\Projects_Done_by_Ali_for_LUD\Transport

- Service Catchments (Locality Boundary)
- Property Boundaries
- Major Water Bodies
- PIA Boundaries
- Railway Line
- Noosa Shire Boundary
- Streams and Rivers
- Inset
- Future Trunk Infrastructure
- Road Project ID
- Pathway Project ID
- Bus Stop HASTUS No
- Existing Trunk Infrastructure**
- Trunk Bridges**
- ▲ Footbridge
- Roadbridge
- Underpass
- Trunk Bus Stops**
-
- Trunk Roads**
- Council
- Main Roads
- Trunk Paths**
-



**Cooroy & Lake Macdonald
LGIP-PFTI Transport
Map 3**



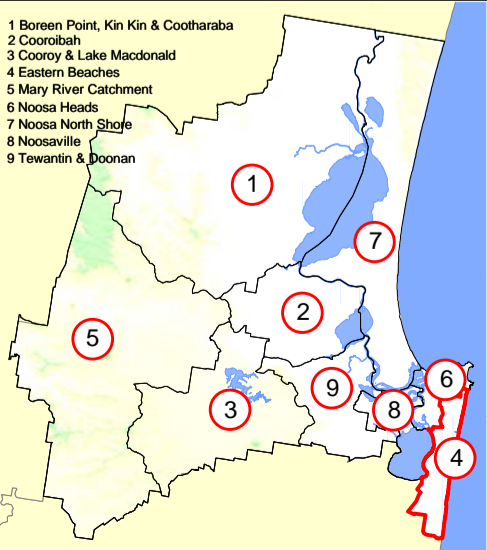
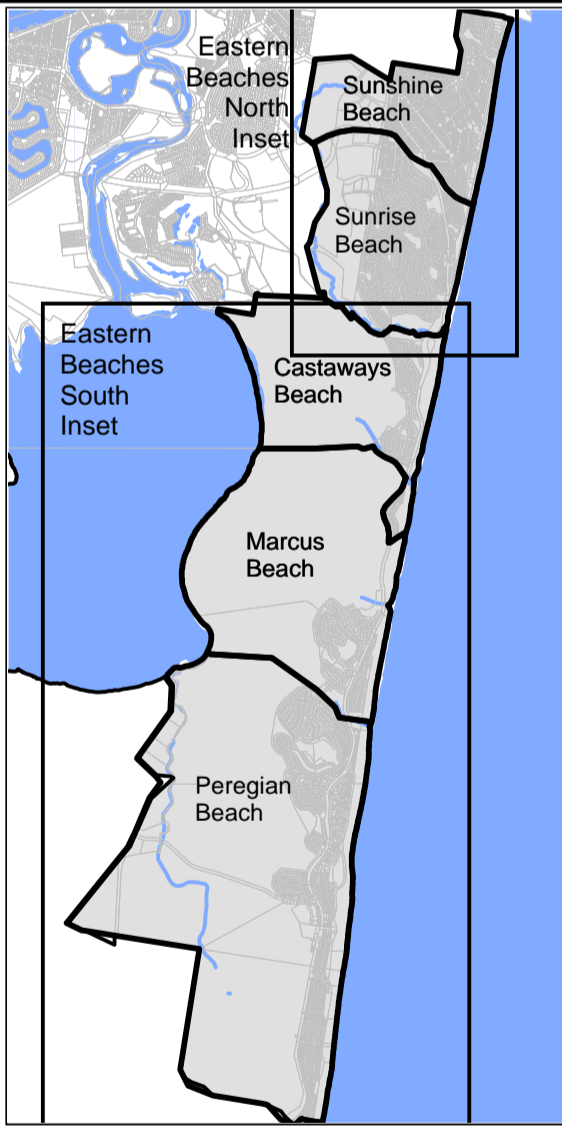
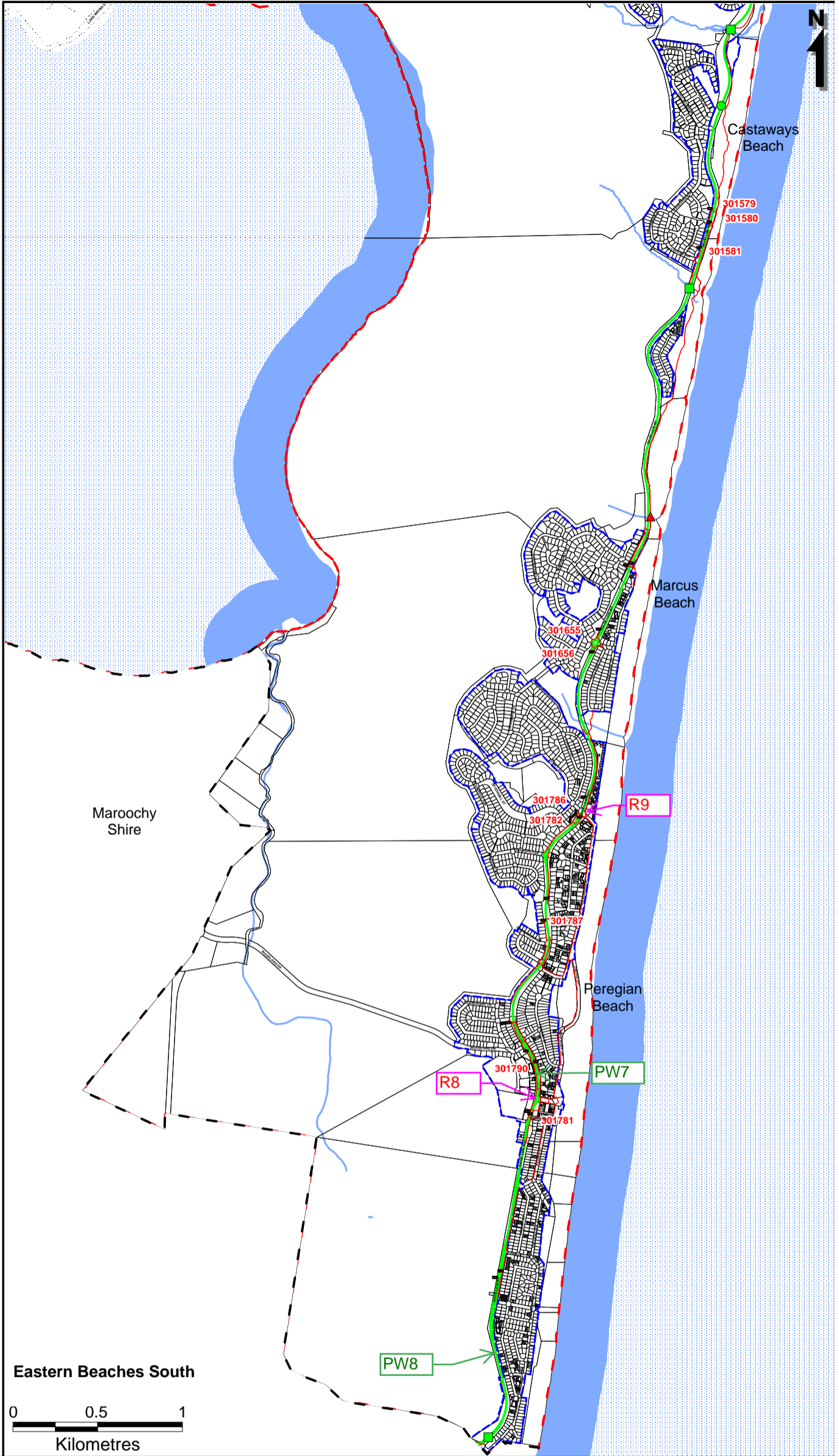
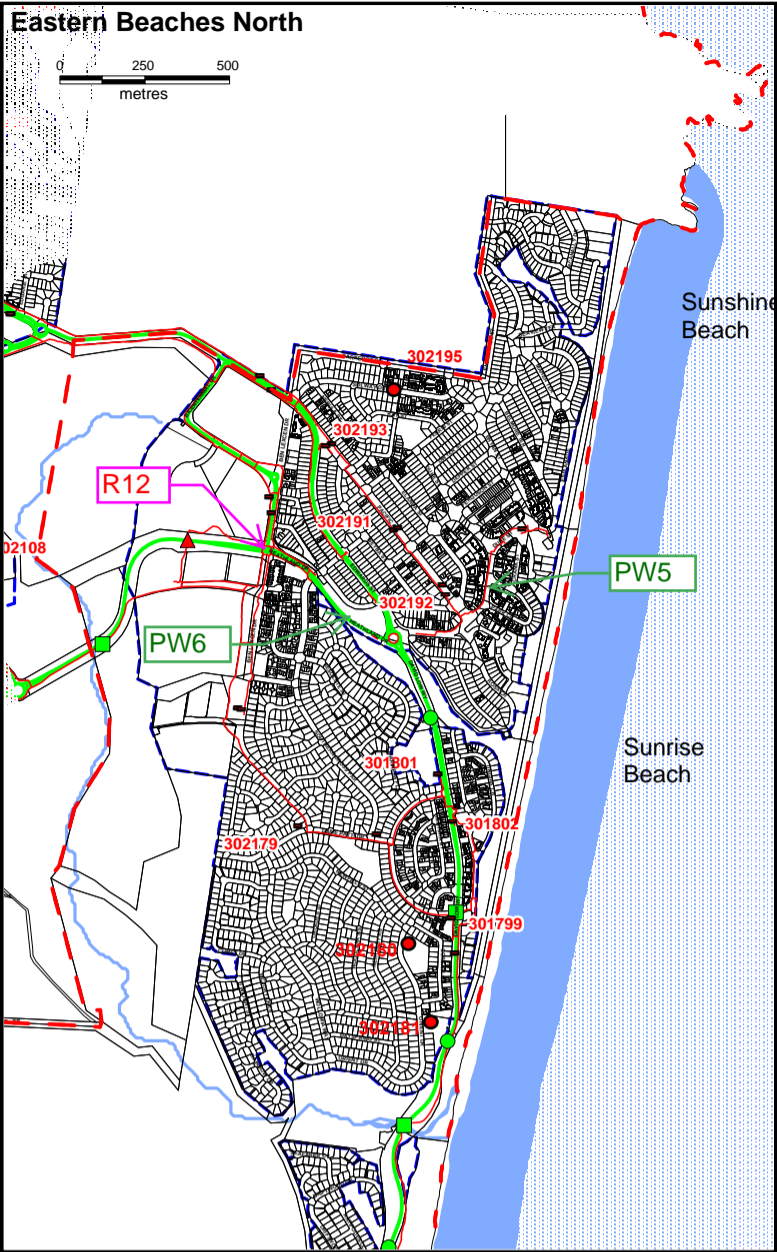
This map is a reproduction from Council's GIS, has a scale of accuracy of 1:25 000, although data on which it is based was gathered at mostly finer scales. Precise boundaries may need to be defined by site survey. Council Copyright Reserved.

N:\07 Planning\Projects_Done_by_Ali_for_LUDI\Transport

- Service Catchments (Locality Boundary)
- Property Boundaries
- Major Water Bodies
- PIA Boundaries
- Railway Line
- Noosa Shire Boundary
- Streams and Rivers
- Inset
- Future Trunk Infrastructure
- X → Road Project ID
- X → Pathway Project ID
- Bus Stop HASTUS No

Existing Trunk Infrastructure

- Trunk Bridges**
 - ▲ Footbridge
 - Roadbridge
 - Underpass
- Trunk Bus Stops**
 -
- Trunk Roads**
 - Council
 - Main Roads
- Trunk Paths**
 -



Eastern Beaches LGIP-PFTI Transport Map 4

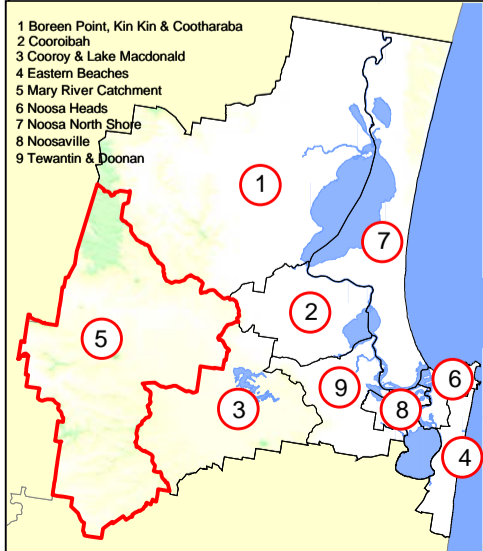
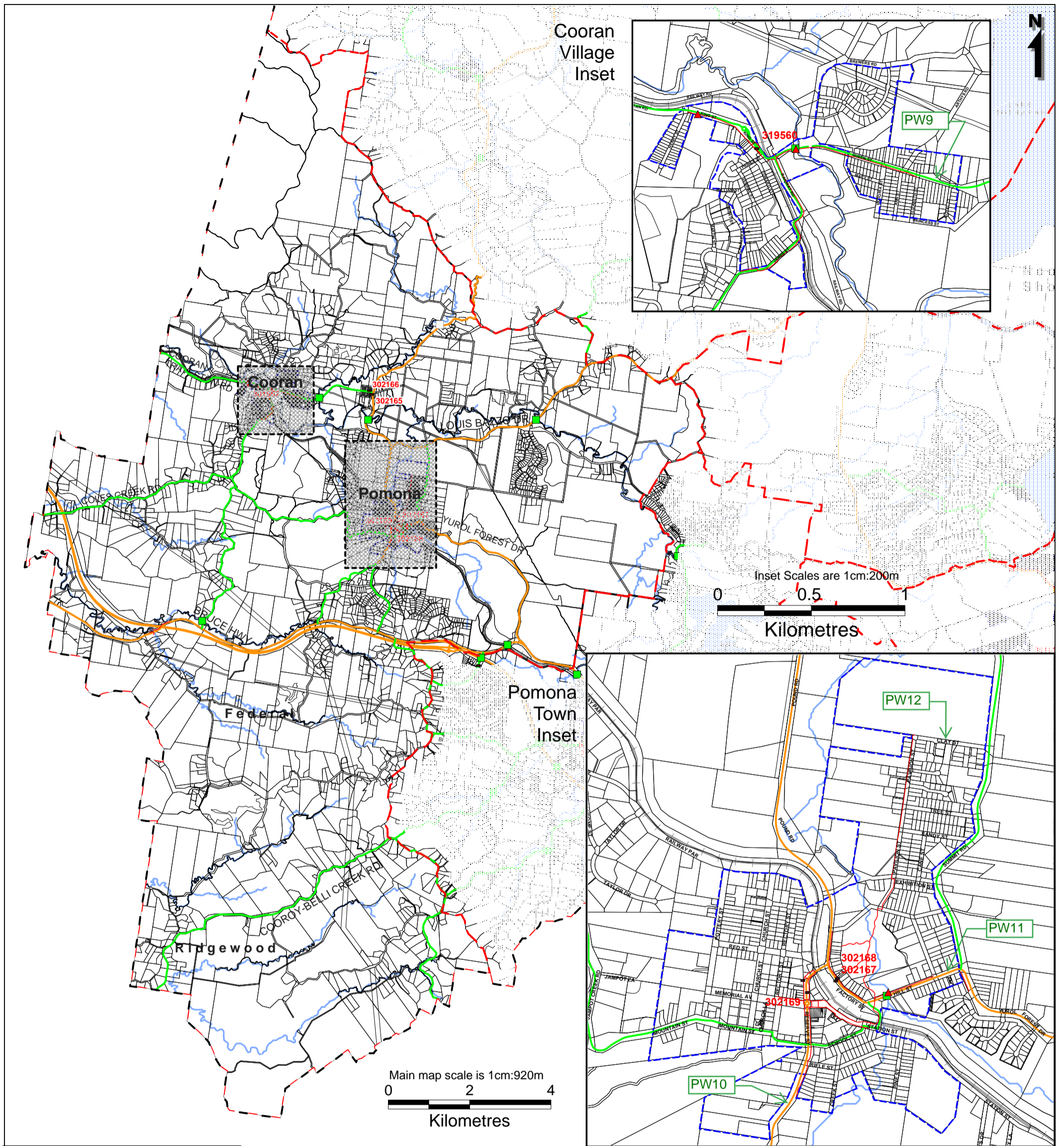


This map, is a reproduction from Council's GIS, has a scale of accuracy of 1:25 000, although data on which it is based was gathered at mostly finer scales. Precise boundaries may need to be defined by site survey. Council Copyright Reserved.

N:\07 Planning\Projects_Done_by_Ali_for_LUD\Transportr

- Service Catchments (Locality Boundary)
- Property Boundaries
- Major Water Bodies
- PIA Boundaries
- Railway Line
- Noosa Shire Boundary
- Streams and Rivers
- Inset
- X Road Project ID
- X Pathway Project ID
- Bus Stop HASTUS No

- Existing Trunk Infrastructure**
- Trunk Bridges
 - ▲ Footbridge
 - Roadbridge
 - Underpass
- Trunk Bus stops
 -
- Trunk Roads
 - Council
 - Main Roads
- Trunk Paths
 -



Mary River Catchment LGIP-PFTI Transport Map 5



This map is a reproduction from Council's GIS, has a scale of accuracy of 1:25 000, although data on which it is based was gathered at mostly finer scales. Precise boundaries may need to be defined by site survey. Council Copyright Reserved.

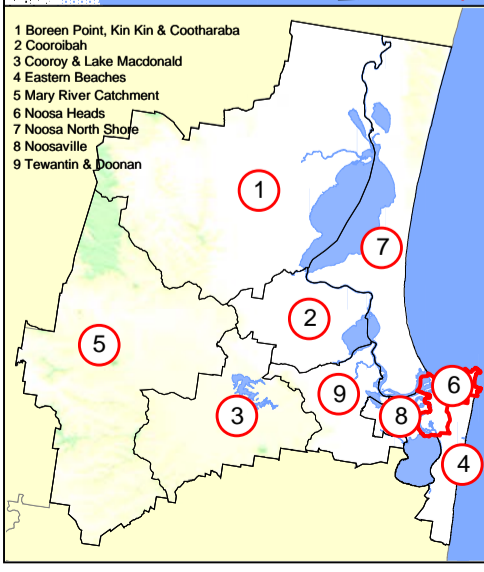
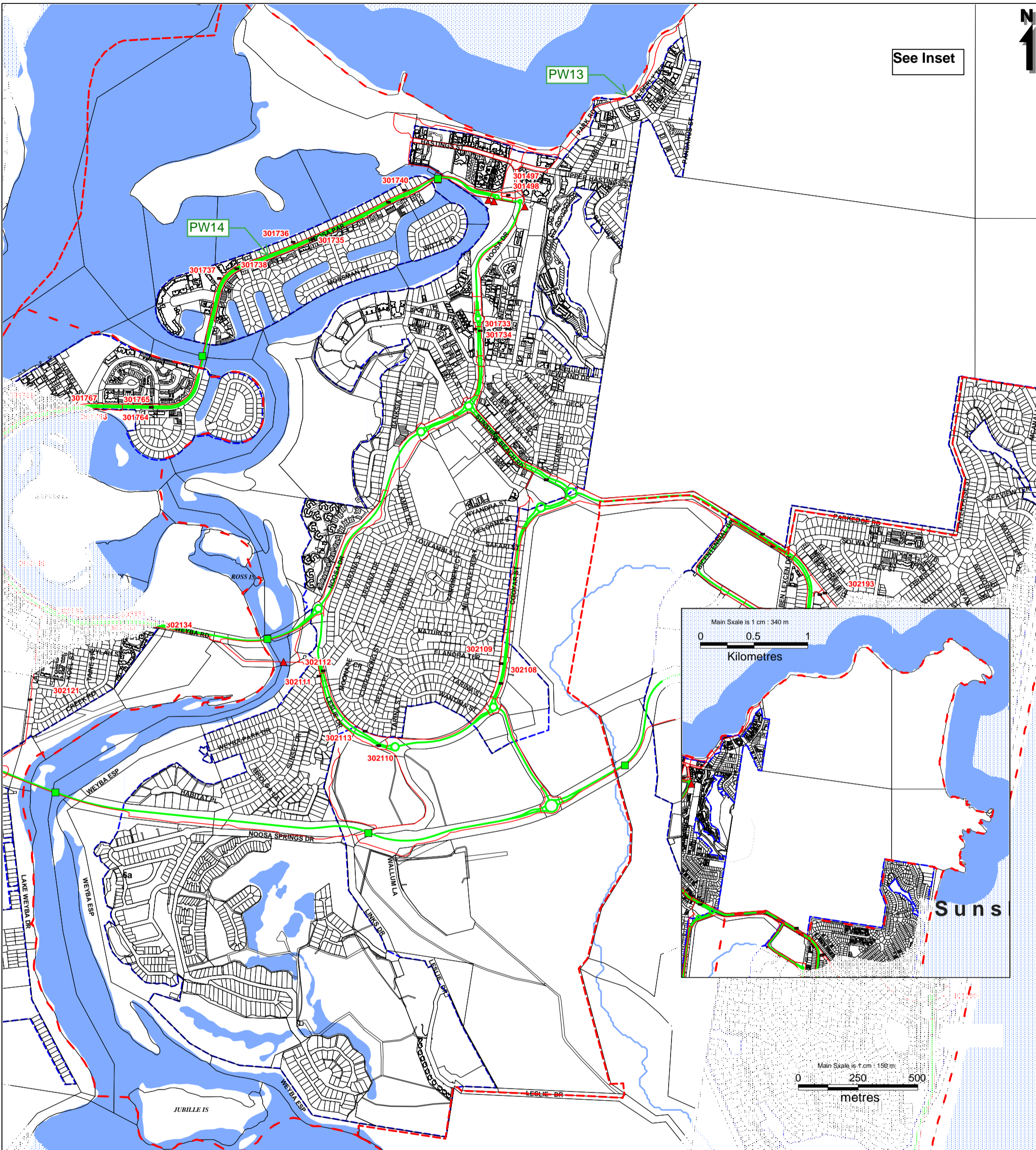
N:\07 Planning\Projects_Done_by_Ali_for_LUDI\Transport

- Service Catchments (Locality Boundary)**
- Property Boundaries**
- Major Water Bodies**
- PIA Boundaries**
- Inset**
- X **Road Project ID**
- X **Pathway Project ID**
- **Bus Stop HASTUS No**
- Railway Line**
- Noosa Shire Boundary**
- Streams and Rivers**
- Inset**

- Existing Trunk Infrastructure**
- Trunk Bridges**
 - ▲ Footbridge
 - Roadbridge
 - Underpass
 - Trunk Bus Stops**
 -
 - Trunk Roads**
 - Council
 - Main Roads
 - Trunk Paths**
 -



See Inset



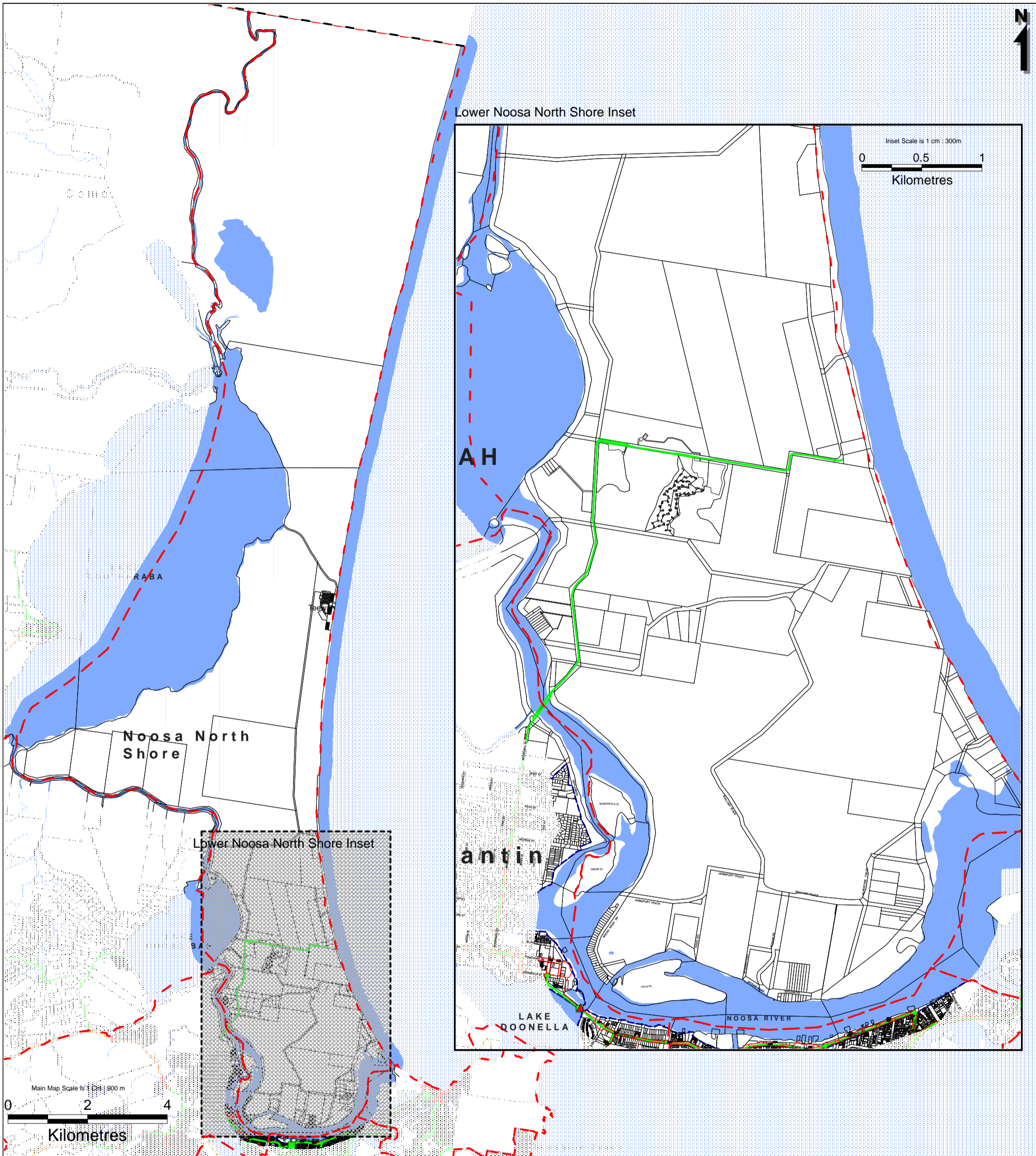
Noosa Heads LGIP-PFTI Transport Map 6

This map is a reproduction from Council's GIS, has a scale of accuracy of 1:25 000, although data on which it is based was gathered at mostly finer scales. Precise boundaries may need to be defined by site survey. Council Copyright Reserved.

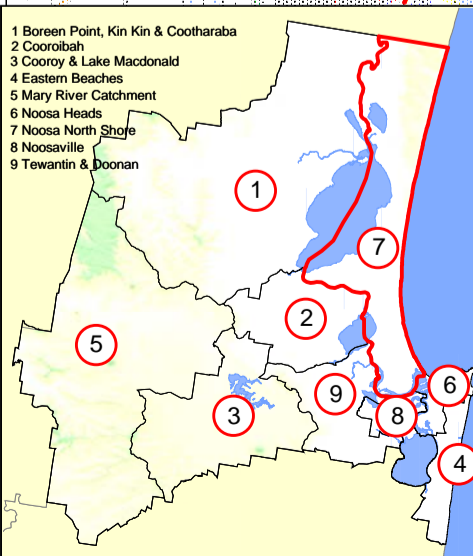
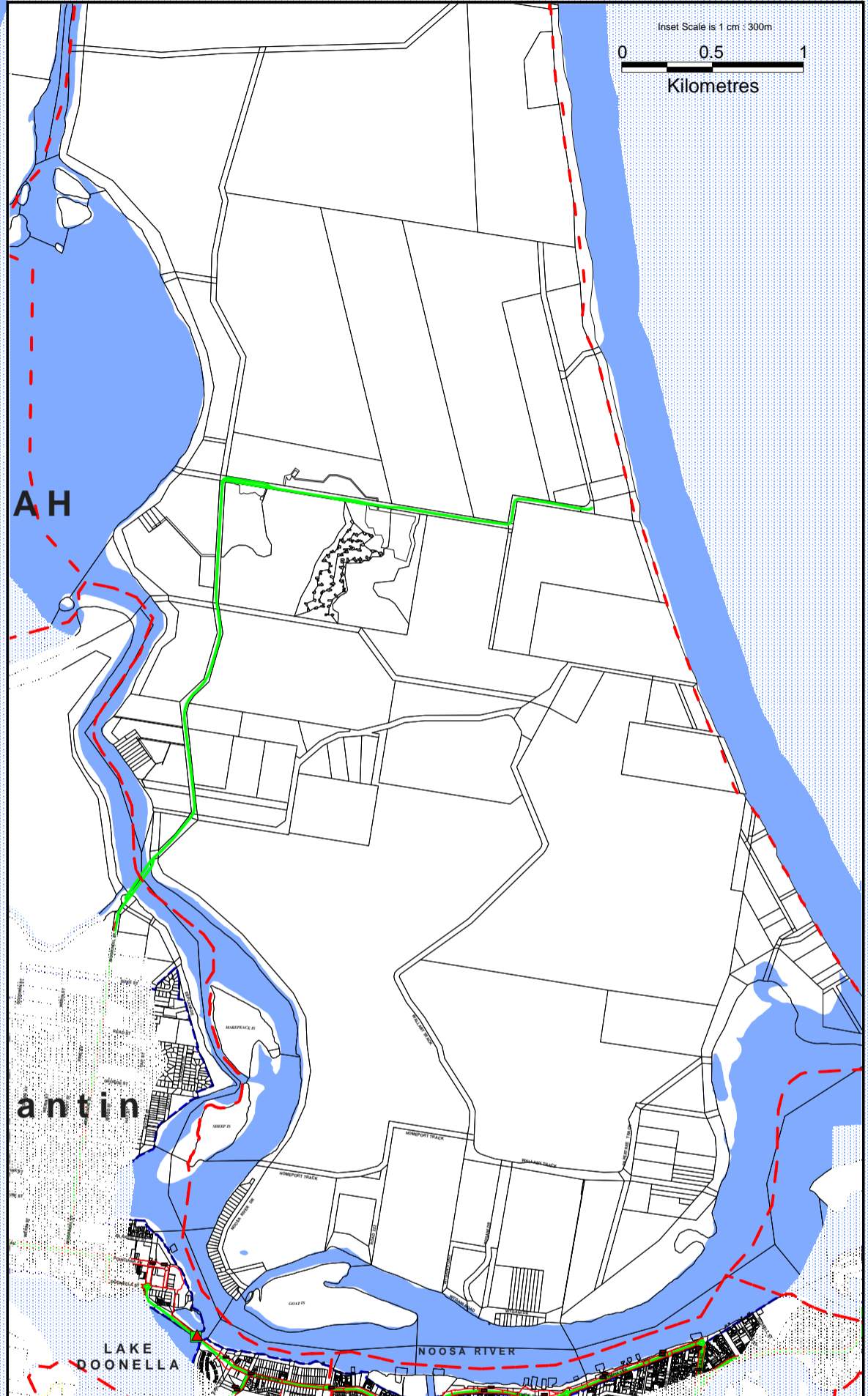
Workspace Location: N:\Projects_Done_by_Ali_for_LUDI\Transport

- Service Catchments (Locality Boundary)
- Property Boundaries
- Major Water Bodies
- PIA Boundaries
- Railway Line
- Noosa Shire Boundary
- Streams and Rivers
- Inset
- X → Road Project ID
- X → Pathway Project ID
- Bus Stop HASTUS No

- #### Existing Trunk Infrastructure
- Trunk Bridges
 - ▲ Footbridge
 - Roadbridge
 - Underpass
 - Trunk_Bus Stops
 - Trunk Roads
 - Council
 - Main Roads
 - Trunk Paths



Lower Noosa North Shore Inset



Noosa North Shore LGIP-PFTI Transport Map 7



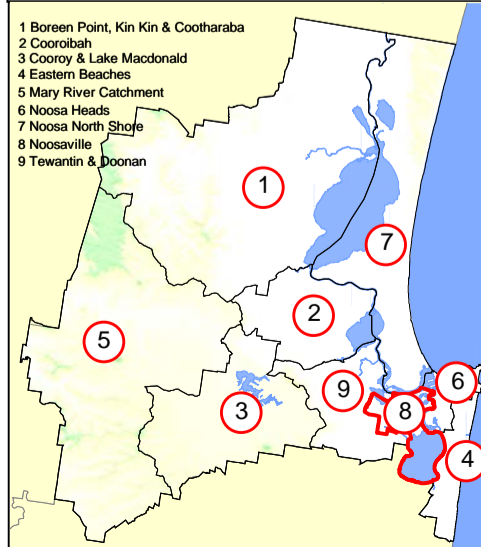
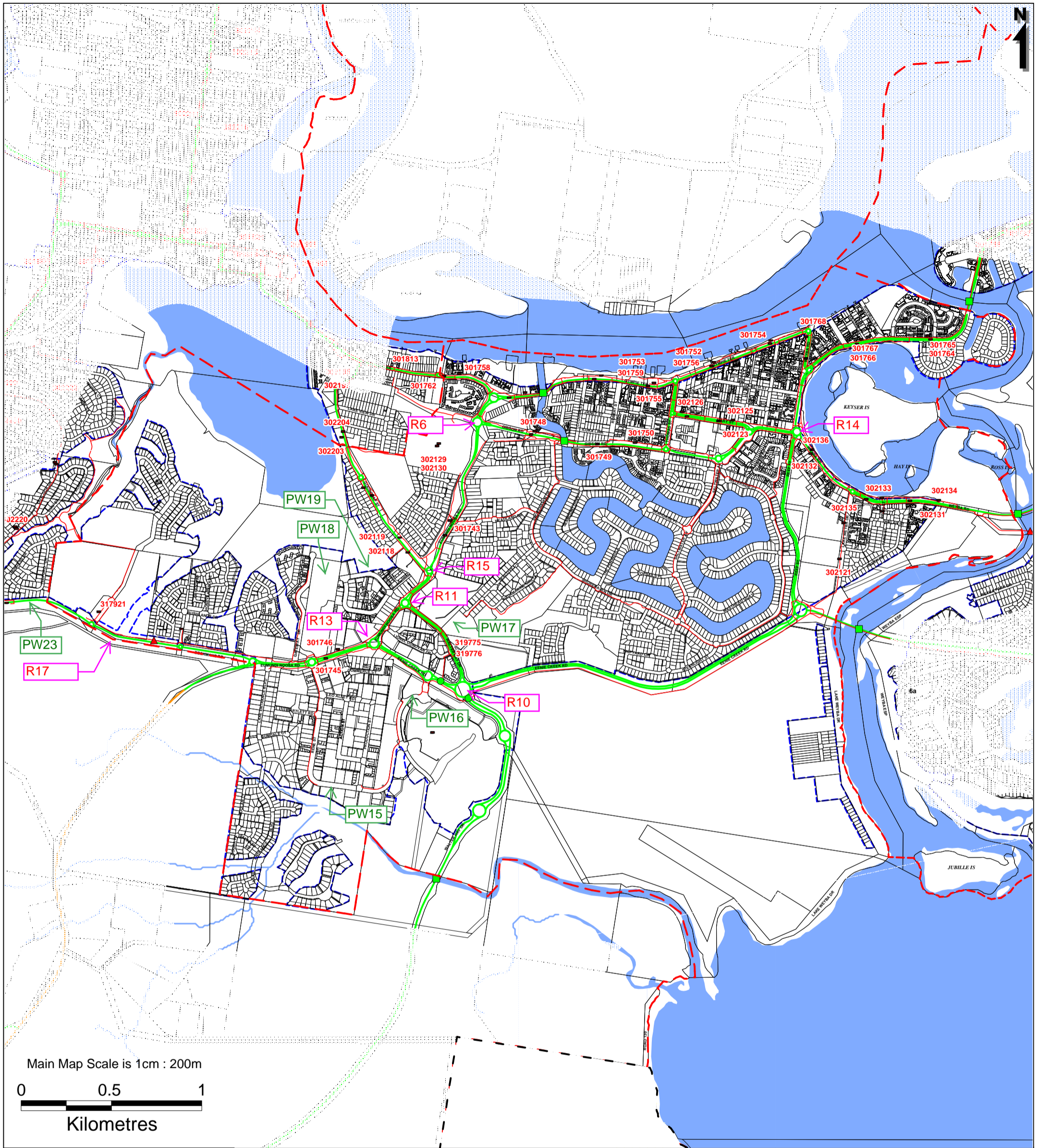
This map is a reproduction from Council's GIS, has a scale of accuracy of 1:25 000, although data on which it is based was gathered at mostly finer scales. Precise boundaries may need to be defined by site survey.
Council Copyright Reserved.

N:\07 Planning\Projects_Done_by_Ali_for_LUD\Transport

- Service Catchments (Locality Boundary)
- Property Boundaries
- Major Water Bodies
- PIA Boundaries
- Railway Line
- Noosa Shire Boundary
- Streams and Rivers
- Inset
- X → Road Project ID
- X → Pathway Project ID
- Bus Stop HASTUS No

Existing Trunk Infrastructure

- Trunk Bridges**
 - ▲ Footbridge
 - Roadbridge
 - Underpass
- Trunk Bus Stops**
 -
- Trunk Roads**
 - Council
 - Main Roads
- Trunk Paths**
 -



Noosaville LGIP-PFTI Transport Map 8

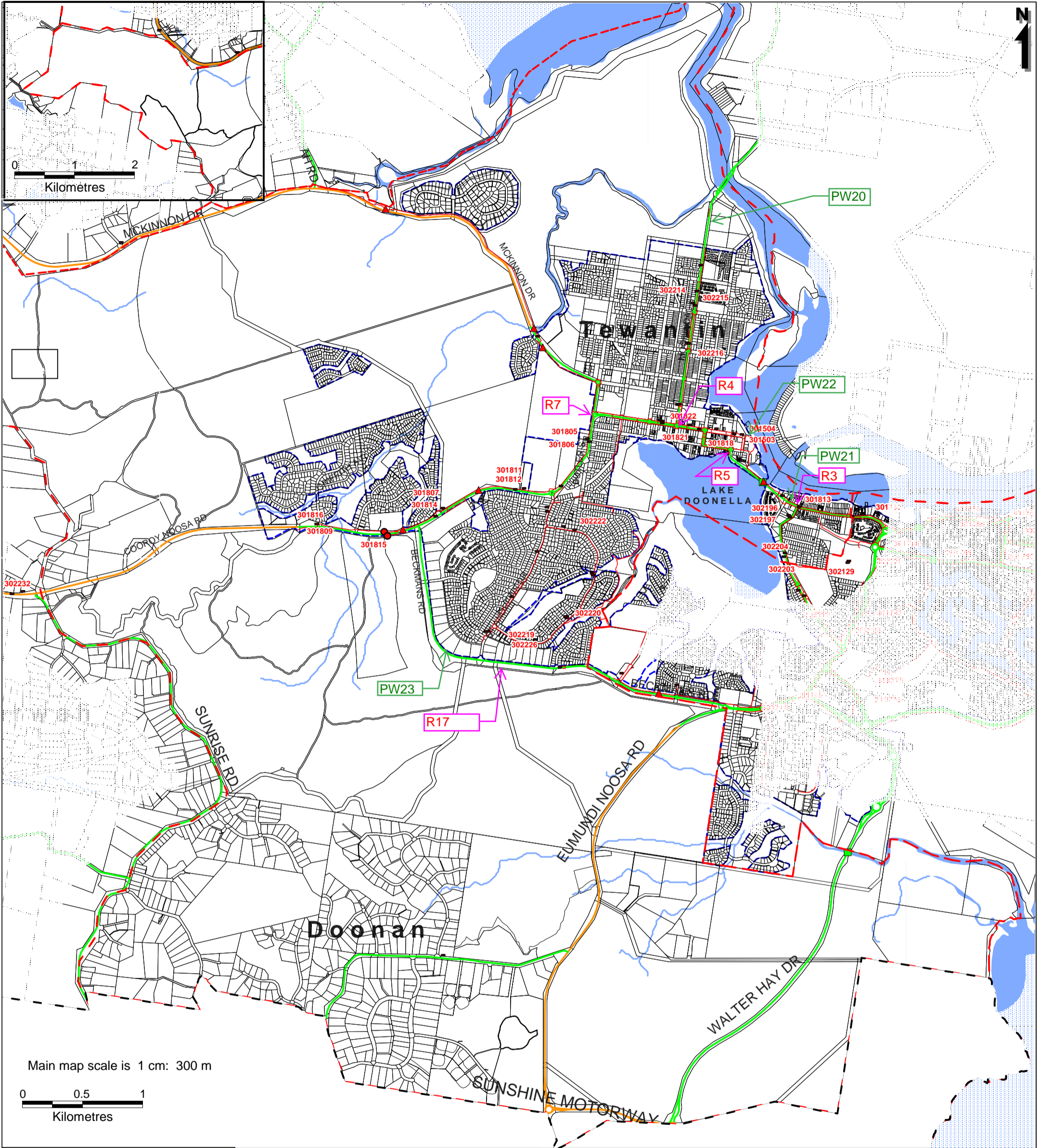


This map is a reproduction from Council's GIS, has a scale of accuracy of 1:25 000, although data on which it is based was gathered at mostly finer scales. Precise boundaries may need to be defined by site survey. Council Copyright Reserved.

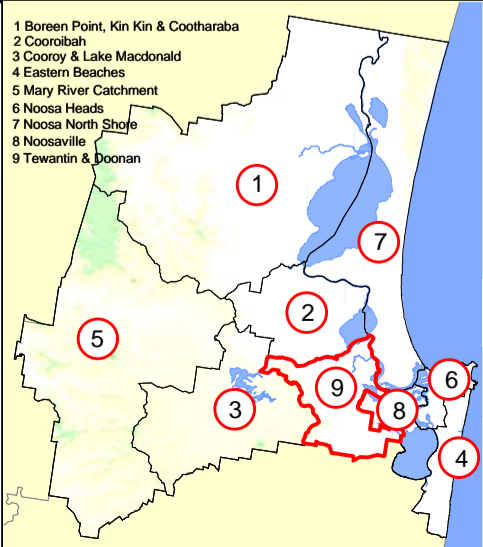
N:\07 Planning\Projects_Done_by_Ali_for_LUD\Transport

- Service Catchments (Locality Boundary)
- Property Boundaries
- Major Water Bodies
- PIA Boundaries
- Railway Line
- Noosa Shire Boundary
- Streams and Rivers
- X Road Project ID
- X Pathway Project ID
- Bus Stop HASTUS No

- #### Existing Trunk Infrastructure
- Trunk Bridges
 - ▲ Footbridge
 - Roadbridge
 - Underpass
 - Trunk Bus Stops
 -
 - Trunk Roads
 - Council
 - Main Roads
 - Trunk Paths
 -



Main map scale is 1 cm: 300 m



Tewanтин & Doonan LGIP-PFTI Transport Map 9



This map is a reproduction from Council's GIS. It has a scale of accuracy of 1:25 000, although data on which it is based was gathered at mostly finer scales. Precise boundaries may need to be defined by site survey.
Council Copyright Reserved.

N:\07 Planning\Projects_Done_by_Ali_for_LUD\Transport

- Service Catchments (Locality Boundary)
- Property Boundaries
- Major Water Bodies
- PIA Boundaries
- Railway Line
- Noosa Shire Boundary
- Streams and Rivers
- Inset
- X → Road Project ID
- X → Pathway Project ID
- Bus Stop HASTUS No

Existing Trunk Infrastructure

- Trunk Bridges
 - ▲ Footbridge
 - Roadbridge
 - Underpass
- Trunk Bus Stops
 -
- Trunk Roads
 - Council
 - Main Roads
- Trunk Paths
 -