

## Noosa Plan LGIP-PIA Key Map



0 2 4  
Kilometres

Scale 1cm : 1.3km

The map is a reproduction from Council's GIS, with a scale of accuracy of 1:25 000. Data on which it is based was gathered at mostly finer scales. Precise boundaries may need to be defined by site survey. Council Copyright Reserved.

Workspace Location: StrategyMap.wor

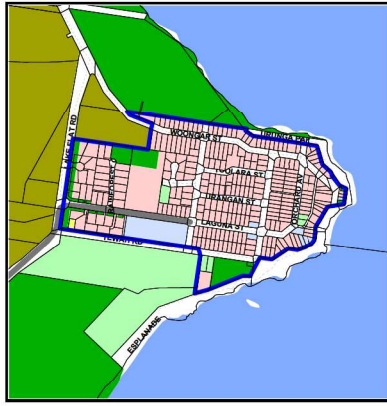
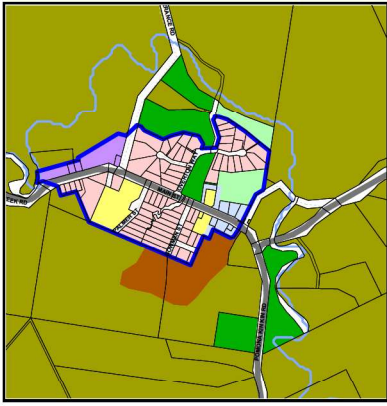
- Streams/Rivers
- PIA Boundaries
- Noosa Shire Boundaries
- Waterbodies
- Locality Boundaries

**Note:** The projection areas are the PIA's and Planning Scheme Localities

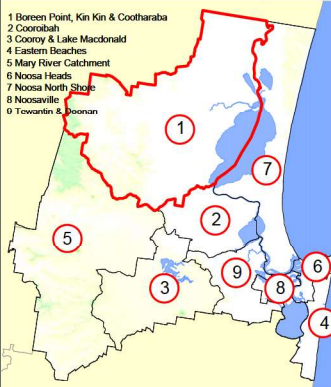
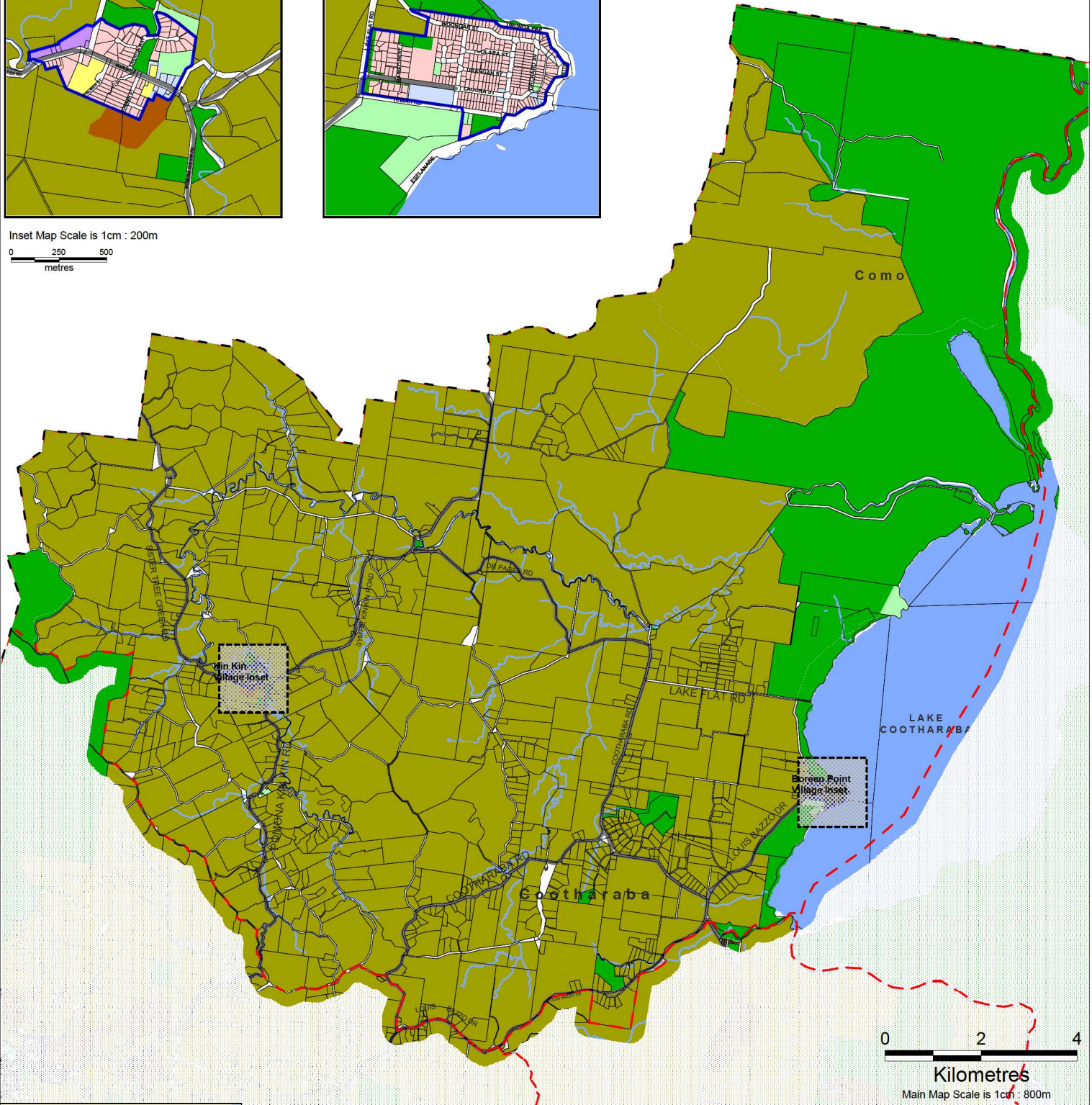
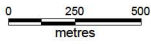


Kin Kin Village Inset

Boreen Point Village Inset



Inset Map Scale is 1cm : 200m



### Boreen Point, Kin Kin & Cootharaba LGIP-PIA Map 1

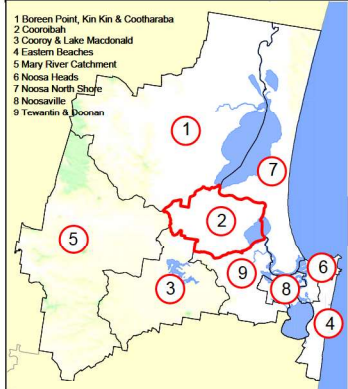
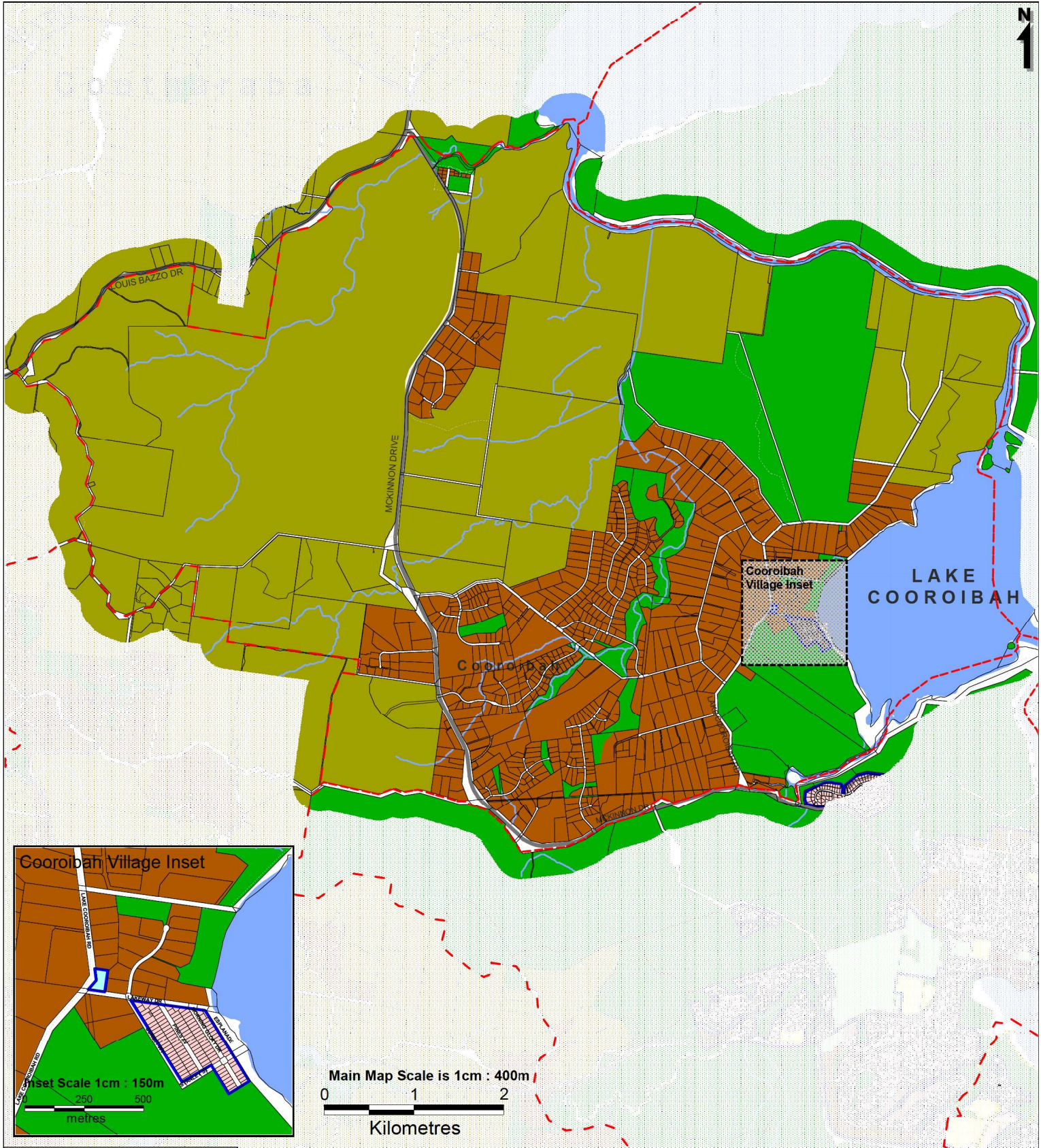
- Locality Boundaries
- Property Boundaries
- Major Road Network
- Major Water Bodies
- PIA Boundaries
- Railway Line
- Boundary
- Streams and Rivers
- Inset

- Detached Housing
- Village Mix
- Community Services
- Industry
- Rural Settlement
- Rural
- Open Space Recreation
- Open Space Conservation



This map is a reproduction from Council's GIS, has a scale of accuracy of 1:25 000, although data on which it is based was gathered at mostly finer scales. Precise boundaries may need to be defined by site survey.  
Council Copyright Reserved.





## Cooroibah LGIP-PIA Map 2

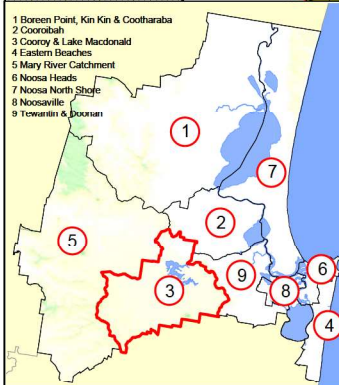
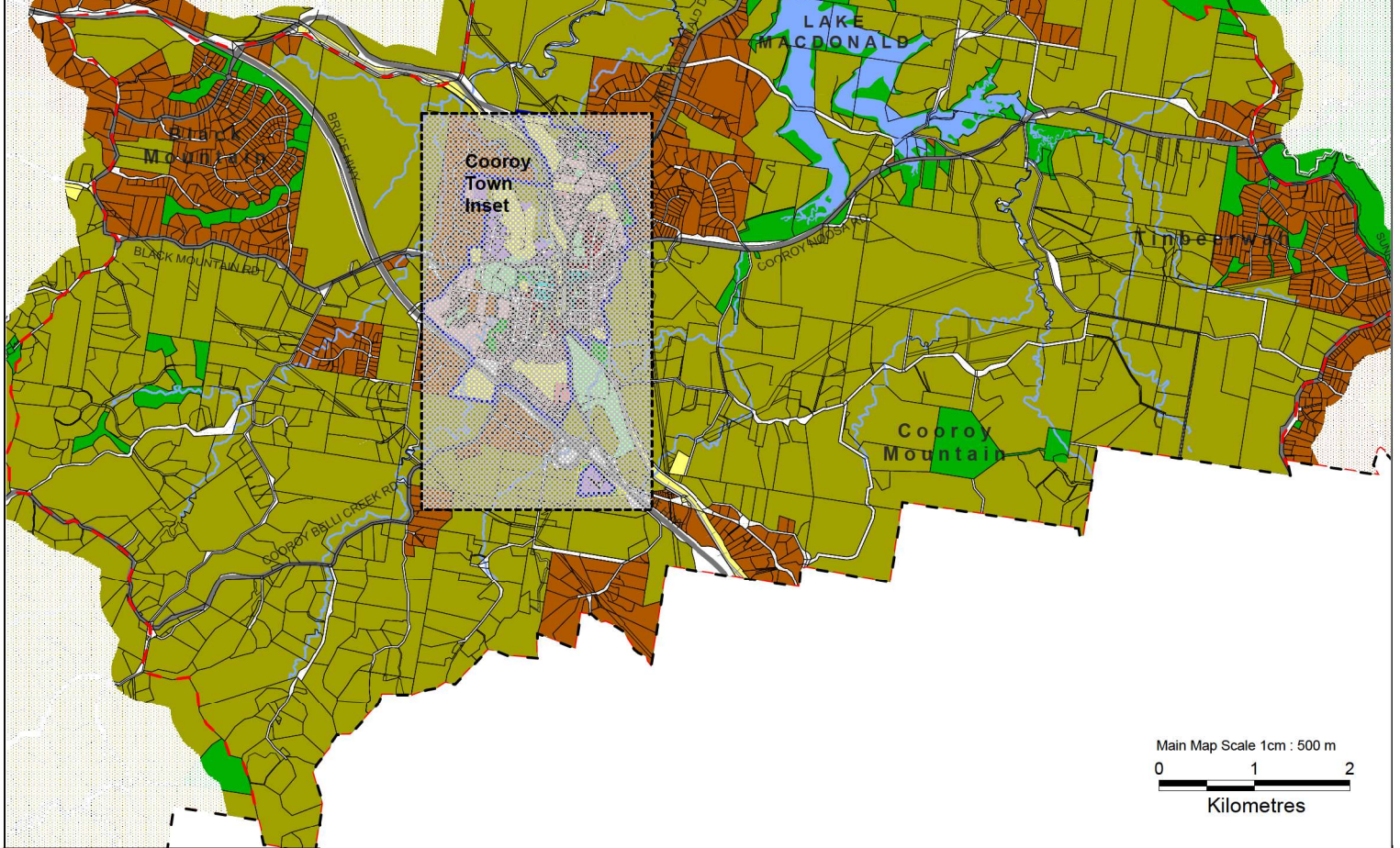
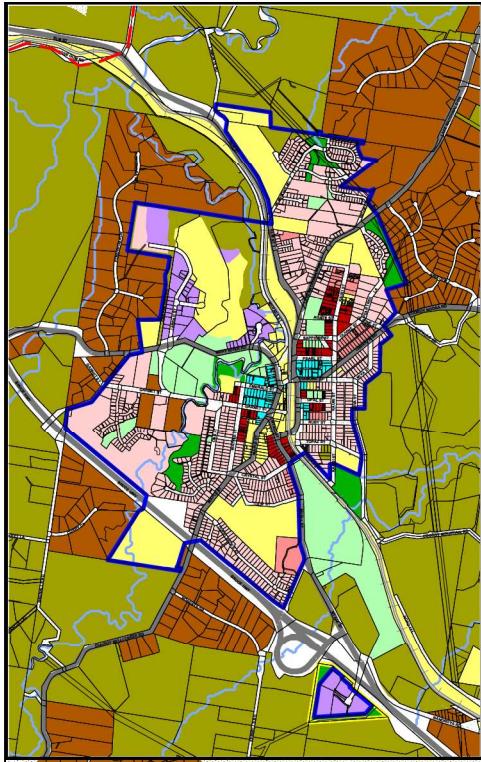


- - - Locality Boundaries
- - - Property Boundaries
- Major Water Bodies
- PIA Boundaries
- Major Road Network
- Railway Line
- Noosa Shire Boundary
- Streams and Rivers
- Inset
- Detached Housing
- Neighbourhood Centre
- Rural Settlement
- Rural
- Open Space Conservation

This map is a reproduction from Council's GIS, has a scale of accuracy of 1:25,000, although data on which it is based was gathered at mostly finer scales. Precise boundaries may need to be defined by site survey.  
Council Copyright Reserved.

Workspace Location: N:\GIS\Projects\131023\_The\_Noosa\_Plan\Maps\Data\Planreview2014\Zone\_Cooroibah.wor





### Cooroy & Lake Macdonald LGIP-PIA Map 3

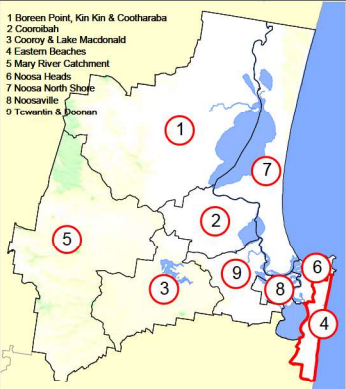
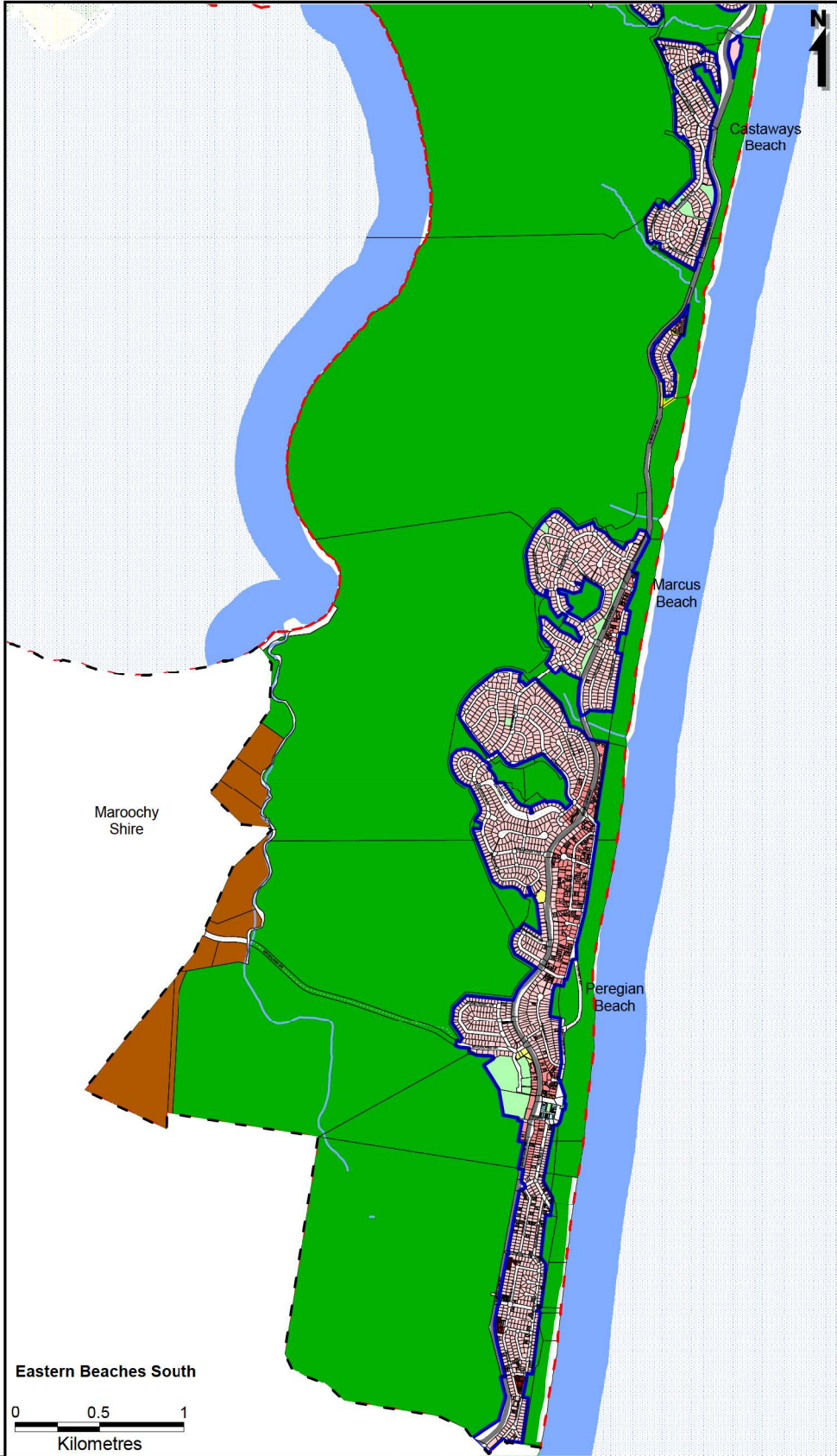
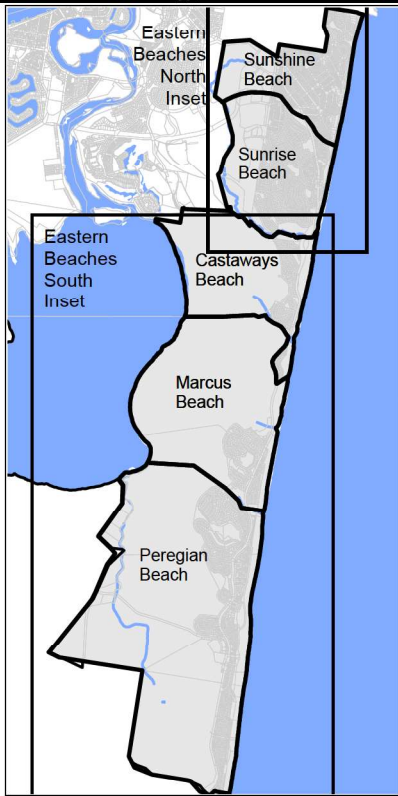
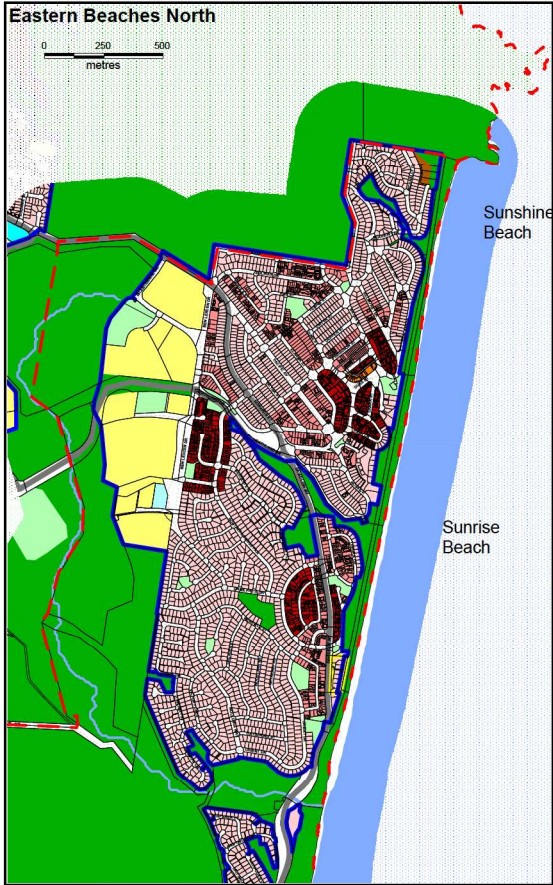


This map is a reproduction from Council's GIS, has a scale of accuracy of 1:25 000, although data on which it is based was gathered at mostly finer scales. Precise boundaries may need to be defined by site survey.  
Council Copyright Reserved.

- - - Locality Boundaries
- - - Property Boundaries
- Noosa Shire Boundary
- Major Water Bodies
- PIA Boundaries
- Major Road Network
- Railway Line
- - - Boundary
- Streams and Rivers
- Inset

- Detached Housing
- Semi-Attached Housing
- Attached Housing
- Business Centre
- Community Services
- Industry
- Rural Settlement
- Rural
- Open Space Recreation
- Open Space Conservation





## Eastern Beaches LGIP-PIA Map 4

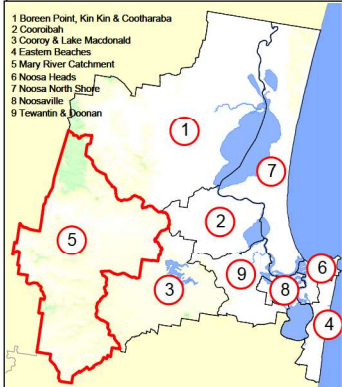
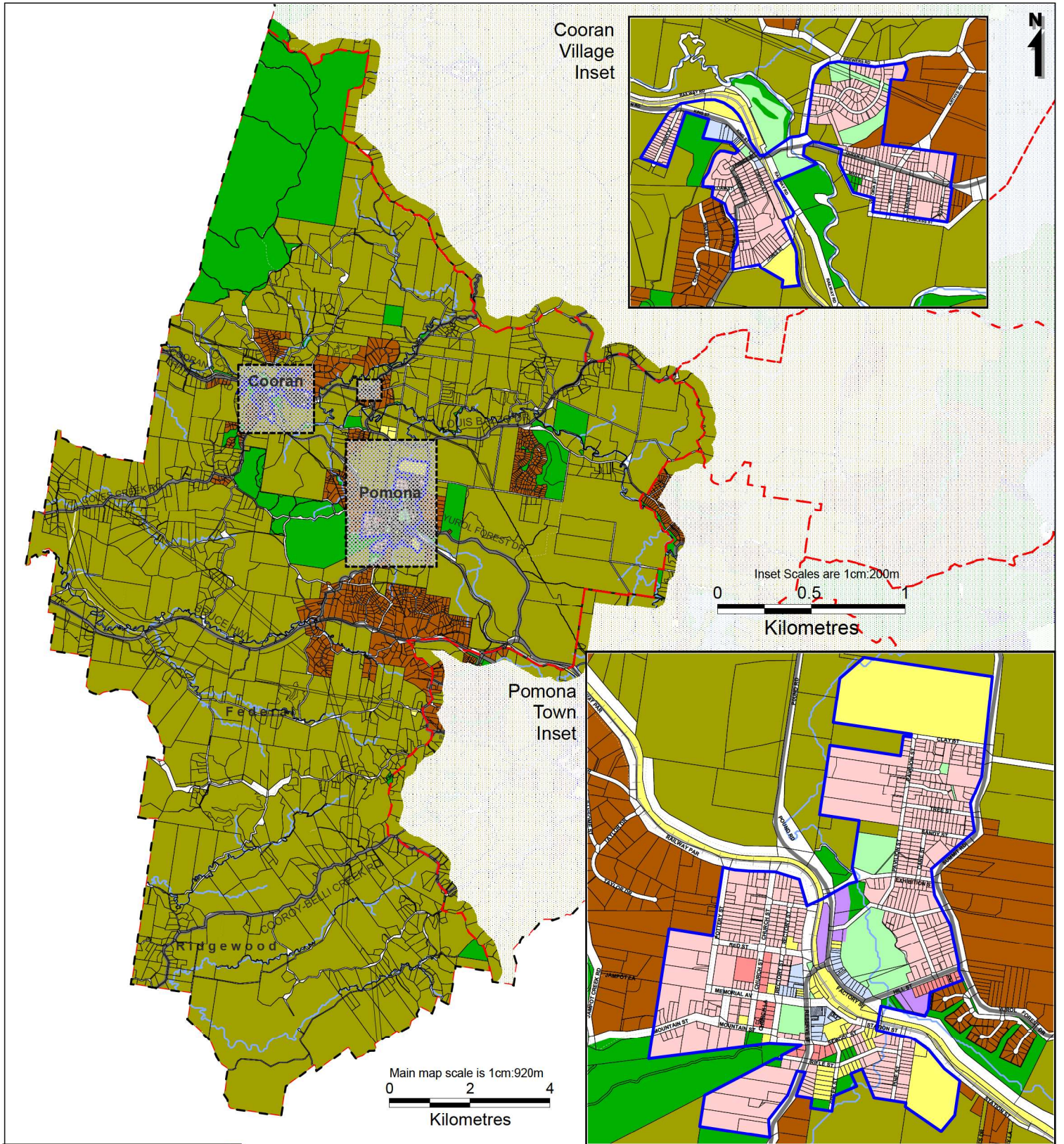


- |                        |                    |
|------------------------|--------------------|
| Locality Boundaries    | Major Road Network |
| Property Boundaries    | Railway Line       |
| Noosa Shire Boundaries | Boundary           |
| Major Water Bodies     | Streams and Rivers |
| PIA Boundaries         | Inset              |

- |                         |
|-------------------------|
| Detached Housing        |
| Semi-Attached Housing   |
| Attached Housing        |
| Visitor Mixed Use       |
| Neighbourhood Centre    |
| Community Services      |
| Rural Settlement        |
| Open Space Recreation   |
| Open Space Conservation |

This map is a reproduction from Council's GIS, has a scale of accuracy of 1:25 000, although data on which it is based was gathered at mostly finer scales. Precise boundaries may need to be defined by site survey. Council Copyright Reserved.





## Mary River Catchment LGIP-PIA Map 5



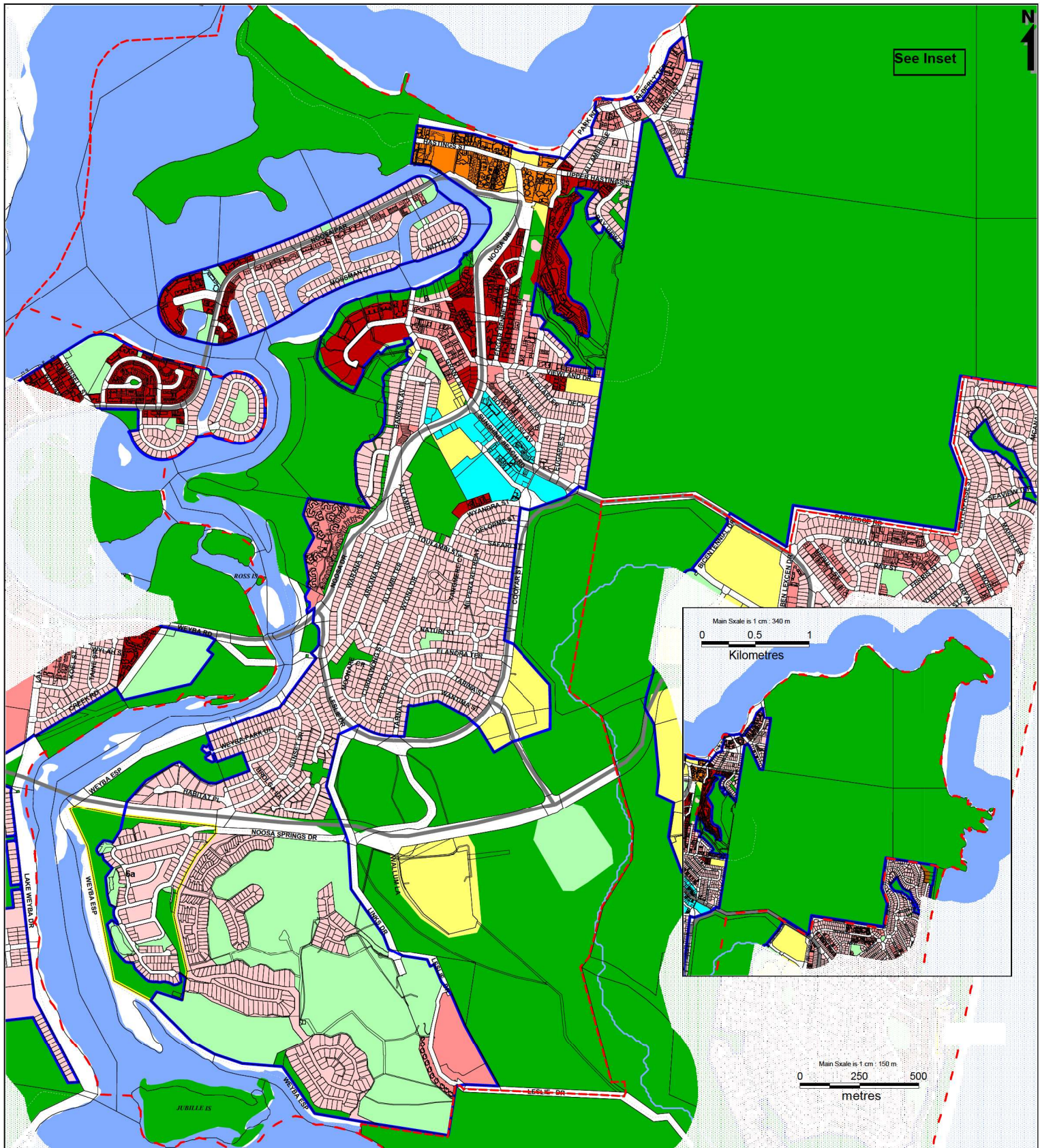
This map is a reproduction from Council's GIS, has a scale of accuracy of 1:25 000, although data on which it is based was gathered at mostly finer scales. Precise boundaries may need to be defined by site survey.  
Council Copyright Reserved

- Locality Boundaries
- Property Boundaries
- Major Water Bodies
- PIA Boundaries

- Major Road Network
- Railway Line
- Noosa Shire Boundary
- Streams and Rivers
- Inset

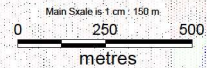
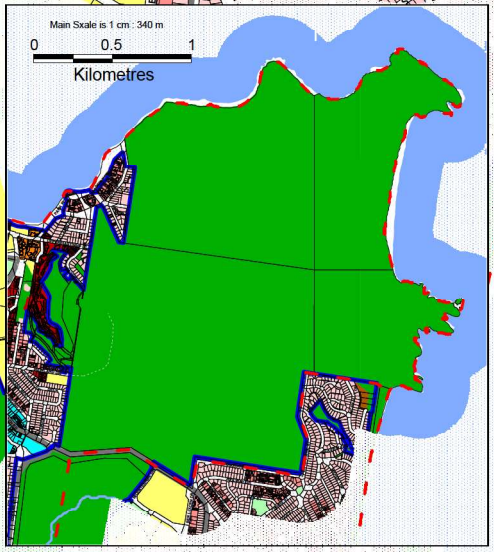
- Attached Housing
- Business Centre
- Community Services
- Detached Housing
- Industry
- Neighbourhood Centre
- Open Space Conservation
- Open Space Recreation
- Rural
- Rural Settlement
- Semi-Attached Housing
- Shire Business Centre
- Village Mix
- Visitor Mixed Use





See Inset

N  
1



## Noosa Heads LGIP-PIA Map 6

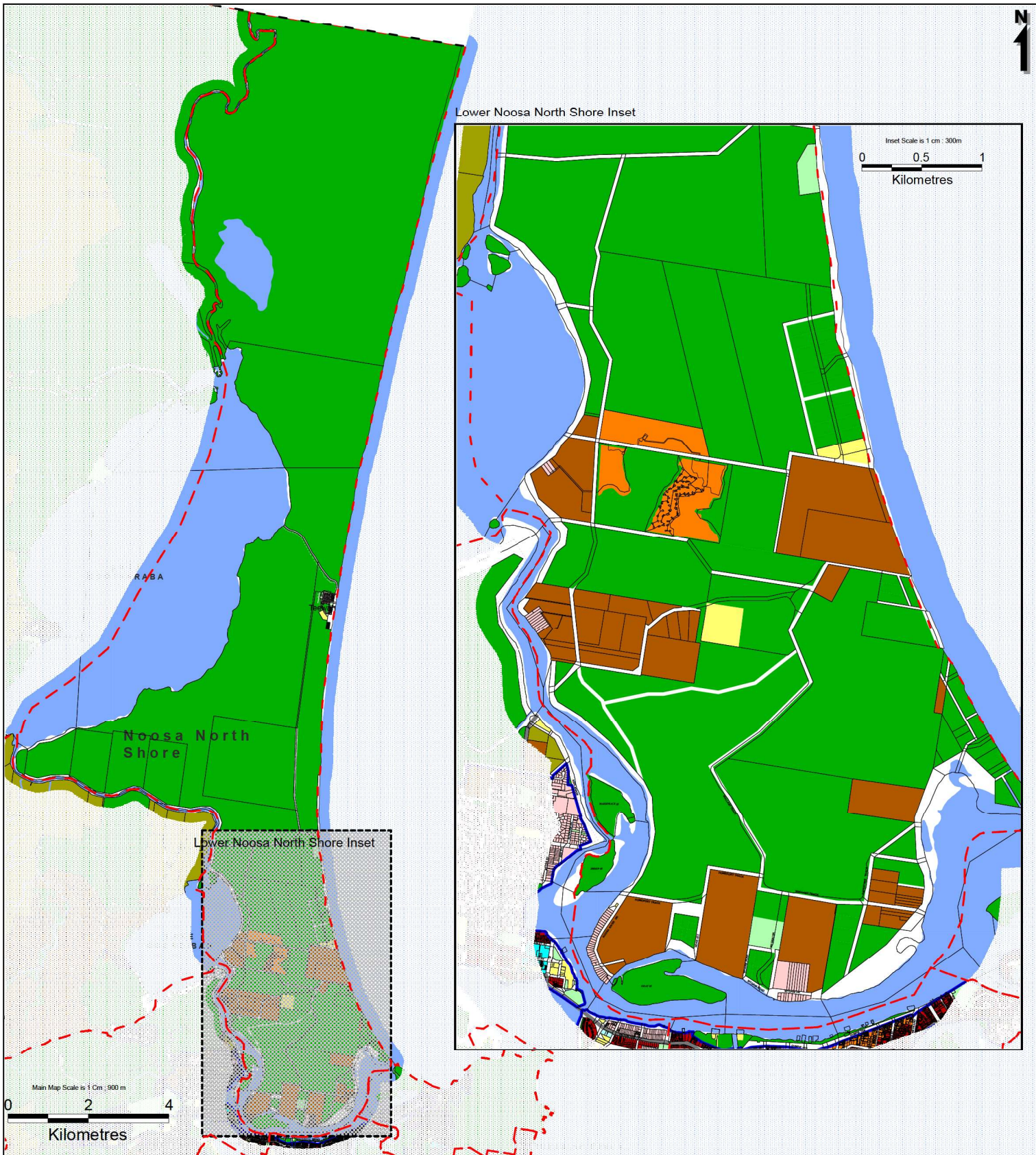


- Locality Boundaries
- Property Boundaries
- Major Water Bodies
- PIA Boundaries
- Major Road Network
- Railway Line
- Noosa Shire Boundary
- Streams and Rivers
- Inset
- Detached Housing
- Semi-Attached Housing
- Attached Housing
- Visitor Mixed Use
- Neighbourhood Centre
- Business Centre
- Community Services
- Open Space Recreation
- Open Space Conservation

This map is a reproduction from Council's GIS, has a scale of accuracy of 1:25,000, although data on which it is based was gathered at mostly finer scales. Precise boundaries may need to be defined by site survey.  
Council Copyright Reserved.

Workspace Location: J:\GIS\Projects\131023\_The\_Noosa\_Plan\Maps\Data\Planreview2014\Zone\_NoosaHeads.wor





## Noosa North Shore LGIP-PIA Map 7



This map is a reproduction from Council's GIS, has a scale of accuracy of 1:25,000, although data on which it is based was gathered at mostly finer scales. Precise boundaries may need to be defined by site survey. Council Copyright Reserved.

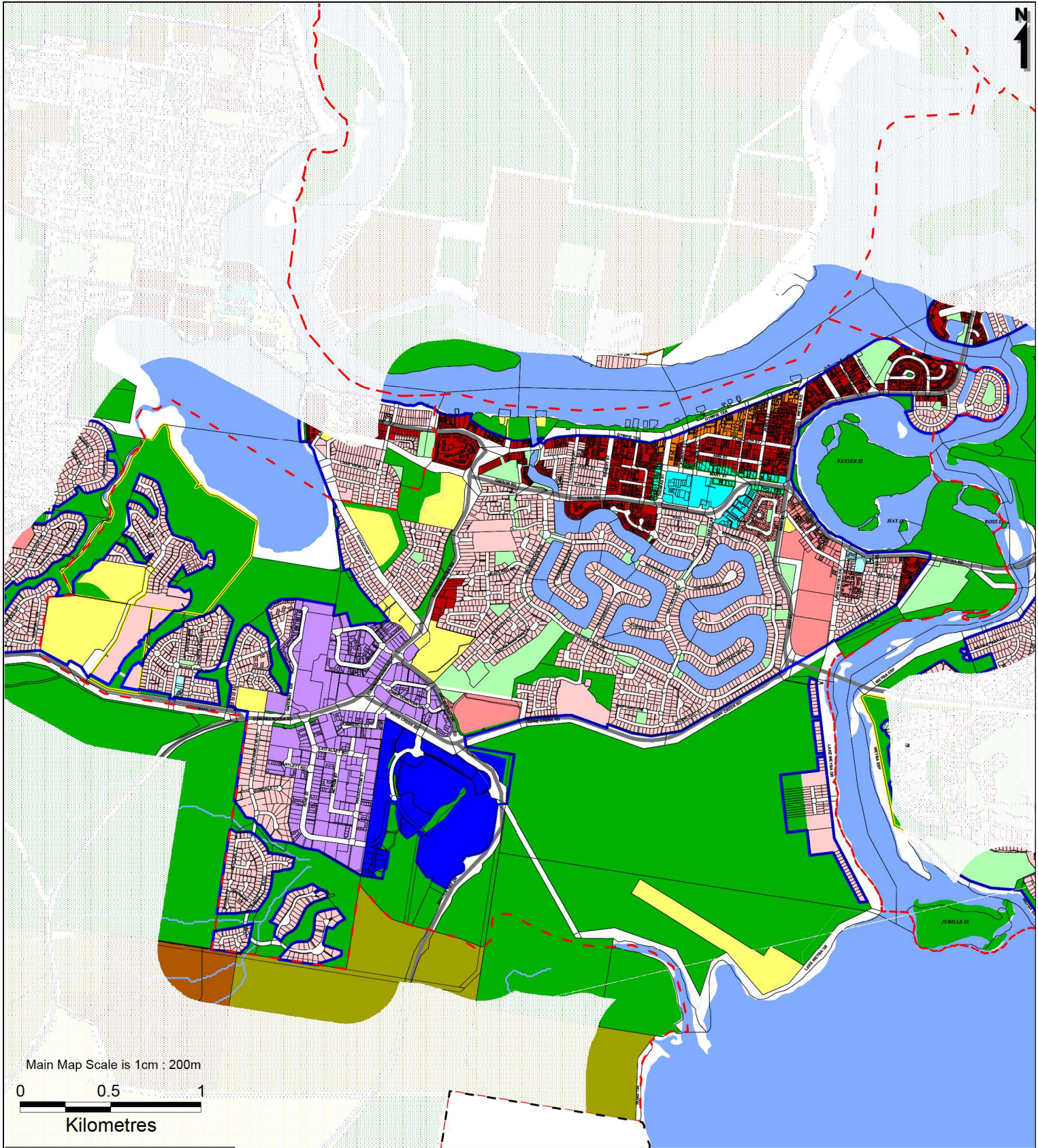
- Locality Boundaries
- Property Boundaries
- Major Water Bodies
- PIA Boundaries

- Major Road Network
- Railway Line
- Noosa Shire Boundary
- Streams and Rivers
- Inset

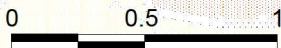
Note: The PIA does not extend to this locality

- Attached Housing
- Business Centre
- Community Services
- Detached Housing
- Industry
- Neighbourhood Centre
- Open Space Conservation
- Open Space Recreation
- Rural
- Rural Settlement
- Semi-Attached Housing
- Shire Business Centre
- Village Mix
- Visitor Mixed Use

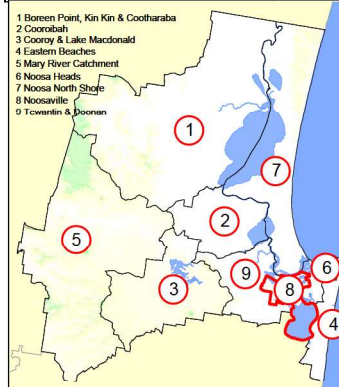




Main Map Scale is 1cm : 200m



Kilometres



## Noosaville LGIP-PIA Map 8



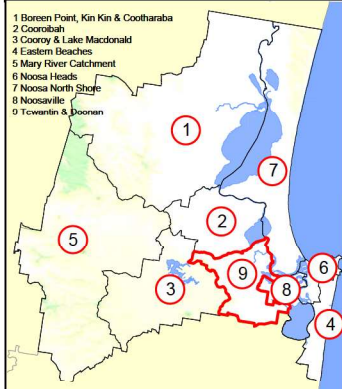
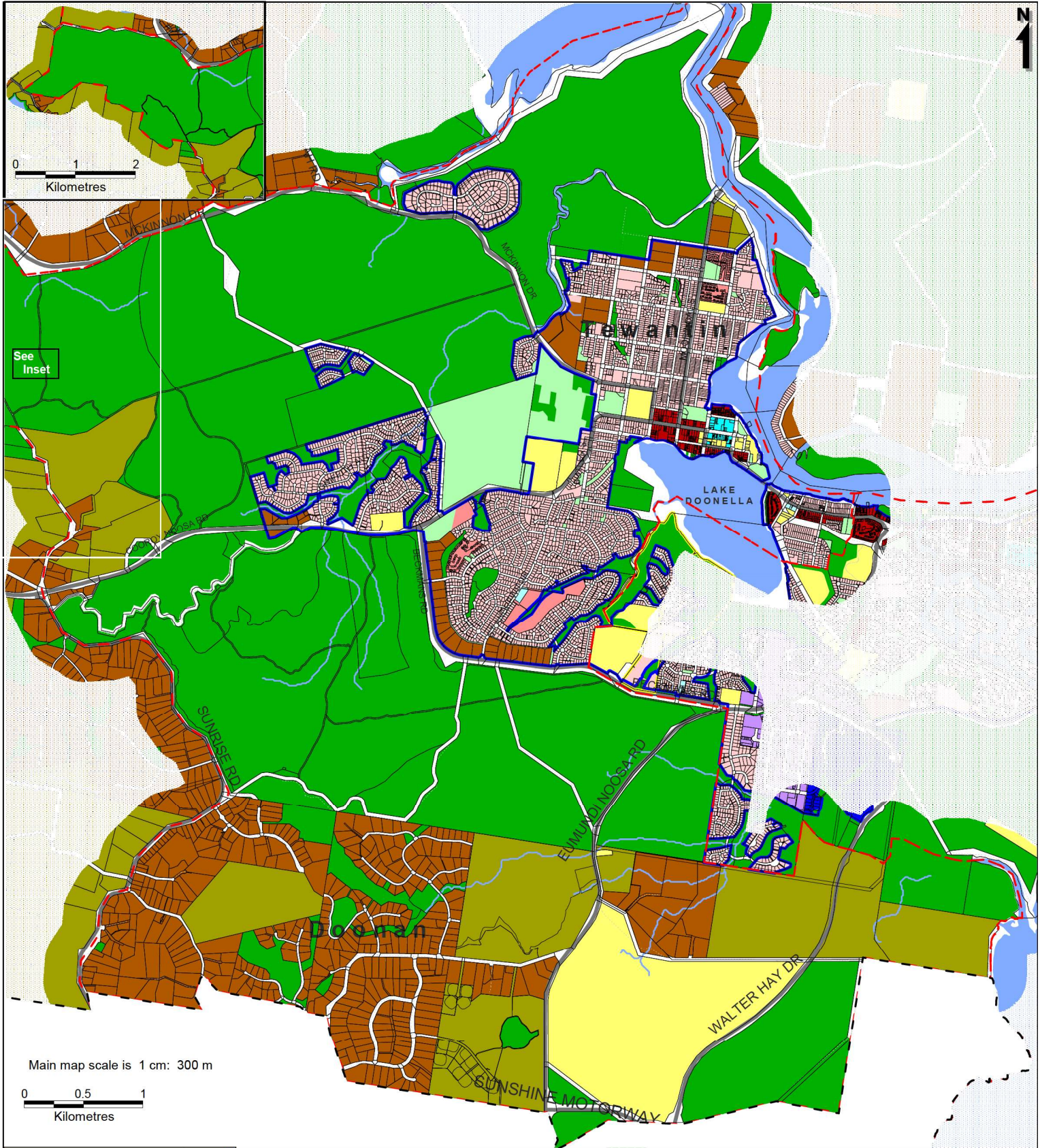
This map is a reproduction from Council's GIS, has a scale of accuracy of 1:25,000, although data on which it is based was gathered at mostly finer scales. Precise boundaries may need to be defined by site survey.  
Council Copyright Reserved.

- Locality Boundaries
- Property Boundaries
- Major Water Bodies
- PIA Boundaries

- Major Road Network
- Railway Line
- Noosa Shire Boundary
- Streams and Rivers

- Detached Housing
- Semi-Attached Housing
- Attached Housing
- Visitor Mixed Use
- Neighbourhood Centre
- Business Centre
- Shire Business Centre
- Community Services
- Industry
- Rural
- Open Space Recreation
- Open Space Conservation





## Tewantin & Doonan LGIP-PIA Map 9



This map is a reproduction from Council's GIS, has a scale of accuracy of 1:25 000, although data on which it is based was gathered at mostly finer scales. Precise boundaries may need to be defined by site survey.  
Council Copyright Reserved.

- |  |   |   |
|--|---|---|
| <ul style="list-style-type: none"> <li><span style="border-bottom: 1px dashed red; width: 20px; display: inline-block;"></span> Locality Boundaries</li> <li><span style="border-bottom: 1px dashed red; width: 20px; display: inline-block;"></span> Property Boundaries</li> <li><span style="border: 1px solid black; width: 20px; height: 10px; display: inline-block;"></span> Major Water Bodies</li> <li><span style="background-color: lightblue; width: 20px; height: 10px; display: inline-block;"></span> PIA Boundaries</li> </ul> | <ul style="list-style-type: none"> <li><span style="border-bottom: 2px solid black; width: 20px; display: inline-block;"></span> Major Road Network</li> <li><span style="border-bottom: 2px solid black; width: 20px; display: inline-block;"></span> Railway Line</li> <li><span style="border-bottom: 2px dashed black; width: 20px; display: inline-block;"></span> Noosa Shire Boundary</li> <li><span style="border-bottom: 1px solid blue; width: 20px; display: inline-block;"></span> Streams and Rivers</li> <li><span style="background-color: gray; width: 20px; height: 10px; display: inline-block;"></span> Inset</li> </ul> | <ul style="list-style-type: none"> <li><span style="background-color: #f08080; width: 15px; height: 10px; display: inline-block;"></span> Detached Housing</li> <li><span style="background-color: #e06666; width: 15px; height: 10px; display: inline-block;"></span> Semi-Attached Housing</li> <li><span style="background-color: #d9534f; width: 15px; height: 10px; display: inline-block;"></span> Attached Housing</li> <li><span style="background-color: #cfe2f3; width: 15px; height: 10px; display: inline-block;"></span> Neighbourhood Centre</li> <li><span style="background-color: #ffff00; width: 15px; height: 10px; display: inline-block;"></span> Business Centre</li> <li><span style="background-color: #99cc99; width: 15px; height: 10px; display: inline-block;"></span> Community Services</li> <li><span style="background-color: #808080; width: 15px; height: 10px; display: inline-block;"></span> Rural Settlement</li> <li><span style="background-color: #6aa84f; width: 15px; height: 10px; display: inline-block;"></span> Rural</li> <li><span style="background-color: #4daf4a; width: 15px; height: 10px; display: inline-block;"></span> Open Space Recreation</li> <li><span style="background-color: #2ca02c; width: 15px; height: 10px; display: inline-block;"></span> Open Space Conservation</li> </ul> |
|--|---|---|