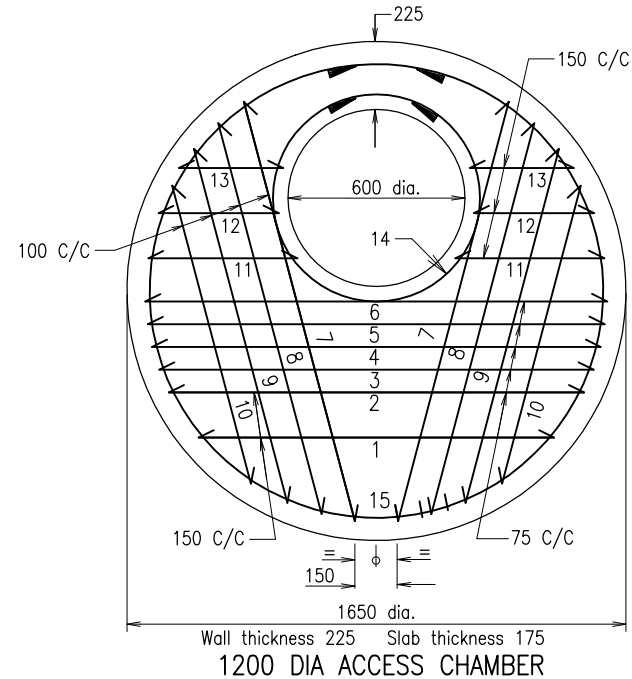


REINFORCEMENT - 1050 DIA. ACCESS CHAMBER

BAR No.	SHAPE	A	OVERALL LENGTH	No. OFF	TOTAL LENGTH
1	C	1130	1370	1	1370
2	C	1230	1470	1	1470
3	C	1300	1540	1	1540
4	C	1350	1590	1	1590
5	C	1380	1620	1	1620
6	C	1275	1515	2	3030
7	C	1165	1405	2	2810
8	C	1005	1245	2	2490
9	C	760	1000	2	2000
10	C	420	660	2	1320
11	C	330	570	2	1140
12	C	280	520	2	1040
13	C	835	1075	1	1075
14	P	765	2555	1	2555
15	P	1365	4440	1	4440

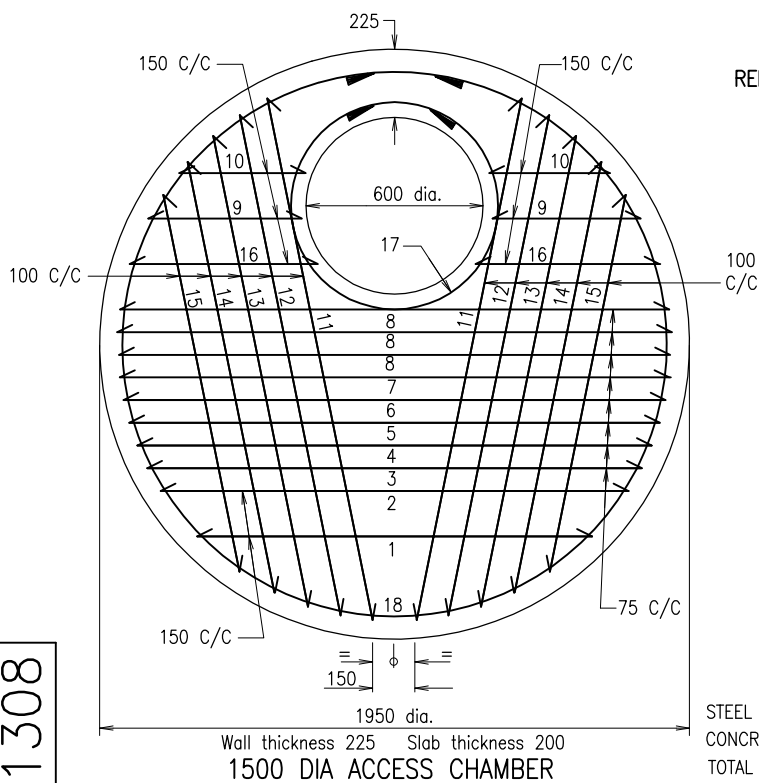
STEEL MASS: 49kg (including mesh) TOTAL 29490
 CONCRETE: 0.26m³
 TOTAL MASS: 666kg



REINFORCEMENT - 1200 DIA. ACCESS CHAMBER

BAR No.	SHAPE	A	OVERALL LENGTH	No. OFF	TOTAL LENGTH
1	C	1210	1450	1	1450
2	C	1400	1640	1	1640
3	C	1460	1700	1	1700
4	C	1500	1740	1	1740
5	C	1530	1770	1	1770
6	C	1540	1780	1	1780
7	C	1450	1690	2	3380
8	C	1370	1610	2	3220
9	C	1240	1480	2	2960
10	C	1060	1300	2	2600
11	C	480	720	2	1440
12	C	385	625	2	1250
13	C	320	560	2	1120
14	P	765	2555	1	2555
15	P	1515	4915	1	4915

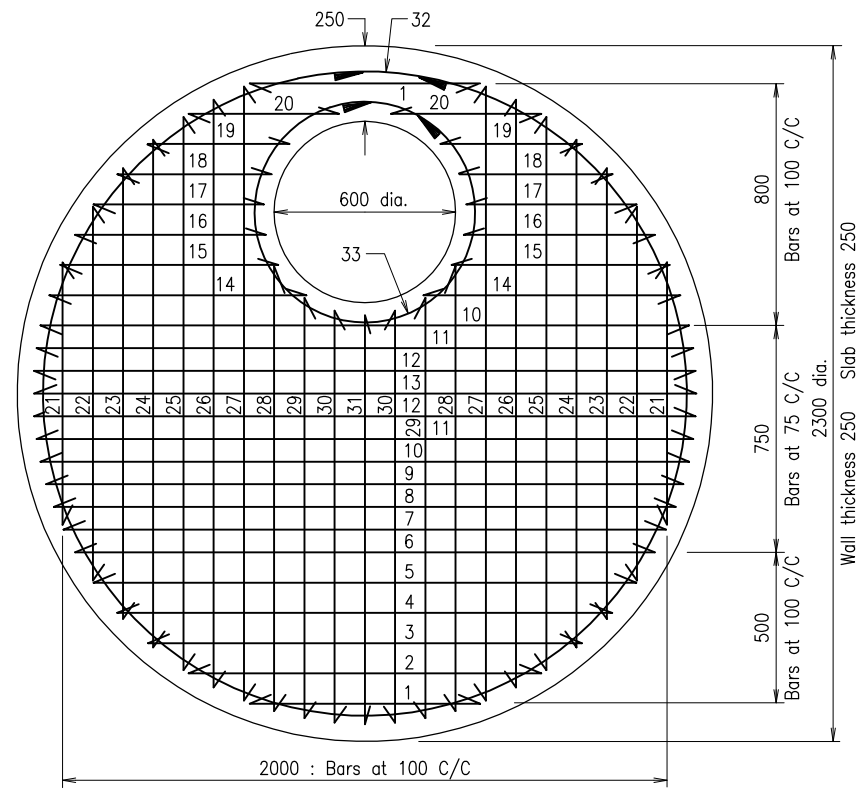
STEEL MASS: 57kg (including mesh) TOTAL 33520
 CONCRETE: 0.33m³
 TOTAL MASS: 845kg



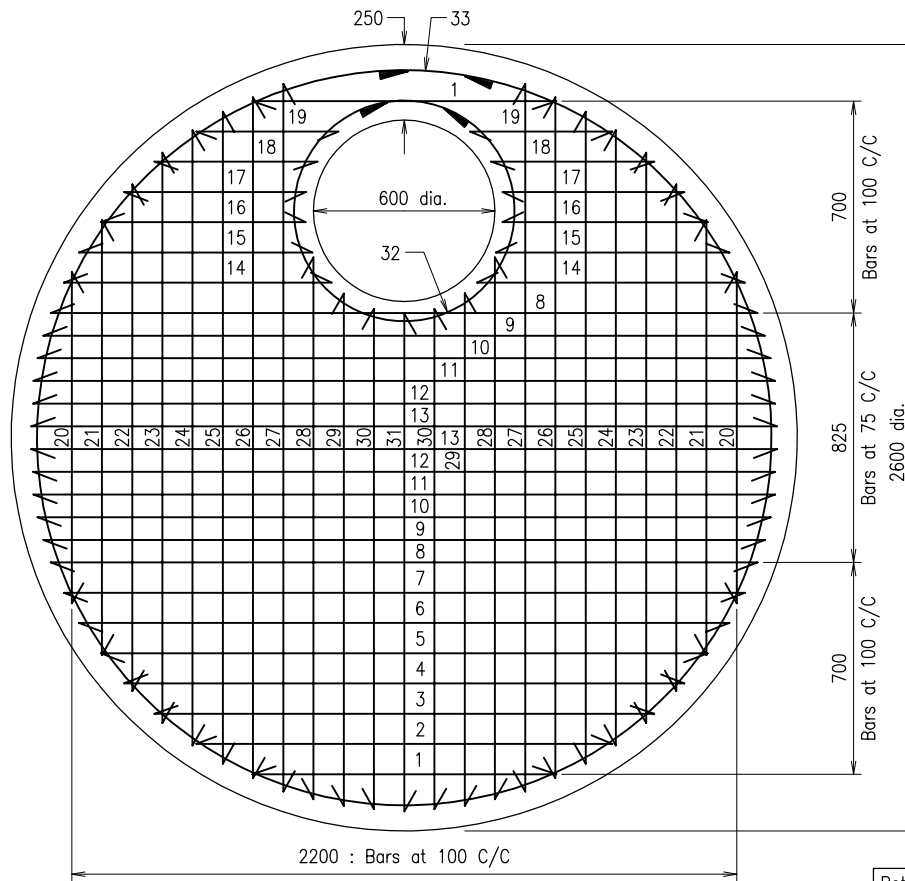
REINFORCEMENT - 1500 DIA. ACCESS CHAMBER

BAR No.	SHAPE	A	OVERALL LENGTH	No. OFF	TOTAL LENGTH
1	C	1340	1580	1	1580
2	C	1575	1815	1	1815
3	C	1655	1895	1	1895
4	C	1725	1965	1	1965
5	C	1775	2015	1	2015
6	C	1810	2050	1	2050
7	C	1835	2075	1	2075
8	C	1850	2090	3	6270
9	C	480	720	2	1440
10	C	400	640	2	1280
11	C	1780	2020	2	4040
12	C	1710	1950	2	3900
13	C	1610	1850	2	3700
14	C	1480	1720	2	3440
15	C	1310	1550	2	3100
16	C	595	835	2	1670
17	P	765	2555	1	2555
18	P	1815	5855	1	5855

STEEL MASS: 90kg (including mesh) TOTAL 50645
 CONCRETE: 0.54m³
 TOTAL MASS: 1382kg



1800 DIA. ACCESS CHAMBER



2100 DIA. ACCESS CHAMBER

REINFORCEMENT - 1800 DIA. ACCESS CHAMBER

BAR No.	SHAPE	A	OVERALL LENGTH	No. OFF	TOTAL LENGTH
1	C	800	1040	2	2080
2	C	1190	1430	1	1430
3	C	1455	1695	1	1695
4	C	1655	1895	1	1895
5	C	1810	2050	1	2050
6	C	1935	2175	1	2175
7	C	2010	2250	1	2250
8	C	2070	2310	1	2310
9	C	2120	2360	1	2360
10	C	2155	2395	2	4790
11	C	2180	2420	2	4840
12	C	2195	2435	2	4870
13	C	2200	2440	1	2440
14	C	835	1075	2	2150
15	C	710	950	2	1900
16	C	625	865	2	1730

STEEL MASS: 165kg (including mesh)
 CONCRETE: 0.97m³
 TOTAL MASS: 2483kg

BAR No.	SHAPE	A	OVERALL LENGTH	No. OFF	TOTAL LENGTH
17	C	555	795	2	1590
18	C	500	740	2	1480
19	C	460	700	2	1400
20	C	465	705	2	1410
21	C	915	1155	2	2310
22	C	1265	1505	2	3010
23	C	1510	1750	2	3500
24	C	1700	1940	2	3880
25	C	1845	2085	2	4170
26	C	1960	2200	2	4400
27	C	2050	2290	2	4580
28	C	1480	1720	2	3440
29	C	1395	1635	2	3270
30	C	1360	1600	2	3200
31	C	1350	1590	1	3180
32	P	765	2555	1	2555
33	P	2165	6955	1	6955

TOTAL 95295

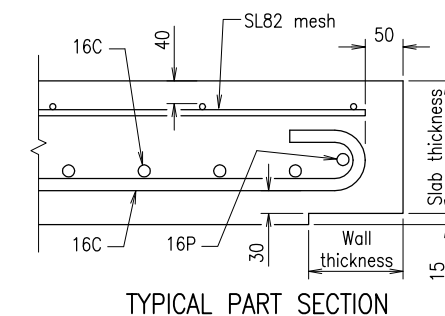
REINFORCEMENT - 2100 DIA. ACCESS CHAMBER

BAR No.	SHAPE	A	OVERALL LENGTH	No. OFF	TOTAL LENGTH
1	C	1140	1380	2	2760
2	C	1470	1710	1	1710
3	C	1710	1950	1	1950
4	C	1900	2140	1	2140
5	C	2055	2295	1	2295
6	C	2180	2420	1	2420
7	C	2280	2520	1	2520
8	C	2360	2600	2	5200
9	C	2410	2650	2	5300
10	C	2445	2685	2	5370
11	C	2470	2710	2	5420
12	C	2490	2730	2	5460
13	C	2500	2740	2	5480
14	C	885	1125	2	2250
15	C	770	1010	2	2020
16	C	680	920	2	1840

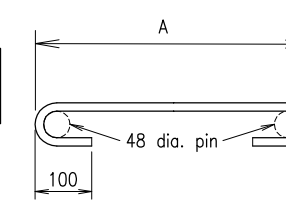
STEEL MASS: 205kg (including mesh)
 CONCRETE: 1.26m³
 TOTAL MASS: 3226kg

BAR No.	SHAPE	A	OVERALL LENGTH	No. OFF	TOTAL LENGTH
17	C	605	845	2	1690
18	C	545	785	2	1570
19	C	500	740	2	1480
20	C	1190	1430	2	2860
21	C	1500	1740	2	3480
22	C	1735	1975	2	3950
23	C	1920	2160	2	4320
24	C	2070	2310	2	4620
25	C	2195	2435	2	4870
26	C	2290	2530	2	5060
27	C	2370	2610	2	5220
28	C	1785	2025	2	4050
29	C	1700	1940	2	3880
30	C	1660	1900	2	3800
31	C	1650	1890	1	3780
32	P	765	2555	1	2555
33	P	2465	7900	1	7900

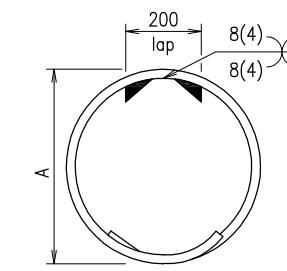
TOTAL 119020



TYPICAL PART SECTION



DETAIL - 16C BAR



DETAIL - 16P BAR

NOTES

- CONCRETE CLASS to be S40/20.
- REINFORCEMENT IN ROOF SLABS: Cover to reinforcing steel to be 40mm unless shown otherwise. Exposure classification B1. Reinforcing steel to be in accordance with AS/NZS 4671. Deformed bars Grade D500N. All reinforcing steel to be ACRS certified.
- FOR LIFTING ANCHOR locations and details, refer Standard Drawing No 1307.
- ROOF DESIGNED for W7 loading (impact factor 100 percent, ultimate live load factor 1.5).
- SLAB THICKNESS does not include 15mm rebate, as shown in Standard Drawing No 1307.
- WELDING SYMBOLS to AS 1101.3. Reinforcing Steel. All welds, except location tack welds, to be SP category. Tack welds for location purposes to AS/NZS 1554.3 Clauses 3.3.1 and 3.3.2. Welding consumables to be E4816, E4818 or W50X. Welding shall not be carried out within 75 of any bent portion of the bar.
- DIMENSIONS are in millimetres unless shown otherwise.

ASSOCIATED DOCUMENTS:
 Department of Main Roads Manual of Standard Drawings Roads
 Department of Main Roads Manual of Standard Specifications Roads
 REFERENCED DOCUMENTS:
 Standard Drawings:
 1307 Access Chamber - Details 1050 to 2100 dia.
 Standard Specifications:
 MRS11.03 - Drainage, Retaining Structures and Protective Treatments

ACCESS CHAMBER			
ROOF SLABS 1050 TO 2100 DIA.		Size A3	Drawing No 1308
		Scales as shown	Date 3/07
		A	B