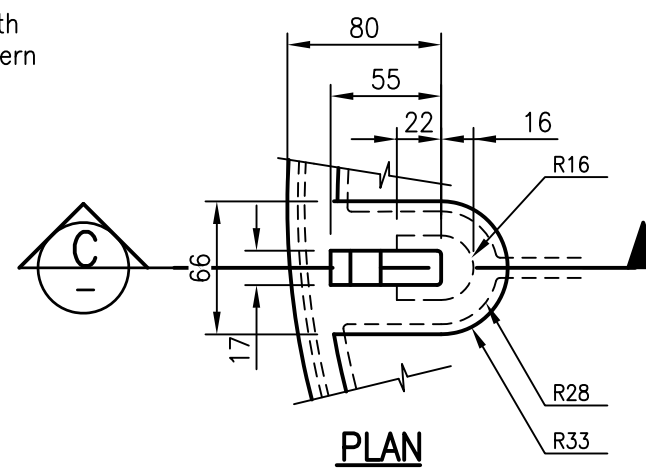
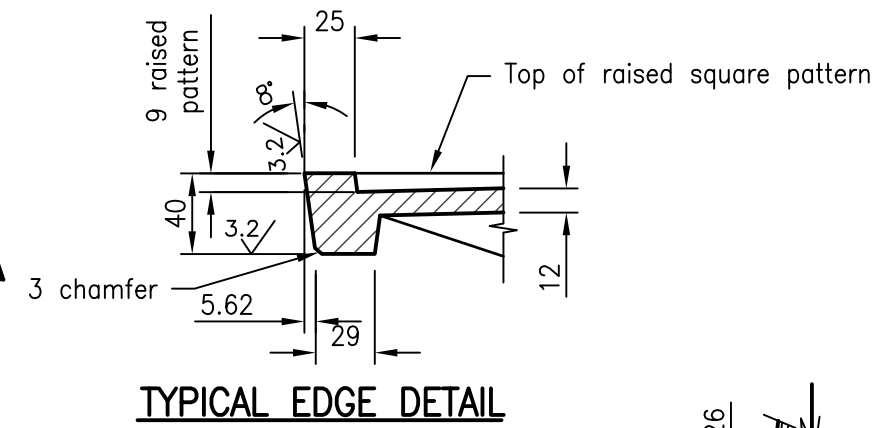


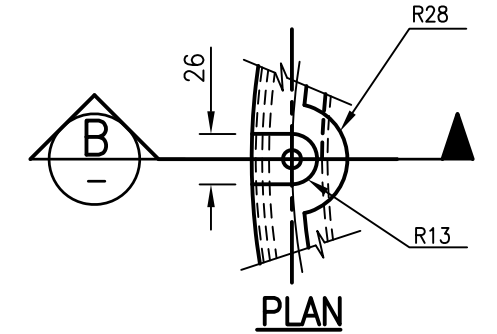
PLAN



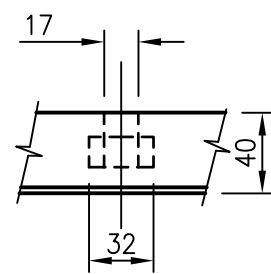
PLAN



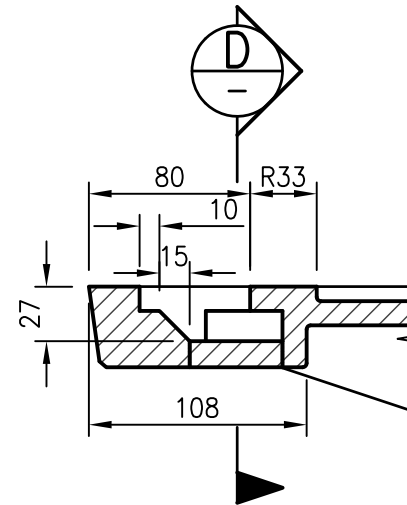
TYPICAL EDGE DETAIL



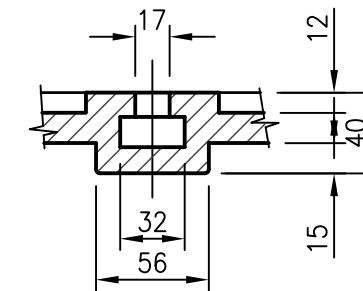
PLAN



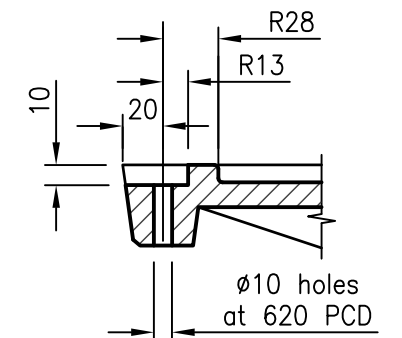
END ELEVATION



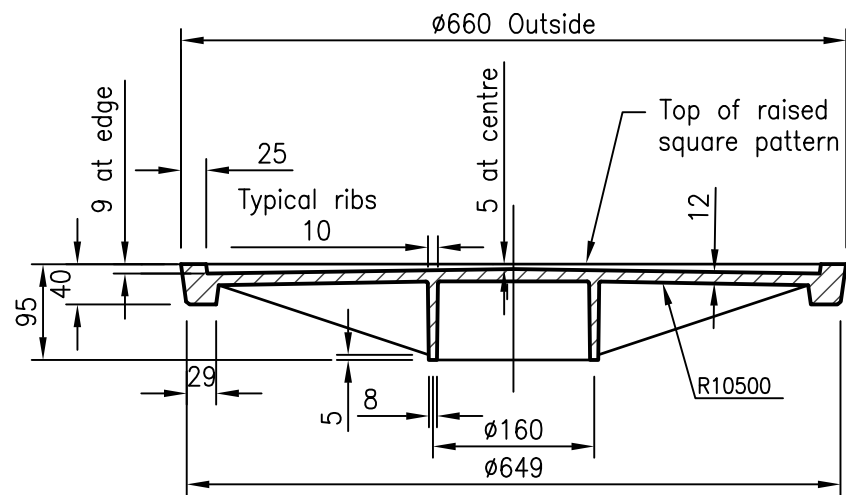
SECTION C



SECTION D



SECTION B



SECTION A

Riser will be required for roadway cover

LIFTING KEYHOLE DETAIL

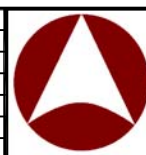
BOLTING BOSS DETAIL

NOTES:

- All edges to be square.
- Casting to be free of burrs and pits.
- Material  
Ductile cast iron  
Tensile Strength: 600-3 (AS 1831)  
Hardness: 145-185 (HB)  
Design Load = 210kN (AS 3996)  
Mass = 49kg
- Tolerances  
Cast Size  $\pm 1.00\text{mm}$   
Angle profile  $\pm 0.25^\circ$   
Machined Size  $\pm 0.125\text{mm}$   
Overall diameter of cover  $+0\text{mm}-0.25\text{mm}$   
DFT of coating  $50\ \mu\text{m}$
- Machine surface symbol:  $3.2/\sqrt{\text{ }}$
- All machine surfaces shall have a coating approved as fit for purpose of providing a rust proof, non-stick and gas/water proof joint.
- Lids to be bolted down if directed by Designer. min two extra length bolts must be used to secure Cover and Riser to frame. Refer to D-018 for Riser detail and Bolt lengths.
- Refer Std Dwg DS-015 for manhole frame details.
- Refer Std Dwg DS-018 for manhole riser details.
- Refer Std Dwg DS-020 and DS-021 for alternate cover details.
- All dimensions are in millimetres unless shown otherwise.

These drawings have been developed in consultation between the participating Councils. BEFORE USE, the user shall confirm that the drawing has been adopted by the appropriate Council.

Rv.	DATE	REVISIONS
C	06/14	Review
B	03/14	Amended Drawing Number
A	10/12	ORIGINAL ISSUE



INSTITUTE OF PUBLIC WORKS ENGINEERING AUSTRALASIA  
STANDARD DRAWINGS

MANHOLE COVER  
(ROADWAY)  
1050 TO 2100 DIAMETER

DS-019

C  
B  
A  
Rv.