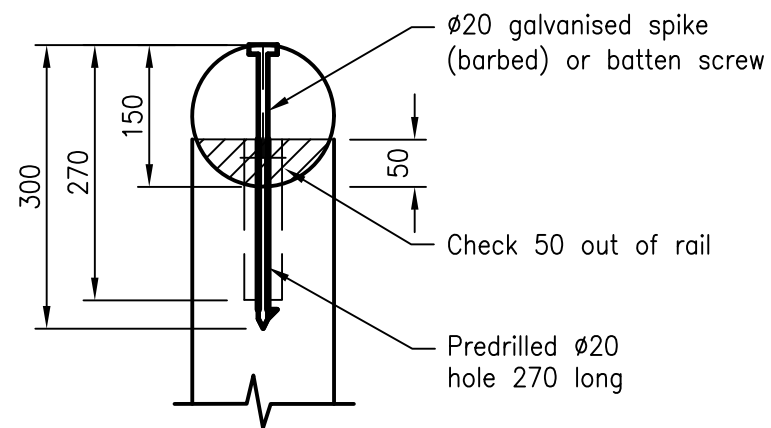
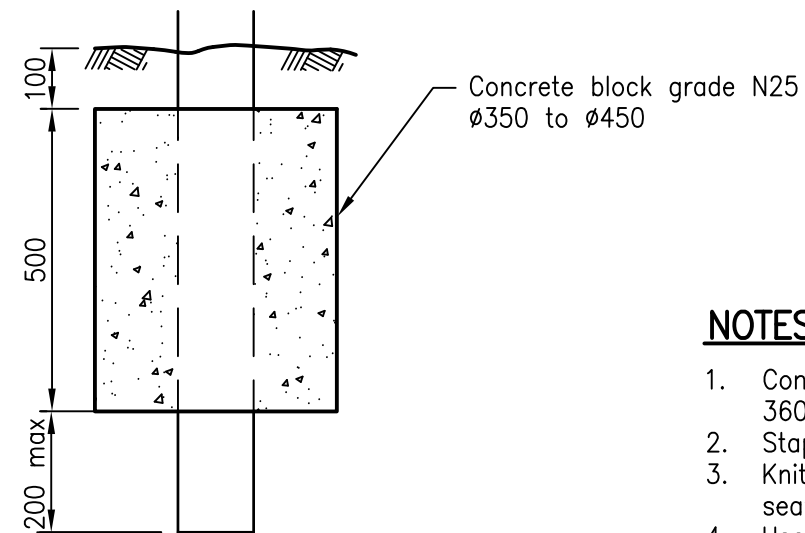


DUNE PROTECTION FENCE



DETAIL 1



DETAIL 2

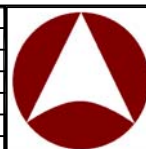
Alternative post setting in shallow sand 600 min

NOTES:

1. Concrete to be grade N25 in accordance with AS 1379 and AS 3600.
2. Staples shall be located at 90° to the timber grain.
3. Knitted green shade fabric shall be located and stapled on the seaward side of the fence.
4. Use of CCA treated timber to be approved by relevant council prior to installation.
5. Paint all cut surfaces with industrial clear water repellant to lock in chemicals used on CCA in accordance with AS 1607.
6. All dimensions are in millimetres unless shown otherwise.

These drawings have been developed in consultation between the participating Councils.
BEFORE USE, the user shall confirm that the drawing has been adopted by the appropriate Council.

C	06/14	Review
B	03/14	Amended Drawing Number
A	10/12	ORIGINAL ISSUE
Rv.	DATE	REVISIONS



**INSTITUTE OF PUBLIC WORKS ENGINEERING AUSTRALASIA
STANDARD DRAWINGS**

**FENCING
DUNE PROTECTION**

GS-046

C
B
A
Rv.