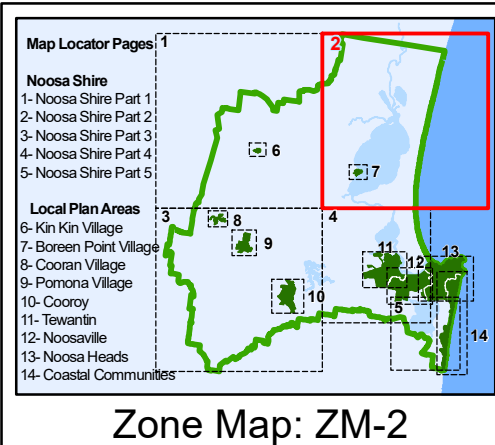
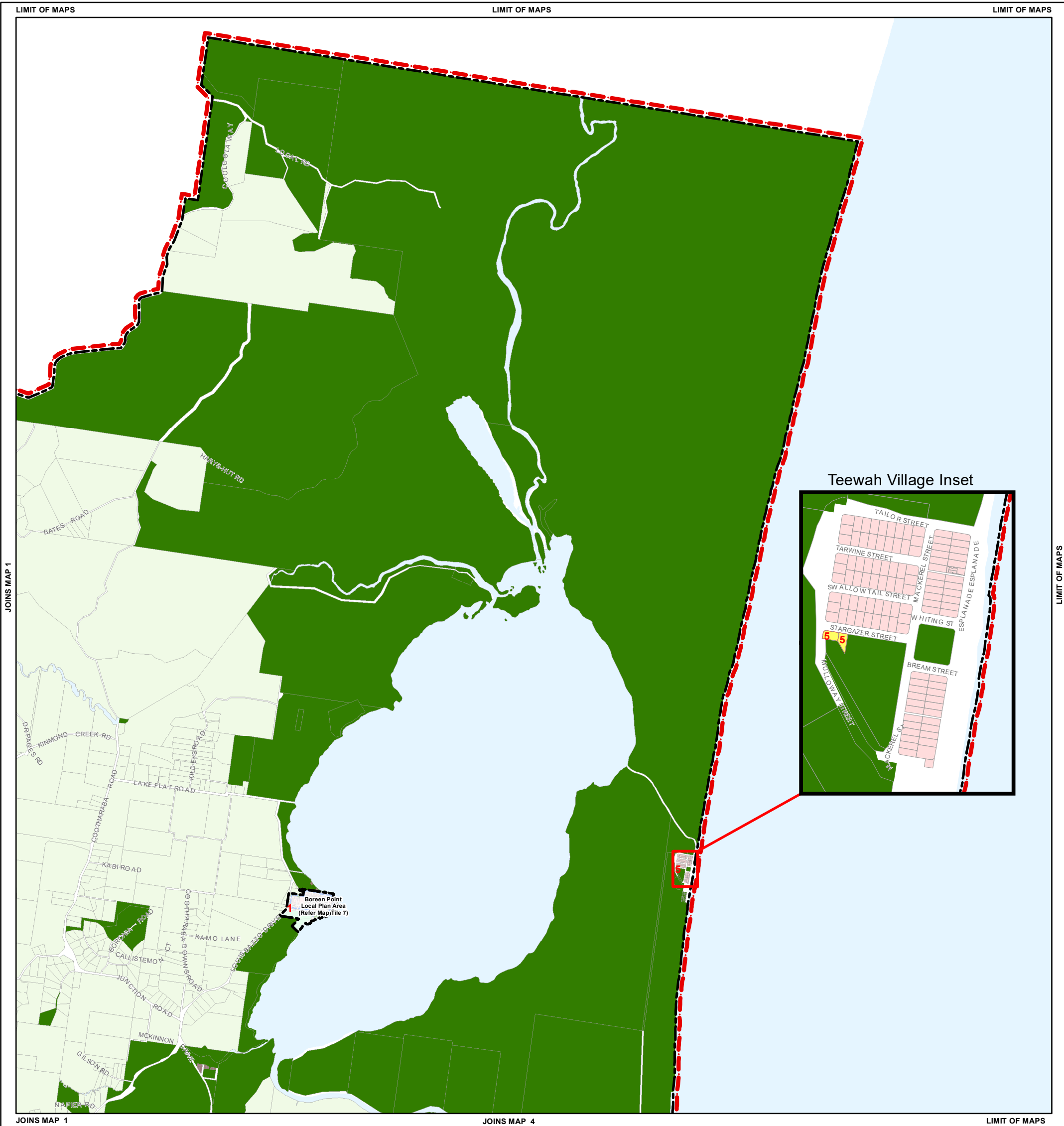


Zone Map: ZM-1



- Zone Map**
Noosa Plan Zones
- Low Density Residential
 - Medium Density Residential
 - High Density Residential
 - Tourist Accommodation
 - Major Centre
 - District Centre
 - Local Centre
 - Neighbourhood Centre
 - Innovation
 - Recreation and Open Space
 - Environmental Management and Conservation
 - Low Impact Industry
 - Medium Impact Industry
 - Community Facilities
 - Rural
 - Rural Residential
- Other Layers**
- Precincts
 - Cadastre
 - Water Body
 - Local Plan Area Boundary
 - Urban Boundary
 - Shire Boundary

Community Facilities Zone Annotations

5 Emergency Services

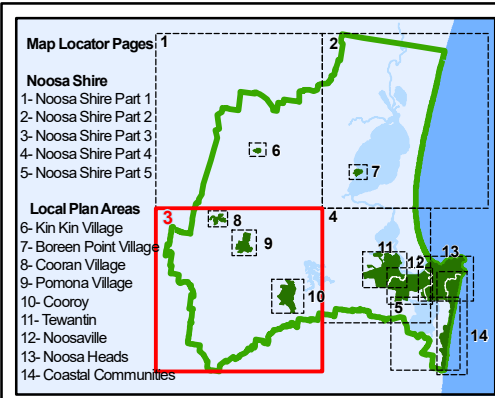
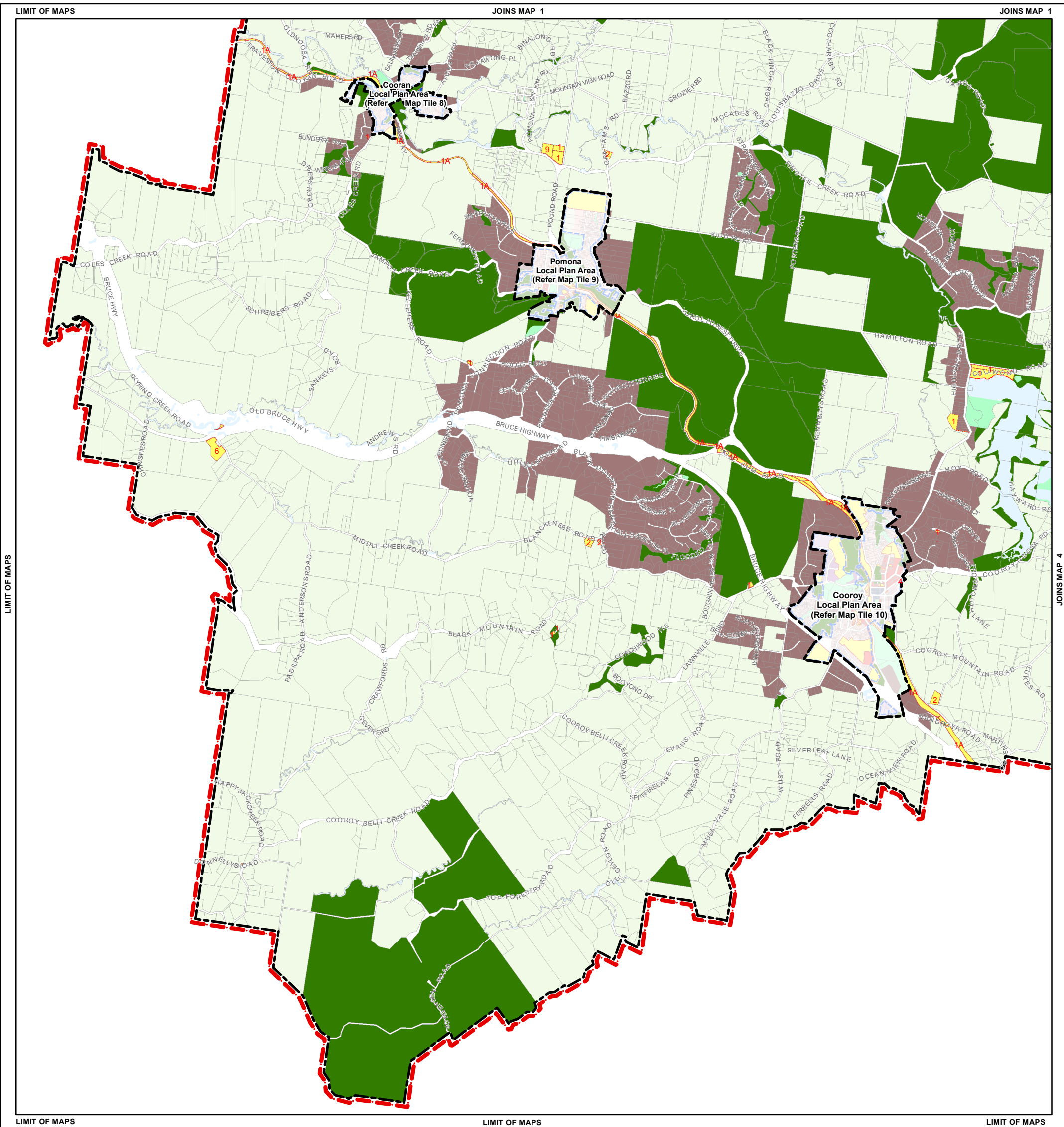
Disclaimer

The information contained in this map has been provided in good faith. Whilst all effort has been made to ensure its accuracy and completeness, Noosa Shire Council takes no responsibility for errors or omissions nor any loss or damage that may result from the use of this

Approx Scale @ A3 = 1: 71,000

Metres

Geocentric Datum of Australia 1994 (GDA94) - MGA Zone 56 (GDA_1994_MGA_Zone_56)



Zone Map
Noosa Plan Zones

Low Density Residential	Innovation
Medium Density Residential	Recreation and Open Space
High Density Residential	Environmental Management and Conservation
Tourist Accommodation	Low Impact Industry
Major Centre	Medium Impact Industry
District Centre	Community Facilities
Local Centre	Rural
Neighbourhood Centre	Rural Residential

Other Layers

Local Plan Area Boundary	Precincts
Urban Boundary	Cadastre
Shire Boundary	Water Body

Community Facilities Zone Annotations

1 Utility Installation
1A Utility Installation (Railway)
2 Substation
6 Educational Establishment
9 Cemetery

Disclaimer

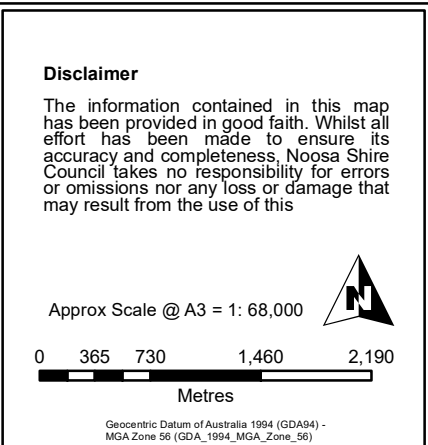
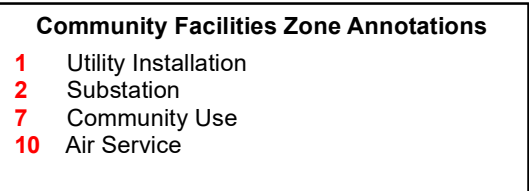
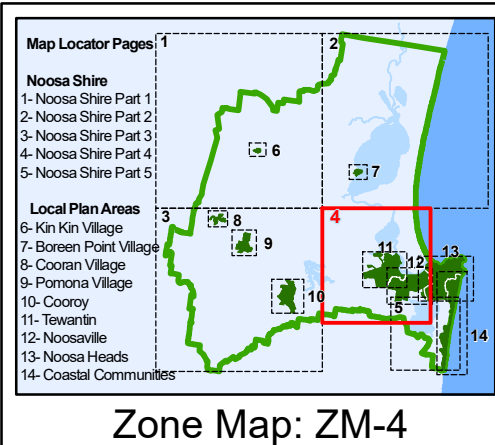
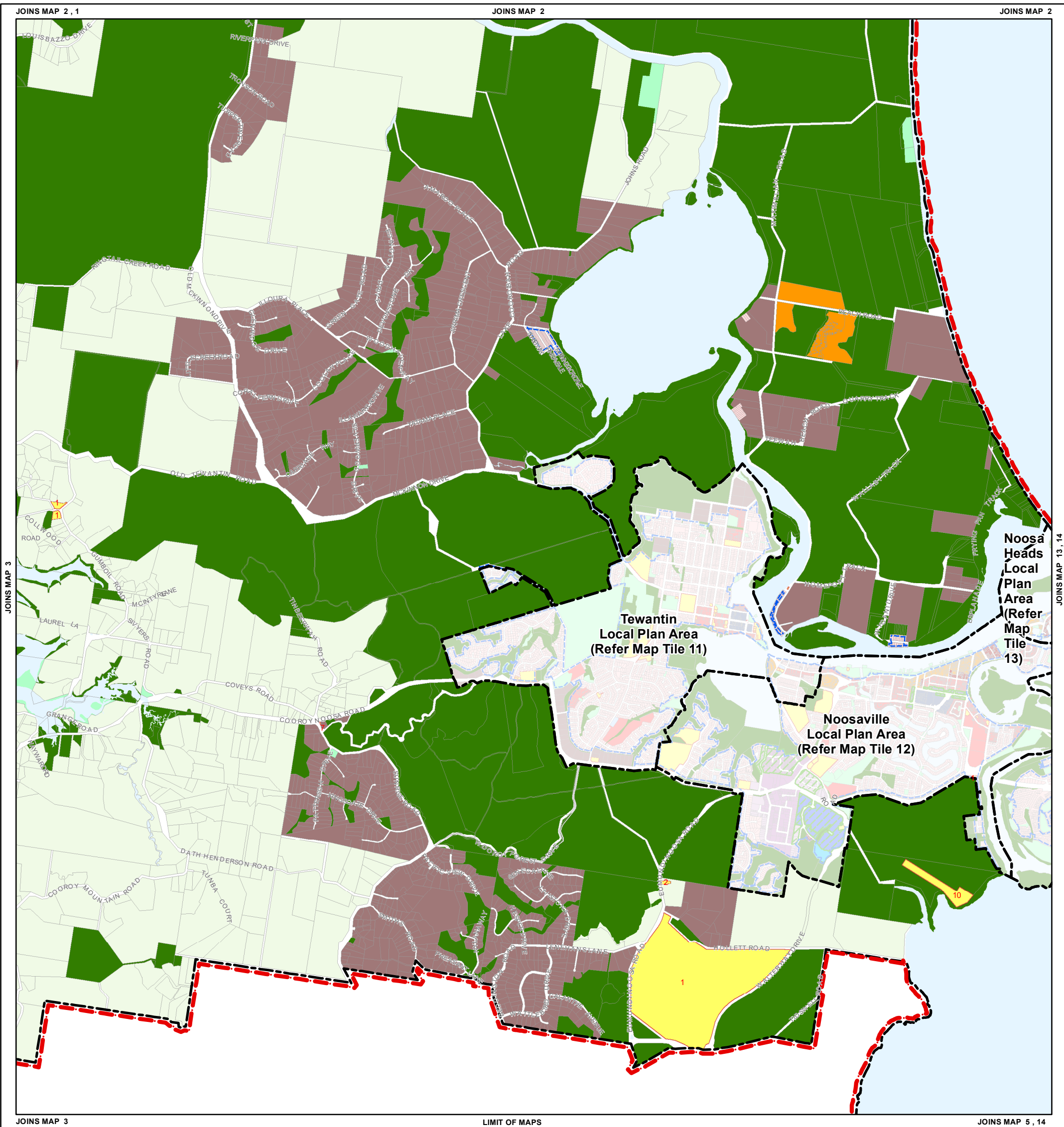
The information contained in this map has been provided in good faith. Whilst all effort has been made to ensure its accuracy and completeness, Noosa Shire Council takes no responsibility for errors or omissions nor any loss or damage that may result from the use of this

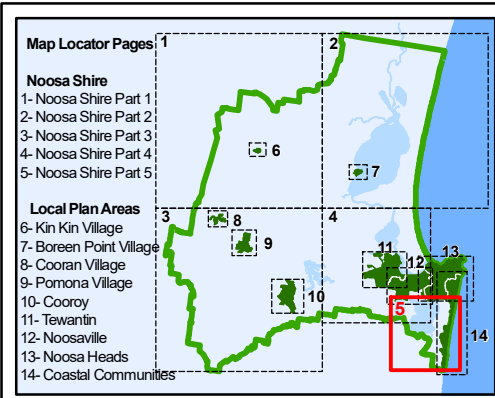
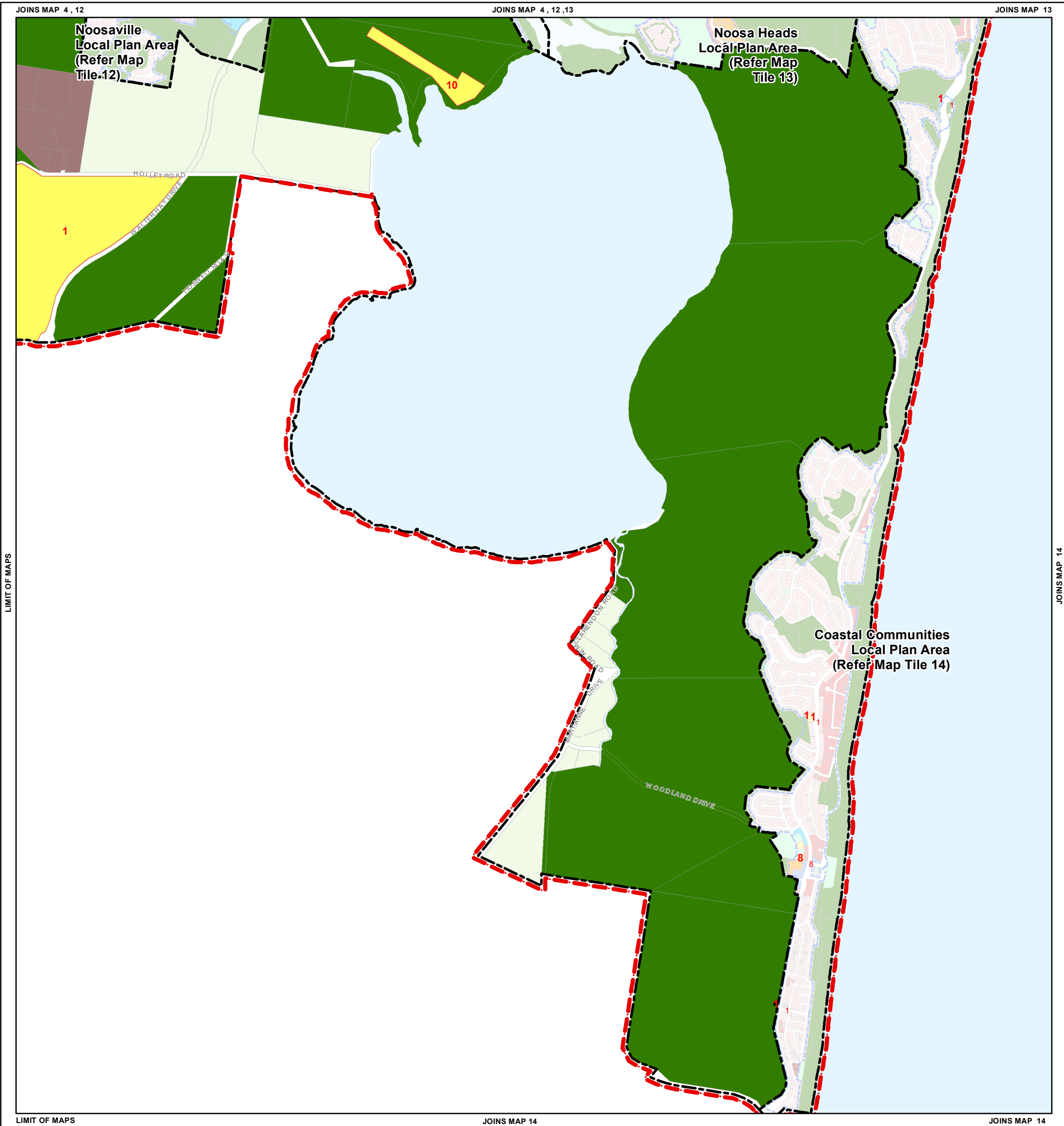
Approx Scale @ A3 = 1: 50,000

Metres

Geocentric Datum of Australia 1994 (GDA94) - MGA Zone 56 (GDA_1994_MGA_Zone_56)

Zone Map: ZM-3





- Zone Map**
Noosa Plan Zones
- Low Density Residential
 - Medium Density Residential
 - High Density Residential
 - Tourist Accommodation
 - Major Centre
 - District Centre
 - Local Centre
 - Neighbourhood Centre
 - Innovation
 - Recreation and Open Space
 - Environmental Management and Conservation
 - Low Impact Industry
 - Medium Impact Industry
 - Community Facilities
 - Rural
 - Rural Residential
- Other Layers**
- Precincts
 - Cadastre
 - Water Body
 - Local Plan Area Boundary
 - Urban Boundary
 - Shire Boundary

- Community Facilities Zone Annotations**
- 1 Utility Installation
 - 10 Air Service

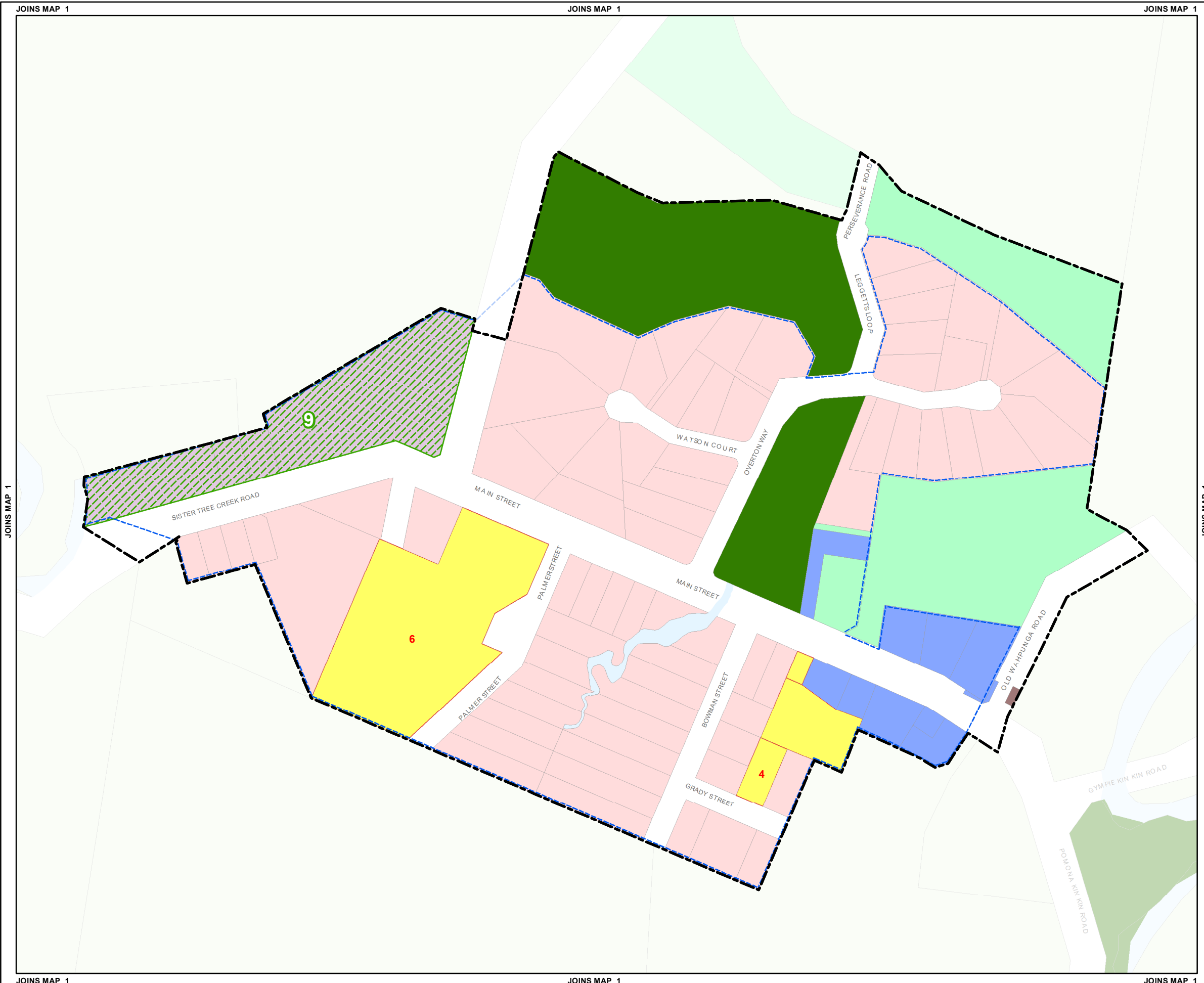
Disclaimer

The information contained in this map has been provided in good faith. Whilst all effort has been made to ensure its accuracy and completeness, Noosa Shire Council takes no responsibility for errors or omissions nor any loss or damage that may result from the use of this

Approx Scale @ A3 = 1: 30,000

Metres

Geocentric Datum of Australia 1994 (GDA94) - MGA Zone 56 (GDA_1994_MGA_Zone_56)



Zone Map

Noosa Plan Zones

- Low Density Residential
- Medium Density Residential
- High Density Residential
- Tourist Accommodation
- Major Centre
- District Centre
- Local Centre
- Neighbourhood Centre
- Innovation
- Recreation and Open Space
- Environmental Management and Conservation
- Low Impact Industry
- Medium Impact Industry
- Community Facilities
- Rural
- Rural Residential

Other Layers

- Local Plan Area Boundary
- Urban Boundary
- Shire Boundary
- Precincts (9 - Kin Kin Business & Industry Precinct)
- Cadastre
- Water Body

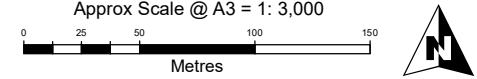
Community Facilities Zone Annotations

- 4 Place of Worship
- 6 Educational Establishment

Disclaimer

The information contained in this map has been provided in good faith. Whilst all effort has been made to ensure its accuracy and completeness, Noosa Shire Council takes no responsibility for errors or omissions nor any loss or damage that may result from the use of this information.

Approx Scale @ A3 = 1: 3,000



Geocentric Datum of Australia 1994 (GDA94) - MGA Zone 56 (GDA_1994_MGA_Zone_56)

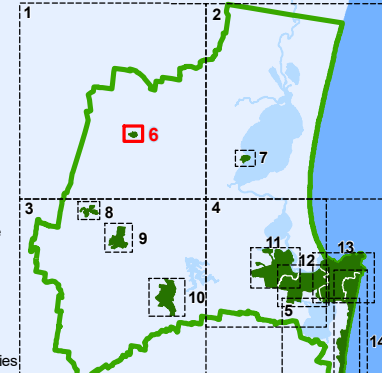
Map Locator Pages

Noosa Shire

- 1- Noosa Shire Part 1
- 2- Noosa Shire Part 2
- 3- Noosa Shire Part 3
- 4- Noosa Shire Part 4
- 5- Noosa Shire Part 5

Local Plan Areas

- 6- Kin Kin Village
- 7- Boreen Point Village
- 8- Cooran Village
- 9- Pomona Village
- 10- Cooroy
- 11- Tewantin
- 12- Noosaville
- 13- Noosa Heads
- 14- Coastal Communities

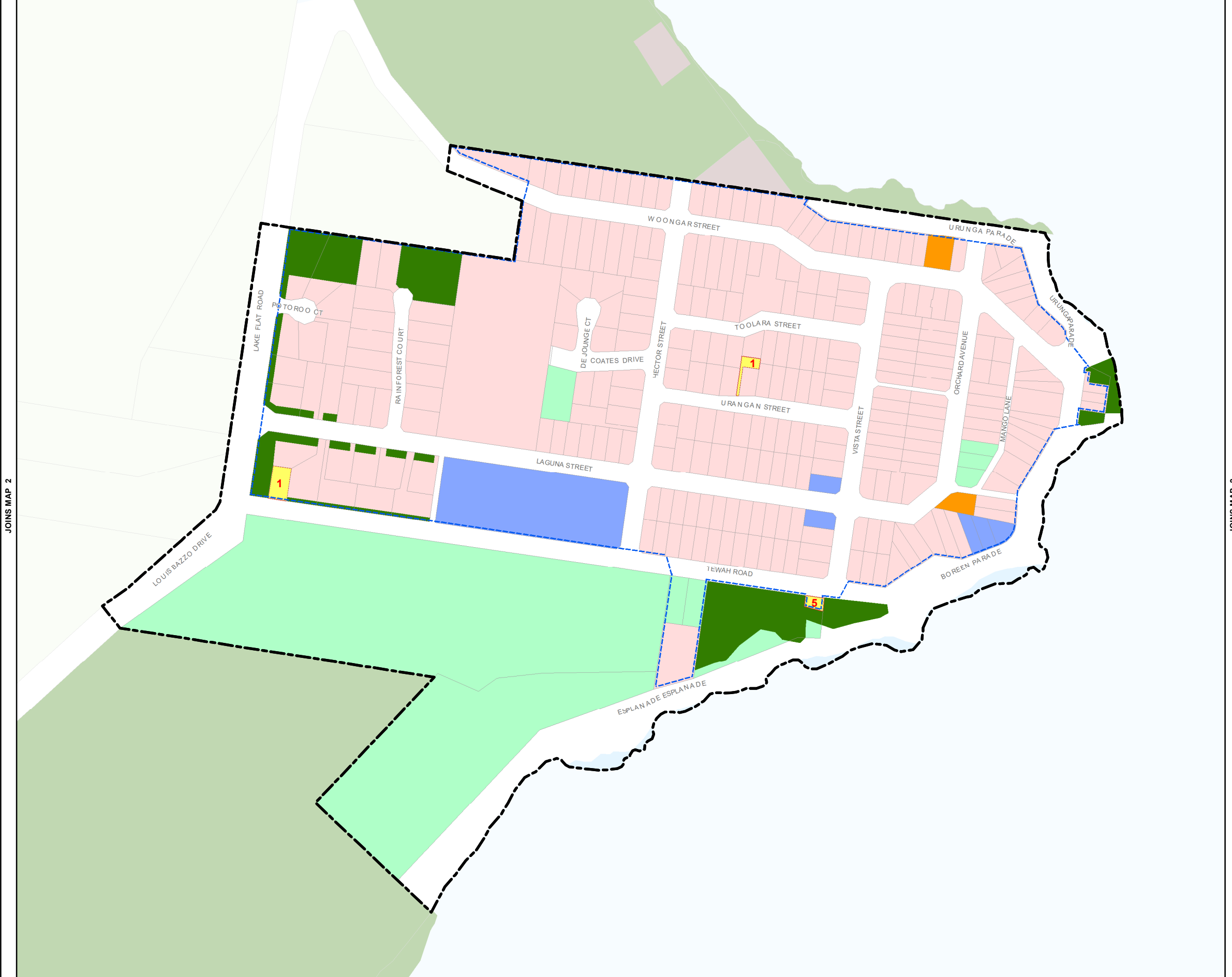


Zone Map: ZM-6

JOINS MAP 2

JOINS MAP 2

JOINS MAP 2



JOINS MAP 2

JOINS MAP 2



JOINS MAP 2

JOINS MAP 2

JOINS MAP 2

Zone Map

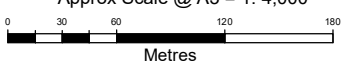
- Noosa Plan Zones**
-  Low Density Residential
 -  Medium Density Residential
 -  High Density Residential
 -  Tourist Accommodation
 -  Major Centre
 -  District Centre
 -  Local Centre
 -  Neighbourhood Centre
 -  Innovation
 -  Recreation and Open Space
 -  Environmental Management and Conservation
 -  Low Impact Industry
 -  Medium Impact Industry
 -  Community Facilities
 -  Rural
 -  Rural Residential
- Other Layers**
-  Local Plan Area Boundary
 -  Urban Boundary
 -  Shire Boundary
 -  Precincts
 -  Cadastre
 -  Water Body

- Community Facilities Zone Annotations**
-  Utility Installation
 -  Emergency Services

Disclaimer

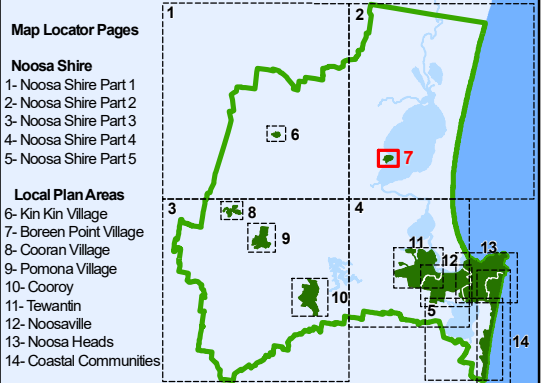
The information contained in this map has been provided in good faith. Whilst all effort has been made to ensure its accuracy and completeness, Noosa Shire Council takes no responsibility for errors or omissions nor any loss or damage that may result from the use of this information.

Approx Scale @ A3 = 1: 4,000



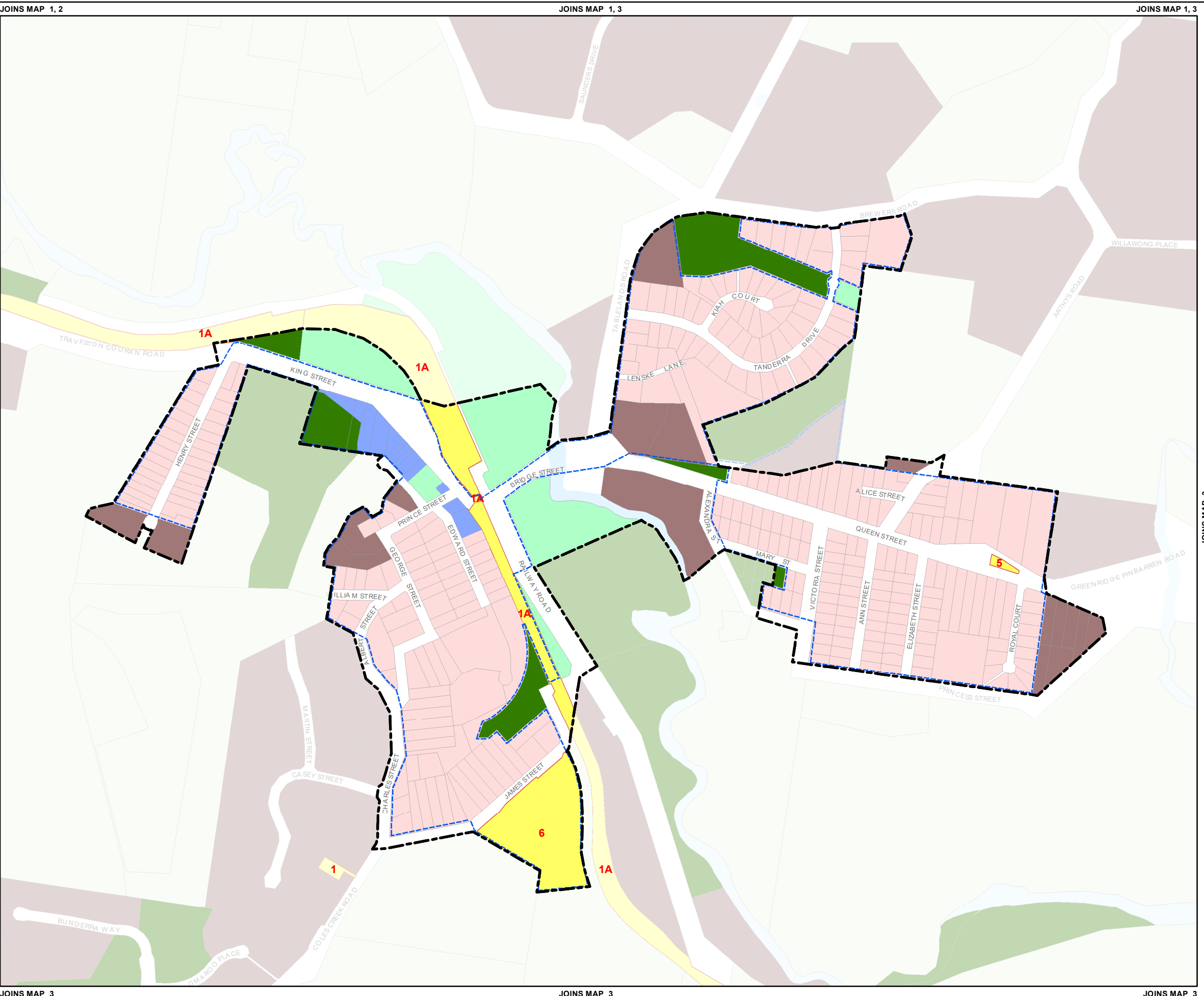
Metres

Geocentric Datum of Australia 1994 (GDA94) - MGA Zone 56 (GDA_1994_MGA_Zone_56)



Zone Map: ZM-7

JOINS MAP 1, 2
JOINS MAP 1, 3
JOINS MAP 3
JOINS MAP 3
JOINS MAP 3



Zone Map

Noosa Plan Zones

- Low Density Residential
- Medium Density Residential
- High Density Residential
- Tourist Accommodation
- Major Centre
- District Centre
- Local Centre
- Neighbourhood Centre
- Innovation
- Recreation and Open Space
- Environmental Management and Conservation
- Low Impact Industry
- Medium Impact Industry
- Community Facilities
- Rural
- Rural Residential

Other Layers

- Local Plan Area Boundary
- Urban Boundary
- Shire Boundary
- Precincts
- Cadastre
- Water Body

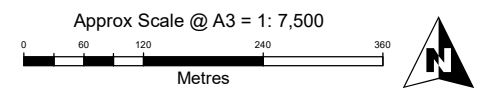
Community Facilities Zone Annotations

- 1 Utility Installation
- 1A Utility Installation (Railway)
- 5 Emergency Services
- 6 Educational Establishment

Disclaimer

The information contained in this map has been provided in good faith. Whilst all effort has been made to ensure its accuracy and completeness, Noosa Shire Council takes no responsibility for errors or omissions nor any loss or damage that may result from the use of this information.

Approx Scale @ A3 = 1: 7,500



Geocentric Datum of Australia 1994 (GDA94) - MGA Zone 56 (GDA_1994_MGA_Zone_56)

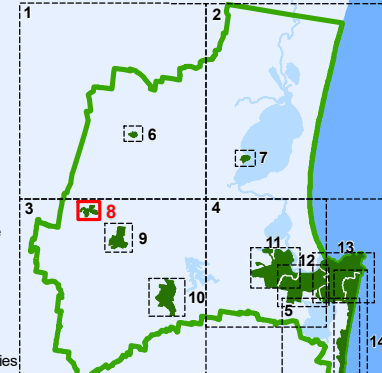
Map Locator Pages

Noosa Shire

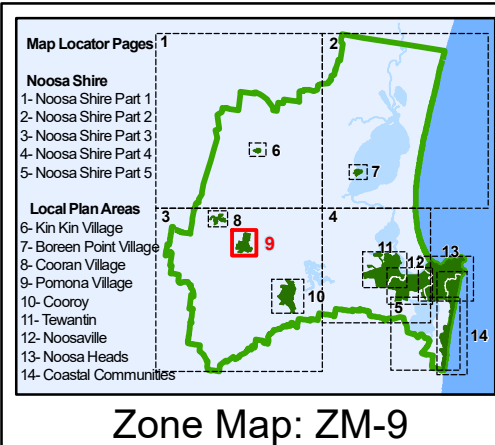
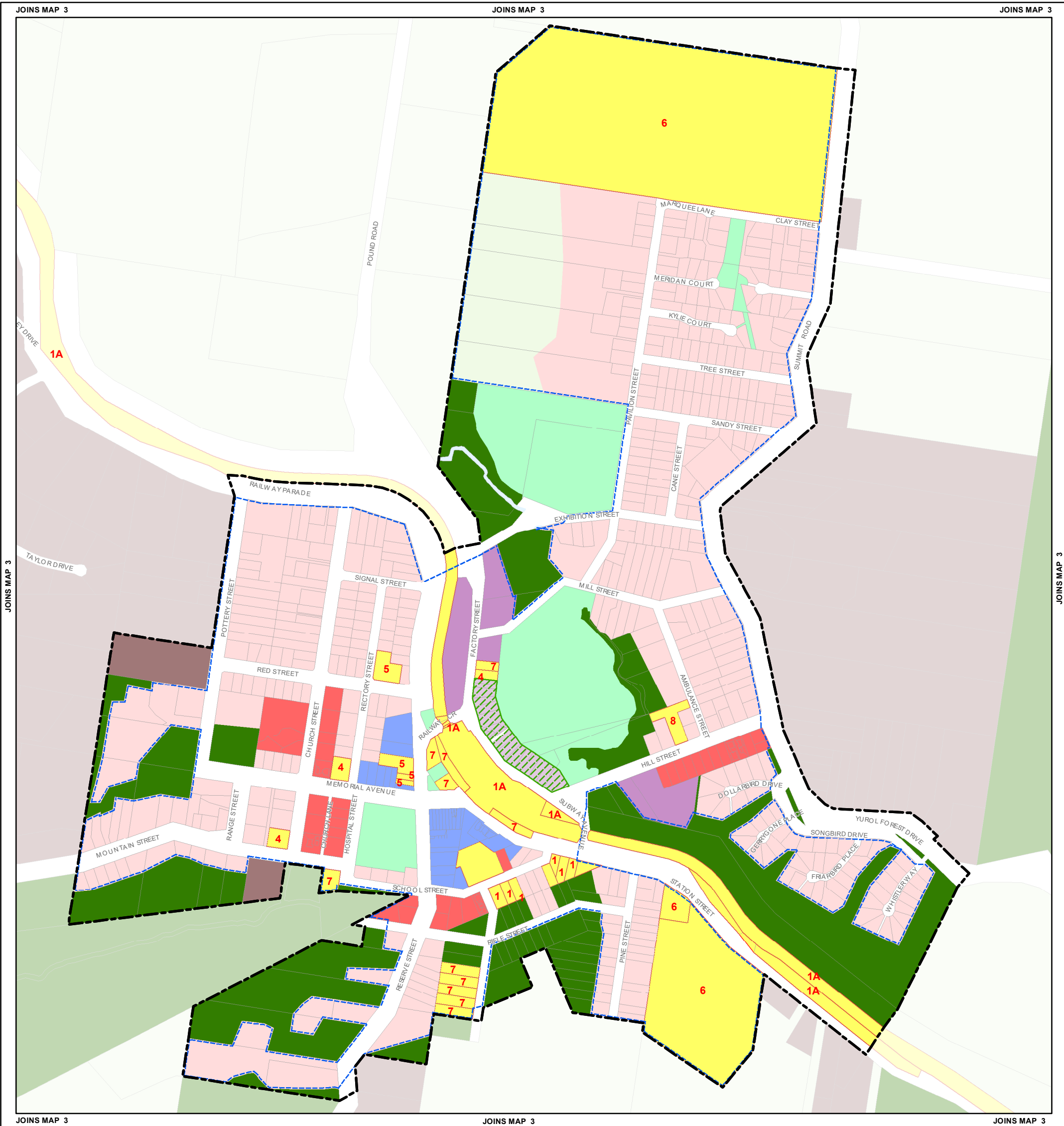
- 1- Noosa Shire Part 1
- 2- Noosa Shire Part 2
- 3- Noosa Shire Part 3
- 4- Noosa Shire Part 4
- 5- Noosa Shire Part 5

Local Plan Areas

- 6- Kin Kin Village
- 7- Boreen Point Village
- 8- Cooran Village
- 9- Pomona Village
- 10- Cooroy
- 11- Tewantin
- 12- Noosaville
- 13- Noosa Heads
- 14- Coastal Communities



Zone Map: ZM-8



Zone Map
Noosa Plan Zones

Low Density Residential	Recreation and Open Space
Medium Density Residential	Environmental Management and Conservation
High Density Residential	Low Impact Industry
Tourist Accommodation	Medium Impact Industry
Major Centre	Community Facilities
District Centre	Rural
Local Centre	Rural Residential
Neighbourhood Centre	

Other Layers

Local Plan Area Boundary	Cadastre
Urban Boundary	Water Body
Precincts (4 - Factory Street Business & Industry Precinct)	Shire Boundary

Community Facilities Zone Annotations

1	Utility Installation
1A	Utility Installation (Railway)
4	Place of Worship
5	Emergency Services
6	Educational Establishment
7	Community Use
8	Childcare Centre

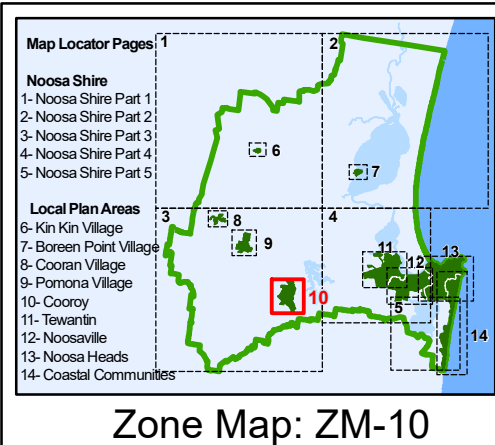
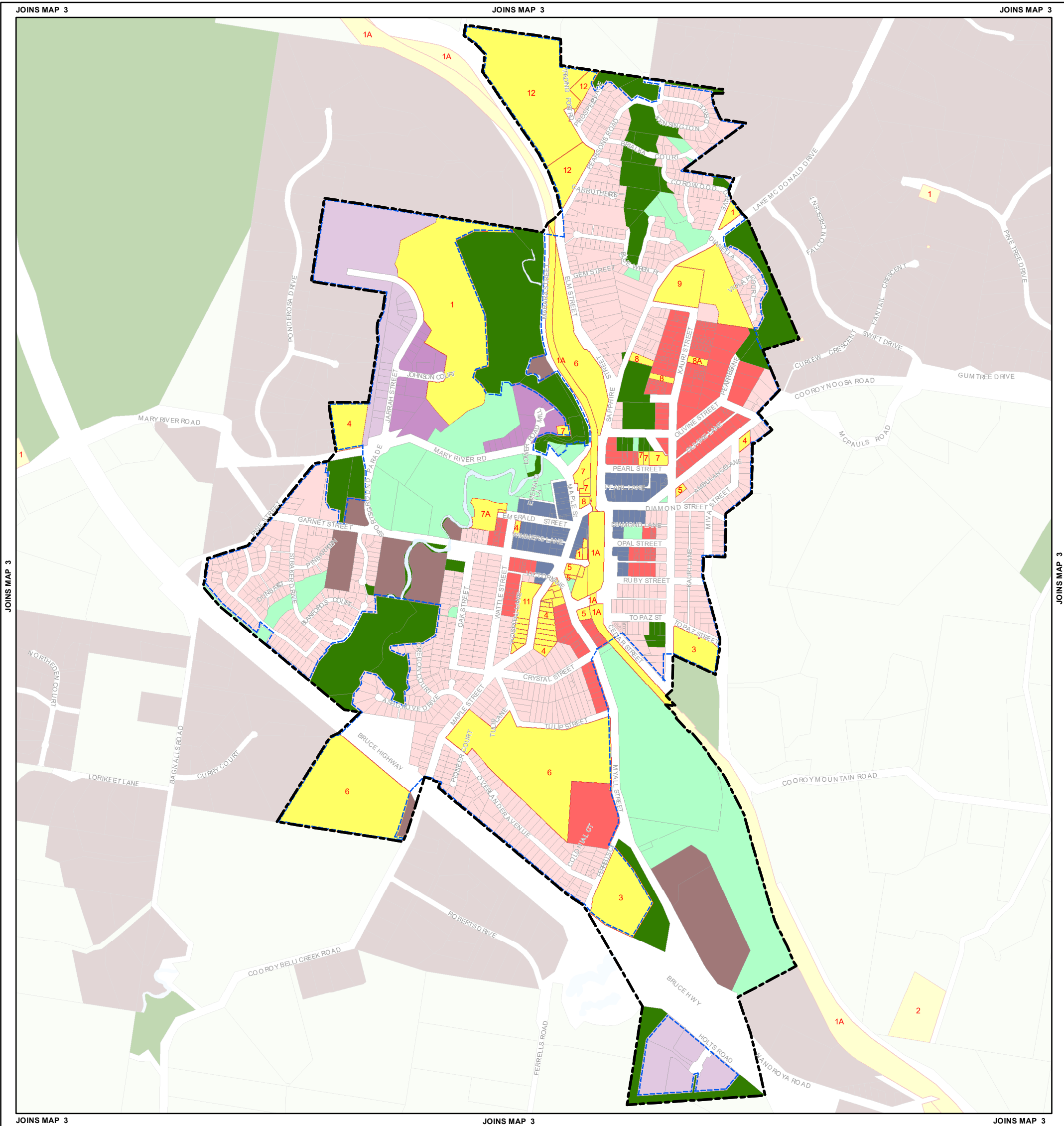
Disclaimer

The information contained in this map has been provided in good faith. Whilst all effort has been made to ensure its accuracy and completeness, Noosa Shire Council takes no responsibility for errors or omissions nor any loss or damage that may result from the use of this

Approx Scale @ A3 = 1: 8,500

0 62.5 125 250 375
Metres

Geocentric Datum of Australia 1994 (GDA94) - MGA Zone 56 (GDA_1994_MGA_Zone_56)



Zone Map
Noosa Plan Zones

Low Density Residential	Innovation
Medium Density Residential	Recreation and Open Space
High Density Residential	Environmental Management and Conservation
Tourist Accommodation	Low Impact Industry
Major Centre	Medium Impact Industry
District Centre	Community Facilities
Local Centre	Rural
Neighbourhood Centre	Rural Residential
Urban Boundary	Precincts
Other Layers	Cadastre
Local Plan Area Boundary	Water Body
Shire Boundary	

Community Facilities Zone Annotations

1	Utility Installation
1A	Utility Installation (Railway)
3	Residential Care Facility
4	Place of Worship
5	Emergency Services
6	Educational Establishment
7	Community Use
7A	Community Use and Indoor Sport and Recreation
8	Childcare Centre
8A	Childcare Centre and Educational Establishment
9	Cemetery
11	Health Services
12	Retirement Facility and Residential Care Facility

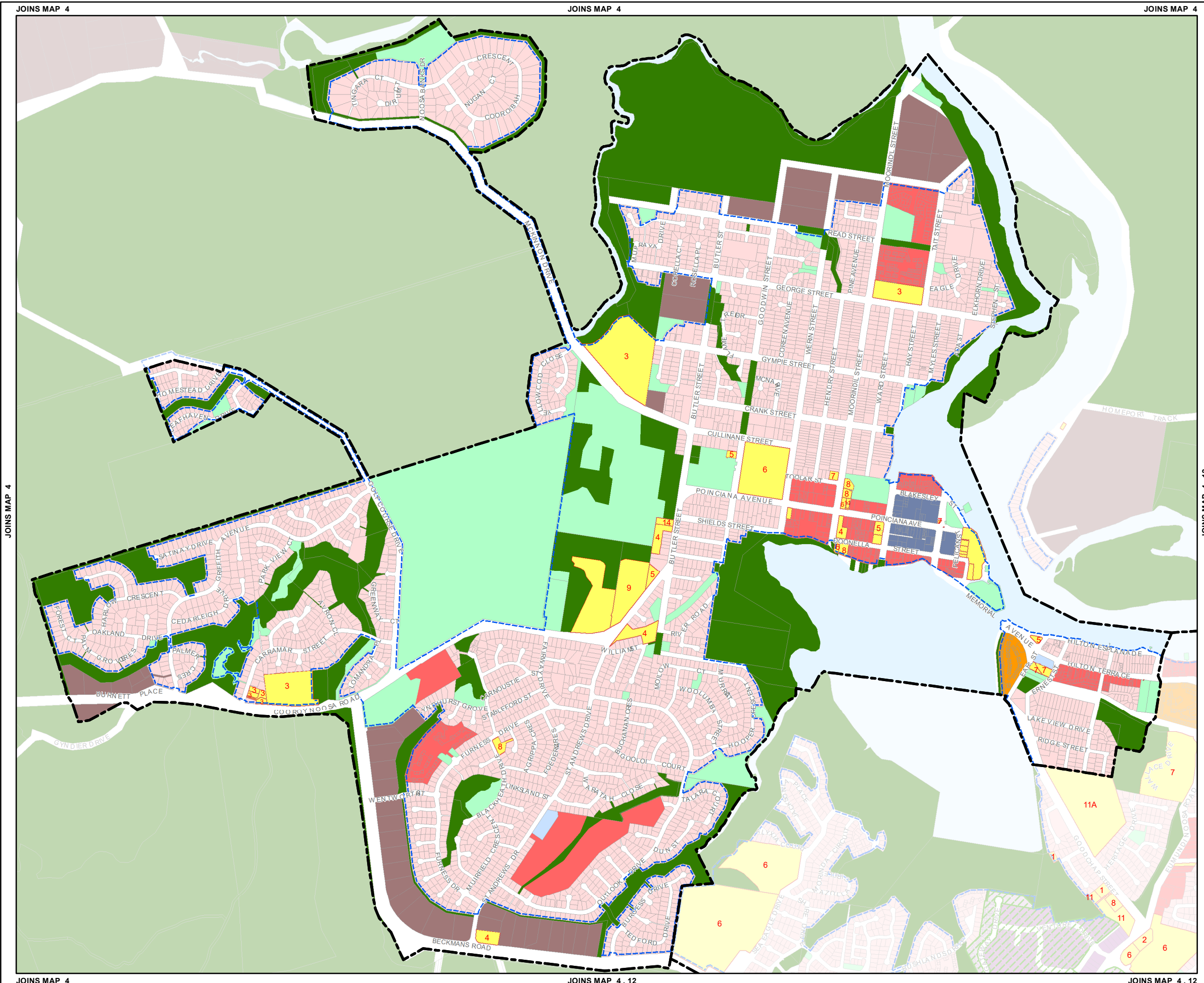
Disclaimer

The information contained in this map has been provided in good faith. Whilst all effort has been made to ensure its accuracy and completeness, Noosa Shire Council takes no responsibility for errors or omissions nor any loss or damage that may result from the use of this

Approx Scale @ A3 = 1: 14,000

Metres

Geocentric Datum of Australia 1994 (GDA94) - MGA Zone 56 (GDA_1994_MGA_Zone_56)



Zone Map

Noosa Plan Zones

- Low Density Residential
- Medium Density Residential
- High Density Residential
- Tourist Accommodation
- Major Centre
- District Centre
- Local Centre
- Neighbourhood Centre
- Innovation
- Recreation and Open Space
- Environmental Management and Conservation
- Low Impact Industry
- Medium Impact Industry
- Community Facilities
- Rural
- Rural Residential

Other Layers

- Local Plan Area Boundary
- Urban Boundary
- Shire Boundary
- Precincts
- Cadastre
- Water Body

Community Facilities Zone Annotations

- 3 Residential Care Facility
- 4 Place of Worship
- 5 Emergency Services
- 6 Educational Establishment
- 7 Community Use
- 8 Childcare Centre
- 9 Cemetery
- 11 Healthcare Services
- 14 Funeral Parlour and Crematorium

Disclaimer

The information contained in this map has been provided in good faith. Whilst all effort has been made to ensure its accuracy and completeness, Noosa Shire Council takes no responsibility for errors or omissions nor any loss or damage that may result from the use of this information.

Approx Scale @ A3 = 1: 17,000

Metres

Geocentric Datum of Australia 1994 (GDA94) - MGA Zone 56 (GDA_1994_MGA_Zone_56)

Map Locator Pages

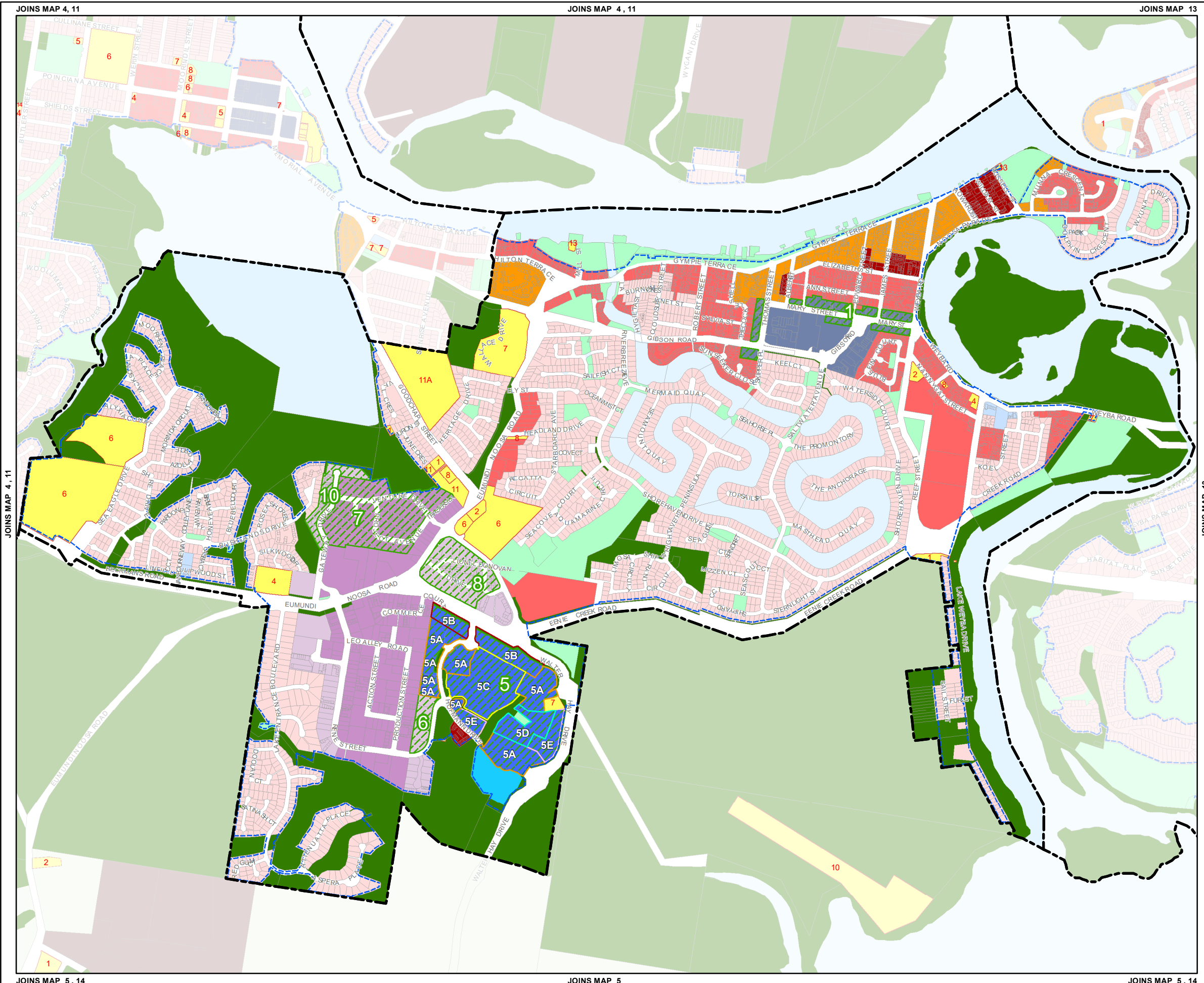
Noosa Shire

- 1- Noosa Shire Part 1
- 2- Noosa Shire Part 2
- 3- Noosa Shire Part 3
- 4- Noosa Shire Part 4
- 5- Noosa Shire Part 5

Local Plan Areas

- 6- Kin Kin Village
- 7- Boreen Point Village
- 8- Cooran Village
- 9- Pomona Village
- 10- Cooroy
- 11- Tewantin
- 12- Noosaville
- 13- Noosa Heads
- 14- Coastal Communities

Zone Map: ZM-11



Zone Map

Noosa Plan Zones

- Low Density Residential
- Medium Density Residential
- High Density Residential
- Tourist Accommodation
- Major Centre
- District Centre
- Local Centre
- Neighbourhood Centre
- Innovation
- Recreation and Open Space
- Environmental Management and Conservation
- Low Impact Industry
- Medium Impact Industry
- Community Facilities
- Rural
- Rural Residential

Precincts

- 1 - Mary Street Health and Wellbeing Precinct
- 5 - Noosa Business Centre Precincts* (*See below)
- 6 - Hofmann Drive Business & Industry Precinct
- 7 - Venture Drive Enterprise Precinct
- 8 - Lionel Donovan Drive Auto Precinct
- 10 - Gateway Drive West Makers Precinct

Noosa Business Centre Precincts

- 5A - Business Park Precinct
- 5B - Showroom Precinct
- 5C - Retail Precinct
- 5D - Village Mixed Use Precinct
- 5E - High Density Residential Precinct

Other Layers

- Local Plan Area Boundary
- Urban Boundary
- Shire Boundary
- Cadastre
- Water Body

Community Facilities Zone Annotations

1	Utility Installation
2	Substation
4	Place of Worship
6	Educational Establishment
7	Community Use
8	Childcare Centre
11	Healthcare Services
11A	Hospital
13	Marine Industry (Slipway)

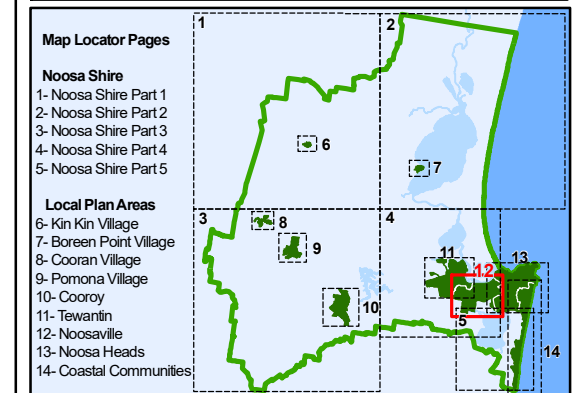
Disclaimer

The information contained in this map has been provided in good faith. Whilst all effort has been made to ensure its accuracy and completeness, Noosa Shire Council takes no responsibility for errors or omissions nor any loss or damage that may result from the use of this information.

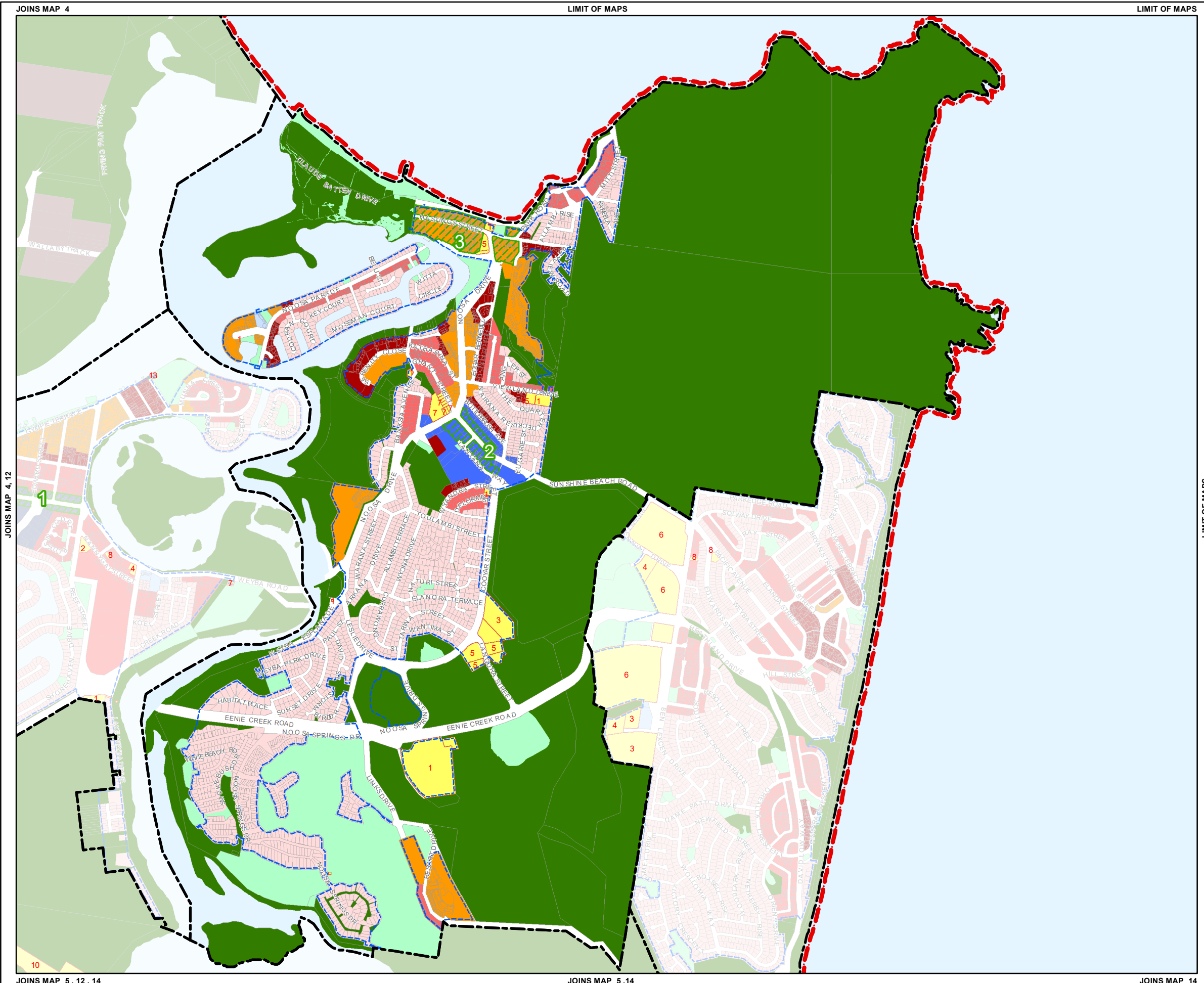
Approx Scale @ A3 = 1: 17,500

Metres

Geocentric Datum of Australia 1994 (GDA94) - MGA Zone 56 (GDA_1994_MGA_Zone_56)



Zone Map: ZM-12



Zone Map

Noosa Plan Zones

- Low Density Residential
- Medium Density Residential
- High Density Residential
- Tourist Accommodation
- Major Centre
- District Centre
- Local Centre
- Neighbourhood Centre
- Innovation
- Recreation and Open Space
- Environmental Management and Conservation
- Low Impact Industry
- Medium Impact Industry
- Community Facilities
- Rural
- Rural Residential

Precincts

- 1 - Mary Street Health and Wellbeing Precinct
- 2 - Noosa Junction Hospitality Precinct
- 3 - Hastings Street Mixed Use Precinct

Other Layers

- Local Plan Area Boundary
- Urban Boundary
- Shire Boundary
- Cadastre
- Water Body

Community Facilities Zone Annotations

- 1 Utility Installation
- 2 Substation
- 3 Residential Care Facility
- 4 Place of Worship
- 5 Emergency Services
- 6 Educational Establishment
- 7 Community Use
- 8 Childcare Centre
- 13 Marine Industry (Slipway)
- 15 Residential Care Facility, Multiple Dwelling, Rooming Accommodation, Community Residence

Disclaimer

The information contained in this map has been provided in good faith. Whilst all effort has been made to ensure its accuracy and completeness, Noosa Shire Council takes no responsibility for errors or omissions nor any loss or damage that may result from the use of this information.

Approx Scale @ A3 = 1: 21,000

Metres

Geocentric Datum of Australia 1994 (GDA94) - MGA Zone 56 (GDA_1994_MGA_Zone_56)

Map Locator Pages

Noosa Shire

- 1- Noosa Shire Part 1
- 2- Noosa Shire Part 2
- 3- Noosa Shire Part 3
- 4- Noosa Shire Part 4
- 5- Noosa Shire Part 5

Local Plan Areas

- 6- Kin Kin Village
- 7- Boreen Point Village
- 8- Cooran Village
- 9- Pomona Village
- 10- Cooroy
- 11- Tewantin
- 12- Noosaville
- 13- Noosa Heads
- 14- Coastal Communities

Zone Map: ZM-13

