

21st February 2024

Noosa Spit Doggy Beach Sand Nourishment Works, Noosa Heads

Project summary

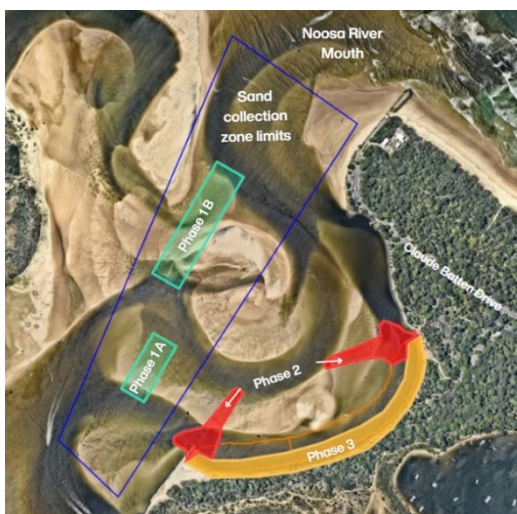
Sand nourishment works to protect Doggy Beach from further erosion is being planned by Council.

The erosion of Doggy Beach is primarily driven by boat wash, wave action and tides, which result in the channel migration process.

Increasing the volume of sand at Doggy Beach will help reduce erosion caused by the current flow and boat wash.

Scope of work

- **Phase 1 (A&B)** – sand dredging to reopen the Noosa River channel.
- **Phase 2** – create sand plugs to redirect river flow from eroded shore.
- **Phase 3** – remove fallen trees and renourish the beach with 160,000 tonnes of sand.



Timing

After extensive assessment, the environmental permit to commence sand nourishment works to protect Doggy Beach from further erosion has been granted.

Work will take place **between April and the end of September 2024**, minimising the impact on the coastal and marine environment, including fish spawning and the flowering, and fruiting of marine plants.

Community impacts

For the safety of the public during works, a part of the car park next to Doggy Beach, Doggy Beach itself, and the body of water beside the beach will be closed to all users, including swimmers and all recreational marine craft (powered and non-powered).

We have collaborated with Maritime Safety Queensland (MSQ) to guarantee the availability of a navigable channel for boat users, with marine vessels being redirected around the work area.

Your patience during this project is appreciated. For further information please refer to the Frequently Asked Questions factsheet on Council's website, via the 'Work in Progress' page.



Stay updated

noosa.qld.gov.au/wip

facebook.com/noosacouncil

Contact Us

07 5329 6500

mail@noosa.qld.gov.au

(Subject line: Noosa Spit Doggy Beach Nourishment)